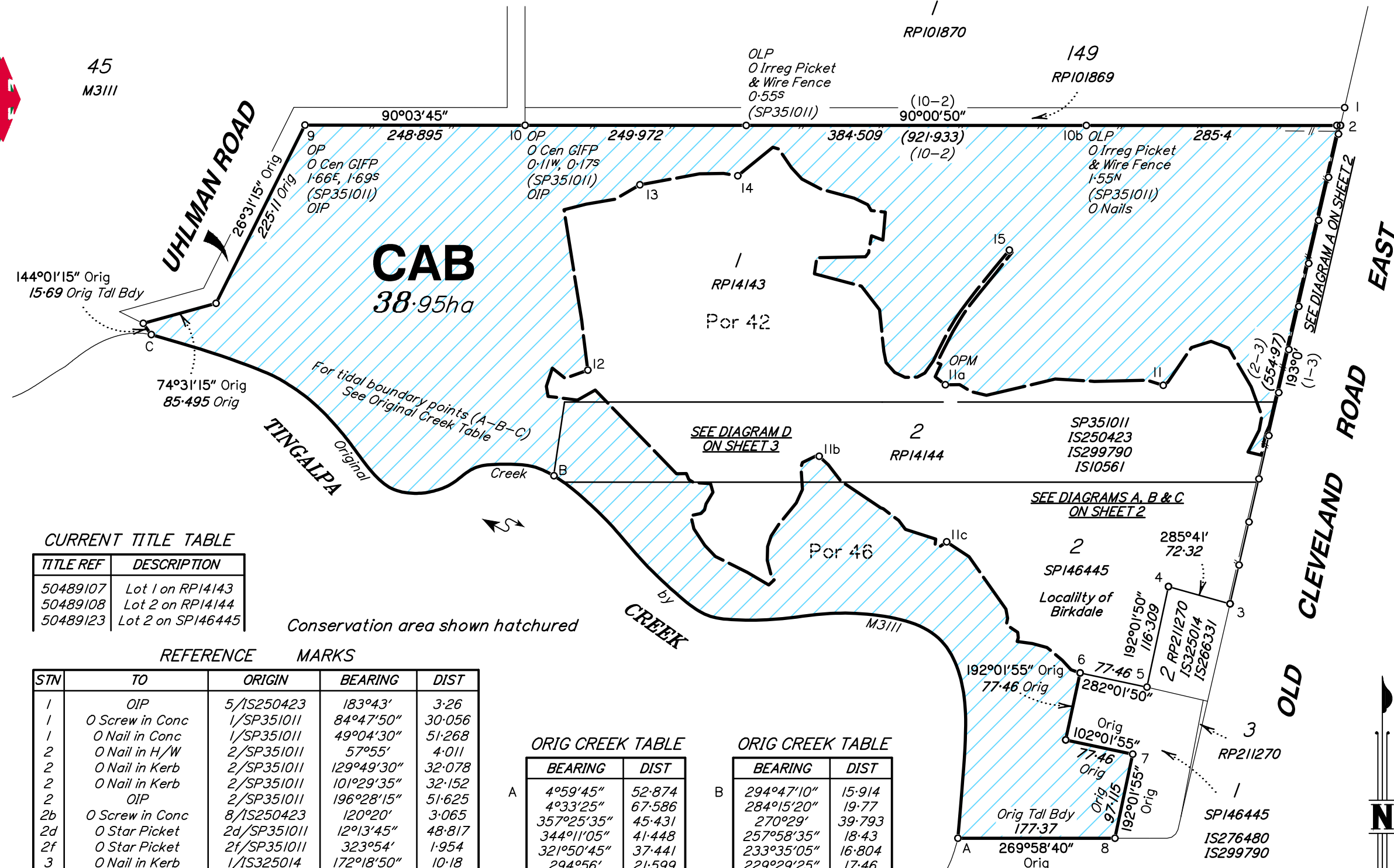


Original information compiled from SP351011 in the Department of Natural Resources and Mines, Manufacturing and Regional and Rural Development

50x50mm original pegs at all subject corners by SP351011 unless otherwise shown



CURRENT TITLE TABLE

TITLE REF	DESCRIPTION
50489107	Lot 1 on RP14143
50489108	Lot 2 on RP14144
50489123	Lot 2 on SP146445

REFERENCE MARKS

STN	TO	ORIGIN	BEARING	DIST
1	OIP	5/IS250423	183°43'	3.26
1	O Screw in Conc	1/SP351011	84°47'50"	30.056
1	O Nail in Conc	1/SP351011	49°04'30"	51.268
2	O Nail in H/W	2/SP351011	57°55'	4.011
2	O Nail in Kerb	2/SP351011	129°49'30"	32.078
2	O Nail in Kerb	2/SP351011	101°29'35"	32.152
2	OIP	2/SP351011	196°28'15"	51.625
2b	O Screw in Conc	8/IS250423	120°20'	3.065
2d	O Star Picket	2d/SP351011	12°13'45"	48.817
2f	O Star Picket	2f/SP351011	323°54'	1.954
3	O Nail in Kerb	1/IS325014	172°18'50"	10.18
3	O Screw in Conc	11/IS250423	118°25'	29.415
4	OIP	8/RP211270	12°49'20"	0.865
5	OIP	5/IS266331	203°25'20"	5.495
5	OIP	5/IS266331	350°15'20"	25.28
9	OIP	5/IS10561	129°59'15"	1.005
9a	OIP (New Ref)	5a/IS10561	256°45'	1.358
10	OIP	4/IS10561	279°20'15"	1.245
10b	O Nail in Bitumen	10b/SP351011	177°07'	4.863
10b	O Nail in H/W	10b/SP351011	211°00'25"	126.909
11	O Nail in Plinth	11/SP351011	195°32'52"	97.637
11a	O Bolt in Conc	11a/SP351011	208°38'40"	28.447
11b	OIP	11b/SP351011	349°36'30"	24.746
11c	OIP	11c/SP351011	8°18'50"	18.019
13	OIP	13/SP351011	213°15'	6.138
14	OIP	14/SP351011	284°55'	6.356
15	O Nail in H/W	15/SP351011	33°49'	20.059

ORIG CREEK TABLE

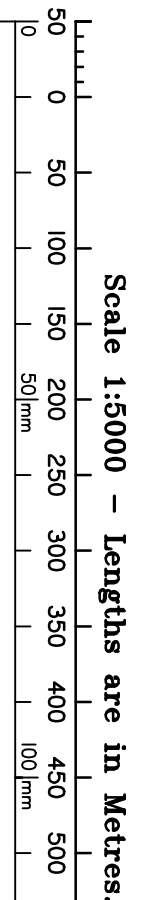
BEARING	DIST
4°59'45"	52.874
4°33'25"	67.586
357°25'35"	45.431
344°11'05"	41.448
321°50'45"	37.441
294°56'	21.599
285°53'35"	23.915
277°50'15"	27.491
273°34'20"	27.63
265°48'40"	40.64
261°27'30"	45.187
268°23'55"	25.543
272°23'	25.593
281°12'35"	22.666
298°24'	20.477
309°06'	14.873
312°55'50"	62.848
323°08'40"	23.496
320°50'10"	22.432
317°38'10"	17.988
311°49'45"	21.674
311°16'50"	38.942
306°05'45"	15.109

ORIG CREEK TABLE

BEARING	DIST
294°47'10"	15.914
284°15'20"	19.77
270°29'	39.793
257°58'35"	18.43
233°35'05"	16.804
229°29'25"	17.46
252°08'55"	23.169
263°52'50"	16.469
276°32'10"	16.337
280°02'35"	8.168
300°15'40"	6.924
309°00'20"	20.498
323°14'20"	38.169
322°35'35"	34.002
315°22'	29.909
310°11'45"	23.541
302°52'15"	23.398
300°57'20"	10.767
294°09'55"	22.042
291°26'40"	29.172
288°43'25"	28.889
285°31'50"	33.179
286°11'20"	36.676

PERMANENT MARKS

PM	ORIGIN	BEARING	DIST	NO
11a-OPM	11a/SP351011	226°09'15"	82.248	38363



CONSERVATION AREA BOUNDARY PLAN

Over Lot 1 on RP14143, Lot 2 on RP14144, and Lot 2 on SP146445

LOCAL GOVERNMENT: REDLAND CITY LOCALITY: BIRKDALE

Scale: 1:5000
Format: STANDARD
State copyright reserved.

10580-CAB



Statewide Survey Group
ACN 120 434 924
(Callit Survey Holdings Pty Ltd)
CONSULTING SURVEYORS
AND TOWN PLANNERS
3/123 Link Road Victoria Park, QLD 4165
Email: info@statewidesurvey.com.au
Phone: 500 362 094

I Andrew Raymond HAYES, Cadastral Surveyor,
hereby certify that the details shown on this sketch
plan are correct.

Andrew Hayes
Cadastral Surveyor

Date: 02/12/2024

Meridian: SP351011

Survey Records: No

DIAGRAM B

Scale 1:750

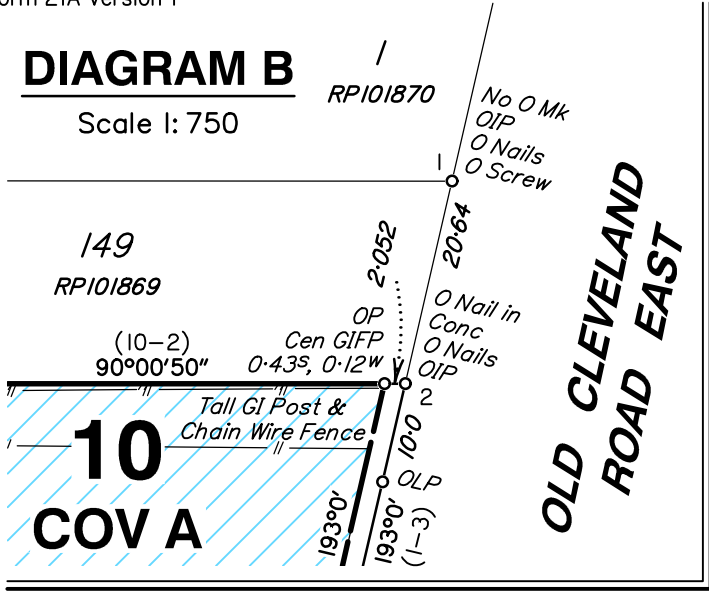


DIAGRAM A

Scale 1:2000

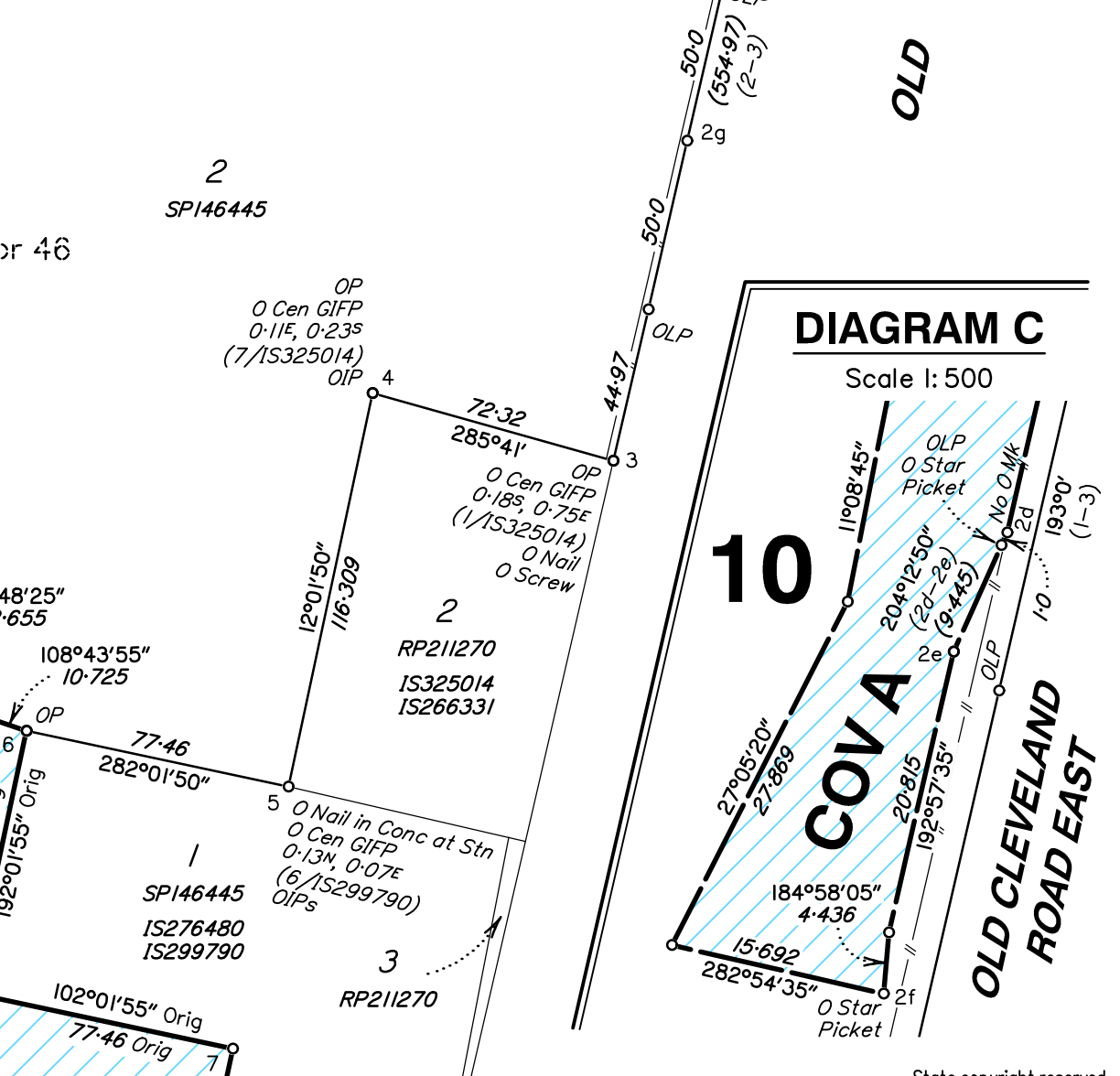
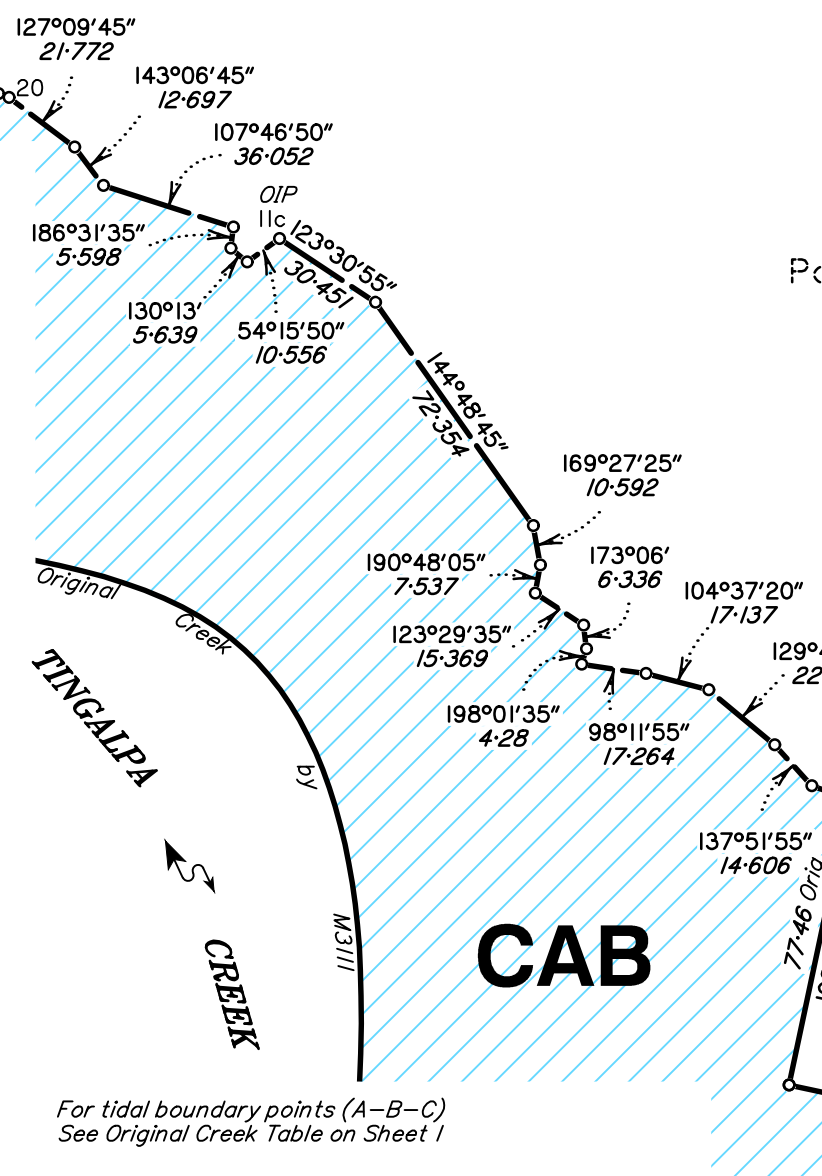
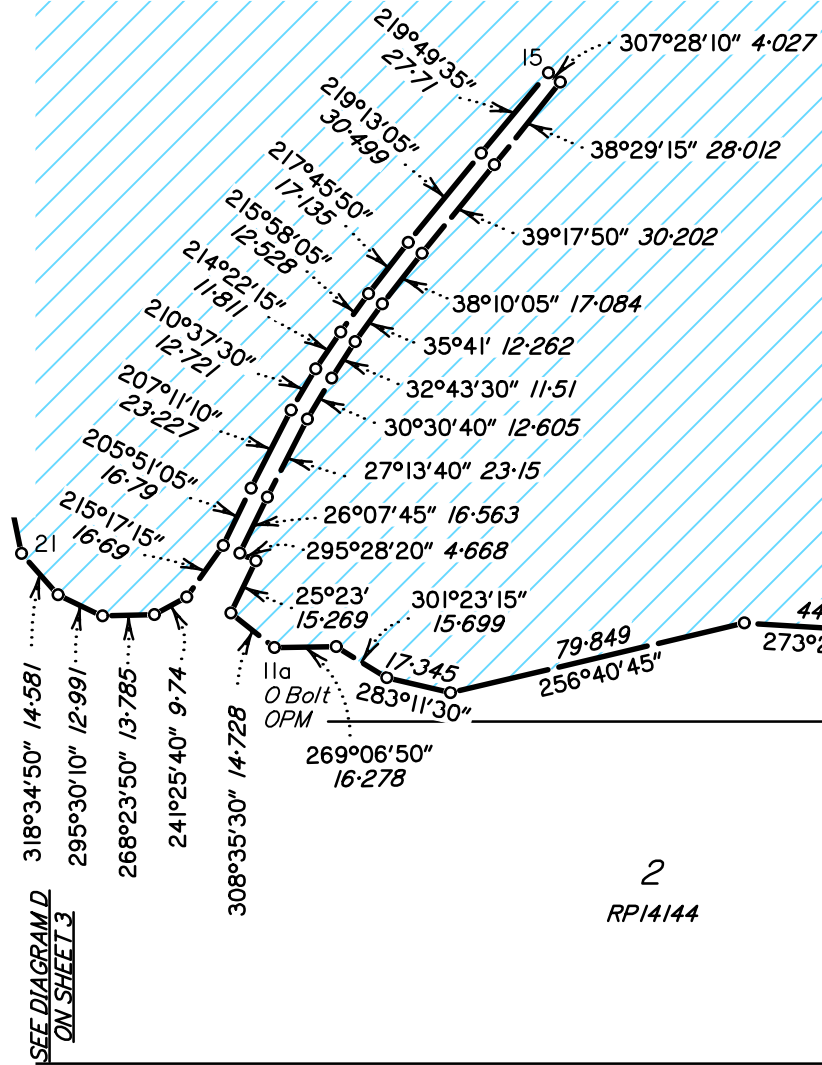
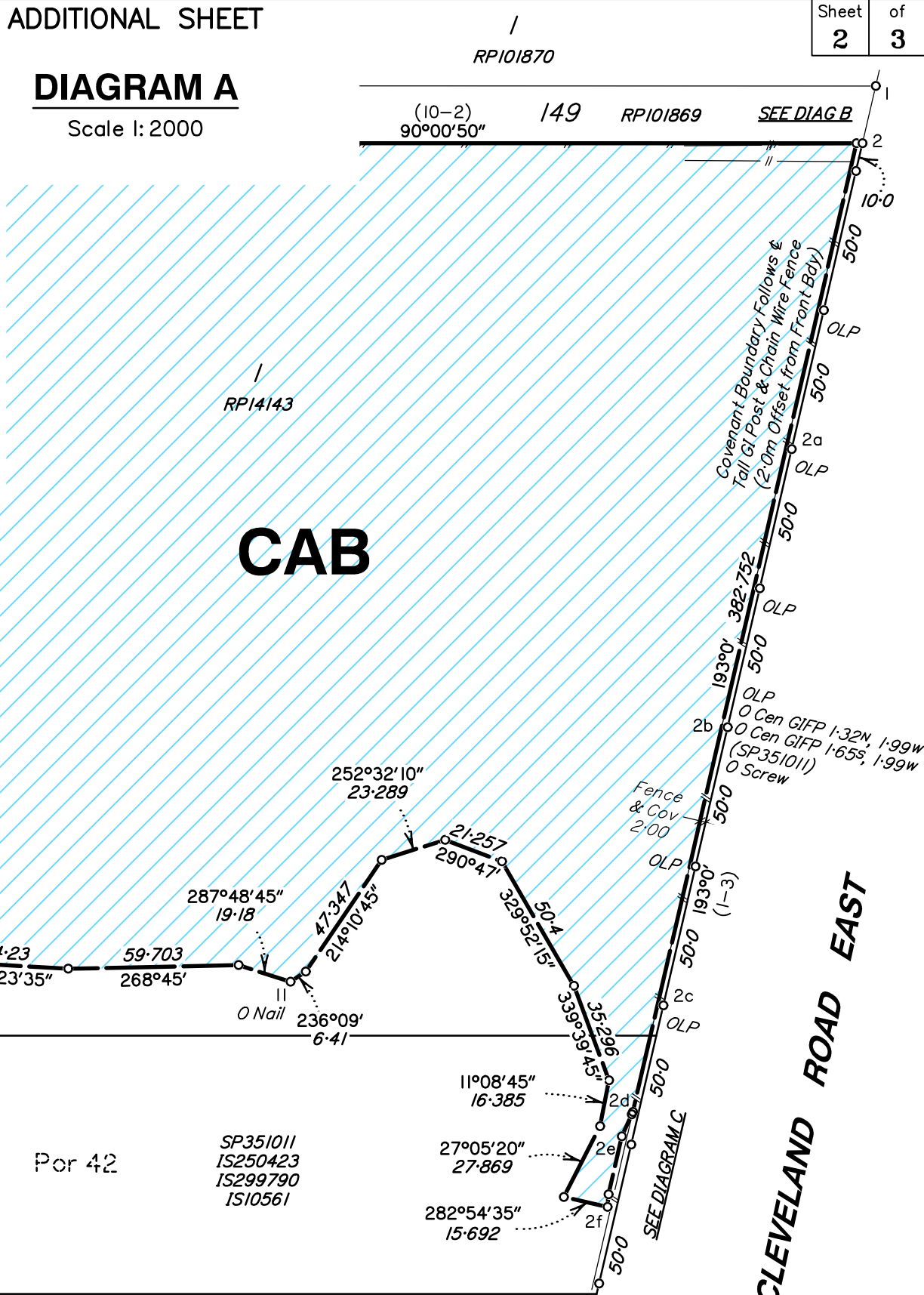
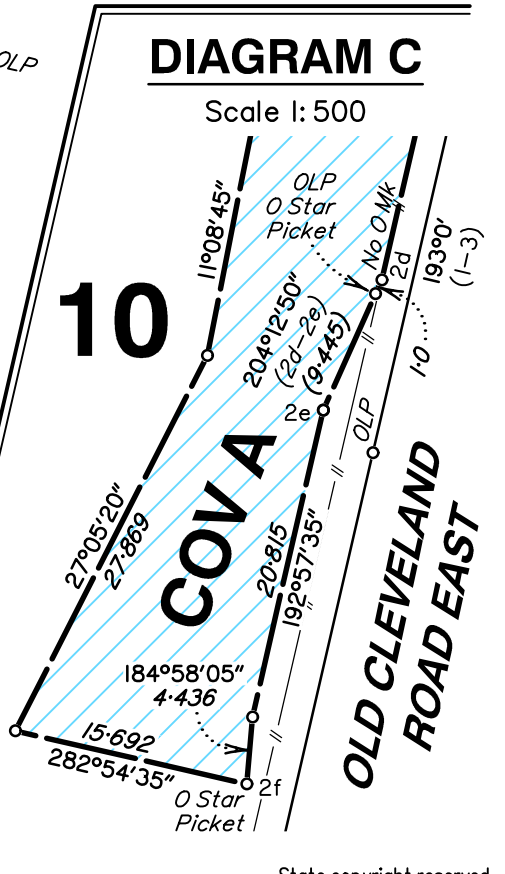
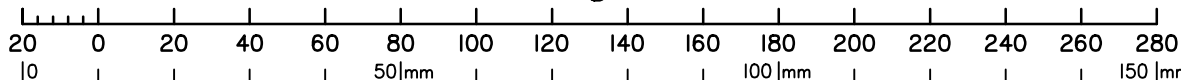


DIAGRAM C

Scale 1:500



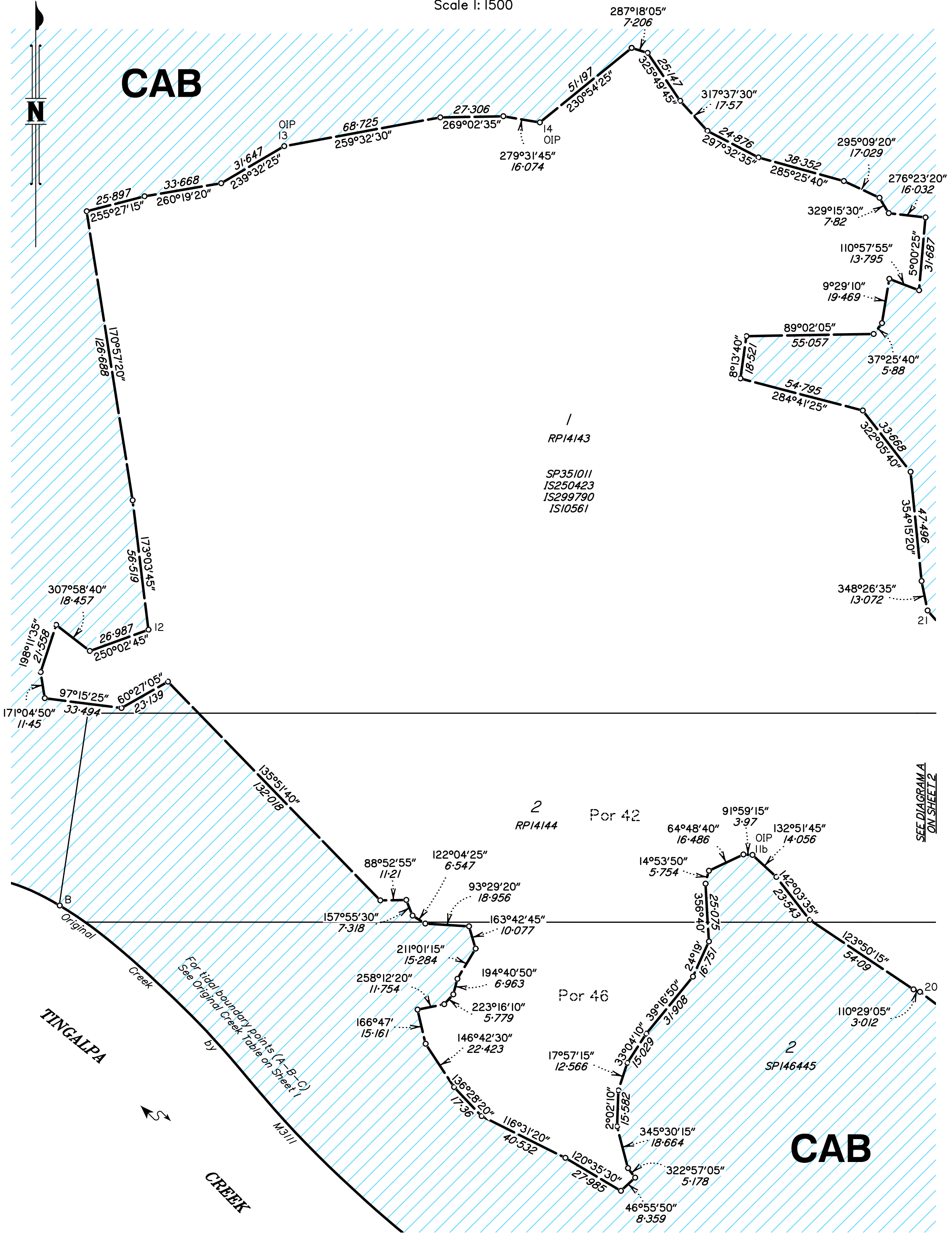
Scale 1:2000 - Lengths are in Metres.



Plan Status:
10580-CAB

DIAGRAM D

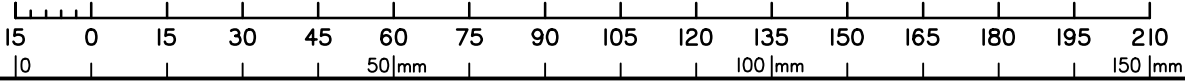
Scale 1:1500



CAB

CAB

Scale 1:1500 - Lengths are in Metres.



State copyright reserved.

Plan Status:
10580-CAB

SEE DIAGRAM A
ON SHEET 2

10580-24 JK VERSION 2