

2011 Census Fact Sheet - Population



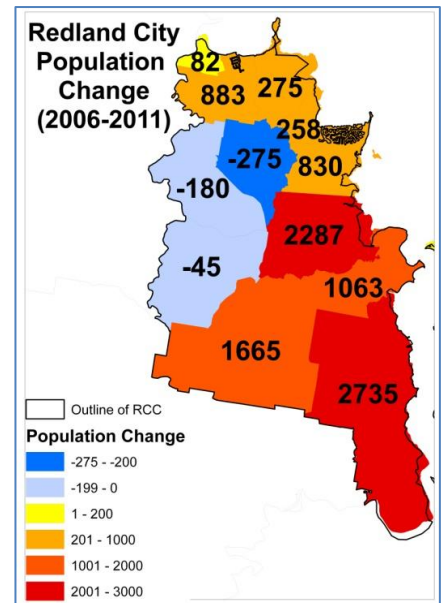
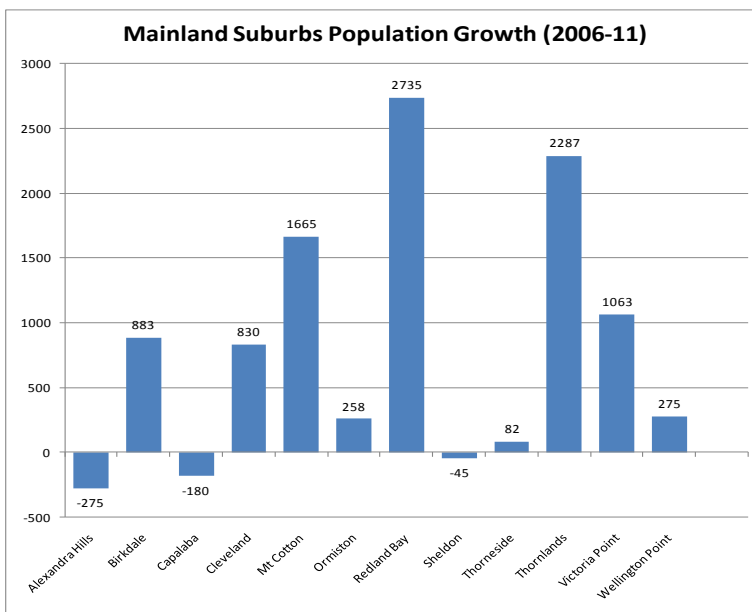
What's changed in five years?

- Redland City experienced an 8.6% growth of approximately 11,000 persons during the census period. This is an average annual growth figure of about 2,200 persons.
- The total mainland city growth was evenly split between males and females at 49% and 51%.

Suburbs	Census Year	
	2006	2011
Mainland	120,724	130,302
Alexandra Hills	16,985	16,710
Birkdale	13,461	14,344
Capalaba	17,098	16,918
Cleveland	13,584	14,414
Mt Cotton	3,139	4,804
Ormiston	5,383	5,641
Redland Bay	10,890	13,625
Sheldon	1,733	1,688
Thorneside	3,466	3,548
Thornlands	10,520	12,807
Victoria Point	13,753	14,816
Wellington Point	10,712	10,987

Suburbs	Census Year	
	2006	2011
Coochiemudlo Island	659	708
SMBI	4,232	5,630
Karragarra Island	124	160
Lamb Island	372	426
Macleay Island	1,958	2,571
Russell Island	1,778	2,473
NSI Townships	2,009	2,030
Amity	406	349
Dunwich	803	883
Point Lookout	669	678
Balance NSI Area	131	120
Redland City Total	127,624	138,670

Mainland Suburbs

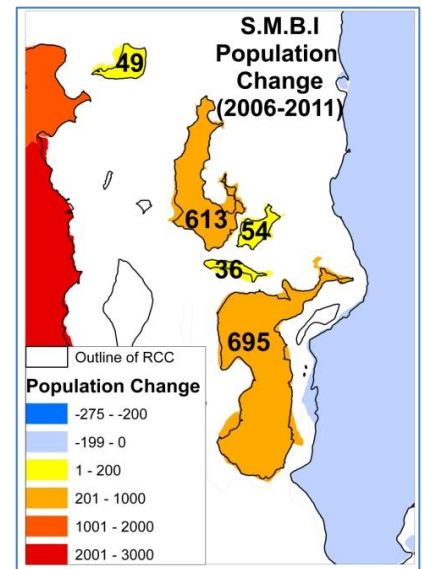
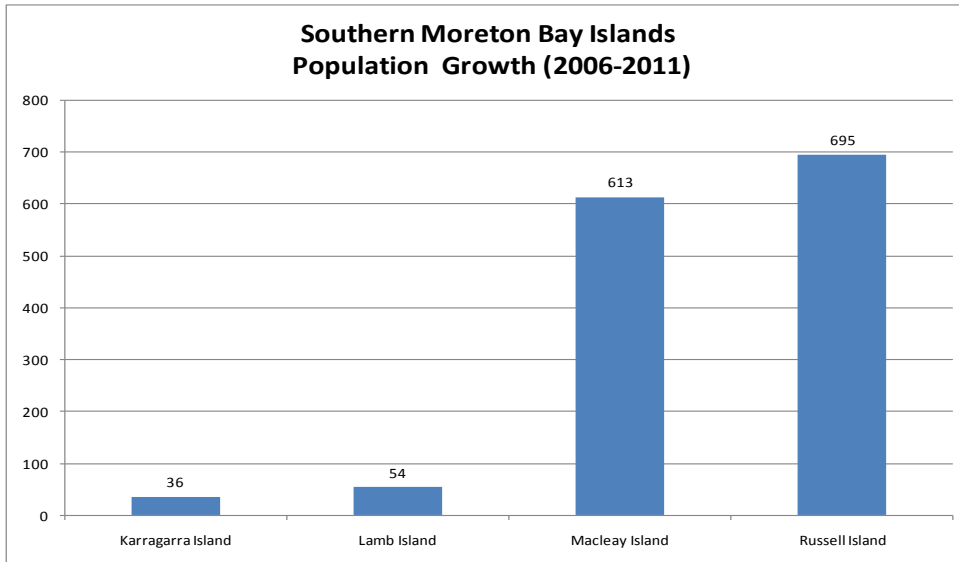


- Three suburbs each had more than 20% growth across the five year period. They were Mount Cotton (53%), Redland Bay (25%) and Thornlands (21%). These three suburbs account for more than 60% (or 6,687 persons) of all growth for the city during the census period.
- The city had a population decrease in three suburbs (Alexandra Hills, Capalaba and Sheldon). The total population decrease in these three suburbs was approximately 500 persons.

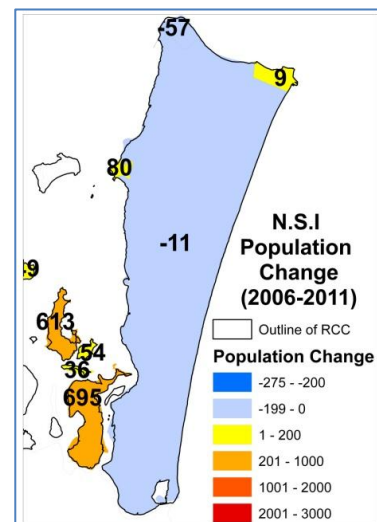
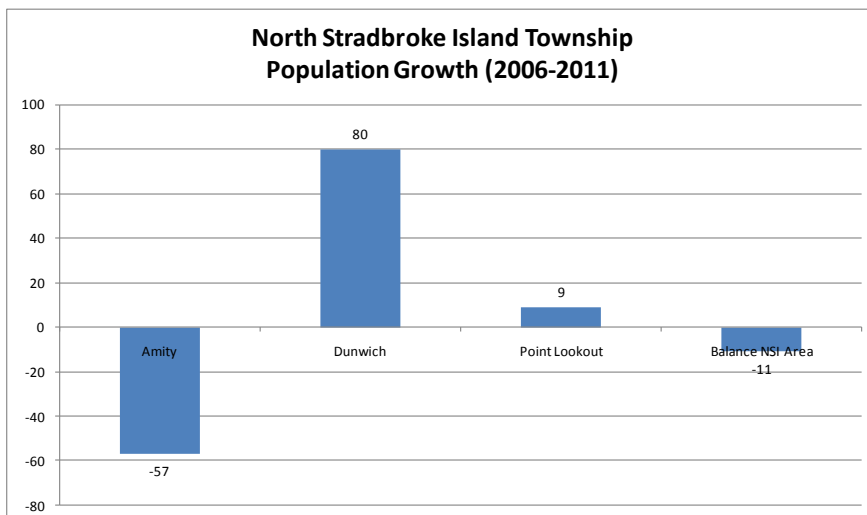
Island Communities

COOCHIEMUDLO ISLAND OVERVIEW		2006	2011	Difference	Total Person Growth	Total % Growth
Coochiemudlo	Males	329	335	6	49	7.4%
	Females	330	373	43		
	TOTAL	659	708	49		
	Median Age	51	52			

- Coochiemudlo Island had a modest growth period with a total of almost 50 persons, which equates to an average of 10 persons per year



- The combined SMBI population grew by 33% or approximately 1,400 persons. This shows that approximately 12% of the total city growth occurred on the Southern Moreton Bay Islands.
- Macleay Island grew by 613 persons (31%) while Russell Island had 695 persons growth (39%).



- Dunwich had a population growth of 80 persons (10%), and almost 70% of this growth was males.
- Both Amity (-57 persons) and the balance of NSI (-11 persons) experienced a population decrease.
- NSI had a very modest total growth of 21 persons (or 1%) for the 2006 – 2011 Census period.

NOTE:

Any discrepancies between totals and sums of components in this publication are due to rounding.