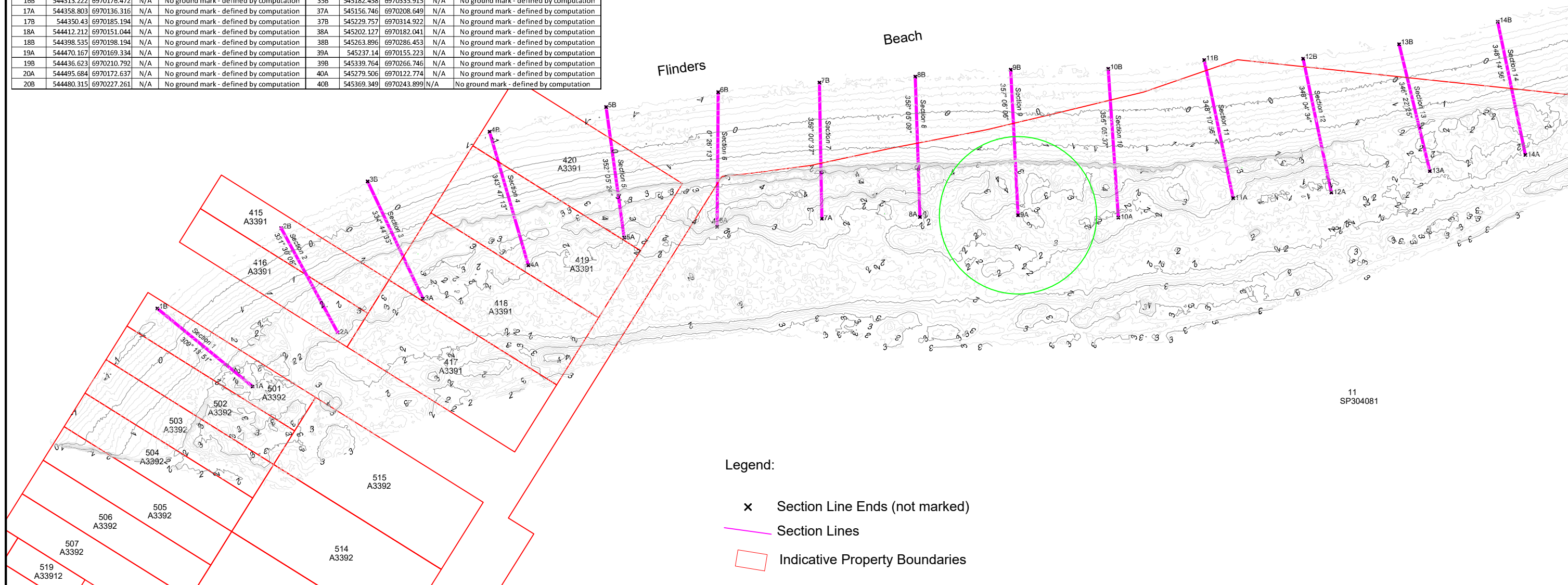


Section Control Mark Listing - MGA2020					Section Control Mark Listing - MGA2020				
Point ID	Easting	Northing	RL	Comments	Point ID	Easting	Northing	RL	Comments
1A	543576.98	6969964.92	N/A	No ground mark - defined by computation	21A	544569.369	6970204.016	N/A	No ground mark - defined by computation
1B	543528.49	6970004.51	N/A	No ground mark - defined by computation	21B	544527.581	6970251.078	N/A	No ground mark - defined by computation
2A	543620.21	6969992.41	N/A	No ground mark - defined by computation	22A	544602.881	6970221.591	N/A	No ground mark - defined by computation
2B	543591.45	6970045.37	N/A	No ground mark - defined by computation	22B	544572.46	6970276.278	N/A	No ground mark - defined by computation
3A	543663.568	6970009.523	N/A	No ground mark - defined by computation	23A	544647.525	6970255.085	N/A	No ground mark - defined by computation
3B	543635.447	6970069.129	N/A	No ground mark - defined by computation	23B	544613.657	6970299.734	N/A	No ground mark - defined by computation
4A	543717.196	6970026.499	N/A	No ground mark - defined by computation	24A	544689.031	6970282.437	N/A	No ground mark - defined by computation
4B	543697.465	6970094.356	N/A	No ground mark - defined by computation	24B	544656.289	6970326.248	N/A	No ground mark - defined by computation
5A	543765.915	6970040.611	N/A	No ground mark - defined by computation	25A	544731.358	6970312.899	N/A	No ground mark - defined by computation
5B	543756.699	6970106.945	N/A	No ground mark - defined by computation	25B	544696.28	6970355.755	N/A	No ground mark - defined by computation
6A	543813.2	6970046.059	N/A	No ground mark - defined by computation	26A	544775.971	6970349.301	N/A	No ground mark - defined by computation
6B	543813.722	6970114.488	N/A	No ground mark - defined by computation	26B	544725.893	6970388.403	N/A	No ground mark - defined by computation
7A	543866.422	6970050.193	N/A	No ground mark - defined by computation	27A	544719.054	6970439.939	N/A	No ground mark - defined by computation
7B	543865.227	6970119.337	N/A	No ground mark - defined by computation	27B	544754.72	6970562.414	N/A	No ground mark - defined by computation
8A	543916.334	6970051.055	N/A	No ground mark - defined by computation	28A	544755.98	6970402.403	N/A	No ground mark - defined by computation
8B	543913.95	6970122.373	N/A	No ground mark - defined by computation	28B	544809.345	6970545.349	N/A	No ground mark - defined by computation
9A	543966.24	6970051.917	N/A	No ground mark - defined by computation	29A	544800.295	6970381.006	N/A	No ground mark - defined by computation
9B	543962.494	6970125.907	N/A	No ground mark - defined by computation	29B	544860.114	6970525.494	N/A	No ground mark - defined by computation
10A	544017.225	6970050.771	N/A	No ground mark - defined by computation	30A	544843.132	6970363.271	N/A	No ground mark - defined by computation
10B	544012.062	6970126.379	N/A	No ground mark - defined by computation	30B	544918.607	6970502.574	N/A	No ground mark - defined by computation
11A	544075.599	6970060.608	N/A	No ground mark - defined by computation	31A	544901.154	6970364.006	N/A	No ground mark - defined by computation
11B	544060.912	6970130.802	N/A	No ground mark - defined by computation	31B	544956.248	6970490.959	N/A	No ground mark - defined by computation
12A	544125.577	6970063.502	N/A	No ground mark - defined by computation	32A	544943.265	6970332.238	N/A	No ground mark - defined by computation
12B	544111.221	6970131.485	N/A	No ground mark - defined by computation	32B	545011.512	6970463.06	N/A	No ground mark - defined by computation
13A	544175.645	6970074.38	N/A	No ground mark - defined by computation	33A	544986.663	6970313.921	N/A	No ground mark - defined by computation
13B	544160.02	6970138.836	N/A	No ground mark - defined by computation	33B	545056.453	6970427.685	N/A	No ground mark - defined by computation
14A	544224.258	6970082.576	N/A	No ground mark - defined by computation	34A	545031.07	6970289.976	N/A	No ground mark - defined by computation
14B	544210.195	6970150.178	N/A	No ground mark - defined by computation	34B	545097.228	6970398.633	N/A	No ground mark - defined by computation
15A	544271.299	6970104.019	N/A	No ground mark - defined by computation	35A	545073.628	6970264.064	N/A	No ground mark - defined by computation
15B	544259.034	6970163.515	N/A	No ground mark - defined by computation	35B	545141.015	6970366.521	N/A	No ground mark - defined by computation
16A	544320.215	6970133.979	N/A	No ground mark - defined by computation	36A	545115.351	6970236.626	N/A	No ground mark - defined by computation
16B	544313.222	6970176.472	N/A	No ground mark - defined by computation	36B	545182.458	6970335.915	N/A	No ground mark - defined by computation
17A	544358.803	6970136.316	N/A	No ground mark - defined by computation	37A	545156.746	6970208.649	N/A	No ground mark - defined by computation
17B	544350.43	6970185.194	N/A	No ground mark - defined by computation	37B	545229.757	6970314.922	N/A	No ground mark - defined by computation
18A	544412.212	6970151.044	N/A	No ground mark - defined by computation	38A	545202.127	6970182.041	N/A	No ground mark - defined by computation
18B	544398.535	6970198.194	N/A	No ground mark - defined by computation	38B	545263.896	6970286.453	N/A	No ground mark - defined by computation
19A	544470.167	6970169.334	N/A	No ground mark - defined by computation	39A	545237.14	6970155.223	N/A	No ground mark - defined by computation
19B	544436.623	6970210.792	N/A	No ground mark - defined by computation	39B	545339.764	6970266.746	N/A	No ground mark - defined by computation
20A	544495.684	6970172.637	N/A	No ground mark - defined by computation	40A	545279.506	6970122.774	N/A	No ground mark - defined by computation
20B	544480.315	6970227.261	N/A	No ground mark - defined by computation	40B	545369.349	6970243.899	N/A	No ground mark - defined by computation



- Legend:
- × Section Line Ends (not marked)
 - Section Lines
 - Indicative Property Boundaries

Notes:

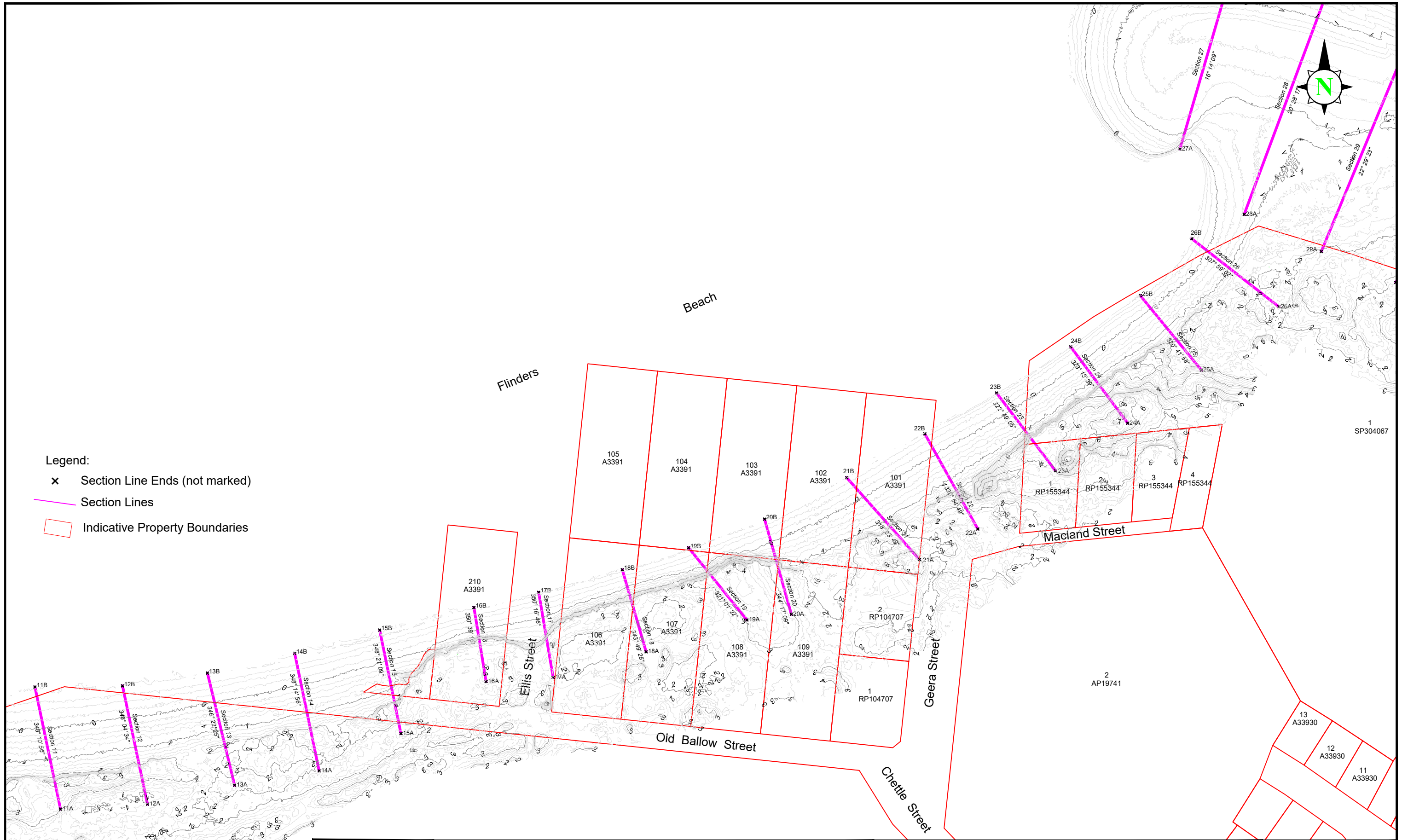
- Horizontal Datum is MGA2020 based on AAM1,AAM2,AAM19 and PM203850 (From AUSPOS).
- Vertical Datum is AHD derived from PM200518 (From spirit levelling).
- The title boundaries shown hereon are a DCDB supplied by Redland City Council.
- The ground contours were captured by UAV-mounted LiDAR.



27/07/2022	Original Issue	JL/DM	JL	PE	
Rev.	Surveyed	Revision Description	Surveyor	Processed	Checked
		AAM	Level 1, Leichhardt Court 55 Little Edward Street Spring Hill QLD 4000		
		A Woolpert Company	Ph (07) 3620 3111 Fax (07) 3620 3133 Email: info@aamgroup.com ABN 63 106 160 678		

Client :	Redland City Council
Project :	Flinders Beach
Description :	Foreshore Contours and Transect Locations
Authority : Redland City Council	Horizontal Grid : MGA2020
Map Ref : 9543-2214	Vertical Datum : AHD
Scale :	1:2000 @ A3

Ref. No. :	--
JOB No. :	40225
DWG No. :	40225.13.dwg
Sheet No.:	1 of 3 sheets



- Legend:**
- ✕ Section Line Ends (not marked)
 - Section Lines
 - Indicative Property Boundaries

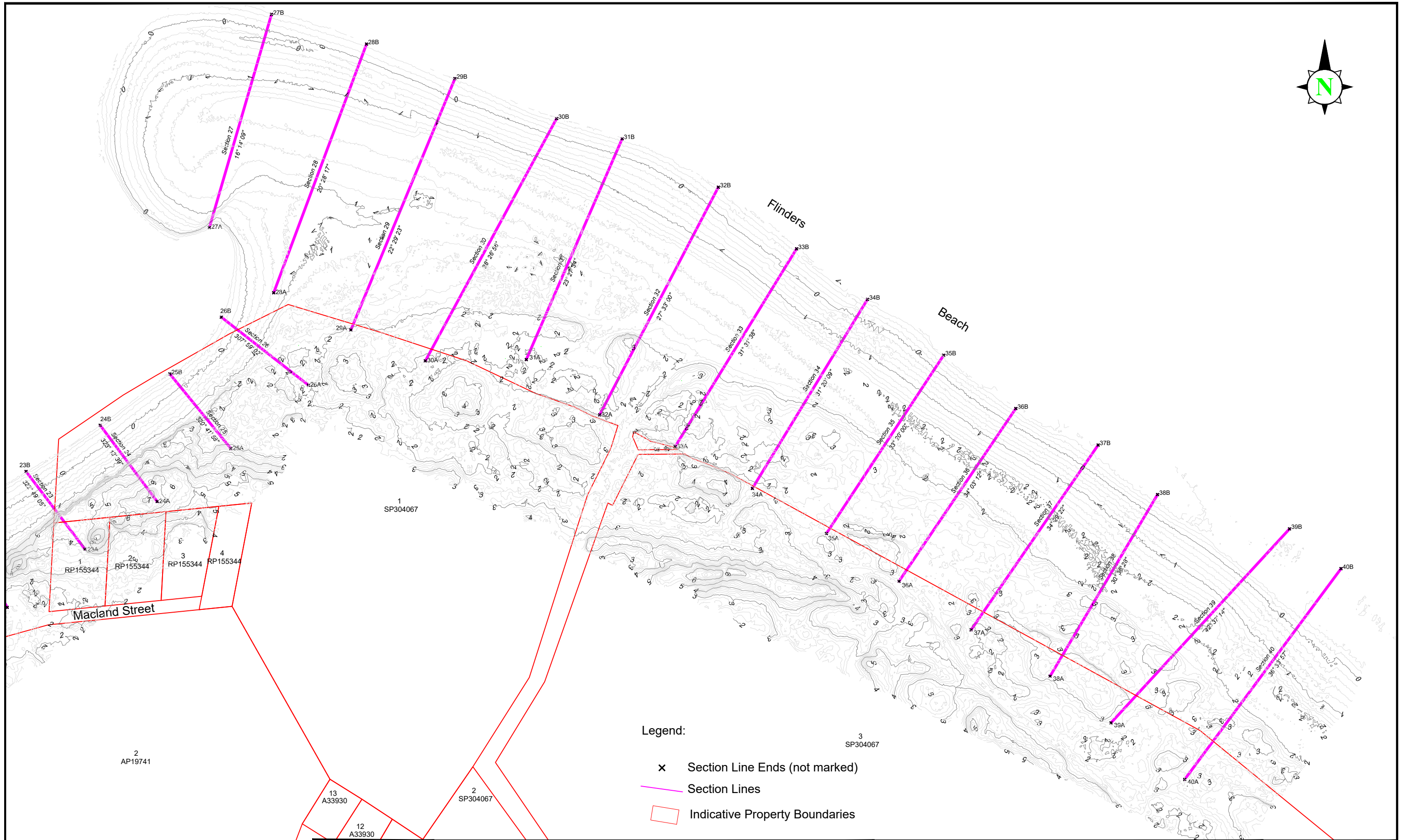
- Notes:**
- Horizontal Datum is MGA2020 based on AAM1, AAM2, AAM19 and PM203850 (From AUSPOS).
 - Vertical Datum is AHD derived from PM200518 (From spirit levelling).
 - The title boundaries shown hereon are a DCDB supplied by Redland City Council.
 - The ground contours were captured by UAV-mounted LiDAR.



27/07/2022	Original Issue	JL/DM	JL	PE	
Rev.	Surveyed	Revision Description	Surveyor	Processed	Checked
		AAM	Level 1, Leichhardt Court 55 Little Edward Street Spring Hill QLD 4000		
		A WOOLPERT COMPANY	Ph (07) 3620 3111 Fax (07) 3620 3133 Email: info@aamgroup.com ABN 63 106 160 678		

Client :	Redland City Council
Project :	Flinders Beach
Description :	Foreshore Contours and Transect Locations
Authority : Redland City Council	Horizontal Grid : MGA2020
Map Ref : 9543-2214	Vertical Datum : AHD
Scale :	1:2000 @ A3

Ref. No. :	--
JOB No. :	40225
DWG No. :	40225.13.dwg
Sheet No. :	2 of 3 sheets



Notes:

- Horizontal Datum is MGA2020 based on AAM1,AAM2,AAM19 and PM203850 (From AUSPOS).
- Vertical Datum is AHD derived from PM200518 (From spirit levelling).
- The title boundaries shown hereon are a DCDB supplied by Redland City Council.
- The ground contours were captured by UAV-mounted LiDAR.



Rev.	Surveyed	Revision Description	Surveyor	Processed	Checked
--	27/07/2022	Original Issue	JL/DM	JL	PE
			Level 1, Leichhardt Court 55 Little Edward Street Spring Hill QLD 4000 Ph (07) 3620 3111 Fax (07) 3620 3133 Email: info@aamgroup.com ABN 63 106 160 678		

Client :	Redland City Council
Project :	Flinders Beach
Description :	Foreshore Contours and Transect Locations
Authority : Redland City Council	Horizontal Grid : MGA2020
Map Ref : 9543-2214	Vertical Datum : AHD
Scale : 1:2000 @ A3	

Ref. No. :	--
JOB No. :	40225
DWG No. :	40225.13.dwg
Sheet No. :	3 of 3 sheets