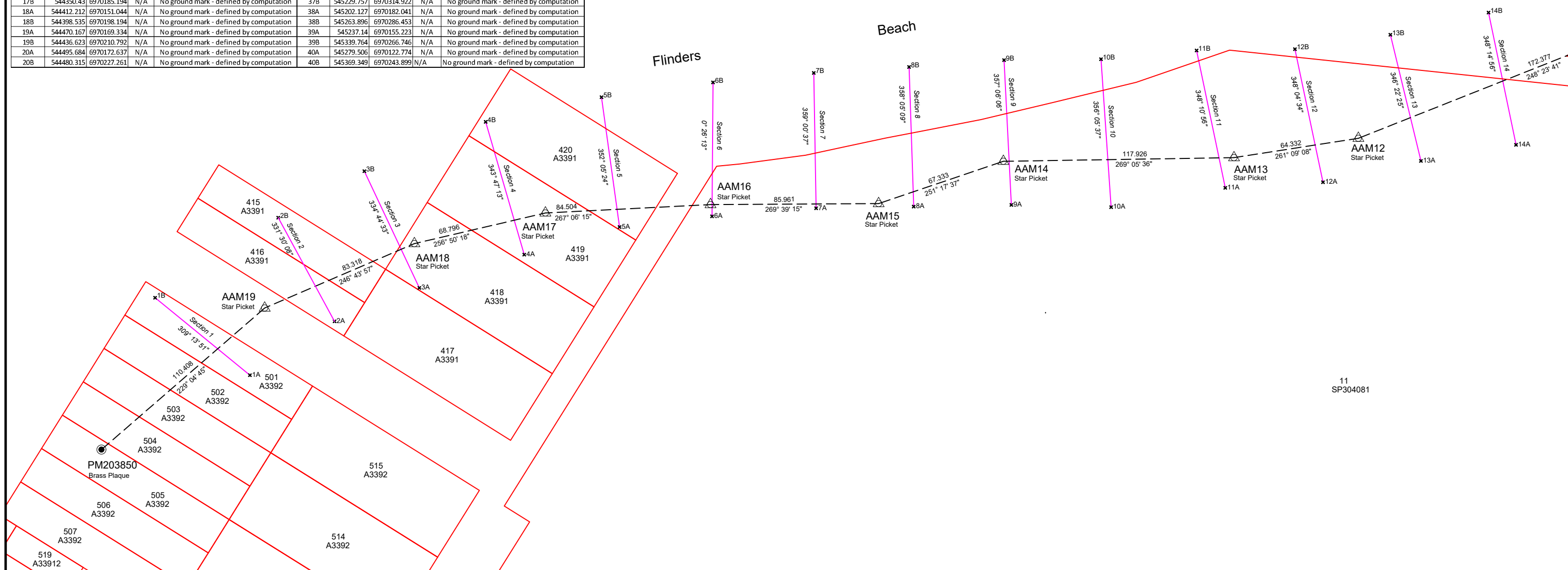


Section Control Mark Listing - MGA2020					Section Control Mark Listing - MGA2020				
Point ID	Easting	Northing	RL	Comments	Point ID	Easting	Northing	RL	Comments
1A	543576.98	6969964.92	N/A	No ground mark - defined by computation	21A	544569.369	6970204.016	N/A	No ground mark - defined by computation
1B	543528.49	6970004.51	N/A	No ground mark - defined by computation	21B	544527.581	6970251.078	N/A	No ground mark - defined by computation
2A	543620.21	6969992.41	N/A	No ground mark - defined by computation	22A	544602.881	6970221.591	N/A	No ground mark - defined by computation
2B	543591.45	6970045.37	N/A	No ground mark - defined by computation	22B	544572.46	6970276.278	N/A	No ground mark - defined by computation
3A	543635.568	6970009.523	N/A	No ground mark - defined by computation	23A	544647.525	6970255.085	N/A	No ground mark - defined by computation
3B	543635.447	6970069.129	N/A	No ground mark - defined by computation	23B	544613.657	6970299.734	N/A	No ground mark - defined by computation
4A	543717.196	6970026.499	N/A	No ground mark - defined by computation	24A	544689.031	6970282.437	N/A	No ground mark - defined by computation
4B	543697.465	6970094.356	N/A	No ground mark - defined by computation	24B	544656.289	6970326.248	N/A	No ground mark - defined by computation
5A	543765.915	6970040.611	N/A	No ground mark - defined by computation	25A	544731.358	6970312.899	N/A	No ground mark - defined by computation
5B	543756.699	6970106.945	N/A	No ground mark - defined by computation	25B	544696.28	6970355.755	N/A	No ground mark - defined by computation
6A	543813.2	6970046.059	N/A	No ground mark - defined by computation	26A	544775.971	6970349.301	N/A	No ground mark - defined by computation
6B	543813.722	6970114.488	N/A	No ground mark - defined by computation	26B	544725.893	6970388.403	N/A	No ground mark - defined by computation
7A	543866.422	6970050.193	N/A	No ground mark - defined by computation	27A	544719.054	6970439.939	N/A	No ground mark - defined by computation
7B	543865.227	6970119.337	N/A	No ground mark - defined by computation	27B	544754.72	6970562.414	N/A	No ground mark - defined by computation
8A	543916.334	6970051.055	N/A	No ground mark - defined by computation	28A	544755.98	6970402.403	N/A	No ground mark - defined by computation
8B	543913.95	6970122.373	N/A	No ground mark - defined by computation	28B	544809.345	6970545.349	N/A	No ground mark - defined by computation
9A	543966.24	6970051.917	N/A	No ground mark - defined by computation	29A	544800.295	6970381.006	N/A	No ground mark - defined by computation
9B	543962.494	6970125.907	N/A	No ground mark - defined by computation	29B	544860.114	6970525.494	N/A	No ground mark - defined by computation
10A	544017.225	6970050.771	N/A	No ground mark - defined by computation	30A	544843.132	6970363.271	N/A	No ground mark - defined by computation
10B	544012.062	6970126.379	N/A	No ground mark - defined by computation	30B	544918.607	6970502.574	N/A	No ground mark - defined by computation
11A	544075.599	6970060.608	N/A	No ground mark - defined by computation	31A	544901.154	6970364.006	N/A	No ground mark - defined by computation
11B	544060.912	6970130.802	N/A	No ground mark - defined by computation	31B	544956.248	6970490.959	N/A	No ground mark - defined by computation
12A	544125.577	6970063.502	N/A	No ground mark - defined by computation	32A	544943.265	6970332.238	N/A	No ground mark - defined by computation
12B	544111.221	6970131.485	N/A	No ground mark - defined by computation	32B	545011.512	6970463.06	N/A	No ground mark - defined by computation
13A	544175.645	6970074.38	N/A	No ground mark - defined by computation	33A	544986.663	6970313.921	N/A	No ground mark - defined by computation
13B	544160.02	6970138.836	N/A	No ground mark - defined by computation	33B	545056.453	6970427.685	N/A	No ground mark - defined by computation
14A	544224.258	6970082.576	N/A	No ground mark - defined by computation	34A	545031.07	6970289.976	N/A	No ground mark - defined by computation
14B	544210.195	6970150.178	N/A	No ground mark - defined by computation	34B	545097.228	6970398.633	N/A	No ground mark - defined by computation
15A	544271.299	6970104.019	N/A	No ground mark - defined by computation	35A	545073.628	6970264.064	N/A	No ground mark - defined by computation
15B	544259.034	6970163.515	N/A	No ground mark - defined by computation	35B	545141.015	6970366.521	N/A	No ground mark - defined by computation
16A	544320.215	6970133.979	N/A	No ground mark - defined by computation	36A	545115.351	6970236.626	N/A	No ground mark - defined by computation
16B	544313.222	6970176.472	N/A	No ground mark - defined by computation	36B	545182.458	6970335.915	N/A	No ground mark - defined by computation
17A	544358.803	6970136.316	N/A	No ground mark - defined by computation	37A	545156.746	6970208.649	N/A	No ground mark - defined by computation
17B	544350.43	6970185.194	N/A	No ground mark - defined by computation	37B	545229.757	6970314.922	N/A	No ground mark - defined by computation
18A	544412.212	6970151.044	N/A	No ground mark - defined by computation	38A	545202.127	6970182.041	N/A	No ground mark - defined by computation
18B	544398.535	6970198.194	N/A	No ground mark - defined by computation	38B	545263.896	6970286.453	N/A	No ground mark - defined by computation
19A	544470.167	6970169.334	N/A	No ground mark - defined by computation	39A	545237.14	6970155.223	N/A	No ground mark - defined by computation
19B	544436.623	6970210.792	N/A	No ground mark - defined by computation	39B	545339.764	6970266.746	N/A	No ground mark - defined by computation
20A	544495.684	6970172.637	N/A	No ground mark - defined by computation	40A	545279.506	6970122.774	N/A	No ground mark - defined by computation
20B	544480.315	6970227.261	N/A	No ground mark - defined by computation	40B	545369.349	6970243.899	N/A	No ground mark - defined by computation

Control Mark Listing (MGA2020)					
Point ID	Easting	Northing	RL	Mark Type	Comments
AAM01	545305.827	6970137.907	3.120	Star Picket	From AUSPOS
AAM02	545177.641	6970242.895	2.567	Star Picket	From AUSPOS
AAM03	544990.437	6970351.797	3.033	Star Picket	From terrestrial traverse and leveling.
AAM04	544909.597	6970371.374	2.015	Star Picket	From terrestrial traverse and leveling.
AAM05	544889.121	6970364.455	2.134	Star Picket	From terrestrial traverse and leveling.
AAM06	544828.382	6970377.535	2.393	Star Picket	From terrestrial traverse and leveling.
AAM07	544770.317	6970372.029	2.019	Star Picket	From terrestrial traverse and leveling.
AAM08	544733.675	6970351.029	2.199	Star Picket	From terrestrial traverse and leveling.
AAM09	544633.246	6970272.240	4.877	Star Picket	From terrestrial traverse and leveling.
AAM10	544455.462	6970198.562	4.023	Screw in Rock	From terrestrial traverse and leveling.
AAM11	544303.908	6970149.424	3.283	Screw in Rock	From terrestrial traverse and leveling.
AAM12	544143.642	6970085.953	1.944	Star Picket	From terrestrial traverse and leveling.
AAM13	544080.075	6970076.058	3.234	Star Picket	From terrestrial traverse and leveling.
AAM14	543962.164	6970074.192	3.509	Star Picket	From terrestrial traverse and leveling.
AAM15	543898.388	6970052.597	2.343	Star Picket	From terrestrial traverse and leveling.
AAM16	543812.428	6970052.078	4.540	Star Picket	From terrestrial traverse and leveling.
AAM17	543728.032	6970047.809	2.837	Star Picket	From terrestrial traverse and leveling.
AAM18	543661.043	6970032.144	2.351	Star Picket	From terrestrial traverse and leveling.
AAM19	543584.501	6969999.231	2.047	Star Picket	From AUSPOS
PM230850	543501.075	6969926.912	2.782	Brass Plaque	From AUSPOS



Notes:

- Horizontal Datum is MGA2020 based on AAM1,AAM2,AAM19 and PM203850 (From AUSPOS).
- Vertical Datum is AHD derived from PM200518 (From spirit levelling).
- Traverse surveyed by total station, starting from AAM2 and closing onto AAM19. The resultant traverse angular misclose was 16", the distance misclose was 0.012m.



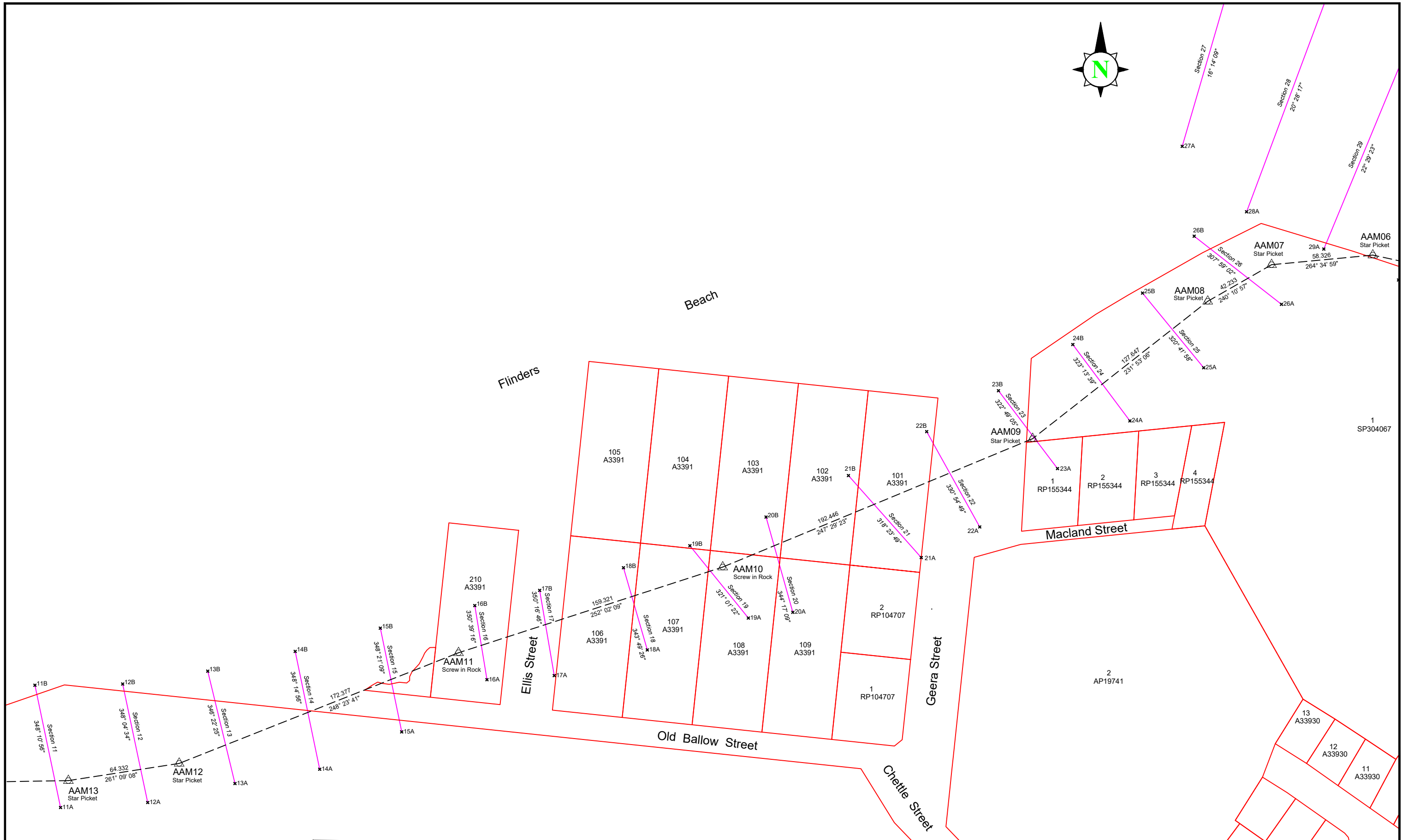
Rev.	Surveyed	Revision Description	Surveyor	Processed	Checked
--	27/07/2022	Original Issue - Foreshore Survey	JL/BM	JL	PE

**AAM**  
A WOOLPERT COMPANY

Level 1, Leichhardt Court  
55 Little Edward Street  
Spring Hill  
QLD 4000

Ph (07) 3620 3111  
Fax (07) 3620 3133  
Email: info@aamgroup.com  
ABN 63 106 160 678

<b>Client :</b>	Redland City Council	<b>Ref. No. :</b>	--
<b>Project :</b>	Flinders Beach	<b>JOB No. :</b>	40225
<b>Description :</b>	Control Diagram	<b>DWG No. :</b>	40225.12.dwg
<b>Authority :</b> Redland City Council	<b>Horizontal Grid :</b> MGA2020	<b>Scale :</b>	1:2000@ A3
<b>Map Ref :</b> 9543-2214	<b>Vertical Datum :</b> AHD	<b>Sheet No.:</b> 1 of 3 sheets	



Notes:

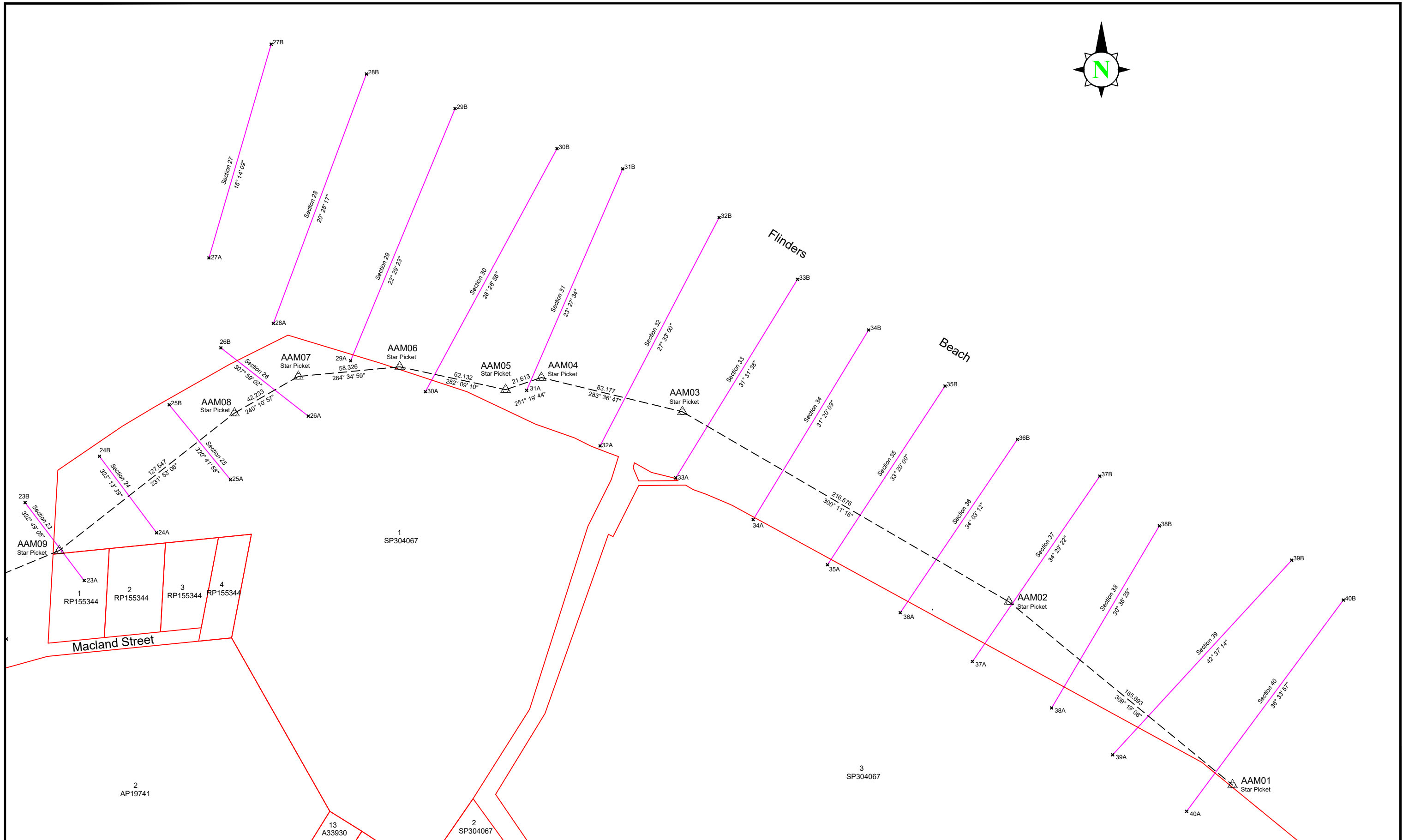
- Horizontal Datum is MGA2020 based on AAM1,AAM2,AAM19 and PM203850 (From AUSPOS).
- Vertical Datum is AHD derived from PM200518 (From spirit levelling).
- Traverse surveyed by total station, starting from AAM2 and closing onto AAM19. The resultant traverse angular misclose was 16", the distance misclose was 0.012m.



Rev.	27/07/2022	Original Issue - Foreshore Survey	JL/BM	JL	PE
Surveyed		Revision Description	Surveyor	Processed	Checked
			Level 1, Leichhardt Court 55 Little Edward Street Spring Hill QLD 4000 Ph (07) 3620 3111 Fax (07) 3620 3133 Email: info@aamgroup.com ABN 63 106 160 678		

Client :	Redland City Council
Project :	Flinders Beach
Description :	Control Diagram
Authority :	Redland City Council
Map Ref :	9543-2214
Horizontal Grid :	MGA2020
Vertical Datum :	AHD
Scale :	1:2000@ A3

Ref. No. :	--
JOB No. :	40225
DWG No. :	40225.12.dwg
Sheet No.:	2 of 3 sheets



Notes:

- Horizontal Datum is MGA2020 based on AAM1,AAM2,AAM19 and PM203850 (From AUSPOS).
- Vertical Datum is AHD derived from PM200518 (From spirit levelling).
- Traverse surveyed by total station, starting from AAM2 and closing onto AAM19. The resultant traverse angular misclose was 16", the distance misclose was 0.012m.



Rev.	Surveyed	Revision Description	Surveyor	Processed	Checked
--	27/07/2022	Original Issue - Foreshore Survey	JL/BM	JL	PE
			Level 1, Leichhardt Court 55 Little Edward Street Spring Hill QLD 4000 Ph (07) 3620 3111 Fax (07) 3620 3133 Email: info@aamgroup.com ABN 63 106 160 678		

<b>Client :</b>	Redland City Council
<b>Project :</b>	Flinders Beach
<b>Description :</b>	Control Diagram
<b>Authority :</b> Redland City Council	<b>Horizontal Grid :</b> MGA2020
<b>Map Ref :</b> 9543-2214	<b>Vertical Datum :</b> AHD
<b>Scale :</b> 1:2000@ A3	

<b>Ref. No. :</b>	--
<b>JOB No. :</b>	40225
<b>DWG No. :</b>	40225.12.dwg
<b>Sheet No. :</b>	3 of 3 sheets