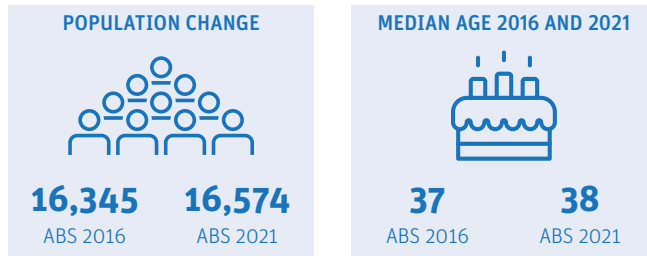


Alexandra Hills

Demographic snapshot 2021 Census

How has Alexandra Hills changed since the last Census (2016)

Population and age Breakdown



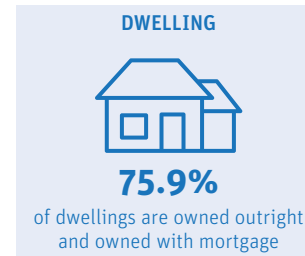
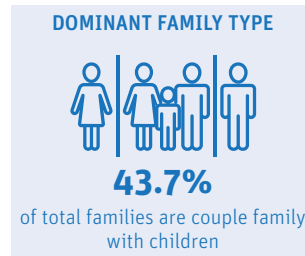
Alexandra Hills experienced a modest increase in population between 2016-2021, growing from 16,345 to 16,574 persons (or 1.4% growth). The suburb had a slightly younger demographic with median age of residents at 38 years old compared to 43 for Redland City. Over the last five years, the age profile shifted towards older people (65 and over) with the proportion to total population increasing from 13% in 2016 to 16% in 2021.

AGE BREAKDOWN		
2016	AGE	2021
20.10%	0-14	19.50%
67.10%	15-64	64.60%
12.80%	65+	15.90%

Who is a typical Alexandra Hills resident*



Family and dwelling

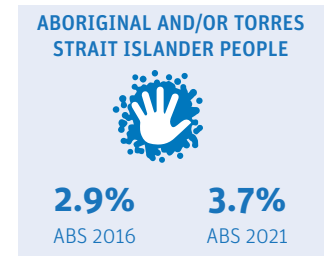
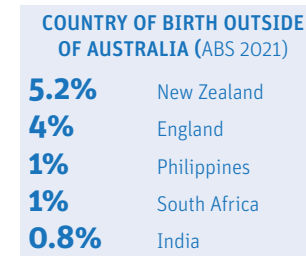


Couples with children continued to be the dominant family type in Alexandra Hills but had slightly declined since the previous Census period (from 46% to 44%). In 2021, family households continued to be the dominant household composition in Alexandra Hills. However, lone person households experienced a significant change between the Census periods as it increased by 12%.

	HOUSEHOLD COMPOSITION		
	2016	2021	Change
Family	79.56%	78.70%	▼
Single or lone person	17.70%	18.90%	▲
Group	2.80%	2.40%	▼

	MEDIANS		
	2016	2021	Change
Rent (weekly)	\$375	\$400	▲
Mortgage (monthly)	\$1820	\$1829	▲
House income (weekly)	\$1600	\$1837	▲

Characteristics



Majority of residents were born in Australia (77%), and 3.7% of residents identified as Aboriginal and/or Torres Strait Islander. Almost 1 in 3 residents (32%) reported having one or more long term health conditions. Almost a thousand residents (990) reported requiring assistance with core activities due to a disability. About 41% of residents who reported the need for assistance were older people (65+).

LONG-TERM HEALTH CONDITION	
11%	Mental health
10%	Asthma
9.2%	Other long-term
9.1%	Arthritis
5.2%	Diabetes

CORE ACTIVITY NEED FOR ASSISTANCE BY AGE		
AGE	NO.	%
0-14	166	16.8
15-24	84	8.5
25-44	116	11.7
45-64	217	21.9
65+	407	41.1

*Data largely based on mode. Mode is the value that appears most frequently in a given set of data. For more information visit <https://profile.id.com.au/redland>

Alexandra Hills

Employment Snapshot 2021 Census




THE LABOUR FORCE

Labour force		Participation rate	
8,876	8,826	67.9%	66.2%
ABS2016	ABS2021	ABS2016	ABS2021

Alexandra Hills' labour force declined from 8,876 in 2016 to 8,826 in 2021 and the participation rate declined by 1.7%. While the unemployment rate declined from 6.4% to 4.5% between the two Census periods, the proportion of Alexandra Hills residents working full time declined by 2.3%.

EMPLOYMENT STATUS

People who reported being in the labour force, aged 15 years and over

	2016	2021
 Worked full-time	59.4%	57.1%
 Worked part-time	29.5%	29.3%
 Unemployed	6.4%	4.5%

UNPAID WORK AND EDUCATION

Disability assistance		Volunteer	
11.7%	12.8%	16.6%	11.7%
ABS2016	ABS2021	ABS2016	ABS2021

EDUCATION ATTAINMENT

	2016	2021
Bachelor Degree and above	22.2%	25.4%
Advance Diploma and Diploma level	17%	17.9%
Vocational/Trades (Certificate I-IV)	36.9%	42.7%

Unpaid care is an important contributor to economic and community well-being. In Alexandra Hills, the percentage of residents aged 15 and over providing disability assistance rose from 11.7% to 12.8%, while volunteers declined by 4.9%.

Health Care and Social Assistance remained the top employing industry, followed by Construction and Retail Trade. The COVID-19 pandemic and the acceptance of flexible work arrangements resulted in a 8.6% increase in people working from home.

TOP 3 FIELDS OF STUDY IN 2021

	No.	% change since 2016
Management and Commerce	1,482	9.45%
Engineering and Related Technologies	1,451	0.9%
Society and Culture	987	11.45%

TYPE OF JOBS AND TRAVEL TO WORK




TOP 3 INDUSTRIES OF EMPLOYMENT IN 2021

	No.	% change since 2016
Health Care and Social Assistance	1,296	12.1%
Construction	1,057	6.1%
Retail Trade	894	-1.7%

TOP 3 OCCUPATIONS IN 2021

	No.	% change since 2016
Technicians and Trades Workers	1,466	-0.5%
Professionals	1,319	1.1%
Clerical and Administrative Workers	1,229	-1.5%

METHOD OF TRAVEL TO WORK

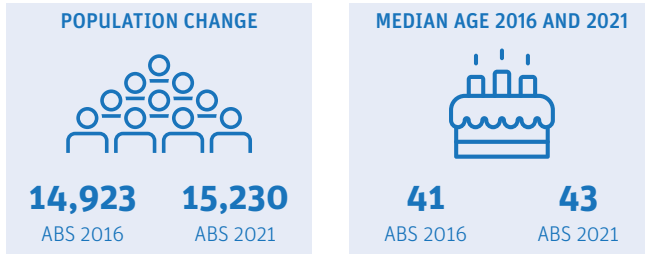
	No.	% change since 2016
 Car	5,932	-7.4%
 Public Transport	263	-3.1%
 Worked from home	1,023	8.6%

Birkdale

Demographic snapshot 2021 Census

How has Birkdale changed since the last Census (2016)

Population and age Breakdown



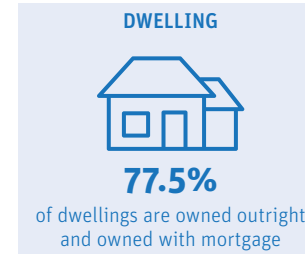
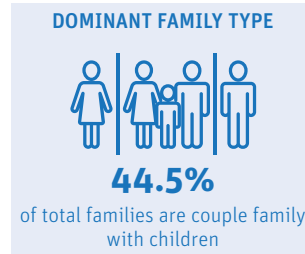
Birkdale had a population of 15,230 in 2021 which was an increase of 307 residents (or 2.1%) since 2016. Median age was 43 which was similar to Redland City. The suburb has an ageing profile with the proportion of 65 and over growing from 18% in 2016 to 21% in 2021.

AGE BREAKDOWN		
2016	AGE	2021
19.00%	0-14	18.00%
63.40%	15-64	60.60%
17.50%	65+	21.40%

Who is a typical Birkdale resident*



Family and dwelling

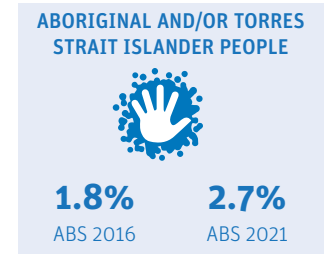
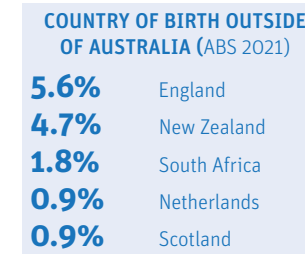


Couple family with children continued to be the dominant family type in Birkdale however the proportion had declined from 48% in 2016 to 44% in 2021. While family households continued to be the main household type, the proportion of lone household grew from 18% in 2016 to 20% in 2021.

	HOUSEHOLD COMPOSITION		
	2016	2021	Change
Family	79.40%	77.80%	▼
Single or lone person	18.30%	20.20%	▲
Group	2.40%	2.00%	▼

	MEDIANS		
	2016	2021	Change
Rent (weekly)	\$400	\$440	▲
Mortgage (monthly)	\$1989	\$2000	▲
House income (weekly)	\$1705	\$1944	▲

Characteristics



A large proportion of Birkdale residents were born in Australia (75%), and 2.7% of residents identified as Aboriginal and/or Torres Strait Islander. Almost 1 in 3 residents (32%) reported having one or more long term health conditions. More than a thousand residents (1027) reported needing assistance with core activities, with a majority (57%) of those needing assistance in the 65 and over age cohort.

LONG-TERM HEALTH CONDITION	
10.4%	Other long-term
9.9%	Mental health
9.8%	Arthritis
8.8%	Asthma
5.3%	Heart Disease

CORE ACTIVITY NEED FOR ASSISTANCE BY AGE		
AGE	NO.	%
0-14	123	12.1
15-24	62	6.1
25-44	91	9
45-64	158	15.6
65+	582	57.3

*Data largely based on mode. Mode is the value that appears most frequently in a given set of data. For more information visit <https://profile.id.com.au/redland>

Birkdale

Employment Snapshot 2021 Census




THE LABOUR FORCE

Labour force		Participation rate	
7,790	7,782	64.5%	62.3%
ABS2016	ABS2021	ABS2016	ABS2021

Birkdale's labour force declined from 7,790 in 2016 to 7,782 in 2021 and the participation rate declined by 2.2%. While the unemployment rate declined from 5.6% to 4.1% between the two Census periods, the proportion of Birkdale residents working full time declined by 2.5%.

EMPLOYMENT STATUS

People who reported being in the labour force, aged 15 years and over

	2016	2021
 Worked full-time	60.3%	57.8%
 Worked part-time	29.8%	29.4%
 Unemployed	5.6%	4.1%

UNPAID WORK AND EDUCATION

Disability assistance		Volunteer	
11.7%	13.1%	19.3%	14.2%
ABS2016	ABS2021	ABS2016	ABS2021

EDUCATION ATTAINMENT

	2016	2021
Bachelor Degree and above	27.6%	32%
Advance Diploma and Diploma level	17.4%	16.9%
Vocational/Trades (Certificate I-IV)	36.8%	36.9%

Unpaid care is an important contributor to economic and community well-being. In Birkdale, the percentage of residents aged 15 and over providing disability assistance rose from 11.7% to 13.1%, while volunteers declined by 5.1%.

Health Care and Social Assistance remained the top employing industry, followed by Construction and Retail Trade. The COVID-19 pandemic and the acceptance of flexible work arrangements resulted in a 11.4% increase in people working from home.

TOP 3 FIELDS OF STUDY IN 2021

	No.	% change since 2016
Management and Commerce	1,500	12.93%
Engineering and Related Technologies	1,354	-1.03%
Society and Culture	828	12.2%

TYPE OF JOBS AND TRAVEL TO WORK

TOP 3 INDUSTRIES OF EMPLOYMENT IN 2021

	No.	% change since 2016
Health Care and Social Assistance	1,076	14.1%
Construction	881	6.3%
Retail Trade	712	-0.3%

TOP 3 OCCUPATIONS IN 2021

	No.	% change since 2016
Professionals	1,476	2.1%
Clerical and Administrative Workers	1,160	-1.1%
Technicians and Trades Workers	1,119	-1.1%

METHOD OF TRAVEL TO WORK

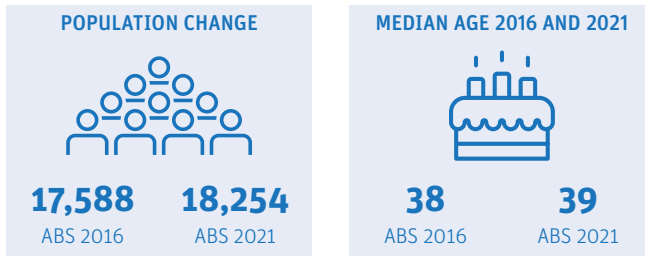
	No.	% change since 2016
 Car	4,942	-8.7%
 Public Transport	284	-4%
 Worked from home	1,216	11.4%

Capalaba

Demographic snapshot 2021 Census

How has Capalaba changed since the last Census (2016)

Population and age Breakdown



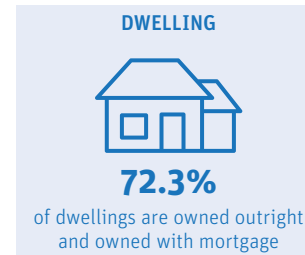
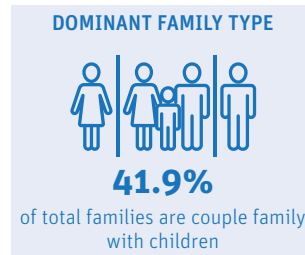
Capalaba had a relatively younger demographic with median age at 39 compared to the city's 43. The suburb had a population of 18,254, growing by 666 residents (3.8%) between 2016 and 2021. Over the past 5 years, there was decline in the proportion of 15-64 age cohort from 67% in 2016 to 64% in 2021.

AGE BREAKDOWN		
2016	AGE	2021
18.70%	0-14	18.30%
66.70%	15-64	63.90%
14.60%	65+	17.80%

Who is a typical Capalaba resident*

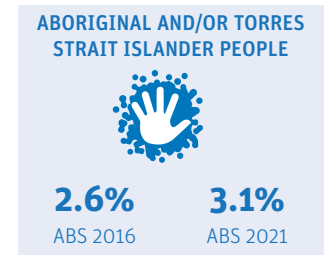
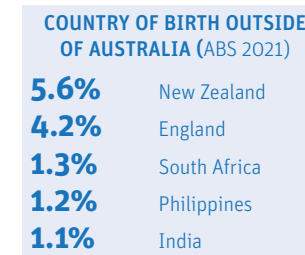


Family and dwelling



Couple family with children continued to be the dominant family type in Capalaba, however the proportion had declined from 45% in 2016 to 42% in 2021. Similar to 2016 Census, family households (73%) continued to be the main household type in 2021.

Characteristics



Majority of Capalaba residents were born in Australia (74%), and 2.7% of residents identified as Aboriginal and/or Torres Strait Islander. About 1 in 3 residents (33%) reported having one or more long term health condition. More than a thousand residents (1,183) reported needing assistance with core activities. Almost half (49%) of those needing assistance and care were older residents (65+).

	HOUSEHOLD COMPOSITION		
	2016	2021	Change
Family	74.00%	73.40%	▼
Single or lone person	22.80%	23.70%	▼
Group	3.20%	2.90%	▼

	MEDIANS		
	2016	2021	Change
Rent (weekly)	\$350	\$383	▲
Mortgage (monthly)	\$1848	\$1785	▼
House income (weekly)	\$1474	\$1738	▲

LONG-TERM HEALTH CONDITION	
11.2%	Mental health
10.2%	Other long-term
10%	Asthma
9.9%	Arthritis
5.5%	Diabetes

CORE ACTIVITY NEED FOR ASSISTANCE BY AGE		
AGE	NO.	%
0-14	165	14
15-24	90	7.6
25-44	130	11
45-64	220	18.7
65+	574	48.7

*Data largely based on mode. Mode is the value that appears most frequently in a given set of data. For more information visit <https://profile.id.com.au/redland>

Capalaba

Employment Snapshot 2021 Census




THE LABOUR FORCE

Labour force		Participation rate	
9,628	9,664	67.4%	64.8%
ABS2016	ABS2021	ABS2016	ABS2021

Capalaba's labour force increased from 9,628 in 2016 to 9,664 in 2021 and the participation rate declined by 2.6%. While the unemployment rate declined from 6.6% to 4.4% between the two Census periods, the proportion of Capalaba residents working full time declined by 2.0%.

EMPLOYMENT STATUS

People who reported being in the labour force, aged 15 years and over

	2016	2021
 Worked full-time	59.1%	57.1%
 Worked part-time	29.7%	30%
 Unemployed	6.6%	4.4%

UNPAID WORK AND EDUCATION

Disability assistance		Volunteer	
12%	12.7%	16.8%	12.3%
ABS2016	ABS2021	ABS2016	ABS2021

EDUCATION ATTAINMENT

	2016	2021
Bachelor Degree and above	24.9%	27.3%
Advance Diploma and Diploma level	16.2%	17.1%
Vocational/Trades (Certificate I-IV)	43.6%	41.8%

Unpaid care is an important contributor to economic and community well-being. In Capalaba, the percentage of residents aged 15 and over providing disability assistance rose from 12.0% to 12.7%, while volunteers declined by 4.5%.

Health Care and Social Assistance remained the top employing industry, followed by Construction and Retail Trade. The COVID-19 pandemic and the acceptance of flexible work arrangements resulted in a 9.1% increase in people working from home.

TOP 3 FIELDS OF STUDY IN 2021

	No.	% change since 2016
Management and Commerce	1,760	8.52%
Engineering and Related Technologies	1,624	-1.11%
Society and Culture	1,031	16.88%

TYPE OF JOBS AND TRAVEL TO WORK

TOP 3 INDUSTRIES OF EMPLOYMENT IN 2021

	No.	% change since 2016
Health Care and Social Assistance	1,379	23%
Construction	1,103	10.6%
Retail Trade	989	-1.8%

TOP 3 OCCUPATIONS IN 2021

	No.	% change since 2016
Technicians and Trades Workers	1,566	-0.6%
Professionals	1,539	1.8%
Clerical and Administrative Workers	1,425	-1%

METHOD OF TRAVEL TO WORK

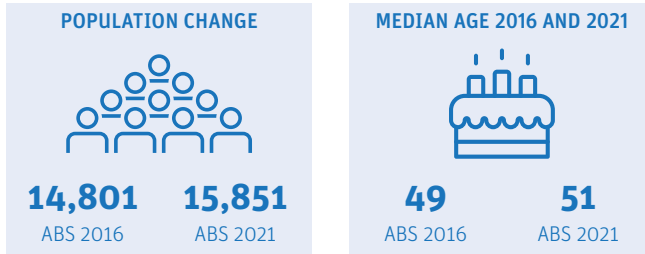
	No.	% change since 2016
 Car	6,434	-7.1%
 Public Transport	297	-2.7%
 Worked from home	1,205	9.1%

Cleveland

Demographic snapshot 2021 Census

How has Cleveland changed since the last Census (2016)

Population and age Breakdown



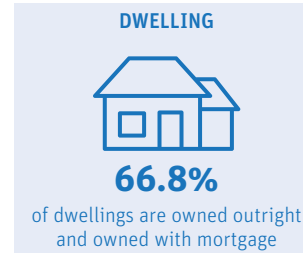
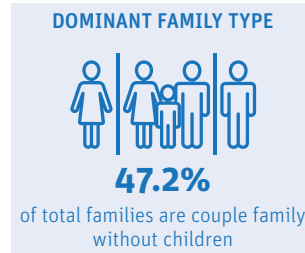
Cleveland had a population of 15,851 in 2021, 1,050 more residents compared to the previous Census. The suburb had a relatively older demographic with median age at 51, nine (9) years more than the Redland City's median age of 43. Cleveland has an ageing profile with the proportion of 65 and over growing from 26% in 2016 to 30% in 2021.

AGE BREAKDOWN		
2016	AGE	2021
14.20%	0-14	13.20%
60.00%	15-64	56.50%
25.80%	65+	30.30%

Who is a typical Cleveland resident*

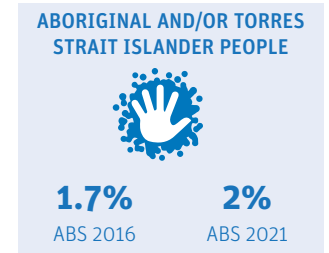
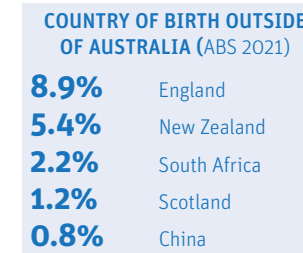


Family and dwelling



Couple family without children continued to be the dominant family type in Cleveland, with the proportion growing from 45% in 2016 to 47% in 2021. Similar to 2016 Census, family households (67%) continued to be the main household type in 2021.

Characteristics



A large proportion of Cleveland residents were born in Australia (67%), and 2% of residents identified as Aboriginal and/or Torres Strait Islander. 36% of residents reported having one or more long term health conditions. More than a thousand residents (1,345 or 9% of total population) reported requiring assistance with core activities due to a disability, 67% of those were in the 65 and over age cohort.

	HOUSEHOLD COMPOSITION		
	2016	2021	Change
Family	67.30%	66.90%	▼
Single or lone person	30.10%	31.00%	▲
Group	2.60%	2.10%	▼

	MEDIANS		
	2016	2021	Change
Rent (weekly)	\$375	\$400	▲
Mortgage (monthly)	\$1950	\$2000	▲
House income (weekly)	\$1275	\$1430	▲

LONG-TERM HEALTH CONDITION	
13.6%	Arthritis
10.6%	Other long-term
10.5%	Mental health
8.6%	Asthma
7.2%	Heart Disease

CORE ACTIVITY NEED FOR ASSISTANCE BY AGE		
AGE	NO.	%
0-14	109	8.1
15-24	46	3.4
25-44	108	8
45-64	177	13.2
65+	905	67.3

*Data largely based on mode. Mode is the value that appears most frequently in a given set of data. For more information visit <https://profile.id.com.au/redland>

Cleveland

Employment Snapshot 2021 Census




THE LABOUR FORCE

Labour force		Participation rate	
7,014	7,319	55.2%	53.2%
ABS2016	ABS2021	ABS2016	ABS2021

Cleveland's labour force increased from 7,014 in 2016 to 7,319 in 2021 and the participation rate declined by 2.0%. While the unemployment rate declined from 6.6% to 4.7% between the two Census periods, the proportion of Cleveland residents working full time declined by 2.9%.

EMPLOYMENT STATUS

People who reported being in the labour force, aged 15 years and over

	2016	2021
 Worked full-time	57.9%	55%
 Worked part-time	31.7%	32%
 Unemployed	6%	4.7%

UNPAID WORK AND EDUCATION

Disability assistance		Volunteer	
11.6%	11.8%	18.7%	14.2%
ABS2016	ABS2021	ABS2016	ABS2021

EDUCATION ATTAINMENT

	2016	2021
Bachelor Degree and above	28.5%	31.6%
Advance Diploma and Diploma level	17.4%	18.7%
Vocational/Trades (Certificate I-IV)	32.7%	32.5%

Unpaid care is an important contributor to economic and community well-being. In Cleveland, the percentage of residents aged 15 and over providing disability assistance rose from 11.6% to 11.8%, while volunteers declined by 4.5%.

Health Care and Social Assistance remained the top employing industry, followed by Construction and Retail Trade. The COVID-19 pandemic and the acceptance of flexible work arrangements resulted in a 10% increase in people working from home.

TOP 3 FIELDS OF STUDY IN 2021

	No.	% change since 2016
Management and Commerce	1,755	17.89%
Engineering and Related Technologies	1,352	4.07%
Society and Culture	922	15.4%

TYPE OF JOBS AND TRAVEL TO WORK




TOP 3 INDUSTRIES OF EMPLOYMENT IN 2021

	No.	% change since 2016
Health Care and Social Assistance	1,069	26.5%
Construction	808	4.1%
Retail Trade	652	3%

TOP 3 OCCUPATIONS IN 2021

	No.	% change since 2016
Professionals	1,368	0.6%
Clerical and Administrative Workers	1,099	0.5%
Managers	1,055	-0.5%

METHOD OF TRAVEL TO WORK

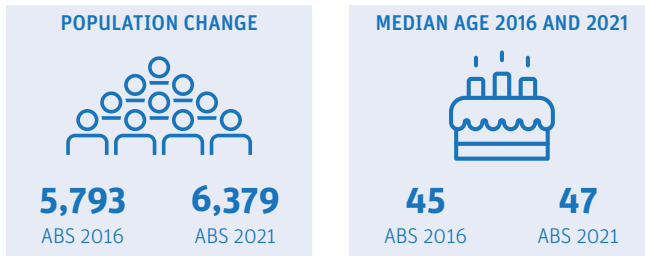
	No.	% change since 2016
 Car	4,595	-6.7%
 Public Transport	253	-2.9%
 Worked from home	1,108	10%

Ormiston

Demographic snapshot 2021 Census

How has Ormiston changed since the last Census (2016)

Population and age Breakdown



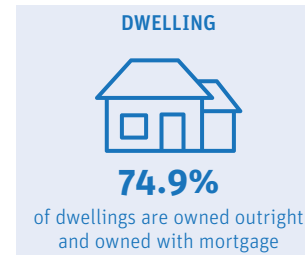
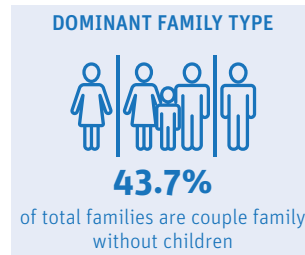
Ormiston had a population of 6,379 in 2021, a 10% growth when compared to the previous Census. The suburb had a slightly older demographic with median age at 47, compared to Redland City's median age of 43. Over the past 5 years, the proportion of 65 and over grew from 21% in 2016 to 24% in 2021.

AGE BREAKDOWN		
2016	AGE	2021
17.00%	0-14	16.50%
61.60%	15-64	59.10%
21.40%	65+	24.40%

Who is a typical Ormiston resident*

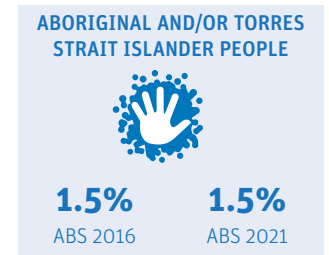
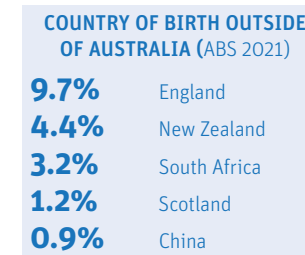


Family and dwelling



Couple family without children (44%) was the dominant family type in Ormiston in 2021. This is a shift from the previous Census where couple family with children was the dominant family type. Family households (77%) continued to be the main household type in 2021.

Characteristics



A large proportion of Ormiston residents were born in Australia (68%), and 1.5% of residents identified as Aboriginal and/or Torres Strait Islander. Almost 1 in 3 residents (32%) reported having one or more long term health conditions. About 6% (or 370) of residents reported needing assistance with core activities, with a majority (62%) of those needing assistance in the 65 and over age cohort.

	HOUSEHOLD COMPOSITION		
	2016	2021	Change
Family	75.80%	77.20%	▲
Single or lone person	22.30%	21.30%	▼
Group	1.90%	1.40%	▼

	MEDIANS		
	2016	2021	Change
Rent (weekly)	\$420	\$450	▲
Mortgage (monthly)	\$2000	\$2000	NC
House income (weekly)	\$1597	\$1913	▲

LONG-TERM HEALTH CONDITION	
10.9%	Arthritis
9.5%	Other long-term
9.1%	Asthma
8.2%	Mental health
5.6%	Heart Disease

CORE ACTIVITY NEED FOR ASSISTANCE BY AGE		
AGE	NO.	%
0-14	48	13
15-24	14	3.8
25-44	24	6.5
45-64	54	14.7
65+	228	62

*Data largely based on mode. Mode is the value that appears most frequently in a given set of data. For more information visit <https://profile.id.com.au/redland>

Ormiston

Employment Snapshot 2021 Census




THE LABOUR FORCE

Labour force		Participation rate	
2,922	3,219	60.8%	60.4%
ABS2016	ABS2021	ABS2016	ABS2021

Ormiston's labour force increased from 2,922 in 2016 to 3,219 in 2021 and the participation rate declined by 0.4%. While the unemployment rate declined from 5.2% to 3.9% between the two Census periods, the proportion of Ormiston residents working full time declined by 2.5%.

EMPLOYMENT STATUS

People who reported being in the labour force, aged 15 years and over

	2016	2021
 Worked full-time	58.7%	56.2%
 Worked part-time	31.7%	31.3%
 Unemployed	5.2%	3.9%

UNPAID WORK AND EDUCATION

Disability assistance		Volunteer	
11.7%	13.4%	21.9%	16.2%
ABS2016	ABS2021	ABS2016	ABS2021

EDUCATION ATTAINMENT

	2016	2021
Bachelor Degree and above	37.5%	42%
Advance Diploma and Diploma level	19.1%	19.3%
Vocational/Trades (Certificate I-IV)	28.1%	26.7%

Unpaid care is an important contributor to economic and community well-being. In Ormiston, the percentage of residents aged 15 and over providing disability assistance rose from 11.7% to 13.4%, while volunteers declined by 5.7%.

Health Care and Social Assistance remained the top employing industry, followed by Retail Trade and Education and Training. The COVID-19 pandemic and the acceptance of flexible work arrangements resulted in a 13.7% increase in people working from home.

TOP 3 FIELDS OF STUDY IN 2021

	No.	% change since 2016
Management and Commerce	800	18.25%
Engineering and Related Technologies	539	7.79%
Health	392	7.91%

TYPE OF JOBS AND TRAVEL TO WORK




TOP 3 INDUSTRIES OF EMPLOYMENT IN 2021

	No.	% change since 2016
Health Care and Social Assistance	467	27.6%
Retail Trade	314	14.2%
Education and Training	291	15%

TOP 3 OCCUPATIONS IN 2021

	No.	% change since 2016
Professionals	768	0.8%
Managers	537	1.6%
Clerical and Administrative Workers	473	-0.4%

METHOD OF TRAVEL TO WORK

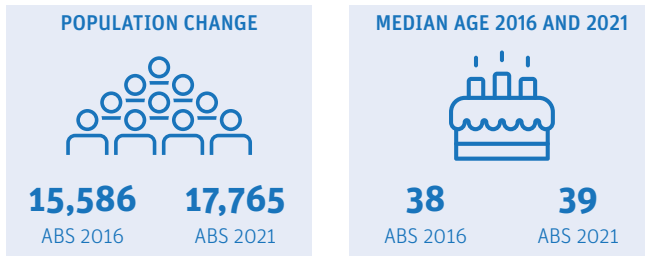
	No.	% change since 2016
 Car	1,923	-8.8%
 Public Transport	125	-5%
 Worked from home	635	13.7%

Redland Bay

Demographic snapshot 2021 Census

How has Redland Bay changed since the last Census (2016)

Population and age Breakdown



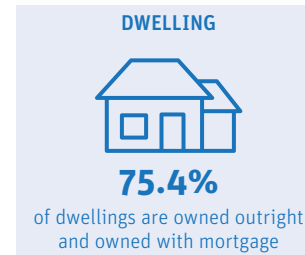
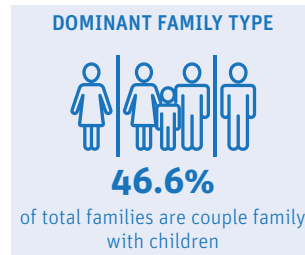
Redland Bay is one of Redland City's fastest growing suburbs. It had a population of 17,765 in 2021, a 14% growth compared to the previous Census. The suburb had an annual average growth of almost 3% which is almost double that of Redland city's annual growth rate. Median age was at 39.

AGE BREAKDOWN		
2016	AGE	2021
22.10%	0-14	20.40%
63.50%	15-64	63.00%
14.50%	65+	16.60%

Who is a typical Redland Bay resident*



Family and dwelling

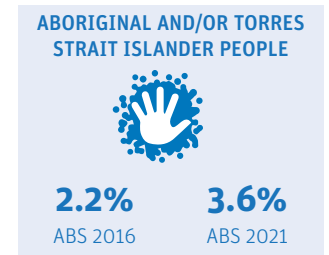
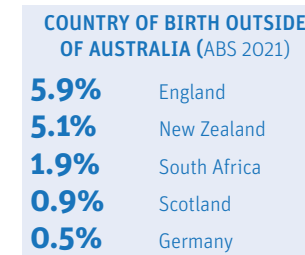


Similar to previous Census period, couple family with children (47%) continued to be the dominant family type in Redland Bay in 2021. Family households (84%) also continued to be the main household type in 2021.

	HOUSEHOLD COMPOSITION		
	2016	2021	Change
Family	84.40%	84.30%	▼
Single or lone person	13.30%	13.70%	▲
Group	2.30%	2.00%	▼

	MEDIANS		
	2016	2021	Change
Rent (weekly)	\$450	\$470	▲
Mortgage (monthly)	\$2167	\$2076	▼
House income (weekly)	\$1754	\$2074	▲

Characteristics



Majority of Redland Bay residents were born in Australia (77%), and 3.6% of residents identified as Aboriginal and/or Torres Strait Islander. 31% of residents reported having one or more long term health conditions. 996 residents (or 6% of total population) reported needing assistance with core activities. Almost 1 in 5 of those needing assistance and care were in the 0-14 age group.

LONG-TERM HEALTH CONDITION	
9.8%	Asthma
9.5%	Mental health
9.3%	Arthritis
8.9%	Other long-term
4.2%	Diabetes

CORE ACTIVITY NEED FOR ASSISTANCE BY AGE		
AGE	NO.	%
0-14	185	18.6
15-24	102	10.2
25-44	105	10.5
45-64	186	18.7
65+	420	42.2

*Data largely based on mode. Mode is the value that appears most frequently in a given set of data. For more information visit <https://profile.id.com.au/redland>

Redland Bay

Employment Snapshot 2021 Census




THE LABOUR FORCE

Labour force		Participation rate	
7,911	9,267	65.1%	65.5%
ABS2016	ABS2021	ABS2016	ABS2021

Redland Bay's labour force increased from 7,911 in 2016 to 9,267 in 2021 and the participation rate increased by 0.4%. While the unemployment rate declined from 5.9% to 4.0% between the two Census periods, the proportion of Redland Bay residents working full time declined by 1.1%.

EMPLOYMENT STATUS

People who reported being in the labour force, aged 15 years and over

	2016	2021
 Worked full-time	59.1%	58%
 Worked part-time	30%	29.3%
 Unemployed	5.9%	4%

UNPAID WORK AND EDUCATION

Disability assistance		Volunteer	
11.2%	12.2%	15.7%	11.4%
ABS2016	ABS2021	ABS2016	ABS2021

EDUCATION ATTAINMENT

	2016	2021
Bachelor Degree and above	22.2%	25.7%
Advance Diploma and Diploma level	17.2%	18.4%
Vocational/Trades (Certificate I-IV)	42.4%	43%

Unpaid care is an important contributor to economic and community well-being. In Redland Bay, the percentage of residents aged 15 and over providing disability assistance rose from 11.2% to 12.2%, while volunteers declined by 4.3%.

Construction remained the top employing industry, followed by Health Care and Social Assistance and Retail Trade. The COVID-19 pandemic and the acceptance of flexible work arrangements resulted in a 8.6% increase in people working from home.

TOP 3 FIELDS OF STUDY IN 2021

	No.	% change since 2016
Management and Commerce	1,707	23.2%
Engineering and Related Technologies	1,562	17.73%
Society and Culture	1,027	29.31%

TYPE OF JOBS AND TRAVEL TO WORK

TOP 3 INDUSTRIES OF EMPLOYMENT IN 2021

	No.	% change since 2016
Construction	1,324	24.2%
Health Care and Social Assistance	1,217	40.9%
Retail Trade	862	12.4%

TOP 3 OCCUPATIONS IN 2021

	No.	% change since 2016
Technicians and Trades Workers	1,514	0.7%
Professionals	1,434	0.6%
Clerical and Administrative Workers	1,381	-0.6%

METHOD OF TRAVEL TO WORK

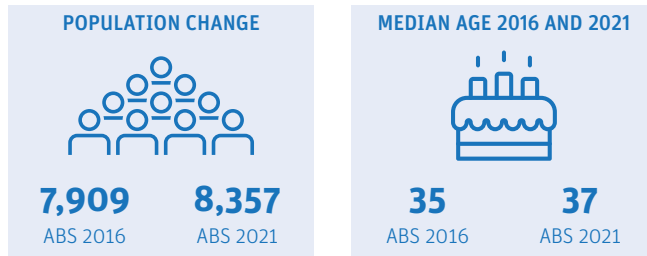
	No.	% change since 2016
 Car	6,216	-8.8%
 Public Transport	211	-2%
 Worked from home	1,244	8.6%

Sheldon - Mount Cotton

Demographic snapshot 2021 Census

How has Sheldon - Mount Cotton changed since the last Census (2016)

Population and age Breakdown

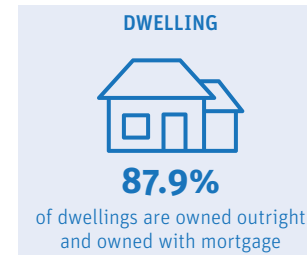
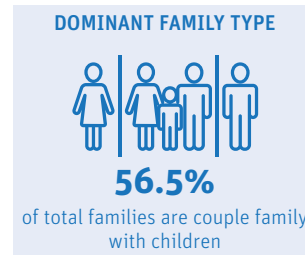


Sheldon-Mount Cotton had a population of 8,357 in 2021, a modest increase of 448 residents since the previous Census period. The suburb had a relatively younger demographic with median age at 37 compared to the Redland City's median age of 43.

Who is a typical Sheldon - Mount Cotton resident*

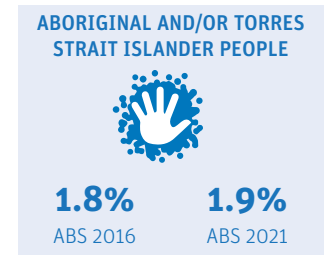
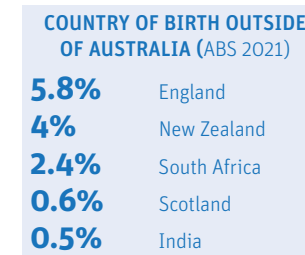


Family and dwelling



Similar to previous Census period, couple family with children (56%) continued to be the dominant family type in Sheldon-Mount Cotton in 2021. Family households (90%) also continued to be the main household type in 2021.

Characteristics



A large proportion of Sheldon-Mount Cotton residents were born in Australia (79%), and 2% of residents identified as Aboriginal and/or Torres Strait Islander. About 1 in 4 residents (or 26%) reported having one or more long term health conditions. 328 residents (or 4% of total population) needed assistance with core activities, with 38% of those in the 65 and up age category.

AGE BREAKDOWN		
2016	AGE	2021
24.60%	0-14	23.10%
66.50%	15-64	65.90%
8.90%	65+	10.90%

	HOUSEHOLD COMPOSITION		
	2016	2021	Change
Family	89.10%	89.80%	▲
Single or lone person	9.00%	9.00%	NC
Group	1.80%	1.20%	▼

	MEDIANS		
	2016	2021	Change
Rent (weekly)	\$460	\$475	▲
Mortgage (monthly)	\$2167	\$2167	NC
House income (weekly)	\$2210	\$2637	▲

LONG-TERM HEALTH CONDITION	
9%	Other long-term
9%	Mental health
8.5%	Asthma
6.5%	Arthritis
3.3%	Diabetes

CORE ACTIVITY NEED FOR ASSISTANCE BY AGE		
AGE	NO.	%
0-14	80	24.4
15-24	36	11
25-44	33	10.1
45-64	62	18.9
65+	124	37.8

*Data largely based on mode. Mode is the value that appears most frequently in a given set of data. For more information visit <https://profile.id.com.au/redland>

Sheldon - Mount Cotton

Employment Snapshot 2021 Census




THE LABOUR FORCE

Labour force		Participation rate	
4,487	4,803	75.3%	74.8%
ABS2016	ABS2021	ABS2016	ABS2021

Sheldon-Mount Cotton's labour force increased from 4,487 in 2016 to 4,803 in 2021 and the participation rate decreased by 0.5%. While the unemployment rate declined from 4.6% to 3.0% between the two Census periods, the proportion of Sheldon-Mount Cotton residents working full time declined by 3.8%.

EMPLOYMENT STATUS

People who reported being in the labour force, aged 15 years and over

	2016	2021
 Worked full-time	63.6%	59.8%
 Worked part-time	27.7%	28.9%
 Unemployed	4.6%	3%

UNPAID WORK AND EDUCATION

Disability assistance		Volunteer	
10.5%	12.6%	18%	14.3%
ABS2016	ABS2021	ABS2016	ABS2021

EDUCATION ATTAINMENT

	2016	2021
Bachelor Degree and above	31.5%	33.1%
Advance Diploma and Diploma level	18.2%	19.6%
Vocational/Trades (Certificate I-IV)	38.5%	38%

Unpaid care is an important contributor to economic and community well-being. In Sheldon-Mount Cotton, the percentage of residents aged 15 and over providing disability assistance rose from 10.5% to 12.6%, while volunteers declined by 3.7%.

Construction remained the top employing industry, followed by Health Care and Social Assistance and Education and Training. The COVID-19 pandemic and the acceptance of flexible work arrangements resulted in a 12.1% increase in people working from home.

TOP 3 FIELDS OF STUDY IN 2021

	No.	% change since 2016
Management and Commerce	825	14.06%
Engineering and Related Technologies	814	6.88%
Society and Culture	475	8.42%

TYPE OF JOBS AND TRAVEL TO WORK




TOP 3 INDUSTRIES OF EMPLOYMENT IN 2021

	No.	% change since 2016
Construction	666	17.5%
Health Care and Social Assistance	580	18.4%
Education and Training	498	15%

TOP 3 OCCUPATIONS IN 2021

	No.	% change since 2016
Professionals	965	0.8%
Technicians and Trades Workers	776	0.2%
Managers	739	1%

METHOD OF TRAVEL TO WORK

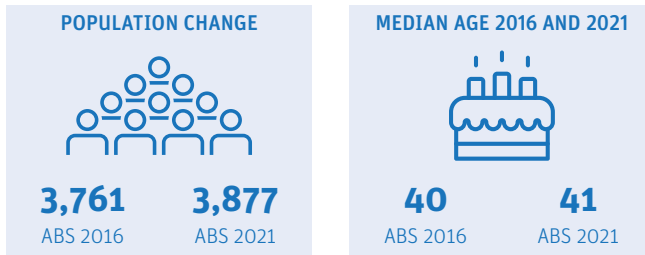
	No.	% change since 2016
 Car	3,094	-11.5%
 Public Transport	86	-2.7%
 Worked from home	831	12.1%

Thorneside

Demographic snapshot 2021 Census

How has Thorneside changed since the last Census (2016)

Population and age Breakdown

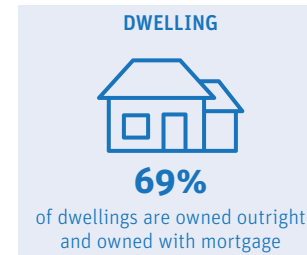
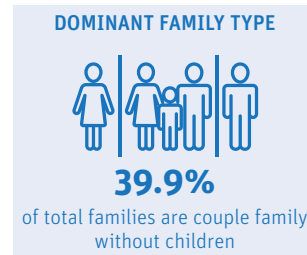


Thorneside had a population of 3,877 in 2021 and experienced a modest growth of 116 residents since the previous Census period. The median age in the suburb was 41, slightly lower than Redland City's median age of 43.

Who is a typical Thorneside resident*

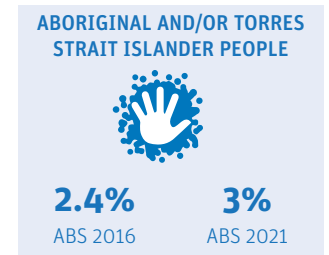
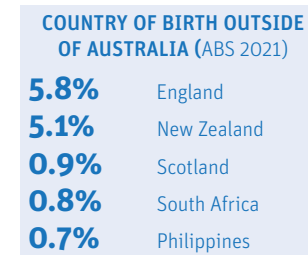


Family and dwelling



Couple family without children (40%) continued to be the dominant family type in Thorneside. Family households (67%) also continued to be the main household type in 2021.

Characteristics



Majority of residents were born in Australia (76%), and 3% of residents identified as Aboriginal and/or Torres Strait Islander. About 1 in 3 residents (33%) reported having one or more long term health conditions. 186 residents reported requiring assistance with core activities due to a disability. About 39% of residents who reported the need for assistance were older people (65+).

AGE BREAKDOWN		
2016	AGE	2021
18.10%	0-14	19.40%
65.80%	15-64	61.50%
16.10%	65+	19.10%

	HOUSEHOLD COMPOSITION		
	2016	2021	Change
Family	67.40%	67.10%	▼
Single or lone person	29.20%	29.70%	▲
Group	3.40%	3.20%	▼

	MEDIANS		
	2016	2021	Change
Rent (weekly)	\$355	\$370	▲
Mortgage (monthly)	\$1777	\$1787	▲
House income (weekly)	\$1299	\$1488	▲

LONG-TERM HEALTH CONDITION	
11.6%	Mental health
10%	Asthma
10%	Arthritis
9.5%	Other long-term
5%	Diabetes

CORE ACTIVITY NEED FOR ASSISTANCE BY AGE		
AGE	NO.	%
0-14	24	12.9
15-24	18	9.7
25-44	20	10.7
45-64	41	22
65+	72	38.7

*Data largely based on mode. Mode is the value that appears most frequently in a given set of data. For more information visit <https://profile.id.com.au/redland>

Thorneside

Employment Snapshot 2021 Census




THE LABOUR FORCE

Labour force		Participation rate	
1,964	2,007	63.9%	64.1%
ABS2016	ABS2021	ABS2016	ABS2021

Thorneside's labour force increased from 1,964 in 2016 to 2,007 in 2021 and the participation rate increased by 0.2%. While the unemployment rate declined from 6.6% to 5.5% between the two Census periods, the proportion of Thorneside residents working full time declined by 0.8%.

EMPLOYMENT STATUS

People who reported being in the labour force, aged 15 years and over

	2016	2021
 Worked full-time	59%	58.2%
 Worked part-time	28.7%	27.7%
 Unemployed	6.6%	5.5%

UNPAID WORK AND EDUCATION

Disability assistance		Volunteer	
11.8%	11.2%	16.5%	14.2%
ABS2016	ABS2021	ABS2016	ABS2021

EDUCATION ATTAINMENT

	2016	2021
Bachelor Degree and above	26.5%	31.7%
Advance Diploma and Diploma level	17.9%	16.9%
Vocational/Trades (Certificate I-IV)	38.4%	37.9%

Unpaid care is an important contributor to economic and community well-being. In Thorneside, the percentage of residents aged 15 and over providing disability assistance decreased from 11.8% to 11.2%, while volunteers declined by 2.3%.

Health Care and Social Assistance remained the top employing industry, followed by Construction and Education and Training. The COVID-19 pandemic and the acceptance of flexible work arrangements resulted in a 10.9% increase in people working from home.

TOP 3 FIELDS OF STUDY IN 2021

	No.	% change since 2016
Management and Commerce	401	16.46%
Engineering and Related Technologies	327	1.22%
Society and Culture	214	-5.14%

TYPE OF JOBS AND TRAVEL TO WORK



TOP 3 INDUSTRIES OF EMPLOYMENT IN 2021

	No.	% change since 2016
Health Care and Social Assistance	279	20.3%
Construction	221	15.1%
Education and Training	173	7.5%

TOP 3 OCCUPATIONS IN 2021

	No.	% change since 2016
Professionals	379	2%
Technicians and Trades Workers	298	0.1%
Clerical and Administrative Workers	279	-2%

METHOD OF TRAVEL TO WORK

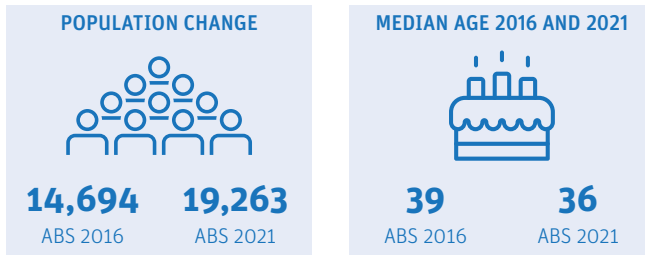
	No.	% change since 2016
 Car	1,240	-6.7%
 Public Transport	115	-4.2%
 Worked from home	284	10.9%

Thornlands

Demographic snapshot 2021 Census

How has Thornlands changed since the last Census (2016)

Population and age Breakdown

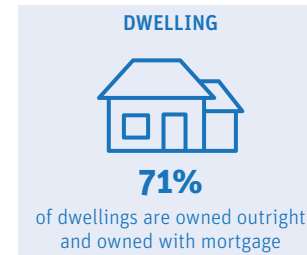
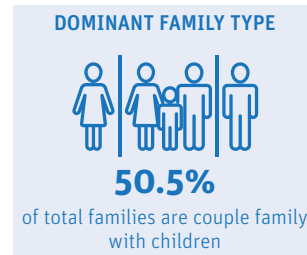


Thornlands had a population of 19,263 in 2021, a 31% growth compared to the previous Census. The suburb had an average annual growth rate of 6% which was almost four times that of Redland City's average annual growth rate. Median age was at 36.

Who is a typical Thornlands resident*

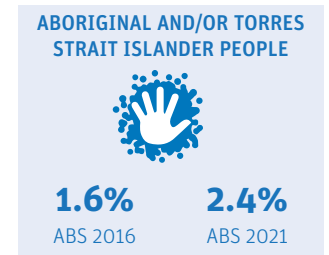
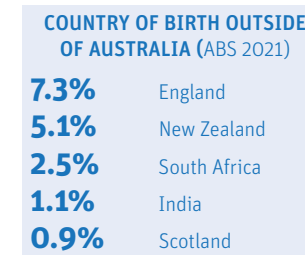


Family and dwelling



Couple family with children (50%) continued to be the dominant family type in Thornlands. Family households (84%) also continued to be the main household type in 2021.

Characteristics



Majority of residents were born in Australia (72%), and 2.4% of residents identified as Aboriginal and/or Torres Strait Islander. More than 1 in 4 residents (27%) reported having one or more long term health conditions. Almost a thousand residents (973) reported requiring assistance with core activities due to a disability. More than half (53%) of residents who reported the need for assistance were older people (65+).

AGE BREAKDOWN		
2016	AGE	2021
20.90%	0-14	21.50%
65.00%	15-64	64.60%
14.10%	65+	14.00%

	HOUSEHOLD COMPOSITION		
	2016	2021	Change
Family	85.10%	84.20%	▼
Single or lone person	13.10%	13.90%	▲
Group	1.80%	1.90%	▲

	MEDIANS		
	2016	2021	Change
Rent (weekly)	\$450	\$470	▲
Mortgage (monthly)	\$2167	\$2167	NC
House income (weekly)	\$1936	\$2218	▲

LONG-TERM HEALTH CONDITION	
8.9%	Mental health
8.7%	Asthma
8.6%	Other long-term
7.6%	Arthritis
3.6%	Diabetes

CORE ACTIVITY NEED FOR ASSISTANCE BY AGE		
AGE	NO.	%
0-14	176	18.1
15-24	67	6.9
25-44	85	8.7
45-64	177	18.2
65+	520	53.4

*Data largely based on mode. Mode is the value that appears most frequently in a given set of data. For more information visit <https://profile.id.com.au/redland>

Thornlands

Employment Snapshot 2021 Census

THE LABOUR FORCE

Labour force		Participation rate	
7,924	10,632	68.2%	70.3%
ABS2016	ABS2021	ABS2016	ABS2021

Thornlands's labour force increased from 7,924 in 2016 to 10,632 in 2021 and the participation rate increased by 2.1%. While the unemployment rate declined from 5.2% to 3.7% between the two Census periods, the proportion of Thornlands residents working full time declined by 3.0%.

EMPLOYMENT STATUS

People who reported being in the labour force, aged 15 years and over

	2016	2021
Worked full-time	60.9%	57.9%
Worked part-time	30.3%	29.8%
Unemployed	5.2%	3.7%

UNPAID WORK AND EDUCATION

Disability assistance		Volunteer	
11.2%	11.7%	19.1%	12.5%
ABS2016	ABS2021	ABS2016	ABS2021

EDUCATION ATTAINMENT

	2016	2021
Bachelor Degree and above	28.1%	31.4%
Advance Diploma and Diploma level	19.9%	19.8%
Vocational/Trades (Certificate I-IV)	37.1%	37.5%

Unpaid care is an important contributor to economic and community well-being. In Thornlands, the percentage of residents aged 15 and over providing disability assistance rose from 11.2% to 11.7%, while volunteers declined by 6.6%.

Health Care and Social Assistance remained the top employing industry, followed by Construction and Retail Trade. The COVID-19 pandemic and the acceptance of flexible work arrangements resulted in a 10% increase in people working from home.

TOP 3 FIELDS OF STUDY IN 2021

	No.	% change since 2016
Management and Commerce	2,069	29.19%
Engineering and Related Technologies	1,629	21.18%
Society and Culture	1,130	39.65%

TYPE OF JOBS AND TRAVEL TO WORK

TOP 3 INDUSTRIES OF EMPLOYMENT IN 2021

	No.	% change since 2016
Health Care and Social Assistance	1,563	69.5%
Construction	1,272	38.4%
Retail Trade	1,025	30.2%

TOP 3 OCCUPATIONS IN 2021

	No.	% change since 2016
Professionals	1,954	0.9%
Clerical and Administrative Workers	1,572	-1.5%
Technicians and Trades Workers	1,560	-0.5%

METHOD OF TRAVEL TO WORK

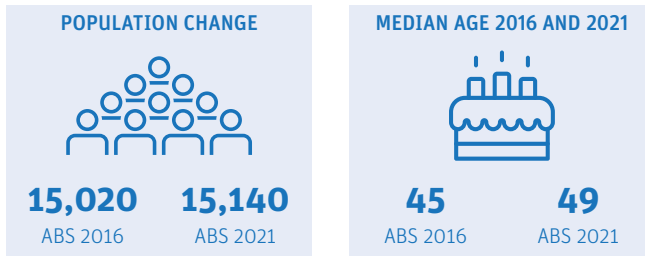
	No.	% change since 2016
Car	7,088	-7.7%
Public Transport	272	-2.9%
Worked from home	1,564	10%

Victoria Point

Demographic snapshot 2021 Census

How has Victoria Point changed since the last Census (2016)

Population and age Breakdown



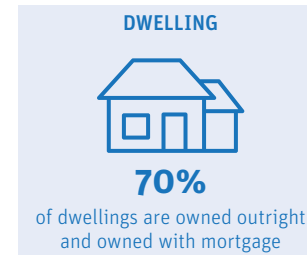
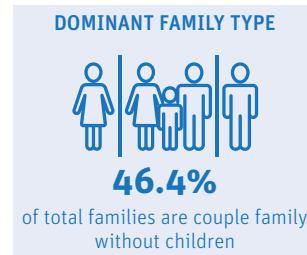
Victoria Point had a population of 15,140 in 2021 and experienced a modest growth of 120 residents since the previous Census period. The median age in the suburb was 49, which was higher than Redland City's median age of 43. The proportion of 65 and over grew from 25% in 2016 to 29% in 2021.

AGE BREAKDOWN		
2016	AGE	2021
17.30%	0-14	15.30%
58.10%	15-64	56.20%
24.60%	65+	28.50%

Who is a typical Victoria Point resident*



Family and dwelling

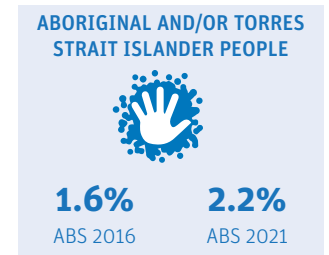
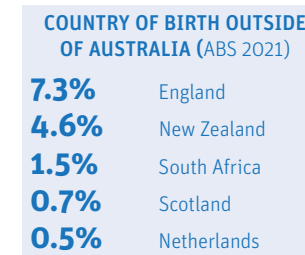


Similar to the previous Census period, Couple family without children (46%) continued to be the dominant family type in Victoria Point. Family households (73%) also continued to be the main household type in 2021.

	HOUSEHOLD COMPOSITION		
	2016	2021	Change
Family	76.10%	73.40%	▼
Single or lone person	21.70%	24.60%	▲
Group	2.00%	2.00%	NC

	MEDIAN		
	2016	2021	Change
Rent (weekly)	\$420	\$450	▲
Mortgage (monthly)	\$1950	\$1950	NC
House income (weekly)	\$1387	\$1511	▲

Characteristics



A large proportion of residents were born in Australia (75%), and 2.2% of residents identified as Aboriginal and/or Torres Strait Islander. More than 1 in 3 residents (37%) reported having one or more long term health conditions. More than a thousand residents (1,077) reported requiring assistance with core activities due to a disability. More than half (65%) of residents who reported the need for assistance were older people (65+).

LONG-TERM HEALTH CONDITION	
13.4%	Arthritis
11.1%	Other long-term
10.6%	Mental health
9.3%	Asthma
7.2%	Heart disease

CORE ACTIVITY NEED FOR ASSISTANCE BY AGE		
AGE	NO.	%
0-14	137	10.4
15-24	67	5.1
25-44	85	6.4
45-64	177	13.4
65+	863	65.3

*Data largely based on mode. Mode is the value that appears most frequently in a given set of data. For more information visit <https://profile.id.com.au/redland>

Victoria Point

Employment Snapshot 2021 Census




THE LABOUR FORCE

Labour force		Participation rate	
7,025	7,050	56.6%	54.9%
ABS2016	ABS2021	ABS2016	ABS2021

Victoria Point's labour force increased from 7,025 in 2016 to 7,050 in 2021 and the participation rate declined by 1.7%. While the unemployment rate declined from 5.8% to 4.4% between the two Census periods, the proportion of Victoria Point residents working full time declined by 3.3%.

EMPLOYMENT STATUS

People who reported being in the labour force, aged 15 years and over

	2016	2021
 Worked full-time	58.1%	54.8%
 Worked part-time	31.8%	31.2%
 Unemployed	5.8%	4.4%

UNPAID WORK AND EDUCATION

Disability assistance		Volunteer	
11.9%	13.2%	17.9%	13.3%
ABS2016	ABS2021	ABS2016	ABS2021

EDUCATION ATTAINMENT

	2016	2021
Bachelor Degree and above	22.6%	26.2%
Advance Diploma and Diploma level	17.5%	18.7%
Vocational/Trades (Certificate I-IV)	40.4%	40.1%

Unpaid care is an important contributor to economic and community well-being. In Victoria Point, the percentage of residents aged 15 and over providing disability assistance rose from 11.9% to 13.2%, while volunteers declined by 4.6%.

Health Care and Social Assistance remained the top employing industry, followed by Construction and Retail Trade. The COVID-19 pandemic and the acceptance of flexible work arrangements resulted in a 8.6% increase in people working from home.

TOP 3 FIELDS OF STUDY IN 2021

	No.	% change since 2016
Management and Commerce	1,399	3.15%
Engineering and Related Technologies	1,365	11.14%
Society and Culture	869	15.3%

TYPE OF JOBS AND TRAVEL TO WORK

TOP 3 INDUSTRIES OF EMPLOYMENT IN 2021

	No.	% change since 2016
Health Care and Social Assistance	1,007	16.4%
Construction	840	2.8%
Retail Trade	672	-1%

TOP 3 OCCUPATIONS IN 2021

	No.	% change since 2016
Technicians and Trades Workers	1,109	-0.7%
Professionals	1,092	1.8%
Clerical and Administrative Workers	1,057	0%

METHOD OF TRAVEL TO WORK

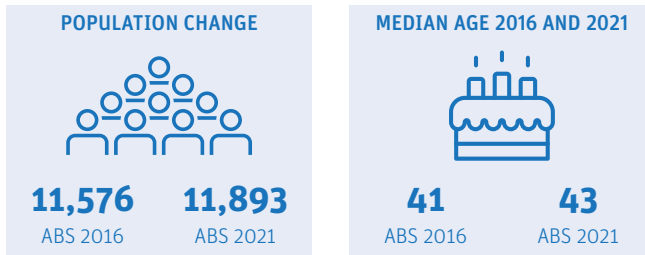
	No.	% change since 2016
 Car	4,665	-8%
 Public Transport	162	-2%
 Worked from home	898	8.6%

Wellington Point

Demographic snapshot 2021 Census

How has Wellington Point changed since the last Census (2016)

Population and age Breakdown

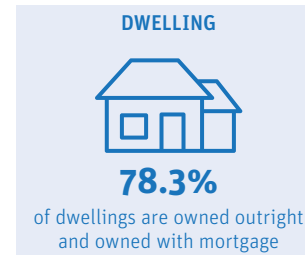
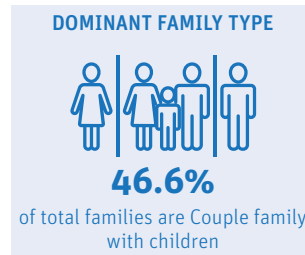


Wellington Point had a population of 11,893 in 2021 and experienced a moderate growth of 317 residents when compared to the previous Census period. The median age in the suburb was 43, which was similar to Redland City's median age.

Who is a typical Wellington Point resident*

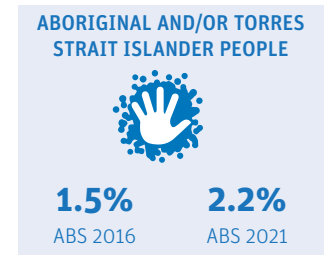
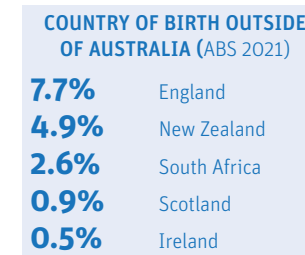


Family and dwelling



Couple family with children (47%) continued to be the dominant family type in Wellington Point. Family households (82%) also continued to be the main household type in 2021.

Characteristics



Majority of residents were born in Australia (73%), and 2.2% of residents identified as Aboriginal and/or Torres Strait Islander. Almost 1 in 3 residents (30%) reported having one or more long term health conditions. 597 residents reported requiring assistance with core activities due to a disability. Almost half (49%) of residents who reported the need for assistance were older people (65+).

AGE BREAKDOWN		
2016	AGE	2021
19.40%	0-14	18.00%
66.30%	15-64	63.80%
14.30%	65+	18.20%

	HOUSEHOLD COMPOSITION		
	2016	2021	Change
Family	83.50%	82.10%	▼
Single or lone person	14.60%	16.30%	▲
Group	1.90%	1.60%	▼

	MEDIANS		
	2016	2021	Change
Rent (weekly)	\$420	\$450	▲
Mortgage (monthly)	\$2000	\$2013	▲
House income (weekly)	\$1913	\$2173	▲

LONG-TERM HEALTH CONDITION	
9%	Asthma
8.9%	Mental health
8.9%	Other long-term
8.8%	Arthritis
4.5%	Diabetes

CORE ACTIVITY NEED FOR ASSISTANCE BY AGE		
AGE	NO.	%
0-14	104	17.4
15-24	49	8.2
25-44	54	9
45-64	104	17.3
65+	293	49.1

*Data largely based on mode. Mode is the value that appears most frequently in a given set of data. For more information visit <https://profile.id.com.au/redland>

Wellington Point

Employment Snapshot 2021 Census




THE LABOUR FORCE

Labour force		Participation rate	
6,310	6,496	67.6%	66.7%
ABS2016	ABS2021	ABS2016	ABS2021

Wellington Point's labour force increased from 6,310 in 2016 to 6,496 in 2021 and the participation rate declined by 0.9%. While the unemployment rate declined from 5.2% to 3.9% between the two Census periods, the proportion of Wellington Point residents working full time declined by 3.2%.

EMPLOYMENT STATUS

People who reported being in the labour force, aged 15 years and over

	2016	2021
 Worked full-time	59.2%	56%
 Worked part-time	31.8%	32%
 Unemployed	5.2%	3.9%

UNPAID WORK AND EDUCATION

Disability assistance		Volunteer	
11.7%	13.5%	20.5%	16.6%
ABS2016	ABS2021	ABS2016	ABS2021

EDUCATION ATTAINMENT

	2016	2021
Bachelor Degree and above	31.5%	34.1%
Advance Diploma and Diploma level	18.5%	19.8%
Vocational/Trades (Certificate I-IV)	33.9%	32.5%

Unpaid care is an important contributor to economic and community well-being. In Wellington Point, the percentage of residents aged 15 and over providing disability assistance rose from 11.7% to 13.5%, while volunteers declined by 3.9%.

Health Care and Social Assistance remained the top employing industry, followed by Construction and Education and Training. The COVID-19 pandemic and the acceptance of flexible work arrangements resulted in a 13.3% increase in people working from home.

TOP 3 FIELDS OF STUDY IN 2021

	No.	% change since 2016
Management and Commerce	1,445	18.2%
Engineering and Related Technologies	1,045	1.63%
Health	702	15.24%

TYPE OF JOBS AND TRAVEL TO WORK




TOP 3 INDUSTRIES OF EMPLOYMENT IN 2021

	No.	% change since 2016
Health Care and Social Assistance	924	28%
Construction	656	5.1%
Education and Training	599	7.9%

TOP 3 OCCUPATIONS IN 2021

	No.	% change since 2016
Professionals	1,355	1.4%
Managers	960	1.1%
Clerical and Administrative Workers	945	-1.5%

METHOD OF TRAVEL TO WORK

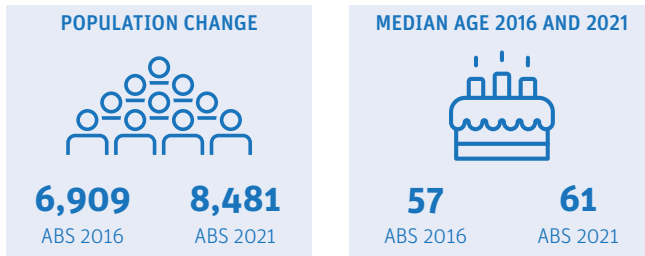
	No.	% change since 2016
 Car	3,968	-10.8%
 Public Transport	255	-4%
 Worked from home	1,142	13.3%

Southern Moreton Bay Islands

Demographic snapshot 2021 Census

How has Southern Moreton Bay Islands changed since the last Census (2016)

Population and age Breakdown



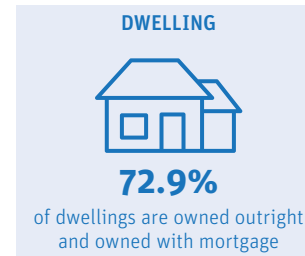
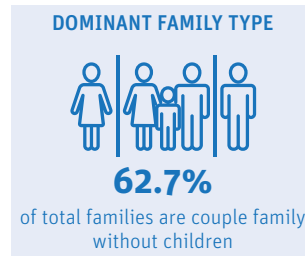
Southern Moreton Bay Islands (which includes Coochiemudlo) had a population of 8,481 in 2021, which is a 23% increase compared to the previous Census Period population of 6909. This represents an average annual growth rate of 3.8% over the period of five years, which is more than three times of Redland city's annual growth rate. The islands recorded more elderly demographic characteristics with a median age of 61, significantly higher than Redland City's median age of 43. The islands have an ageing profile, with the people aged 65 and over has grown from 34% in 2016 to almost 40% in 2021.

AGE BREAKDOWN		
2016	AGE	2021
11.00%	0-14	8.10%
54.80%	15-64	52.30%
34.10%	65+	39.60%

Who is a typical Southern Moreton Bay Islands resident*



Family and dwelling

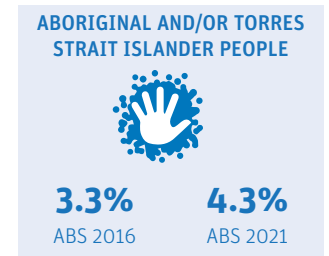
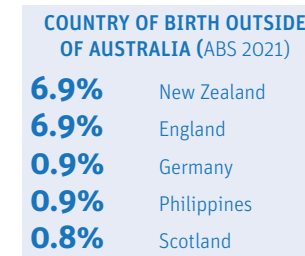


Couple family without children (63%) was the dominant family type in the islands. While the dominant household type in the islands were family households (54%), a significant proportion (41%) were lone person households.

	HOUSEHOLD COMPOSITION		
	2016	2021	Change
Family	56.00%	53.50%	▼
Single or lone person	37.80%	40.80%	▲
Group	6.20%	5.70%	▼

	MEDIANS		
	2016	2021	Change
Rent (weekly)	\$240	\$260	▲
Mortgage (monthly)	\$975	\$904	▼
House income (weekly)	\$707	\$761	▲

Characteristics



Majority of residents were born in Australia (66%), and 4.3% of residents identified as Aboriginal and/or Torres Strait Islander. Almost half of island residents (47%) reported having one or more long term health conditions. More than one thousand residents (1,140) reported requiring assistance with core activities due to a disability. More than half (51%) of residents who reported needing assistance were older people (65+).

LONG-TERM HEALTH CONDITION	
20.2%	Arthritis
16.6%	Mental health
14.4%	Other long-term
10.4%	Asthma
9.2%	Heart disease

CORE ACTIVITY NEED FOR ASSISTANCE BY AGE		
AGE	NO.	%
0-14	63	5.5
15-24	35	3.1
25-44	87	7.6
45-64	369	32.4
65+	580	50.9

*Data largely based on mode. Mode is the value that appears most frequently in a given set of data. For more information visit <https://profile.id.com.au/redland>

Southern Moreton Bay Islands

Employment Snapshot 2021 Census




THE LABOUR FORCE

Labour force		Participation rate	
1,987	2,421	32.3%	31.1%
ABS2016	ABS2021	ABS2016	ABS2021

Southern Moreton Bay Islands' labour force increased from 1,987 in 2016 to 2,421 in 2021 and the participation rate declined by 1.2%. While the unemployment rate declined from 16.3% to 13.5% between the two Census periods, the proportion of Southern Moreton Bay Islands residents working full time declined by 2%.

EMPLOYMENT STATUS

People who reported being in the labour force, aged 15 years and over

	2016	2021
 Worked full-time	36.8%	34.8%
 Worked part-time	39.8%	39.5%
 Unemployed	16.3%	13.5%

UNPAID WORK AND EDUCATION

Disability assistance		Volunteer	
15.4%	16.8%	17.7%	15.1%
ABS2016	ABS2021	ABS2016	ABS2021

EDUCATION ATTAINMENT

	2016	2021
Bachelor Degree and above	19.6%	19.5%
Advance Diploma and Diploma level	15.3%	16.1%
Vocational/Trades (Certificate I-IV)	38.8%	38.6%

Unpaid care is an important contributor to economic and community well-being. In Southern Moreton Bay Islands, the percentage of residents aged 15 and over providing disability assistance rose from 15.4% to 16.8%, while volunteers declined by 2.6%.

Health Care and Social Assistance remained the top employing industry, followed by Construction and Retail Trade. The COVID-19 pandemic and the acceptance of flexible work arrangements resulted in a 9.5% increase in people working from home.

TOP 3 FIELDS OF STUDY IN 2021

	No.	% change since 2016
Engineering and Related Technologies	741	15.52%
Management and Commerce	599	31.55%
Society and Culture	586	26.62%

TYPE OF JOBS AND TRAVEL TO WORK




TOP 3 INDUSTRIES OF EMPLOYMENT IN 2021

	No.	% change since 2016
Health Care and Social Assistance	358	40.4%
Construction	262	29.7%
Retail Trade	211	13.4%

TOP 3 OCCUPATIONS IN 2021

	No.	% change since 2016
Technicians and Trades Workers	326	1.1%
Professionals	324	0.9%
Community and Personal Service Workers	319	1.4%

METHOD OF TRAVEL TO WORK

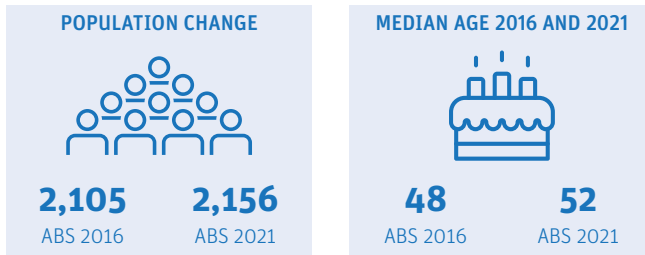
	No.	% change since 2016
 Car	1,169	24.6%
 Public Transport	639	19.6%
 Worked from home	377	9.5%

North Stradbroke Island

Demographic snapshot 2021 Census

How has North Stradbroke Island changed since the last Census (2016)

Population and age Breakdown



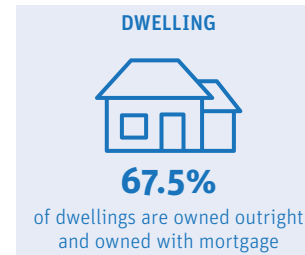
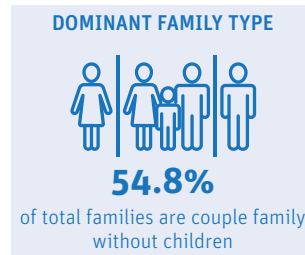
North Stradbroke Island (NSI) had a population of 2,156 in 2021. The island had an older demographic with a median age of 52, higher than Redland City's median age of 43. Almost 1 in 3 residents (or 29%) were in the 65 and over age cohort.

AGE BREAKDOWN		
2016	AGE	2021
16.40%	0-14	14.50%
59.60%	15-64	56.10%
24.00%	65+	29.40%

Who is a typical North Stradbroke Island resident*



Family and dwelling

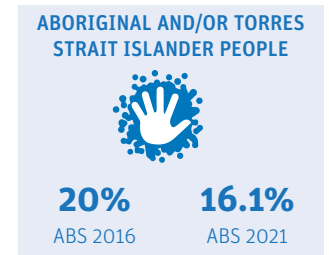
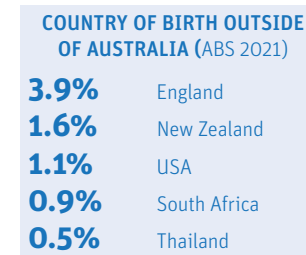


Couple family without children (55%) was the dominant family type in NSI. While the dominant household type were family households (63%), at least 1 in 3 households were lone person households.

	HOUSEHOLD COMPOSITION		
	2016	2021	Change
Family	65.20%	63.40%	▼
Single or lone person	31.80%	32.90%	▲
Group	3.00%	3.70%	▲

	MEDIANS		
	2016	2021	Change
Rent (weekly)	\$255	\$300	▲
Mortgage (monthly)	\$1733	\$1733	NC
House income (weekly)	\$1013	\$1147	▲

Characteristics



A large proportion of residents were born in Australia (75%), with 347 residents identify as Aboriginal and/or Torres Strait Islander. At least 1 in 3 residents (33%) reported having one or more long term health conditions. More than a hundred (121) residents reported requiring assistance with core activities due to a disability. More than half (53%) of those requiring assistance were older people (65+).

LONG-TERM HEALTH CONDITION	
11%	Arthritis
9.1%	Mental health
8%	Asthma
7.9%	Other long-term
6.2%	Heart disease

CORE ACTIVITY NEED FOR ASSISTANCE BY AGE		
AGE	NO.	%
0-14	16	13.2
15-24	3	2.5
25-44	7	5.8
45-64	28	23.1
65+	64	52.9

*Data largely based on mode. Mode is the value that appears most frequently in a given set of data. For more information visit <https://profile.id.com.au/redland>

North Stradbroke Island

Employment Snapshot 2021 Census




THE LABOUR FORCE

Labour force		Participation rate	
894	893	50.8%	48.5%
ABS2016	ABS2021	ABS2016	ABS2021

North Stradbroke Island's labour force decreased from 894 in 2016 to 893 in 2021 and the participation rate declined by 2.3%. While the unemployment rate declined from 7.0% to 3.1% between the two Census periods, the proportion of North Stradbroke Island residents working full time declined by 7.9%.

EMPLOYMENT STATUS

People who reported being in the labour force, aged 15 years and over

	2016	2021
 Worked full-time	50.2%	42.3%
 Worked part-time	37.1%	40%
 Unemployed	7%	3.1%

UNPAID WORK AND EDUCATION

Disability assistance		Volunteer	
13.3%	13.3%	22.6%	18.9%
ABS2016	ABS2021	ABS2016	ABS2021

EDUCATION ATTAINMENT

	2016	2021
Bachelor Degree and above	22%	29.9%
Advance Diploma and Diploma level	15.4%	13.2%
Vocational/Trades (Certificate I-IV)	35.6%	34.3%

Unpaid care is an important contributor to economic and community well-being. In North Stradbroke Island, the percentage of residents aged 15 and over providing disability assistance remained steady, while volunteers declined by 3.7%.

Accommodation and Food Services remained the top employing industry, followed by Health Care and Social Assistance and Construction. The COVID-19 pandemic and the acceptance of flexible work arrangements resulted in a 8.2% increase in people working from home.

TOP 3 FIELDS OF STUDY IN 2021

	No.	% change since 2016
Engineering and Related Technologies	168	-2.38%
Management and Commerce	142	23.24%
Society and Culture	123	3.25%

TYPE OF JOBS AND TRAVEL TO WORK

TOP 3 INDUSTRIES OF EMPLOYMENT IN 2021

	No.	% change since 2016
Accommodation and Food Services	156	6.1%
Health Care and Social Assistance	83	-8.8%
Construction	79	-7.1%

TOP 3 OCCUPATIONS IN 2021

	No.	% change since 2016
Professionals	156	0.6%
Managers	143	3.3%
Labourers	136	-0.5%

METHOD OF TRAVEL TO WORK

	No.	% change since 2016
 Car	464	1.2%
 Public Transport	74	5%
 Worked from home	145	8.2%