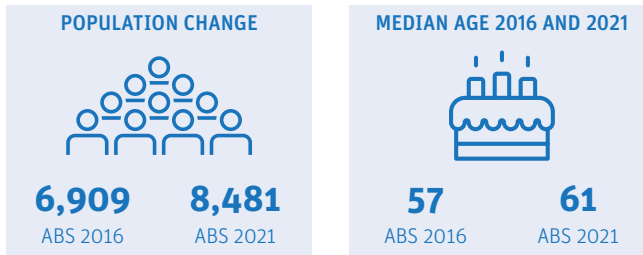


# Southern Moreton Bay Islands

## Demographic snapshot 2021 Census

How has Southern Moreton Bay Islands changed since the last Census (2016)

### Population and age Breakdown



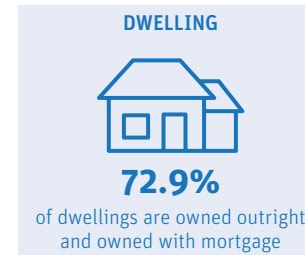
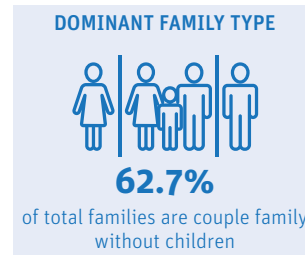
Southern Moreton Bay Islands (which includes Coochiemudlo) had a population of 8,481 in 2021, which is a 23% increase compared to the previous Census Period population of 6909. This represents an average annual growth rate of 3.8% over the period of five years, which is more than three times of Redland city's annual growth rate. The islands recorded more elderly demographic characteristics with a median age of 61, significantly higher than Redland City's median age of 43. The islands have an ageing profile, with the people aged 65 and over has grown from 34% in 2016 to almost 40% in 2021.

AGE BREAKDOWN		
2016	AGE	2021
<b>11.00%</b>	<b>0-14</b>	<b>8.10%</b>
<b>54.80%</b>	<b>15-64</b>	<b>52.30%</b>
<b>34.10%</b>	<b>65+</b>	<b>39.60%</b>

### Who is a typical Southern Moreton Bay Islands resident\*

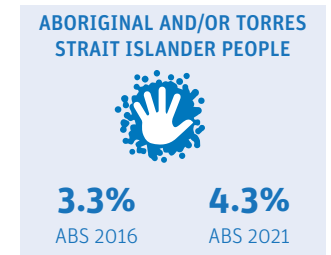
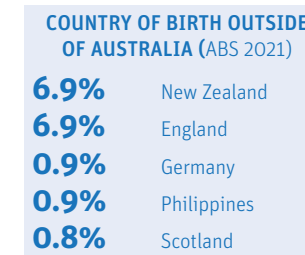


### Family and dwelling



Couple family without children (63%) was the dominant family type in the islands. While the dominant household type in the islands were family households (54%), a significant proportion (41%) were lone person households.

### Characteristics



Majority of residents were born in Australia (66%), and 4.3% of residents identified as Aboriginal and/or Torres Strait Islander. Almost half of island residents (47%) reported having one or more long term health conditions. More than one thousand residents (1,140) reported requiring assistance with core activities due to a disability. More than half (51%) of residents who reported needing assistance were older people (65+).

	HOUSEHOLD COMPOSITION		
	2016	2021	Change
<b>Family</b>	56.00%	53.50%	▼
<b>Single or lone person</b>	37.80%	40.80%	▲
<b>Group</b>	6.20%	5.70%	▼

	MEDIANS		
	2016	2021	Change
<b>Rent (weekly)</b>	\$240	\$260	▲
<b>Mortgage (monthly)</b>	\$975	\$904	▼
<b>House income (weekly)</b>	\$707	\$761	▲

LONG-TERM HEALTH CONDITION	
<b>20.2%</b>	Arthritis
<b>16.6%</b>	Mental health
<b>14.4%</b>	Other long-term
<b>10.4%</b>	Asthma
<b>9.2%</b>	Heart disease

CORE ACTIVITY NEED FOR ASSISTANCE BY AGE		
AGE	NO.	%
<b>0-14</b>	63	5.5
<b>15-24</b>	35	3.1
<b>25-44</b>	87	7.6
<b>45-64</b>	369	32.4
<b>65+</b>	580	50.9

\*Data largely based on mode. Mode is the value that appears most frequently in a given set of data. For more information visit <https://profile.id.com.au/redland>

# Southern Moreton Bay Islands

## Employment Snapshot 2021 Census




### THE LABOUR FORCE

Labour force		Participation rate	
1,987	2,421	32.3%	31.1%
ABS2016	ABS2021	ABS2016	ABS2021

Southern Moreton Bay Islands' labour force increased from 1,987 in 2016 to 2,421 in 2021 and the participation rate declined by 1.2%. While the unemployment rate declined from 16.3% to 13.5% between the two Census periods, the proportion of Southern Moreton Bay Islands residents working full time declined by 2%.

### EMPLOYMENT STATUS

People who reported being in the labour force, aged 15 years and over

	2016	2021
 Worked full-time	36.8%	34.8%
 Worked part-time	39.8%	39.5%
 Unemployed	16.3%	13.5%

### UNPAID WORK AND EDUCATION

Disability assistance		Volunteer	
15.4%	16.8%	17.7%	15.1%
ABS2016	ABS2021	ABS2016	ABS2021

### EDUCATION ATTAINMENT

	2016	2021
<b>Bachelor Degree and above</b>	19.6%	19.5%
<b>Advance Diploma and Diploma level</b>	15.3%	16.1%
<b>Vocational/Trades (Certificate I-IV)</b>	38.8%	38.6%

Unpaid care is an important contributor to economic and community well-being. In Southern Moreton Bay Islands, the percentage of residents aged 15 and over providing disability assistance rose from 15.4% to 16.8%, while volunteers declined by 2.6%.

Health Care and Social Assistance remained the top employing industry, followed by Construction and Retail Trade. The COVID-19 pandemic and the acceptance of flexible work arrangements resulted in a 9.5% increase in people working from home.

### TOP 3 FIELDS OF STUDY IN 2021

	No.	% change since 2016
<b>Engineering and Related Technologies</b>	741	15.52%
<b>Management and Commerce</b>	599	31.55%
<b>Society and Culture</b>	586	26.62%

### TYPE OF JOBS AND TRAVEL TO WORK




#### TOP 3 INDUSTRIES OF EMPLOYMENT IN 2021

	No.	% change since 2016
<b>Health Care and Social Assistance</b>	358	40.4%
<b>Construction</b>	262	29.7%
<b>Retail Trade</b>	211	13.4%

#### TOP 3 OCCUPATIONS IN 2021

	No.	% change since 2016
<b>Technicians and Trades Workers</b>	326	1.1%
<b>Professionals</b>	324	0.9%
<b>Community and Personal Service Workers</b>	319	1.4%

#### METHOD OF TRAVEL TO WORK

	No.	% change since 2016
 Car	1,169	24.6%
 Public Transport	639	19.6%
 Worked from home	377	9.5%