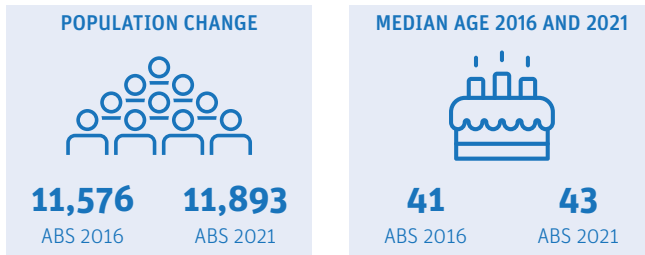


# Wellington Point

## Demographic snapshot 2021 Census

### How has Wellington Point changed since the last Census (2016)

#### Population and age Breakdown

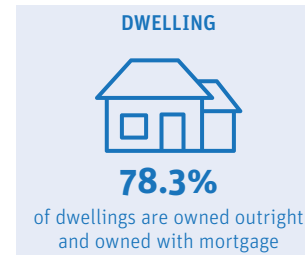
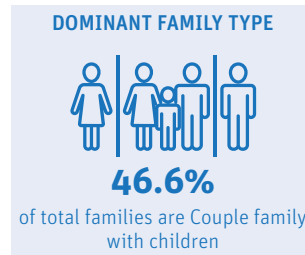


Wellington Point had a population of 11,893 in 2021 and experienced a moderate growth of 317 residents when compared to the previous Census period. The median age in the suburb was 43, which was similar to Redland City's median age.

### Who is a typical Wellington Point resident\*

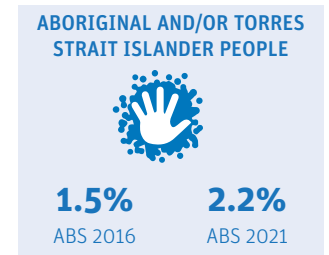
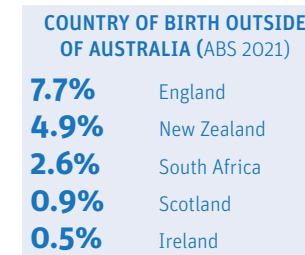


#### Family and dwelling



Couple family with children (47%) continued to be the dominant family type in Wellington Point. Family households (82%) also continued to be the main household type in 2021.

#### Characteristics



Majority of residents were born in Australia (73%), and 2.2% of residents identified as Aboriginal and/or Torres Strait Islander. Almost 1 in 3 residents (30%) reported having one or more long term health conditions. 597 residents reported requiring assistance with core activities due to a disability. Almost half (49%) of residents who reported the need for assistance were older people (65+).

AGE BREAKDOWN		
2016	AGE	2021
<b>19.40%</b>	<b>0-14</b>	<b>18.00%</b>
<b>66.30%</b>	<b>15-64</b>	<b>63.80%</b>
<b>14.30%</b>	<b>65+</b>	<b>18.20%</b>

	HOUSEHOLD COMPOSITION		
	2016	2021	Change
<b>Family</b>	83.50%	82.10%	▼
<b>Single or lone person</b>	14.60%	16.30%	▲
<b>Group</b>	1.90%	1.60%	▼

	MEDIANS		
	2016	2021	Change
<b>Rent (weekly)</b>	\$420	\$450	▲
<b>Mortgage (monthly)</b>	\$2000	\$2013	▲
<b>House income (weekly)</b>	\$1913	\$2173	▲

LONG-TERM HEALTH CONDITION	
<b>9%</b>	Asthma
<b>8.9%</b>	Mental health
<b>8.9%</b>	Other long-term
<b>8.8%</b>	Arthritis
<b>4.5%</b>	Diabetes

CORE ACTIVITY NEED FOR ASSISTANCE BY AGE		
AGE	NO.	%
<b>0-14</b>	104	17.4
<b>15-24</b>	49	8.2
<b>25-44</b>	54	9
<b>45-64</b>	104	17.3
<b>65+</b>	293	49.1

\*Data largely based on mode. Mode is the value that appears most frequently in a given set of data. For more information visit <https://profile.id.com.au/redland>

# Wellington Point

## Employment Snapshot 2021 Census




### THE LABOUR FORCE

Labour force		Participation rate	
6,310	6,496	67.6%	66.7%
ABS2016	ABS2021	ABS2016	ABS2021

Wellington Point's labour force increased from 6,310 in 2016 to 6,496 in 2021 and the participation rate declined by 0.9%. While the unemployment rate declined from 5.2% to 3.9% between the two Census periods, the proportion of Wellington Point residents working full time declined by 3.2%.

### EMPLOYMENT STATUS

People who reported being in the labour force, aged 15 years and over

	2016	2021
 Worked full-time	59.2%	56%
 Worked part-time	31.8%	32%
 Unemployed	5.2%	3.9%

### UNPAID WORK AND EDUCATION

Disability assistance		Volunteer	
11.7%	13.5%	20.5%	16.6%
ABS2016	ABS2021	ABS2016	ABS2021

### EDUCATION ATTAINMENT

	2016	2021
<b>Bachelor Degree and above</b>	31.5%	34.1%
<b>Advance Diploma and Diploma level</b>	18.5%	19.8%
<b>Vocational/Trades (Certificate I-IV)</b>	33.9%	32.5%

Unpaid care is an important contributor to economic and community well-being. In Wellington Point, the percentage of residents aged 15 and over providing disability assistance rose from 11.7% to 13.5%, while volunteers declined by 3.9%.

Health Care and Social Assistance remained the top employing industry, followed by Construction and Education and Training. The COVID-19 pandemic and the acceptance of flexible work arrangements resulted in a 13.3% increase in people working from home.

### TOP 3 FIELDS OF STUDY IN 2021

	No.	% change since 2016
<b>Management and Commerce</b>	1,445	18.2%
<b>Engineering and Related Technologies</b>	1,045	1.63%
<b>Health</b>	702	15.24%

### TYPE OF JOBS AND TRAVEL TO WORK




#### TOP 3 INDUSTRIES OF EMPLOYMENT IN 2021

	No.	% change since 2016
<b>Health Care and Social Assistance</b>	924	28%
<b>Construction</b>	656	5.1%
<b>Education and Training</b>	599	7.9%

#### TOP 3 OCCUPATIONS IN 2021

	No.	% change since 2016
<b>Professionals</b>	1,355	1.4%
<b>Managers</b>	960	1.1%
<b>Clerical and Administrative Workers</b>	945	-1.5%

#### METHOD OF TRAVEL TO WORK

	No.	% change since 2016
 Car	3,968	-10.8%
 Public Transport	255	-4%
 Worked from home	1,142	13.3%