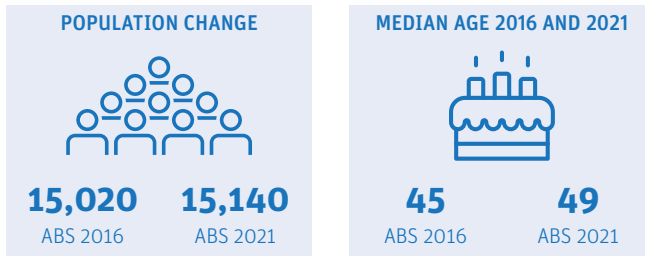


Victoria Point

Demographic snapshot 2021 Census

How has Victoria Point changed since the last Census (2016)

Population and age Breakdown



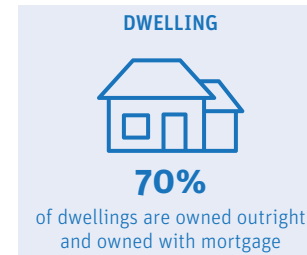
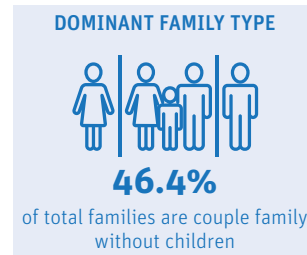
Victoria Point had a population of 15,140 in 2021 and experienced a modest growth of 120 residents since the previous Census period. The median age in the suburb was 49, which was higher than Redland City's median age of 43. The proportion of 65 and over grew from 25% in 2016 to 29% in 2021.

AGE BREAKDOWN		
2016	AGE	2021
17.30%	0-14	15.30%
58.10%	15-64	56.20%
24.60%	65+	28.50%

Who is a typical Victoria Point resident*



Family and dwelling

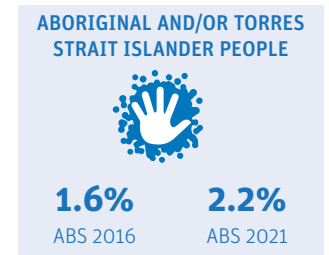
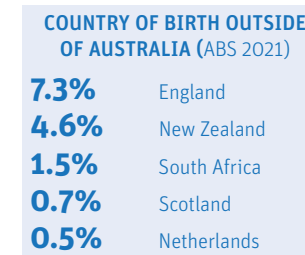


Similar to the previous Census period, Couple family without children (46%) continued to be the dominant family type in Victoria Point. Family households (73%) also continued to be the main household type in 2021.

	HOUSEHOLD COMPOSITION		
	2016	2021	Change
Family	76.10%	73.40%	▼
Single or lone person	21.70%	24.60%	▲
Group	2.00%	2.00%	NC

	MEDIAN		
	2016	2021	Change
Rent (weekly)	\$420	\$450	▲
Mortgage (monthly)	\$1950	\$1950	NC
House income (weekly)	\$1387	\$1511	▲

Characteristics



A large proportion of residents were born in Australia (75%), and 2.2% of residents identified as Aboriginal and/or Torres Strait Islander. More than 1 in 3 residents (37%) reported having one or more long term health conditions. More than a thousand residents (1,077) reported requiring assistance with core activities due to a disability. More than half (65%) of residents who reported the need for assistance were older people (65+).

LONG-TERM HEALTH CONDITION	
13.4%	Arthritis
11.1%	Other long-term
10.6%	Mental health
9.3%	Asthma
7.2%	Heart disease

CORE ACTIVITY NEED FOR ASSISTANCE BY AGE		
AGE	NO.	%
0-14	137	10.4
15-24	67	5.1
25-44	85	6.4
45-64	177	13.4
65+	863	65.3

*Data largely based on mode. Mode is the value that appears most frequently in a given set of data. For more information visit <https://profile.id.com.au/redland>

Victoria Point

Employment Snapshot 2021 Census




THE LABOUR FORCE

Labour force		Participation rate	
7,025	7,050	56.6%	54.9%
ABS2016	ABS2021	ABS2016	ABS2021

Victoria Point's labour force increased from 7,025 in 2016 to 7,050 in 2021 and the participation rate declined by 1.7%. While the unemployment rate declined from 5.8% to 4.4% between the two Census periods, the proportion of Victoria Point residents working full time declined by 3.3%.

EMPLOYMENT STATUS

People who reported being in the labour force, aged 15 years and over

	2016	2021
 Worked full-time	58.1%	54.8%
 Worked part-time	31.8%	31.2%
 Unemployed	5.8%	4.4%

UNPAID WORK AND EDUCATION

Disability assistance		Volunteer	
11.9%	13.2%	17.9%	13.3%
ABS2016	ABS2021	ABS2016	ABS2021

EDUCATION ATTAINMENT

	2016	2021
Bachelor Degree and above	22.6%	26.2%
Advance Diploma and Diploma level	17.5%	18.7%
Vocational/Trades (Certificate I-IV)	40.4%	40.1%

Unpaid care is an important contributor to economic and community well-being. In Victoria Point, the percentage of residents aged 15 and over providing disability assistance rose from 11.9% to 13.2%, while volunteers declined by 4.6%.

Health Care and Social Assistance remained the top employing industry, followed by Construction and Retail Trade. The COVID-19 pandemic and the acceptance of flexible work arrangements resulted in a 8.6% increase in people working from home.

TOP 3 FIELDS OF STUDY IN 2021

	No.	% change since 2016
Management and Commerce	1,399	3.15%
Engineering and Related Technologies	1,365	11.14%
Society and Culture	869	15.3%

TYPE OF JOBS AND TRAVEL TO WORK

TOP 3 INDUSTRIES OF EMPLOYMENT IN 2021

	No.	% change since 2016
Health Care and Social Assistance	1,007	16.4%
Construction	840	2.8%
Retail Trade	672	-1%

TOP 3 OCCUPATIONS IN 2021

	No.	% change since 2016
Technicians and Trades Workers	1,109	-0.7%
Professionals	1,092	1.8%
Clerical and Administrative Workers	1,057	0%

METHOD OF TRAVEL TO WORK

	No.	% change since 2016
 Car	4,665	-8%
 Public Transport	162	-2%
 Worked from home	898	8.6%