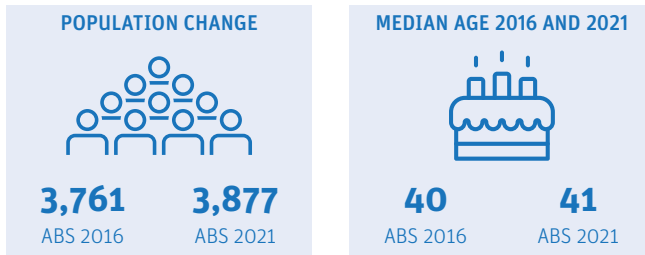


# Thorneside

## Demographic snapshot 2021 Census

### How has Thorneside changed since the last Census (2016)

#### Population and age Breakdown



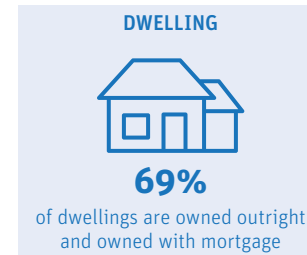
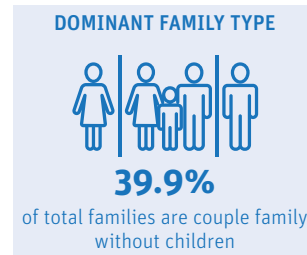
Thorneside had a population of 3,877 in 2021 and experienced a modest growth of 116 residents since the previous Census period. The median age in the suburb was 41, slightly lower than Redland City's median age of 43.

AGE BREAKDOWN		
2016	AGE	2021
<b>18.10%</b>	<b>0-14</b>	<b>19.40%</b>
<b>65.80%</b>	<b>15-64</b>	<b>61.50%</b>
<b>16.10%</b>	<b>65+</b>	<b>19.10%</b>

### Who is a typical Thorneside resident\*

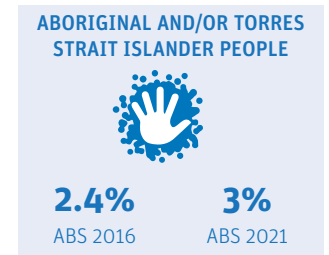
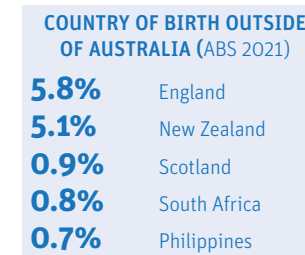


### Family and dwelling



Couple family without children (40%) continued to be the dominant family type in Thorneside. Family households (67%) also continued to be the main household type in 2021.

### Characteristics



Majority of residents were born in Australia (76%), and 3% of residents identified as Aboriginal and/or Torres Strait Islander. About 1 in 3 residents (33%) reported having one or more long term health conditions. 186 residents reported requiring assistance with core activities due to a disability. About 39% of residents who reported the need for assistance were older people (65+).

	HOUSEHOLD COMPOSITION		
	2016	2021	Change
<b>Family</b>	67.40%	67.10%	▼
<b>Single or lone person</b>	29.20%	29.70%	▲
<b>Group</b>	3.40%	3.20%	▼

	MEDIANS		
	2016	2021	Change
<b>Rent (weekly)</b>	\$355	\$370	▲
<b>Mortgage (monthly)</b>	\$1777	\$1787	▲
<b>House income (weekly)</b>	\$1299	\$1488	▲

LONG-TERM HEALTH CONDITION	
<b>11.6%</b>	Mental health
<b>10%</b>	Asthma
<b>10%</b>	Arthritis
<b>9.5%</b>	Other long-term
<b>5%</b>	Diabetes

CORE ACTIVITY NEED FOR ASSISTANCE BY AGE		
AGE	NO.	%
<b>0-14</b>	24	12.9
<b>15-24</b>	18	9.7
<b>25-44</b>	20	10.7
<b>45-64</b>	41	22
<b>65+</b>	72	38.7

\*Data largely based on mode. Mode is the value that appears most frequently in a given set of data. For more information visit <https://profile.id.com.au/redland>

# Thorneside

## Employment Snapshot 2021 Census




### THE LABOUR FORCE

Labour force		Participation rate	
1,964	2,007	63.9%	64.1%
ABS2016	ABS2021	ABS2016	ABS2021

Thorneside's labour force increased from 1,964 in 2016 to 2,007 in 2021 and the participation rate increased by 0.2%. While the unemployment rate declined from 6.6% to 5.5% between the two Census periods, the proportion of Thorneside residents working full time declined by 0.8%.

### EMPLOYMENT STATUS

People who reported being in the labour force, aged 15 years and over

	2016	2021
 Worked full-time	59%	58.2%
 Worked part-time	28.7%	27.7%
 Unemployed	6.6%	5.5%

### UNPAID WORK AND EDUCATION

Disability assistance		Volunteer	
11.8%	11.2%	16.5%	14.2%
ABS2016	ABS2021	ABS2016	ABS2021

### EDUCATION ATTAINMENT

	2016	2021
<b>Bachelor Degree and above</b>	26.5%	31.7%
<b>Advance Diploma and Diploma level</b>	17.9%	16.9%
<b>Vocational/Trades (Certificate I-IV)</b>	38.4%	37.9%

Unpaid care is an important contributor to economic and community well-being. In Thorneside, the percentage of residents aged 15 and over providing disability assistance decreased from 11.8% to 11.2%, while volunteers declined by 2.3%.

Health Care and Social Assistance remained the top employing industry, followed by Construction and Education and Training. The COVID-19 pandemic and the acceptance of flexible work arrangements resulted in a 10.9% increase in people working from home.

### TOP 3 FIELDS OF STUDY IN 2021

	No.	% change since 2016
<b>Management and Commerce</b>	401	16.46%
<b>Engineering and Related Technologies</b>	327	1.22%
<b>Society and Culture</b>	214	-5.14%

### TYPE OF JOBS AND TRAVEL TO WORK



#### TOP 3 INDUSTRIES OF EMPLOYMENT IN 2021

	No.	% change since 2016
<b>Health Care and Social Assistance</b>	279	20.3%
<b>Construction</b>	221	15.1%
<b>Education and Training</b>	173	7.5%

#### TOP 3 OCCUPATIONS IN 2021

	No.	% change since 2016
<b>Professionals</b>	379	2%
<b>Technicians and Trades Workers</b>	298	0.1%
<b>Clerical and Administrative Workers</b>	279	-2%

#### METHOD OF TRAVEL TO WORK

	No.	% change since 2016
 Car	1,240	-6.7%
 Public Transport	115	-4.2%
 Worked from home	284	10.9%