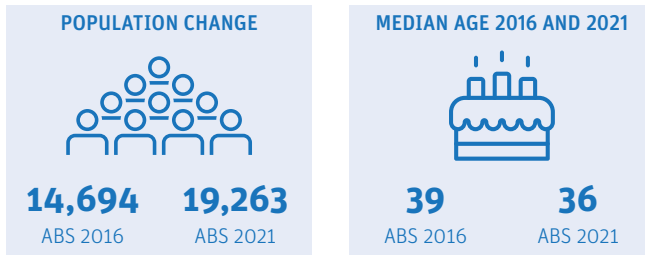


# Thornlands

## Demographic snapshot 2021 Census

### How has Thornlands changed since the last Census (2016)

#### Population and age Breakdown

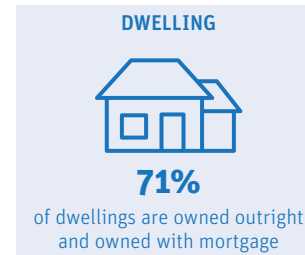
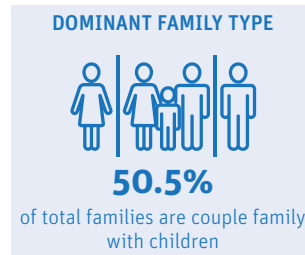


Thornlands had a population of 19,263 in 2021, a 31% growth compared to the previous Census. The suburb had an average annual growth rate of 6% which was almost four times that of Redland City's average annual growth rate. Median age was at 36.

### Who is a typical Thornlands resident\*

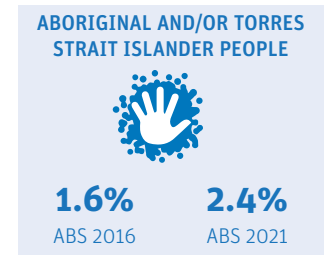
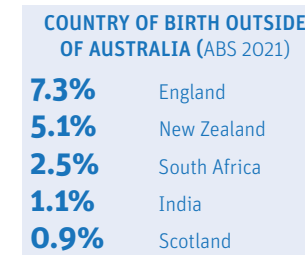


### Family and dwelling



Couple family with children (50%) continued to be the dominant family type in Thornlands. Family households (84%) also continued to be the main household type in 2021.

### Characteristics



Majority of residents were born in Australia (72%), and 2.4% of residents identified as Aboriginal and/or Torres Strait Islander. More than 1 in 4 residents (27%) reported having one or more long term health conditions. Almost a thousand residents (973) reported requiring assistance with core activities due to a disability. More than half (53%) of residents who reported the need for assistance were older people (65+).

AGE BREAKDOWN		
2016	AGE	2021
<b>20.90%</b>	<b>0-14</b>	<b>21.50%</b>
<b>65.00%</b>	<b>15-64</b>	<b>64.60%</b>
<b>14.10%</b>	<b>65+</b>	<b>14.00%</b>

	HOUSEHOLD COMPOSITION		
	2016	2021	Change
<b>Family</b>	85.10%	84.20%	▼
<b>Single or lone person</b>	13.10%	13.90%	▲
<b>Group</b>	1.80%	1.90%	▲

	MEDIANS		
	2016	2021	Change
<b>Rent (weekly)</b>	\$450	\$470	▲
<b>Mortgage (monthly)</b>	\$2167	\$2167	NC
<b>House income (weekly)</b>	\$1936	\$2218	▲

LONG-TERM HEALTH CONDITION	
<b>8.9%</b>	Mental health
<b>8.7%</b>	Asthma
<b>8.6%</b>	Other long-term
<b>7.6%</b>	Arthritis
<b>3.6%</b>	Diabetes

CORE ACTIVITY NEED FOR ASSISTANCE BY AGE		
AGE	NO.	%
<b>0-14</b>	176	18.1
<b>15-24</b>	67	6.9
<b>25-44</b>	85	8.7
<b>45-64</b>	177	18.2
<b>65+</b>	520	53.4

\*Data largely based on mode. Mode is the value that appears most frequently in a given set of data. For more information visit <https://profile.id.com.au/redland>

# Thornlands

## Employment Snapshot 2021 Census




### THE LABOUR FORCE

Labour force		Participation rate	
7,924	10,632	68.2%	70.3%
ABS2016	ABS2021	ABS2016	ABS2021

Thornlands's labour force increased from 7,924 in 2016 to 10,632 in 2021 and the participation rate increased by 2.1%. While the unemployment rate declined from 5.2% to 3.7% between the two Census periods, the proportion of Thornlands residents working full time declined by 3.0%.

### EMPLOYMENT STATUS

People who reported being in the labour force, aged 15 years and over

	2016	2021
 Worked full-time	60.9%	57.9%
 Worked part-time	30.3%	29.8%
 Unemployed	5.2%	3.7%

### UNPAID WORK AND EDUCATION

Disability assistance		Volunteer	
11.2%	11.7%	19.1%	12.5%
ABS2016	ABS2021	ABS2016	ABS2021

### EDUCATION ATTAINMENT

	2016	2021
<b>Bachelor Degree and above</b>	28.1%	31.4%
<b>Advance Diploma and Diploma level</b>	19.9%	19.8%
<b>Vocational/Trades (Certificate I-IV)</b>	37.1%	37.5%

Unpaid care is an important contributor to economic and community well-being. In Thornlands, the percentage of residents aged 15 and over providing disability assistance rose from 11.2% to 11.7%, while volunteers declined by 6.6%.

Health Care and Social Assistance remained the top employing industry, followed by Construction and Retail Trade. The COVID-19 pandemic and the acceptance of flexible work arrangements resulted in a 10% increase in people working from home.

### TOP 3 FIELDS OF STUDY IN 2021

	No.	% change since 2016
<b>Management and Commerce</b>	2,069	29.19%
<b>Engineering and Related Technologies</b>	1,629	21.18%
<b>Society and Culture</b>	1,130	39.65%

### TYPE OF JOBS AND TRAVEL TO WORK

#### TOP 3 INDUSTRIES OF EMPLOYMENT IN 2021

	No.	% change since 2016
<b>Health Care and Social Assistance</b>	1,563	69.5%
<b>Construction</b>	1,272	38.4%
<b>Retail Trade</b>	1,025	30.2%

#### TOP 3 OCCUPATIONS IN 2021

	No.	% change since 2016
<b>Professionals</b>	1,954	0.9%
<b>Clerical and Administrative Workers</b>	1,572	-1.5%
<b>Technicians and Trades Workers</b>	1,560	-0.5%

#### METHOD OF TRAVEL TO WORK

	No.	% change since 2016
 Car	7,088	-7.7%
 Public Transport	272	-2.9%
 Worked from home	1,564	10%