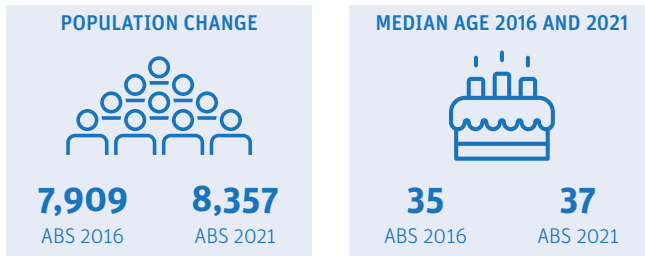


Sheldon - Mount Cotton

Demographic snapshot 2021 Census

How has Sheldon - Mount Cotton changed since the last Census (2016)

Population and age Breakdown

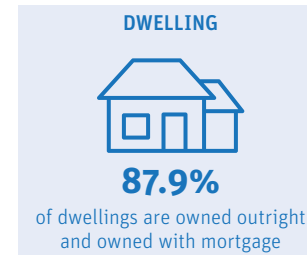
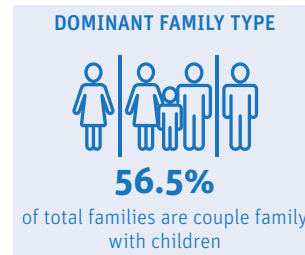


Sheldon-Mount Cotton had a population of 8,357 in 2021, a modest increase of 448 residents since the previous Census period. The suburb had a relatively younger demographic with median age at 37 compared to the Redland City's median age of 43.

Who is a typical Sheldon - Mount Cotton resident*

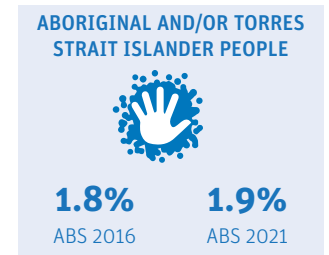
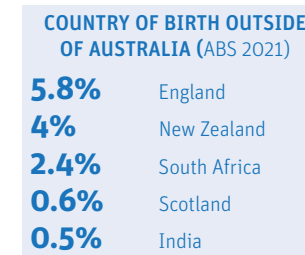


Family and dwelling



Similar to previous Census period, couple family with children (56%) continued to be the dominant family type in Sheldon-Mount Cotton in 2021. Family households (90%) also continued to be the main household type in 2021.

Characteristics



A large proportion of Sheldon-Mount Cotton residents were born in Australia (79%), and 2% of residents identified as Aboriginal and/or Torres Strait Islander. About 1 in 4 residents (or 26%) reported having one or more long term health conditions. 328 residents (or 4% of total population) needed assistance with core activities, with 38% of those in the 65 and up age category.

AGE BREAKDOWN		
2016	AGE	2021
24.60%	0-14	23.10%
66.50%	15-64	65.90%
8.90%	65+	10.90%

	HOUSEHOLD COMPOSITION		
	2016	2021	Change
Family	89.10%	89.80%	▲
Single or lone person	9.00%	9.00%	NC
Group	1.80%	1.20%	▼

	MEDIAN\$		
	2016	2021	Change
Rent (weekly)	\$460	\$475	▲
Mortgage (monthly)	\$2167	\$2167	NC
House income (weekly)	\$2210	\$2637	▲

LONG-TERM HEALTH CONDITION	
9%	Other long-term
9%	Mental health
8.5%	Asthma
6.5%	Arthritis
3.3%	Diabetes

CORE ACTIVITY NEED FOR ASSISTANCE BY AGE		
AGE	NO.	%
0-14	80	24.4
15-24	36	11
25-44	33	10.1
45-64	62	18.9
65+	124	37.8

*Data largely based on mode. Mode is the value that appears most frequently in a given set of data. For more information visit <https://profile.id.com.au/redland>

Sheldon - Mount Cotton

Employment Snapshot 2021 Census




THE LABOUR FORCE

Labour force		Participation rate	
4,487	4,803	75.3%	74.8%
ABS2016	ABS2021	ABS2016	ABS2021

Sheldon-Mount Cotton's labour force increased from 4,487 in 2016 to 4,803 in 2021 and the participation rate decreased by 0.5%. While the unemployment rate declined from 4.6% to 3.0% between the two Census periods, the proportion of Sheldon-Mount Cotton residents working full time declined by 3.8%.

EMPLOYMENT STATUS

People who reported being in the labour force, aged 15 years and over

	2016	2021
 Worked full-time	63.6%	59.8%
 Worked part-time	27.7%	28.9%
 Unemployed	4.6%	3%

UNPAID WORK AND EDUCATION

Disability assistance		Volunteer	
10.5%	12.6%	18%	14.3%
ABS2016	ABS2021	ABS2016	ABS2021

EDUCATION ATTAINMENT

	2016	2021
Bachelor Degree and above	31.5%	33.1%
Advance Diploma and Diploma level	18.2%	19.6%
Vocational/Trades (Certificate I-IV)	38.5%	38%

Unpaid care is an important contributor to economic and community well-being. In Sheldon-Mount Cotton, the percentage of residents aged 15 and over providing disability assistance rose from 10.5% to 12.6%, while volunteers declined by 3.7%.

Construction remained the top employing industry, followed by Health Care and Social Assistance and Education and Training. The COVID-19 pandemic and the acceptance of flexible work arrangements resulted in a 12.1% increase in people working from home.

TOP 3 FIELDS OF STUDY IN 2021

	No.	% change since 2016
Management and Commerce	825	14.06%
Engineering and Related Technologies	814	6.88%
Society and Culture	475	8.42%

TYPE OF JOBS AND TRAVEL TO WORK




TOP 3 INDUSTRIES OF EMPLOYMENT IN 2021

	No.	% change since 2016
Construction	666	17.5%
Health Care and Social Assistance	580	18.4%
Education and Training	498	15%

TOP 3 OCCUPATIONS IN 2021

	No.	% change since 2016
Professionals	965	0.8%
Technicians and Trades Workers	776	0.2%
Managers	739	1%

METHOD OF TRAVEL TO WORK

	No.	% change since 2016
 Car	3,094	-11.5%
 Public Transport	86	-2.7%
 Worked from home	831	12.1%