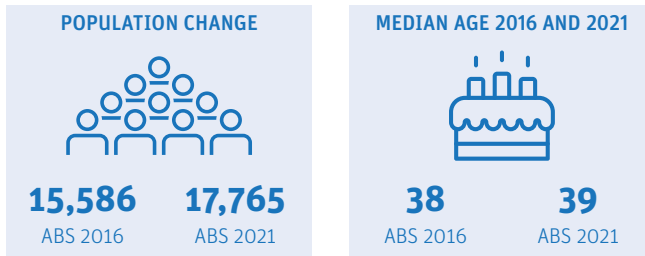


# Redland Bay

## Demographic snapshot 2021 Census

### How has Redland Bay changed since the last Census (2016)

#### Population and age Breakdown

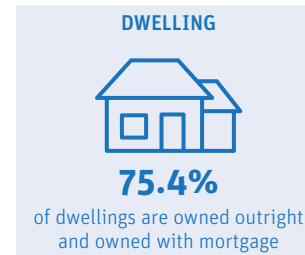
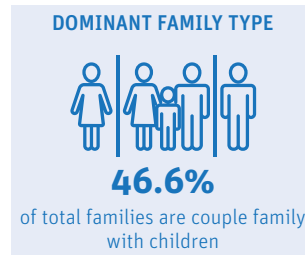


Redland Bay is one of Redland City's fastest growing suburbs. It had a population of 17,765 in 2021, a 14% growth compared to the previous Census. The suburb had an annual average growth of almost 3% which is almost double that of Redland city's annual growth rate. Median age was at 39.

### Who is a typical Redland Bay resident\*

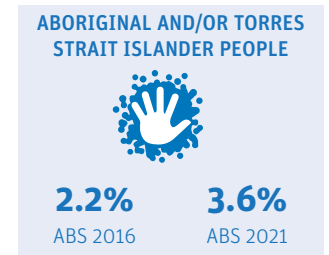
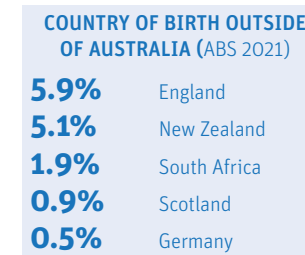


### Family and dwelling



Similar to previous Census period, couple family with children (47%) continued to be the dominant family type in Redland Bay in 2021. Family households (84%) also continued to be the main household type in 2021.

### Characteristics



Majority of Redland Bay residents were born in Australia (77%), and 3.6% of residents identified as Aboriginal and/or Torres Strait Islander. 31% of residents reported having one or more long term health conditions. 996 residents (or 6% of total population) reported needing assistance with core activities. Almost 1 in 5 of those needing assistance and care were in the 0-14 age group.

AGE BREAKDOWN		
2016	AGE	2021
<b>22.10%</b>	<b>0-14</b>	<b>20.40%</b>
<b>63.50%</b>	<b>15-64</b>	<b>63.00%</b>
<b>14.50%</b>	<b>65+</b>	<b>16.60%</b>

	HOUSEHOLD COMPOSITION		
	2016	2021	Change
<b>Family</b>	84.40%	84.30%	▼
<b>Single or lone person</b>	13.30%	13.70%	▲
<b>Group</b>	2.30%	2.00%	▼

	MEDIANS		
	2016	2021	Change
<b>Rent (weekly)</b>	\$450	\$470	▲
<b>Mortgage (monthly)</b>	\$2167	\$2076	▼
<b>House income (weekly)</b>	\$1754	\$2074	▲

LONG-TERM HEALTH CONDITION	
<b>9.8%</b>	Asthma
<b>9.5%</b>	Mental health
<b>9.3%</b>	Arthritis
<b>8.9%</b>	Other long-term
<b>4.2%</b>	Diabetes

CORE ACTIVITY NEED FOR ASSISTANCE BY AGE		
AGE	NO.	%
<b>0-14</b>	185	18.6
<b>15-24</b>	102	10.2
<b>25-44</b>	105	10.5
<b>45-64</b>	186	18.7
<b>65+</b>	420	42.2

\*Data largely based on mode. Mode is the value that appears most frequently in a given set of data. For more information visit <https://profile.id.com.au/redland>

# Redland Bay

## Employment Snapshot 2021 Census




### THE LABOUR FORCE

Labour force		Participation rate	
7,911	9,267	65.1%	65.5%
ABS2016	ABS2021	ABS2016	ABS2021

Redland Bay's labour force increased from 7,911 in 2016 to 9,267 in 2021 and the participation rate increased by 0.4%. While the unemployment rate declined from 5.9% to 4.0% between the two Census periods, the proportion of Redland Bay residents working full time declined by 1.1%.

### EMPLOYMENT STATUS

People who reported being in the labour force, aged 15 years and over

	2016	2021
 Worked full-time	59.1%	58%
 Worked part-time	30%	29.3%
 Unemployed	5.9%	4%

### UNPAID WORK AND EDUCATION

Disability assistance		Volunteer	
11.2%	12.2%	15.7%	11.4%
ABS2016	ABS2021	ABS2016	ABS2021

### EDUCATION ATTAINMENT

	2016	2021
<b>Bachelor Degree and above</b>	22.2%	25.7%
<b>Advance Diploma and Diploma level</b>	17.2%	18.4%
<b>Vocational/Trades (Certificate I-IV)</b>	42.4%	43%

Unpaid care is an important contributor to economic and community well-being. In Redland Bay, the percentage of residents aged 15 and over providing disability assistance rose from 11.2% to 12.2%, while volunteers declined by 4.3%.

Construction remained the top employing industry, followed by Health Care and Social Assistance and Retail Trade. The COVID-19 pandemic and the acceptance of flexible work arrangements resulted in a 8.6% increase in people working from home.

### TOP 3 FIELDS OF STUDY IN 2021

	No.	% change since 2016
<b>Management and Commerce</b>	1,707	23.2%
<b>Engineering and Related Technologies</b>	1,562	17.73%
<b>Society and Culture</b>	1,027	29.31%

### TYPE OF JOBS AND TRAVEL TO WORK

#### TOP 3 INDUSTRIES OF EMPLOYMENT IN 2021

	No.	% change since 2016
<b>Construction</b>	1,324	24.2%
<b>Health Care and Social Assistance</b>	1,217	40.9%
<b>Retail Trade</b>	862	12.4%

#### TOP 3 OCCUPATIONS IN 2021

	No.	% change since 2016
<b>Technicians and Trades Workers</b>	1,514	0.7%
<b>Professionals</b>	1,434	0.6%
<b>Clerical and Administrative Workers</b>	1,381	-0.6%

#### METHOD OF TRAVEL TO WORK

	No.	% change since 2016
 Car	6,216	-8.8%
 Public Transport	211	-2%
 Worked from home	1,244	8.6%