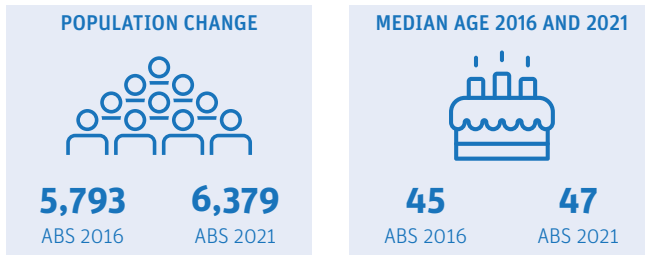


Ormiston

Demographic snapshot 2021 Census

How has Ormiston changed since the last Census (2016)

Population and age Breakdown



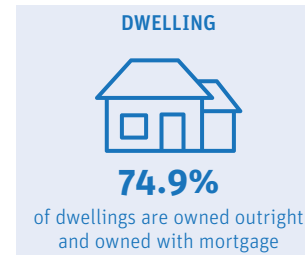
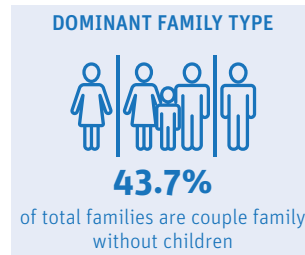
Ormiston had a population of 6,379 in 2021, a 10% growth when compared to the previous Census. The suburb had a slightly older demographic with median age at 47, compared to Redland City's median age of 43. Over the past 5 years, the proportion of 65 and over grew from 21% in 2016 to 24% in 2021.

AGE BREAKDOWN		
2016	AGE	2021
17.00%	0-14	16.50%
61.60%	15-64	59.10%
21.40%	65+	24.40%

Who is a typical Ormiston resident*

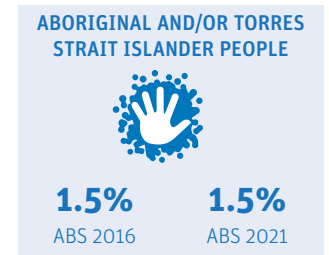
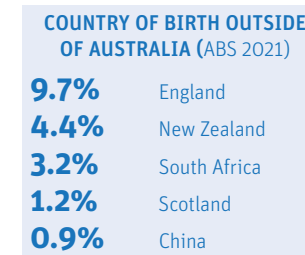


Family and dwelling



Couple family without children (44%) was the dominant family type in Ormiston in 2021. This is a shift from the previous Census where couple family with children was the dominant family type. Family households (77%) continued to be the main household type in 2021.

Characteristics



A large proportion of Ormiston residents were born in Australia (68%), and 1.5% of residents identified as Aboriginal and/or Torres Strait Islander. Almost 1 in 3 residents (32%) reported having one or more long term health conditions. About 6% (or 370) of residents reported needing assistance with core activities, with a majority (62%) of those needing assistance in the 65 and over age cohort.

	HOUSEHOLD COMPOSITION		
	2016	2021	Change
Family	75.80%	77.20%	▲
Single or lone person	22.30%	21.30%	▼
Group	1.90%	1.40%	▼

	MEDIANS		
	2016	2021	Change
Rent (weekly)	\$420	\$450	▲
Mortgage (monthly)	\$2000	\$2000	NC
House income (weekly)	\$1597	\$1913	▲

LONG-TERM HEALTH CONDITION	
10.9%	Arthritis
9.5%	Other long-term
9.1%	Asthma
8.2%	Mental health
5.6%	Heart Disease

CORE ACTIVITY NEED FOR ASSISTANCE BY AGE		
AGE	NO.	%
0-14	48	13
15-24	14	3.8
25-44	24	6.5
45-64	54	14.7
65+	228	62

*Data largely based on mode. Mode is the value that appears most frequently in a given set of data. For more information visit <https://profile.id.com.au/redland>

Ormiston

Employment Snapshot 2021 Census




THE LABOUR FORCE

Labour force		Participation rate	
2,922	3,219	60.8%	60.4%
ABS2016	ABS2021	ABS2016	ABS2021

Ormiston's labour force increased from 2,922 in 2016 to 3,219 in 2021 and the participation rate declined by 0.4%. While the unemployment rate declined from 5.2% to 3.9% between the two Census periods, the proportion of Ormiston residents working full time declined by 2.5%.

EMPLOYMENT STATUS

People who reported being in the labour force, aged 15 years and over

	2016	2021
 Worked full-time	58.7%	56.2%
 Worked part-time	31.7%	31.3%
 Unemployed	5.2%	3.9%

UNPAID WORK AND EDUCATION

Disability assistance		Volunteer	
11.7%	13.4%	21.9%	16.2%
ABS2016	ABS2021	ABS2016	ABS2021

EDUCATION ATTAINMENT

	2016	2021
Bachelor Degree and above	37.5%	42%
Advance Diploma and Diploma level	19.1%	19.3%
Vocational/Trades (Certificate I-IV)	28.1%	26.7%

Unpaid care is an important contributor to economic and community well-being. In Ormiston, the percentage of residents aged 15 and over providing disability assistance rose from 11.7% to 13.4%, while volunteers declined by 5.7%.

Health Care and Social Assistance remained the top employing industry, followed by Retail Trade and Education and Training. The COVID-19 pandemic and the acceptance of flexible work arrangements resulted in a 13.7% increase in people working from home.

TOP 3 FIELDS OF STUDY IN 2021

	No.	% change since 2016
Management and Commerce	800	18.25%
Engineering and Related Technologies	539	7.79%
Health	392	7.91%

TYPE OF JOBS AND TRAVEL TO WORK




TOP 3 INDUSTRIES OF EMPLOYMENT IN 2021

	No.	% change since 2016
Health Care and Social Assistance	467	27.6%
Retail Trade	314	14.2%
Education and Training	291	15%

TOP 3 OCCUPATIONS IN 2021

	No.	% change since 2016
Professionals	768	0.8%
Managers	537	1.6%
Clerical and Administrative Workers	473	-0.4%

METHOD OF TRAVEL TO WORK

	No.	% change since 2016
 Car	1,923	-8.8%
 Public Transport	125	-5%
 Worked from home	635	13.7%