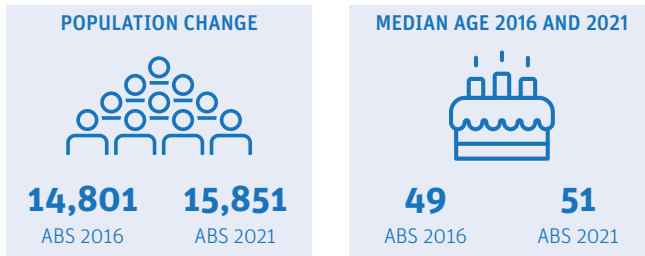


Cleveland

Demographic snapshot 2021 Census

How has Cleveland changed since the last Census (2016)

Population and age Breakdown

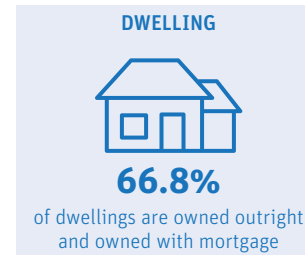
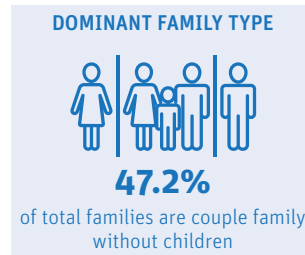


Cleveland had a population of 15,851 in 2021, 1,050 more residents compared to the previous Census. The suburb had a relatively older demographic with median age at 51, nine (9) years more than the Redland City's median age of 43. Cleveland has an ageing profile with the proportion of 65 and over growing from 26% in 2016 to 30% in 2021.

Who is a typical Cleveland resident*

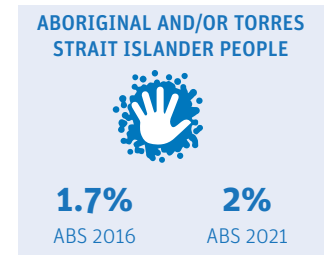
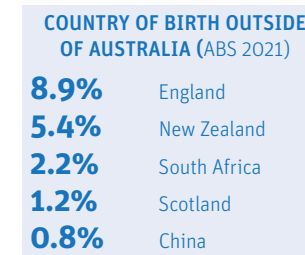


Family and dwelling



Couple family without children continued to be the dominant family type in Cleveland, with the proportion growing from 45% in 2016 to 47% in 2021. Similar to 2016 Census, family households (67%) continued to be the main household type in 2021.

Characteristics



A large proportion of Cleveland residents were born in Australia (67%), and 2% of residents identified as Aboriginal and/or Torres Strait Islander. 36% of residents reported having one or more long term health conditions. More than a thousand residents (1,345 or 9% of total population) reported requiring assistance with core activities due to a disability, 67% of those were in the 65 and over age cohort.

AGE BREAKDOWN		
2016	AGE	2021
14.20%	0-14	13.20%
60.00%	15-64	56.50%
25.80%	65+	30.30%

	HOUSEHOLD COMPOSITION			MEDIANS			
	2016	2021	Change	2016	2021	Change	
Family	67.30%	66.90%	▼	Rent (weekly)	\$375	\$400	▲
Single or lone person	30.10%	31.00%	▲	Mortgage (monthly)	\$1950	\$2000	▲
Group	2.60%	2.10%	▼	House income (weekly)	\$1275	\$1430	▲

LONG-TERM HEALTH CONDITION	
13.6%	Arthritis
10.6%	Other long-term
10.5%	Mental health
8.6%	Asthma
7.2%	Heart Disease

CORE ACTIVITY NEED FOR ASSISTANCE BY AGE		
AGE	NO.	%
0-14	109	8.1
15-24	46	3.4
25-44	108	8
45-64	177	13.2
65+	905	67.3

*Data largely based on mode. Mode is the value that appears most frequently in a given set of data. For more information visit <https://profile.id.com.au/redland>

Cleveland

Employment Snapshot 2021 Census




THE LABOUR FORCE

Labour force		Participation rate	
7,014	7,319	55.2%	53.2%
ABS2016	ABS2021	ABS2016	ABS2021

Cleveland's labour force increased from 7,014 in 2016 to 7,319 in 2021 and the participation rate declined by 2.0%. While the unemployment rate declined from 6.6% to 4.7% between the two Census periods, the proportion of Cleveland residents working full time declined by 2.9%.

EMPLOYMENT STATUS

People who reported being in the labour force, aged 15 years and over

	2016	2021
 Worked full-time	57.9%	55%
 Worked part-time	31.7%	32%
 Unemployed	6%	4.7%

UNPAID WORK AND EDUCATION

Disability assistance		Volunteer	
11.6%	11.8%	18.7%	14.2%
ABS2016	ABS2021	ABS2016	ABS2021

EDUCATION ATTAINMENT

	2016	2021
Bachelor Degree and above	28.5%	31.6%
Advance Diploma and Diploma level	17.4%	18.7%
Vocational/Trades (Certificate I-IV)	32.7%	32.5%

Unpaid care is an important contributor to economic and community well-being. In Cleveland, the percentage of residents aged 15 and over providing disability assistance rose from 11.6% to 11.8%, while volunteers declined by 4.5%.

Health Care and Social Assistance remained the top employing industry, followed by Construction and Retail Trade. The COVID-19 pandemic and the acceptance of flexible work arrangements resulted in a 10% increase in people working from home.

TOP 3 FIELDS OF STUDY IN 2021

	No.	% change since 2016
Management and Commerce	1,755	17.89%
Engineering and Related Technologies	1,352	4.07%
Society and Culture	922	15.4%

TYPE OF JOBS AND TRAVEL TO WORK



TOP 3 INDUSTRIES OF EMPLOYMENT IN 2021

	No.	% change since 2016
Health Care and Social Assistance	1,069	26.5%
Construction	808	4.1%
Retail Trade	652	3%

TOP 3 OCCUPATIONS IN 2021

	No.	% change since 2016
Professionals	1,368	0.6%
Clerical and Administrative Workers	1,099	0.5%
Managers	1,055	-0.5%

METHOD OF TRAVEL TO WORK

	No.	% change since 2016
 Car	4,595	-6.7%
 Public Transport	253	-2.9%
 Worked from home	1,108	10%