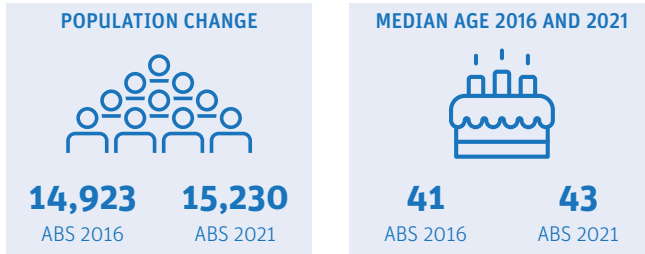


Birkdale

Demographic snapshot 2021 Census

How has Birkdale changed since the last Census (2016)

Population and age Breakdown



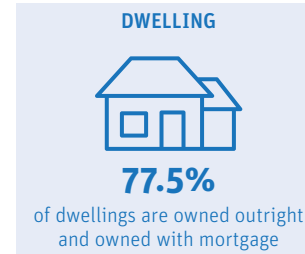
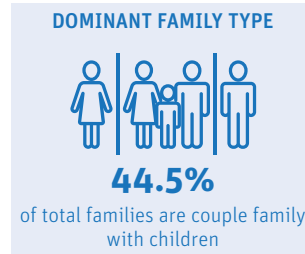
Birkdale had a population of 15,230 in 2021 which was an increase of 307 residents (or 2.1%) since 2016. Median age was 43 which was similar to Redland City. The suburb has an ageing profile with the proportion of 65 and over growing from 18% in 2016 to 21% in 2021.

AGE BREAKDOWN		
2016	AGE	2021
19.00%	0-14	18.00%
63.40%	15-64	60.60%
17.50%	65+	21.40%

Who is a typical Birkdale resident*



Family and dwelling

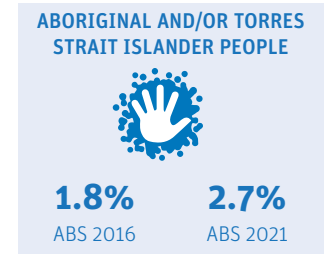
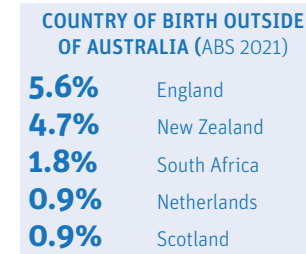


Couple family with children continued to be the dominant family type in Birkdale however the proportion had declined from 48% in 2016 to 44% in 2021. While family households continued to be the main household type, the proportion of lone household grew from 18% in 2016 to 20% in 2021.

	HOUSEHOLD COMPOSITION		
	2016	2021	Change
Family	79.40%	77.80%	▼
Single or lone person	18.30%	20.20%	▲
Group	2.40%	2.00%	▼

	MEDIANS		
	2016	2021	Change
Rent (weekly)	\$400	\$440	▲
Mortgage (monthly)	\$1989	\$2000	▲
House income (weekly)	\$1705	\$1944	▲

Characteristics



A large proportion of Birkdale residents were born in Australia (75%), and 2.7% of residents identified as Aboriginal and/or Torres Strait Islander. Almost 1 in 3 residents (32%) reported having one or more long term health conditions. More than a thousand residents (1027) reported needing assistance with core activities, with a majority (57%) of those needing assistance in the 65 and over age cohort.

LONG-TERM HEALTH CONDITION	
10.4%	Other long-term
9.9%	Mental health
9.8%	Arthritis
8.8%	Asthma
5.3%	Heart Disease

CORE ACTIVITY NEED FOR ASSISTANCE BY AGE		
AGE	NO.	%
0-14	123	12.1
15-24	62	6.1
25-44	91	9
45-64	158	15.6
65+	582	57.3

*Data largely based on mode. Mode is the value that appears most frequently in a given set of data. For more information visit <https://profile.id.com.au/redland>

Birkdale

Employment Snapshot 2021 Census




THE LABOUR FORCE

Labour force		Participation rate	
7,790	7,782	64.5%	62.3%
ABS2016	ABS2021	ABS2016	ABS2021

Birkdale's labour force declined from 7,790 in 2016 to 7,782 in 2021 and the participation rate declined by 2.2%. While the unemployment rate declined from 5.6% to 4.1% between the two Census periods, the proportion of Birkdale residents working full time declined by 2.5%.

EMPLOYMENT STATUS

People who reported being in the labour force, aged 15 years and over

	2016	2021
 Worked full-time	60.3%	57.8%
 Worked part-time	29.8%	29.4%
 Unemployed	5.6%	4.1%

UNPAID WORK AND EDUCATION

Disability assistance		Volunteer	
11.7%	13.1%	19.3%	14.2%
ABS2016	ABS2021	ABS2016	ABS2021

EDUCATION ATTAINMENT

	2016	2021
Bachelor Degree and above	27.6%	32%
Advance Diploma and Diploma level	17.4%	16.9%
Vocational/Trades (Certificate I-IV)	36.8%	36.9%

Unpaid care is an important contributor to economic and community well-being. In Birkdale, the percentage of residents aged 15 and over providing disability assistance rose from 11.7% to 13.1%, while volunteers declined by 5.1%.

Health Care and Social Assistance remained the top employing industry, followed by Construction and Retail Trade. The COVID-19 pandemic and the acceptance of flexible work arrangements resulted in a 11.4% increase in people working from home.

TOP 3 FIELDS OF STUDY IN 2021

	No.	% change since 2016
Management and Commerce	1,500	12.93%
Engineering and Related Technologies	1,354	-1.03%
Society and Culture	828	12.2%

TYPE OF JOBS AND TRAVEL TO WORK

TOP 3 INDUSTRIES OF EMPLOYMENT IN 2021

	No.	% change since 2016
Health Care and Social Assistance	1,076	14.1%
Construction	881	6.3%
Retail Trade	712	-0.3%

TOP 3 OCCUPATIONS IN 2021

	No.	% change since 2016
Professionals	1,476	2.1%
Clerical and Administrative Workers	1,160	-1.1%
Technicians and Trades Workers	1,119	-1.1%

METHOD OF TRAVEL TO WORK

	No.	% change since 2016
 Car	4,942	-8.7%
 Public Transport	284	-4%
 Worked from home	1,216	11.4%