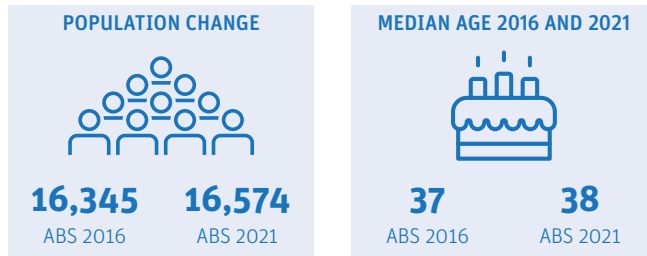


Alexandra Hills

Demographic snapshot 2021 Census

How has Alexandra Hills changed since the last Census (2016)

Population and age Breakdown



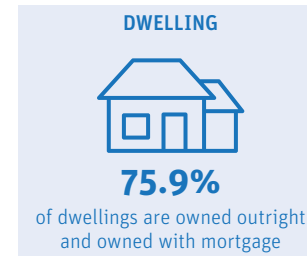
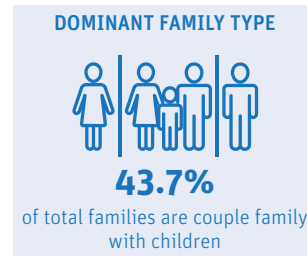
Alexandra Hills experienced a modest increase in population between 2016-2021, growing from 16,345 to 16,574 persons (or 1.4% growth). The suburb had a slightly younger demographic with median age of residents at 38 years old compared to 43 for Redland City. Over the last five years, the age profile shifted towards older people (65 and over) with the proportion to total population increasing from 13% in 2016 to 16% in 2021.

AGE BREAKDOWN		
2016	AGE	2021
20.10%	0-14	19.50%
67.10%	15-64	64.60%
12.80%	65+	15.90%

Who is a typical Alexandra Hills resident*



Family and dwelling

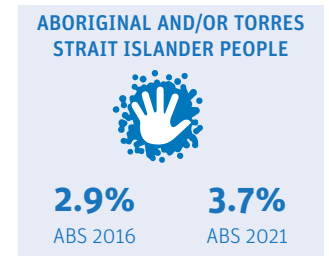
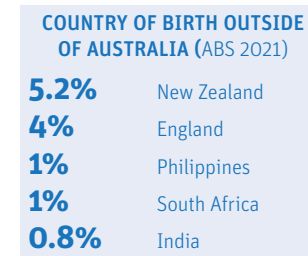


Couples with children continued to be the dominant family type in Alexandra Hills but had slightly declined since the previous Census period (from 46% to 44%). In 2021, family households continued to be the dominant household composition in Alexandra Hills. However, lone person households experienced a significant change between the Census periods as it increased by 12%.

	HOUSEHOLD COMPOSITION		
	2016	2021	Change
Family	79.56%	78.70%	▼
Single or lone person	17.70%	18.90%	▲
Group	2.80%	2.40%	▼

	MEDIANS		
	2016	2021	Change
Rent (weekly)	\$375	\$400	▲
Mortgage (monthly)	\$1820	\$1829	▲
House income (weekly)	\$1600	\$1837	▲

Characteristics



Majority of residents were born in Australia (77%), and 3.7% of residents identified as Aboriginal and/or Torres Strait Islander. Almost 1 in 3 residents (32%) reported having one or more long term health conditions. Almost a thousand residents (990) reported requiring assistance with core activities due to a disability. About 41% of residents who reported the need for assistance were older people (65+).

LONG-TERM HEALTH CONDITION	
11%	Mental health
10%	Asthma
9.2%	Other long-term
9.1%	Arthritis
5.2%	Diabetes

CORE ACTIVITY NEED FOR ASSISTANCE BY AGE		
AGE	NO.	%
0-14	166	16.8
15-24	84	8.5
25-44	116	11.7
45-64	217	21.9
65+	407	41.1

*Data largely based on mode. Mode is the value that appears most frequently in a given set of data. For more information visit <https://profile.id.com.au/redland>

Alexandra Hills

Employment Snapshot 2021 Census




THE LABOUR FORCE

Labour force		Participation rate	
8,876	8,826	67.9%	66.2%
ABS2016	ABS2021	ABS2016	ABS2021

Alexandra Hills' labour force declined from 8,876 in 2016 to 8,826 in 2021 and the participation rate declined by 1.7%. While the unemployment rate declined from 6.4% to 4.5% between the two Census periods, the proportion of Alexandra Hills residents working full time declined by 2.3%.

EMPLOYMENT STATUS

People who reported being in the labour force, aged 15 years and over

	2016	2021
 Worked full-time	59.4%	57.1%
 Worked part-time	29.5%	29.3%
 Unemployed	6.4%	4.5%

UNPAID WORK AND EDUCATION

Disability assistance		Volunteer	
11.7%	12.8%	16.6%	11.7%
ABS2016	ABS2021	ABS2016	ABS2021

EDUCATION ATTAINMENT

	2016	2021
Bachelor Degree and above	22.2%	25.4%
Advance Diploma and Diploma level	17%	17.9%
Vocational/Trades (Certificate I-IV)	36.9%	42.7%

Unpaid care is an important contributor to economic and community well-being. In Alexandra Hills, the percentage of residents aged 15 and over providing disability assistance rose from 11.7% to 12.8%, while volunteers declined by 4.9%.

Health Care and Social Assistance remained the top employing industry, followed by Construction and Retail Trade. The COVID-19 pandemic and the acceptance of flexible work arrangements resulted in a 8.6% increase in people working from home.

TOP 3 FIELDS OF STUDY IN 2021

	No.	% change since 2016
Management and Commerce	1,482	9.45%
Engineering and Related Technologies	1,451	0.9%
Society and Culture	987	11.45%

TYPE OF JOBS AND TRAVEL TO WORK




TOP 3 INDUSTRIES OF EMPLOYMENT IN 2021

	No.	% change since 2016
Health Care and Social Assistance	1,296	12.1%
Construction	1,057	6.1%
Retail Trade	894	-1.7%

TOP 3 OCCUPATIONS IN 2021

	No.	% change since 2016
Technicians and Trades Workers	1,466	-0.5%
Professionals	1,319	1.1%
Clerical and Administrative Workers	1,229	-1.5%

METHOD OF TRAVEL TO WORK

	No.	% change since 2016
 Car	5,932	-7.4%
 Public Transport	263	-3.1%
 Worked from home	1,023	8.6%