



News from your Local Councillor

Cr Julie Talty

Council funds trial of vaccine for Redlands' koalas

Council is taking positive steps towards helping our koalas by financially supporting a plan to target the cause of one of the biggest single killers - the deadly chlamydia virus.

A University of Sunshine Coast chlamydia vaccination trial is to be extended here. Researchers will use specially trained rescue dogs to track koalas. This will provide real and verifiable data and support further efforts to understand the koala in Redland. It is an important step towards a more scientific and targeted approach to koala protection.

Mayor Karen Williams has met with Professor Peter Timms from the University of Sunshine Coast, who developed the chlamydia vaccine for

koalas, to formalise the role of the Redlands in the research. Professor Timms reports encouraging results from the trials of the vaccine so it makes good sense to extend it here.

To that end, Council resolved to contribute up to \$30,000 from the environmental reserve to support this targeted approach to koala protection. The university will provide a scholarship for a PhD student to do laboratory work.

As part of the project, koala detection dogs will be used to locate scats, which will be tested for signs of chlamydia.

The researchers believe that the future of koala conservation will rely on the ability to non-invasively assess koala presence and health, so key



koala populations - or "green islands" - can be identified. During the trial, researchers will vaccinate koalas from the Redlands taken into care before they are returned to the wild.

Your feedback sought on plan for Men's Shed

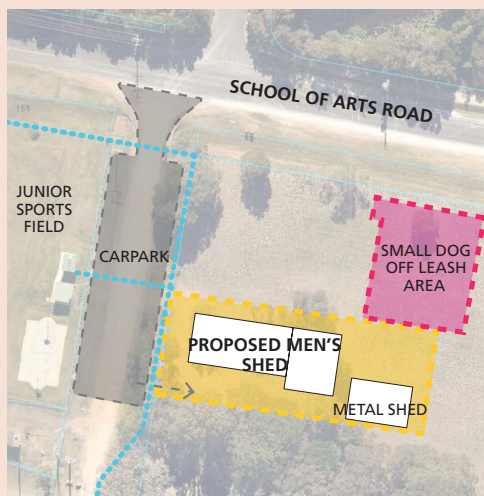
For some time Council has been seeking to make an area available to the local Redland Bay Men's Shed group for a facility to support the men of southern Redlands.

Men's Sheds are known to provide respite from isolation or depression, as well as being a source of new skills. They provide an invaluable service to the community through joint projects and community service.

An area of land off Donald Road (opposite the half basketball court), has recently been identified as an area that may suit this purpose. This area, pictured, will form part of a dedicated public recreation and open space area. The Men's Shed would be quite close to the proposed site of the new dog off-leash area.

The closed dirt section of Donald Road, off School of Arts Road, can be turned into a car park to service the Men's Shed as well as the park.

Your views are very important to us. As part of the process of assessing if this is a suitable site, we are seeking to inform you of this plan for your neighbourhood and asking for your thoughts and feedback. If supported by the community and approved both by the State Government and Council, the Men's Shed group would be offered a lease.



City Plan update

Redland City Council reached a significant milestone in the State Government-prescribed planning process when it submitted the draft of its new City Plan for State Interest Review in November last year.

Subsequently, Council has made a number of minor amendments and resubmitted them for the Minister's approval. Once approval is received, Council will take the proposed City Plan to public consultation, giving the community its chance to both review the scheme and provide formal feedback on it through a submission process.

This process will be widely advertised and include community forums, mailouts, interactive online engagement tools, displays, website and social media information and meet-the-planner sessions.



Better at providing the basics

Council roads in Redland Bay and surrounds have been undergoing transformation through our reviewed road sealing and upgrades programmes.

Local residents will know that Orchard Road and German Church Road have now been sealed with bitumen. Sealing dirt roads improves our transport network, reduces dust for residents and is especially important for those on tank water. This also significantly improves the quality of the water being discharged into our Bay and waterways.

Plans for the continuation and upgrades of Collins and School of Arts roads are well under way, with budget allocations for works to commence on the ground this year. Upgrades of the intersections

of School of Arts Road with Kalmia Drive and Viola Drive are being developed and consideration is being given to closing or limiting the intersection with Watsonia Street to improve safety and traffic flows. Two pedestrian refuges are planned for School of Arts Road, one at the eastern end between the two parks near the proposed dog off-lead area, and one at the other end to facilitate access to bus stops and the school. The dogleg that intersects German Church Road will not be included in this section of works and is planned for another phase in the program.

Work is also under way to improve footpath connections along Collins Road, into School of Arts. Over the longer term, the bicycle and walking paths will connect from Bankswood Street through to Weinam Creek.

ROAD AHEAD: Council crew members Dallas, Dylan and Luke at Orchard Road. Along with all our road crews, they are working hard to improve our network.



At Victoria Point, the western end of Bunker Road - near the intersections with Brookvale Drive and Estuary Avenue - is undergoing testing to ascertain what level of works are needed to bring it up to standard.

Hopefully, the work will be programmed for this year.

Building and supporting our community

With the last weekend in November came the Mt Cotton Community Christmas Party, which has now been running for 15 years. Many locals turned out again to enjoy the spirit of the season and the company of neighbours in the beautiful surrounds of our park.

I am very grateful to the local Mt Cotton Community Fellowship and, in particular, Paster Neale Collier and Mrs Deb Wagner, their families and the members of the C4 Youth who worked so hard to put on the event. We have been very fortunate over many years to have the unwavering financial support of Silkwood Estates and Villaworld, which along with a grant from Council funded this fabulous event. Work has already begun on our next community gathering.



GREAT WORK: Mt Cotton Scouts worked tirelessly to supply food and drinks to the thousands who turned out for the Mt Cotton Christmas Party. This was doubly pleasing as a Councillor Small Grant supported the Scouts' fundraising for their new barbeque.

The CAGE creates a good environment

Since arriving in the Redlands in 2001, The CAGE Youth Foundation continues to make a difference to the lives of young people, our future leaders, and their families

It is one of the Redlands' leading youth and community engagement services, coordinating a range of major events, workshops, life skills, personal development, counselling, intervention and crisis care.

It is now looking to expand on German Church Road, Redland Bay, and would greatly appreciate any support as it moves to buy the land to ensure its future. As a self-funded charity, all donations over \$2 are tax deductible.

If you would like to partner with The CAGE and make a donation, you will be helping it to help others in the City. For more information, go to www.thecage.info or call 3829 2644.

Keeping pesky mozzies at bay

The wet start to the year has created ideal conditions for mosquitoes, which can present a significant public health risk. Council's mosquito management crew has been ever vigilant, conducting surveys and ground and aerial treatments but it is important that as a community we stay on top of the issue. Residents can help by regularly checking there's no unnecessary water where mozzies can breed around homes.

Keep in touch

Please continue to stay in touch. Email me at julie.talty@redland.qld.gov.au or call 0418 218 847 if I can be of assistance.

You can also keep up to date at

 [facebook.com/CrJulieTalty](https://www.facebook.com/CrJulieTalty)

Cr Julie Talty
Division 6