



News from your Local Councillor

Cr Julie Talty



Getting the DV message across

Council is throwing its support behind WAVSS Across the Redlands, the first domestic violence support service to operate in the Redlands for 20 years.

The not-for-profit organisation, which launched its Redlands operations last September, offers free information, support and counselling, predominantly for women and children experiencing domestic and family violence.

To coincide with Domestic and Family Violence Prevention Month in May, signs were posted on Council bus shelters, waste collection trucks and other vehicles to send a clear message that domestic and family violence will not be tolerated.

As an organisation, we've also introduced a 10-day leave allowance for Council staff members who might be affected by domestic violence.

On behalf of WAVSS, we're also including a bumper sticker with this newsletter to help kick off their "Non-violence is contagious ... give it to your friends!" campaign.



For information or to seek support, visit www.wavss.org.

The service offers a range of support, including free information, court support, counselling, crisis response and perpetrator intervention programs.

Dear resident of Division 6

Thank you for the honour of re-electing me as your Councillor.

With the early part of the term involving induction sessions and updates on a wide variety of Council issues, Councillors are now focussed on the 2016-17 Budget, which is expected to be finalised on 14 July.

With three new Councillors, we also have a commitment to work together in the best interests of the whole of the Redlands. We can look forward to some great initiatives that will help improve the quality of life in our area.

Division 6 does face some infrastructure and other challenges over the next four years and finding innovative ways to overcome these will require a "whole of council" approach and support from other levels of government.

In Redland Bay, Mt Cotton and on Boundary Road, peak-period traffic is constrained where Council roads meet State roads. Council will be challenging the State Government to work with us to resolve congestion.

Roads are firmly on the agenda and, in Division 6, the Southern Road Sealing Program will continue along with continuation of the works on School of Arts and Collins roads this year. The design of safety upgrades

required for the intersection of School of Arts and German Church roads is also underway, while issues along Valley Way include pedestrian access and traffic management for the intersection of Valley Way and Mount Cotton Road. Footpath connections and alignments are planned for Bunker Road in Victoria Point and across our community.

Residents and road users in Victoria Point will have seen the works underway at Kingfisher Road, which were needed urgently following damage to a major culvert. There will be further planning for this section under our Local Government Infrastructure Plan.

I also will continue to work with Cr Mark Edwards on issues affecting Redland Bay, including challenges such as the Weinam Creek redevelopment and vital infrastructure needs.

I look forward to Councillors working together to address areas of greatest need and opportunity. I am sure we will see great results.

Cr Julie Talty
Division 6



YOUR COUNCIL: Back, from left - Cr Paul Gleeson, Cr Peter Mitchell, Cr Paul Bishop, Cr Murray Elliott, Cr Lance Hewlett, Cr Paul Golle and Cr Mark Edwards. Front, from left: Cr Tracey Huges, Deputy Mayor Wendy Boglary, Mayor Karen Williams and myself.



More wildlife volunteers needed

The Redlands' after-hours wildlife ambulance service, co-ordinated by Council, is always seeking volunteers to rescue and transport sick and injured wildlife.

Inductions are held as required, so please contact 3824 8611 or email lisa.bailey@redland.qld.gov.au if you can help or would like more information.

Most of our native animals are nocturnal, so it's vital that we are able to transport sick or injured wildlife for veterinary care between 5pm and 8am, when incidents are more likely to happen.

Council supplies a fully-equipped vehicle and covers running costs, including fuel and equipment for volunteers, who work in teams of three and are rostered on-call for a seven day period once every five-to-six weeks.

We currently have 15 trained ambulance volunteers, with the service answering more than 2400 calls last year.

All volunteers must be over the age of 18, hold a current driver's licence and live in the Redlands. No prior experience is needed to join this community volunteer program and full training is provided.



Great new community play areas coming our way

Plans are progressing for the new Mt Cotton Skate Park. Feedback from the second round of user consultation is now under consideration and a final design will be available soon. For more information, go to yoursay.redland.qld.gov.au/mt-cotton-skatepark.

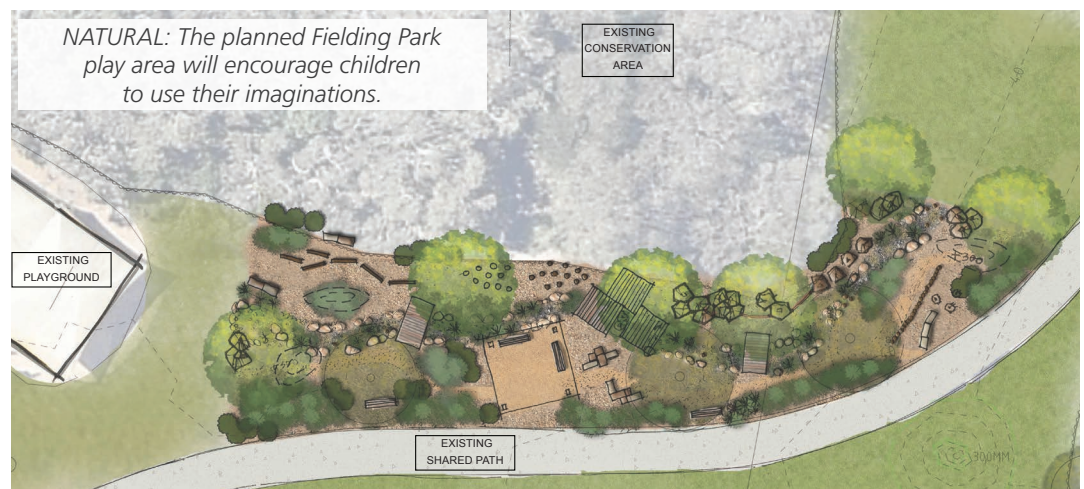
Plans for the Teen Hangout area planned for the corner of Donald and School of

Arts roads, Redland Bay, are also being finalised based on community feedback. Construction is planned for early next year.

Meanwhile a new concept in nature play is being incorporated into the Fielding Park play area. This nature play area is a landscaped natural play zone designed to encourage children to interact with the

environment. The design includes a recreated dry creek bed, stepping stones paths and places to use their imaginations in play.

Work also continues on the Eprapah Parklands masterplanning in Victoria Point, planning for Mt Cotton Park and the Weinam Creek parklands. Residents will be kept up to date on each of these exciting developments.



PLAYTIME: The planned Mt Cotton skate park and Redland Bay Teen Hangout.

Weinam Creek update

Council has agreed to give the Walker Group another three months to complete its proposal for the Weinam Creek Priority Development Area. The extension will enable Walker's proposal to accommodate feedback provided by the new Council, particularly relating to parking and strengthening public access to the foreshore.

It is important the community remains patient while necessary steps occur to make this multi-million dollar project a reality.

Once the Request for Proposal phase is completed on 1 August, a panel of Council and State Government representatives will evaluate Walker Group's proposal.

Meanwhile, commuter car parking has spread beyond the transport precinct and affecting nearby neighbourhoods as well as the shopping village. Interim action will be needed to ease the pressures until the redevelopment is complete.

