



News from your Local Councillor

Cr Tracey Huges



Parks decisions a win for residents

The decision on the positioning of public amenities in Birkdale's Bailey Road Park is a win for residents.

After consulting with locals, the toilet block will now be positioned directly behind the basketball court where it will have minimal impact on those who live in the area.

This is a result for residents and

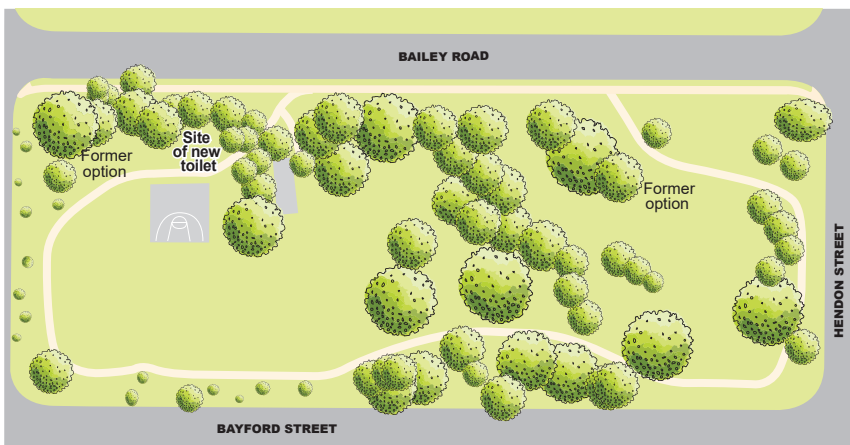
I thank everyone involved for helping to get to a satisfactory resolution.

The new amenity is expected to be installed in time for the holiday break.

Meanwhile, Montgomery Drive Park at Wellington Point is set for an exciting transformation, with new play equipment being installed that is sure to be a hit with local kids.

The park is getting a wonderfully challenging play unit suitable for ages 2-13 years, as well as a three-bay swing.

The play unit promises to provide youngsters with hours of healthy fun and activity. Weather willing, the work should be completed by the end of November.



LEFT: The new location of the Bailey Road Park toilets.
ABOVE: The play unit for Montgomery Drive Park.

Helping community

I was pleased to be able to assist worthy groups important to residents with small grants recently. All up, \$3550 has been distributed to organisations including: Old School House Gallery \$350, Redlands Netball Association \$200 and Muddies Cricket and Recreational Club \$3000. These organisations and their members provide valuable services to local residents.

Catch up for a chat

- November**
- Saturday 4th, 9-11am** Alexandra Hills Shopping Centre
 - Friday 17th, 3-4.30pm** Bluebell St, Alexandra Hills Foodworks
 - Saturday 18th, 9-11am** Wellington Point Horizon Shopping Centre
- December**
- Saturday 2nd, 9-11am** Alexandra Hills Shopping Centre
 - Friday 8th, 3-4.30pm** Bluebell St, Alexandra Hills Foodworks

Special guests welcomed

Opal the cockatiel and Jasper the puppy had a very warm reception when they visited residents at Sylvan Woods Aged Care recently to say "hi", pictured. The visit was part of a morning tea organised to deliver blankets to guests at the Redland Animal Shelter. The prospective pets at Council's shelter were not the only

beneficiaries on the day, with baskets of goodies also given to the Redland Community Centre to provide to those in need. Sylvan Woods Aged Care does a wonderful job of supporting projects that benefit the community. Their latest event was a huge success, helping to forge friendships with both the animal shelter and Redland Community Centre.





Wastewater treatment upgrade



The new Thorneside wastewater treatment plant was commissioned in August.

The Thorneside wastewater treatment plant works has recently undergone a major upgrade with Council and the State Government investing \$3.6 million to replace old and ineffective equipment and reduce odour emissions for local residents.

The State Government generously provided a grant for 56 per cent of the project costs.

The plant currently services an equivalent population of 42,600 in Thorneside, Birkdale, Ormiston and Wellington Point and will cater for expected growth in the catchment area.

Works were designed and constructed by Ipswich contractor Aquatec Maxcon, a leading provider in water and wastewater treatment processes. They have successfully utilised their own innovative self-cleaning band screens as part of the upgrade.

The new inlet structure is now operating to its design expectations. It is expected there will be an official grant acknowledgement and opening in the near future.

What are the benefits?

- Large reductions in non-biodegradable solids entering Tingalpa Creek and Moreton Bay.
- Significant reduction in odour from the wastewater treatment plant.
- Improved wet weather effluent performance.



New inlet structure with odour collection pipework.

Think before you flush

If you thought it was safe to flush your “flushable” wipes and cleaning cloths, think again. The truth is that many of these products take a very long time to break down. They not only clog your drains but create some seriously messy and expensive blockages at our treatment plants and pump stations too.

In 2016, *Choice Magazine* launched its Flush Busters campaign, which urges companies to do away with dodgy claims about flushable wipes.

Council is conducting ongoing communications with our customers to ensure that wet wipes are not flushed.



Get in the festive spirit

Redland City Council has an awesome community Christmas celebration planned for this year.

The first major event will be the lighting of the city’s Christmas tree in Cleveland’s Library Square, on the corner of Bloomfield and Middle streets, from 5pm-7.30pm on Friday, 1 December.

You are all welcome to come along to celebrate the beginning of the festive season, with a heap of free Christmas fun and entertainment organised.

The event will include the Twilight Makers Market, “Christmas on Bloomfield”, from 4pm.

Then Christmas by Starlight, the Redlands’ biggest free community event, returns to Norm Price Park - Redlands Showgrounds in the heart of the city on Saturday 16 December.

From 3pm-8pm, the park at Long Street, Cleveland, will host a wide range of free activities, including a children’s show, traditional Christmas carols and fireworks. As usual, there will be a wide selection of food vendors.

Keep an eye on council’s Facebook page and our website at www.redland.qld.gov.au/cbs for updates.



Have a great Christmas

I wish everyone a very happy and, above all, safe Christmas and New year and look forward to working with you in 2018.

T. Hughes.

Cr Tracey Hughes
Division 8