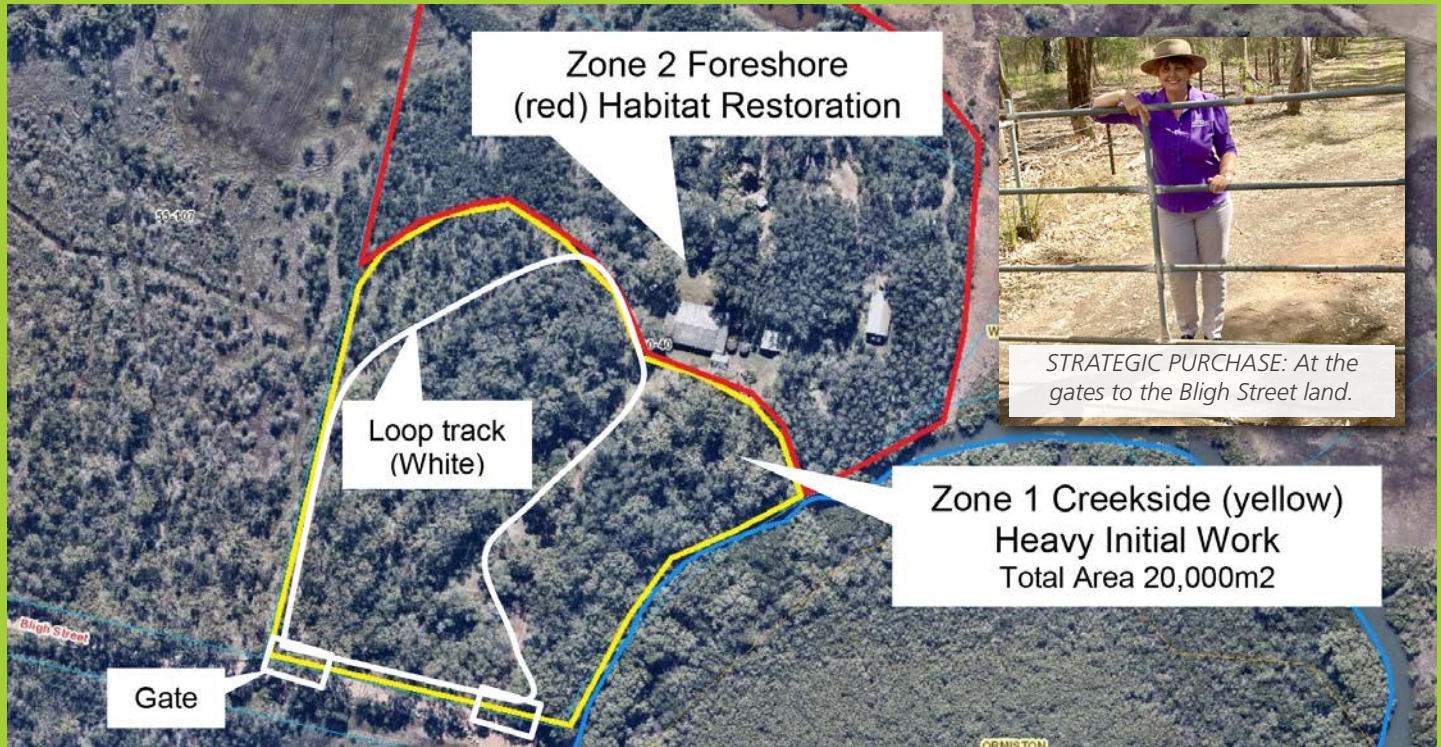




News from your Local Councillor

Cr Wendy Bogleary



Boost for the environment and local economy

I am very excited with a recent strategic purchase by Redland City Council of 4.45ha of land in Bligh Street, Wellington Point, above.

This block was the last remaining private land in the internationally recognised RAMSAR wetlands known as Geoff Skinner Reserve, at the northern end of the city's main spinal environmental corridor.

The environmental significance of this area is evident with valuable salt pans, internationally recognised wetlands for migratory birds and habitat for koalas, along with other bird and animal species. Swamp wallabies are also regularly seen in the area.

Council is planning to enhance our understanding of this important area with interpretive signage and a better located bird-viewing

platform, as well as a trail to explore away from the hustle and bustle of our busy lives.

This area will attract tourists to our area which will boost our local economy so, for many reasons, I am delighted and looking forward to seeing the area realise its environmental potential after Council has ensured the site is safe for public access.

Best wishes to all

With Christmas fast approaching, I would like to thank all the wonderful volunteers from across our division who generously contribute so much of their time to ensuring the quality of our Redlands Coast community throughout

the year. We are indeed greatly indebted to each and every one of you.

I also wish you all a safe and merry Christmas season and hope that you get to enjoy time with your family and friends.

Merry Christmas,

Cr Wendy Bogleary
Division 1

For daily updates follow me
[councillorwendybogleary](https://www.facebook.com/councillorwendybogleary)



Healthy communities - park upgrades to encourage family outings

The response to the recent upgrade of Three Paddocks Park has been overwhelmingly positive.

The park now has exercise equipment, new cricket nets, goal posts, seating, shelters and a water tap in the dog off-leash area and an exciting new playground.

The next stage of works planned for Three Paddocks Park, which is expected to start early next year, includes a new amenities block and a carpark adjacent to Birkdale Road.

All these improvements will enhance use of your community park.

Goodall Street Park's play equipment is also being renewed with an expansion of the playground. Council is aiming to complete this project by Christmas, however construction dates were still to be confirmed at the time of writing.

Meanwhile, shade has been erected over the exercise equipment at Wellington Point Reserve and the exercise equipment at Raby Esplanade Park, Ormiston, is to be installed early next year.

Over the years, the community working with Council identified a need for a new kayak/canoe launching pontoon at Raby Bay Esplanade Park, Ormiston. This

exciting new park feature, which enhances access to the Redlands Coast, is now open and operating. I hear a number of kayaks and canoes have now been purchased within our community!

The BMX track proposed for EGW Wood Sportsground is in the final design stages and I know there are many local children waiting for this one. While the final shape, size and features are still being determined, this will surely be an exciting addition to the local community.

There are other items on my priority list which I am working to have included in next year's budget.



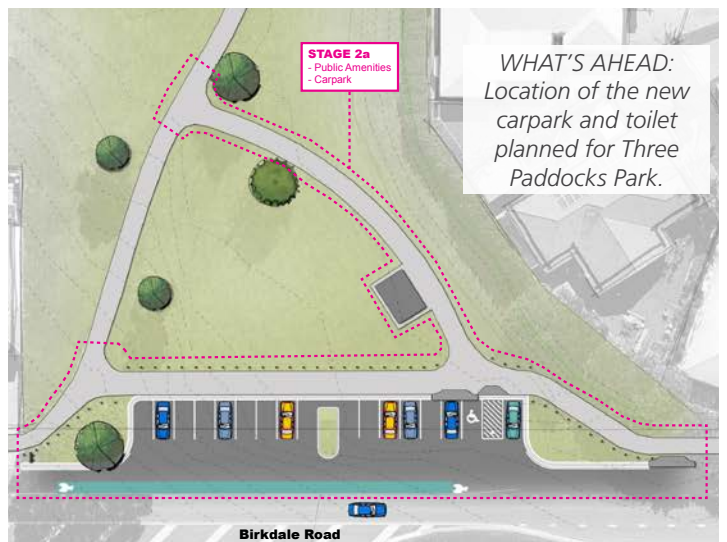
CELEBRATION: Three Paddocks Park has been transformed into a wonderful space for local families to relax, play and enjoy our great community.



IN THE PIPELINE : The BMX pump track proposed for EGW Wood Sportsground is sure to be a hit with local youngsters seeking some outdoors action.



FUN TIMES AHEAD: An example of the play structure proposed for Goodall Street Park.



WHAT'S AHEAD: Location of the new carpark and toilet planned for Three Paddocks Park.

Support local to keep local

You may have noticed that work has started on our Wellington Point Village Green.

This exciting project will really boost our village's bayside charm, complementing the broader Wellington Point streetscape improvements that have also started.

The village really is one of the finest spots in Redlands Coast and is becoming an increasingly popular dining and visitor destination.

Dancing in the Streets will return on the new dance area at the Village Green, so practice those steps!

Many Redlands Coast businesses are owned and operated by local families who care and participate in our community.

I see endless occasions throughout the year when a local business assists a charity or a school event. This is just one benefit of supporting our Redlands business community. They also employ local people and often give our children their first jobs.

With Christmas upon us, I would like to encourage and challenge everyone to **have a "Redlands Christmas"** by buying all gifts and supplies within Redlands Coast. So let's give our economy a boost and eat, drink and buy locally.

Making our local villages inviting spaces which are visitor friendly is important to our economic future, so I am excited to see our local upgrades by Council are underway.



STREETSCAPES: A snippet of what's coming for the Village Green. Indicative examples of sculptures we'll see.



APPEAL: An artist's impression of the stunning entry statement that will greet people to Wellington Point village.

Redlands Coast urban koala populations are sustainable

Recent independent scientific koala research has shown positive news for our urban koalas and also for Redlands Coast.

Council has combined with Griffith University to study the area's koalas and is now pursuing a number of initiatives based on the data that has been collected to ensure our urban koalas are better protected.

One such initiative is to establish Koala Conservation Safe Neighbourhoods, with the first being currently trialled in Ormiston.

Koala Conservation Safe Neighbourhoods are selected based on a range of criteria, including the existence of an identified local koala population; evidence of koala strike on local roads; and the existence of habitat that can support a koala population (which includes places linked to parks or reserves or wildlife corridors, and where land acquisition and habitat rehabilitation can be prioritised).

The Koala Conservation Safe Neighbourhood program aims to collaborate with the community to reduce the key threats to koala survival: vehicle-strike, dog attack, habitat loss and disease.

South-East Queensland's koala populations, including our Redlands Coast populations, have significantly declined over the past 15 years.

To continue to develop the changes needed to help stem decline, we need to work together to ensure our



COLLABORATION: Council is working with independent researchers to better protect local koalas.

iconic koalas are protected for future generations.

Koalas also boost our local economy, with many more holiday makers these days looking for eco-tourism experiences.

By increasing our local koala numbers, we also increase our tourism attraction.

Everyone has probably searched for a koala to show a visitor at some time, so I am sure there is widespread understanding of just how valued our koalas are.



Solutions needed for rail parking

You can see I have been kept busy with the various projects for our division. However, the larger issues and policies that affect the future vision for Redlands Coast are also a passion for me.

These include advocating to the State Government for solutions to parking at our railway stations and for road upgrades.

To relieve congestion and to encourage people to use our rail there must be sufficient car parking. Both local Ormiston and Wellington Point residents also have concerns about the overflow parking from the stations. I have written to Minister for Transport and Main Roads Mark

Bailey explaining the situation and have suggested some solutions.

With community engagement on the Draft Redlands Coast Transport Strategy now underway, Council is keen for feedback through yoursay. redland.qld.gov.au, so now is a good time to make your views known to support Council. One of the key things we want your input on is the prioritisation of projects.

This strategy will guide how and where Council spends your rates: on local road upgrades or cycle ways, or programs designed to change travel behaviour, for example.

I also have advocated for a change in fares as, since the last "zone



simplification", Ormiston and Cleveland stations are in a different zone to Wellington Point, making it nearly \$1000 a year dearer to travel to the Brisbane CBD. I encourage you to also write to the Minister if this is a concern for you.

Council also raised the lack of public infrastructure at train stations at the recent Local Government Association of Queensland conference to garner state-wide support for this issue.



COMMUNITY: This year's Inspiring Senior Doug Reynolds.

Supporting those who serve us

We are very fortunate in Redlands Coast to live in such safe neighbourhoods and I would like to thank our service men and women for all they do throughout the year.

Recently I was honoured to attend the Police Remembrance Day, pictured, where we took time to remember, chat and say thank you to those who serve and protect our community.

To assist our police, please report incidents including hooning and anti-social behaviour so they know the full picture of what is happening in our community and also to ensure they have the statistics to be able to ask for extra resources.

- If life or property is in immediate danger call Triple Zero (000)
- If not life threatening or non-urgent call Policelink 131 444
- For hoon specific information, call the dedicated hoon hot line 13HOON (134 666)

As chair of Local Disaster Recovery, another local group whose praise I cannot sing loudly enough is our fantastic SES. These men and women are all volunteers who, with a phone call, drop what they are doing and come together to assist our community, searching for missing persons and forensic evidence, tarping damaged roofs, and doorknocking residents for evacuation or with emergency information. They also tend to fallen trees and support by driving flood boats and emergency vehicles, as well as talking to the public about what they can do to be safe.

We all need to take some responsibility and tidy up our homes for the coming summer season. If you need SES assistance during storms phone 13 25 00 or, to become a volunteer, go to www.ses.qld.gov.au. If you would like advice on how to get ready for storm season, go to disaster.redland.qld.gov.au or call Council's Disaster, Planning and Operations on 3820 8955.



SERVICE: We are blessed to have dedicated police officers and SES volunteers serving Redlands Coast.

Community Chats

9am-11am
Ormiston Foodstore

11.30am-1.30pm
Wellington Point Village

24th November

8th December

2nd February 2019

16th February 2019

2nd March 2019

16th March 2019

30th March 2019

Please continue to stay in touch and feel free to email me at wendy.boglary@redland.qld.gov.au or call 3829 8619 or 0408 543 583 if I can assist.