



News from your Local Councillor

Cr Mark Edwards

November 2018

MAINLAND
EDITION

Dear resident

The Priority Development Area (PDA) project at Weinam Creek is progressing, with an application before the State Government to allow parking at Moores Road.

If approved, this area will provide relief parking as the project advances. The key infrastructure is a multi-level carpark located directly at the ferry terminal.

Council-owned subsidiary Redland Investment Corporation (RIC) is working with Council to develop stage one of the PDA project and plan for future stages.

RIC has advised that once the overflow parking is provided across the creek, the company will be negotiating with a number of potential partners to construct a carpark of up to five levels, catering for up to 2000 vehicles, within the ferry terminal precinct.

The final design will not be finalised until a development partnership is established.

However, it is proposed that retailers and service providers will be provided within or next to the carpark that will benefit all of the community.

There will be additional parking outside the parking facility.

RIC is looking to maximise parking options on the ferry terminal side of Weinam Creek so that the community is not reliant on the Moores Road land for commuter parking once the multi-level carpark is constructed.

The Moores Road land has never been intended as the primary parking facility for the islands but it is essential for alternate overflow parking to progress the PDA project.

The current proposal for the Moores land is to only provide basic parking.

There will be both long-term and short-term car parking options.

Once the multi-storey parking facility has been completed and other nearby parking overflow areas established to cater for the growing needs of the islands, other uses may be explored for the Moores Road land.

The provision of this infrastructure comes at a significant cost so, to save ratepayers money, this will be offset by other commercial opportunities within the Weinam Creek area.

Expect to see construction of other buildings, including residential unit

development, but keep in mind that any other development must include its own internal parking.

Funding to Council from these other developments will be directed at providing community infrastructure.

As I am advised of progress, I will share that in my newsletters.

The redevelopment of Weinam Creek will take time and there will be some inconvenience during the process.

The goal is to have a precinct that is user friendly, efficient and a welcoming place to visit and enjoy.



SOLUTION: An impression of what the multi-story Weinam Creek carpark might look like.

Delivering better roads

Thank you to the residents of Redland Bay for your understanding during the recent road works.

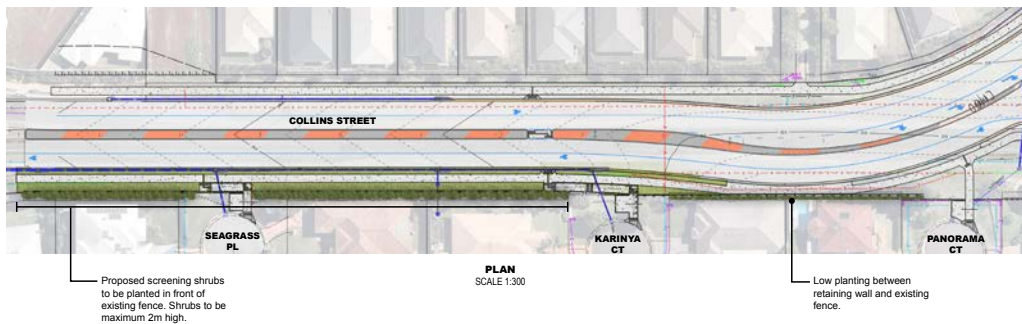
Many roads around Weinam Creek and extending through to Hamilton Street, Broadwater Terrace and Boundary Street have had significant resurfacing work.

Not only have there been delays for traffic during the day but there has been an impact on nearby residents as road seals were done through the evenings when

traffic volumes were low but construction noise was unavoidable.

The good news is that the roads are now much better and it will be many years before the work needs to be redone.

There will be unavoidable construction noise to continue for residents near Collins Street and School of Arts Road as the major upgrade is delivered over the coming months.



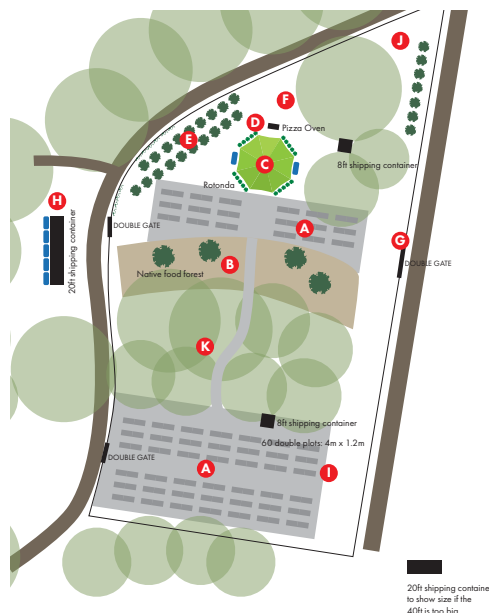
BETTER BY DESIGN: The upgrade of School of Arts and Collins roads will provide benefits for local residents as well as road users.



Garden plan starting to sprout

Plans to create a community garden at Redland Bay's Fielding Park are progressing after it was nominated as the preferred site following an evaluation by Council and the Redlands Coast Salad Bowl group.

On the boundary between Division 5 and Cr Julie Talty's Division 6, it is well suited to a community garden where southern Redlands residents can socialise and grow their own produce. These gardens build a sense of community, which is something the Redlands Coast Salad Bowl members have plenty of. In a short time they have built a strong supporter base and have had wonderful support from local businesses - including two nurseries - keen to give them a hand to get started. Neighbours in the area will be consulted and, once feedback has been received and the design (pictured) approved, work can start to bring the garden to life. Info: facebook.com/RedlandsCoastSaladBowl.



Stay safe this summer

As we head into summer, ask yourself: "Am I ready for storms and bushfires?"

With warmer than usual conditions predicted and the ever present threat of severe storms at this time of year, it is important to be prepared for all conditions.

Simple tasks you can do today to keep you and your loved ones safe include:

- Clearing debris from roof gutters
- Cleaning up your yard
- Creating an emergency evacuation kit with all the essentials in one easy-to-access spot, and

Having a plan for what you would do and where you would go in an emergency to protect yourselves and the things that are important to you.


For information, go to redlandsdisasterplan.com.au

Merry Christmas

I would like to wish all residents of Redland Bay and their families a great Christmas and a safe and happy New Year.

Please don't hesitate to contact me for help if you need it. You can email me anytime at mark.edwards@redland.qld.gov.au or call me on 0407 695 667.

Warm regards


Cr Mark Edwards
 Division 5 - Mainland