

Redlands Coast COVID-19 Economic Update

May 2021



Redlands
c o a s t



Redland
CITY COUNCIL

Outline

- COVID-19 Economic Overview and Local Impact – May 2021
 - Impact on Output
 - Impact on Value Added
 - Impact on Employment
 - JobKeeper
 - JobSeeker

Impact on Output

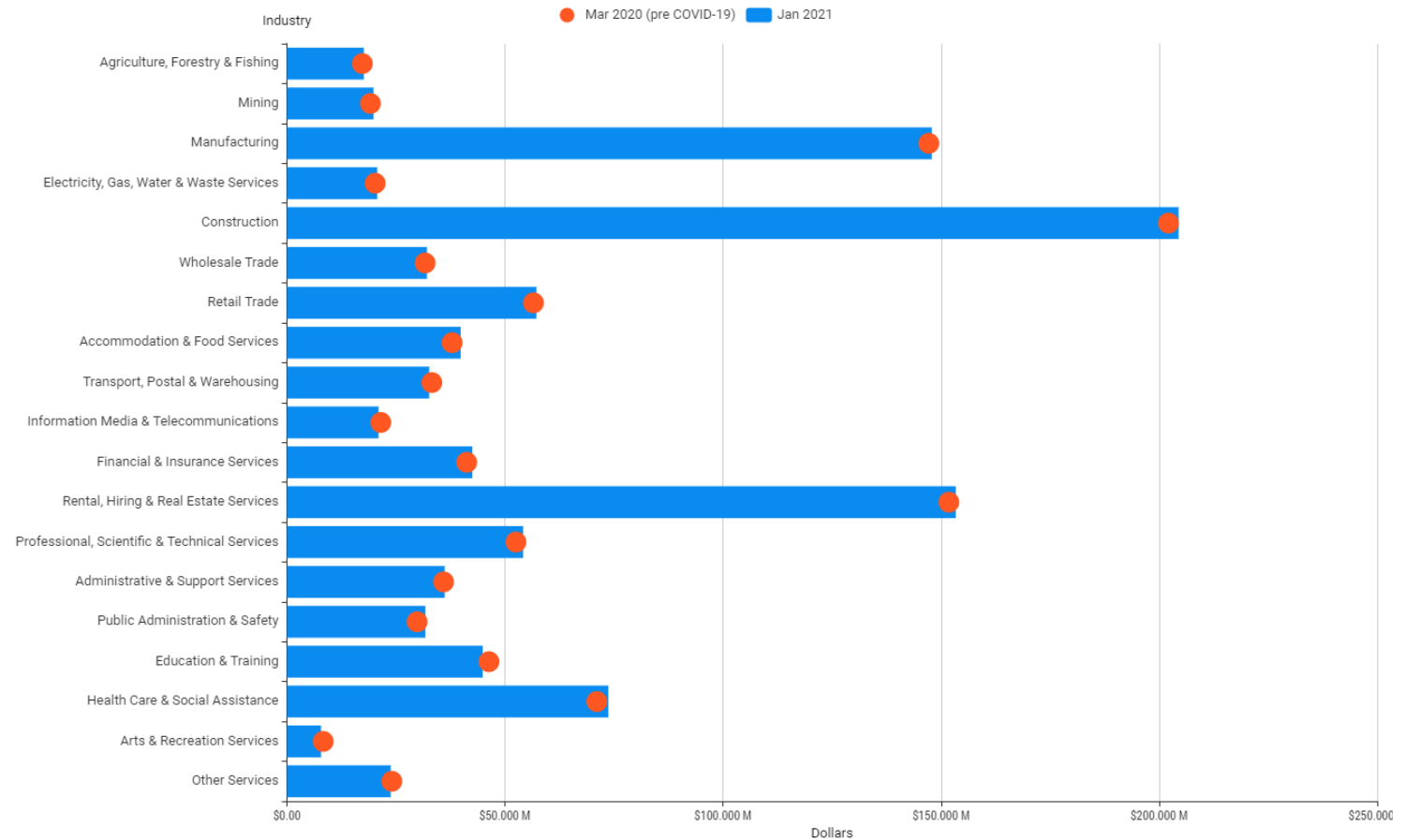
1. Impact on Output*

Prior to COVID-19, Redlands had an estimated total monthly output of \$1.048 billion across all industry sectors. Output pertains to the gross revenue generated by businesses and organisations in each of the industry sectors.

By January 2021, industry output was estimated at \$1.062 billion, an increase of 1.3%. This increase in output is relatively higher than in South East Queensland, which demonstrated a moderate increase by 1.06% when comparing March 2020 and January 2021 periods.

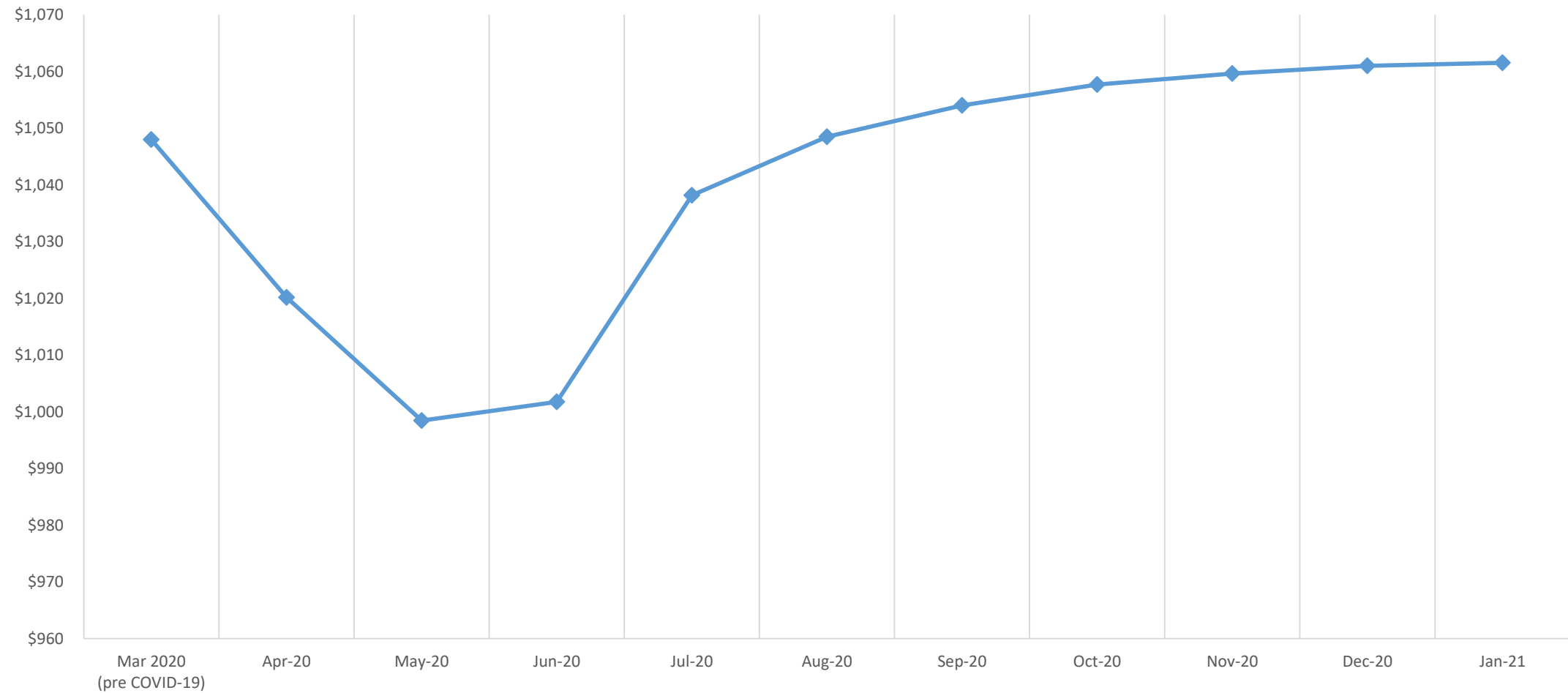
A large number of industry sectors in the Redlands experienced upsurge in output between March 2020 and January 2021. Health Care and Social Assistance had the most increase in output followed by Construction, and Accommodation and Food Services.

Figure 1. COVID-19 Impact on Output, March 2020 and January 2021, Redlands LGA



*Source: COVID-19 impacts was generated using REMPLAN Economy accessed on 24 May 2021. All data in this section are monthly estimates and should not be annualised.

Figure 2. COVID-19 Impact on Output (\$million), Monthly, Redlands LGA



**Source: COVID-19 impacts was generated using REMPLAN Economy accessed on 24 May 2021. All data in this section are monthly estimates and should not be annualised.*

Impact on Value-added

2. Impact on Value added*

In March 2020, the total monthly value added across local industry sectors in the Redlands was approximately \$492.527 million. By January 2021, total value added was estimated at \$504.097 million or an increase of 2.3%.

Health Care and Social Assistance experienced the greatest increase in terms of value added. This was followed by Rental, Hiring and Real Estate Services, and Construction.

While modest gains were experienced by a large number of sectors in terms of value added, there were industries that still declined such as Education and Training, and Transport, Postal and Warehousing.

Value added represents the marginal economic value that is contributed by each industry sector. It can be generated by subtracting local expenditure and expenditure on regional imports from the output. Value added is a significant component in calculating Gross Regional Product.

Figure 3. COVID-19 Impact on Value added, March 2020 and January 2021, Redlands LGA

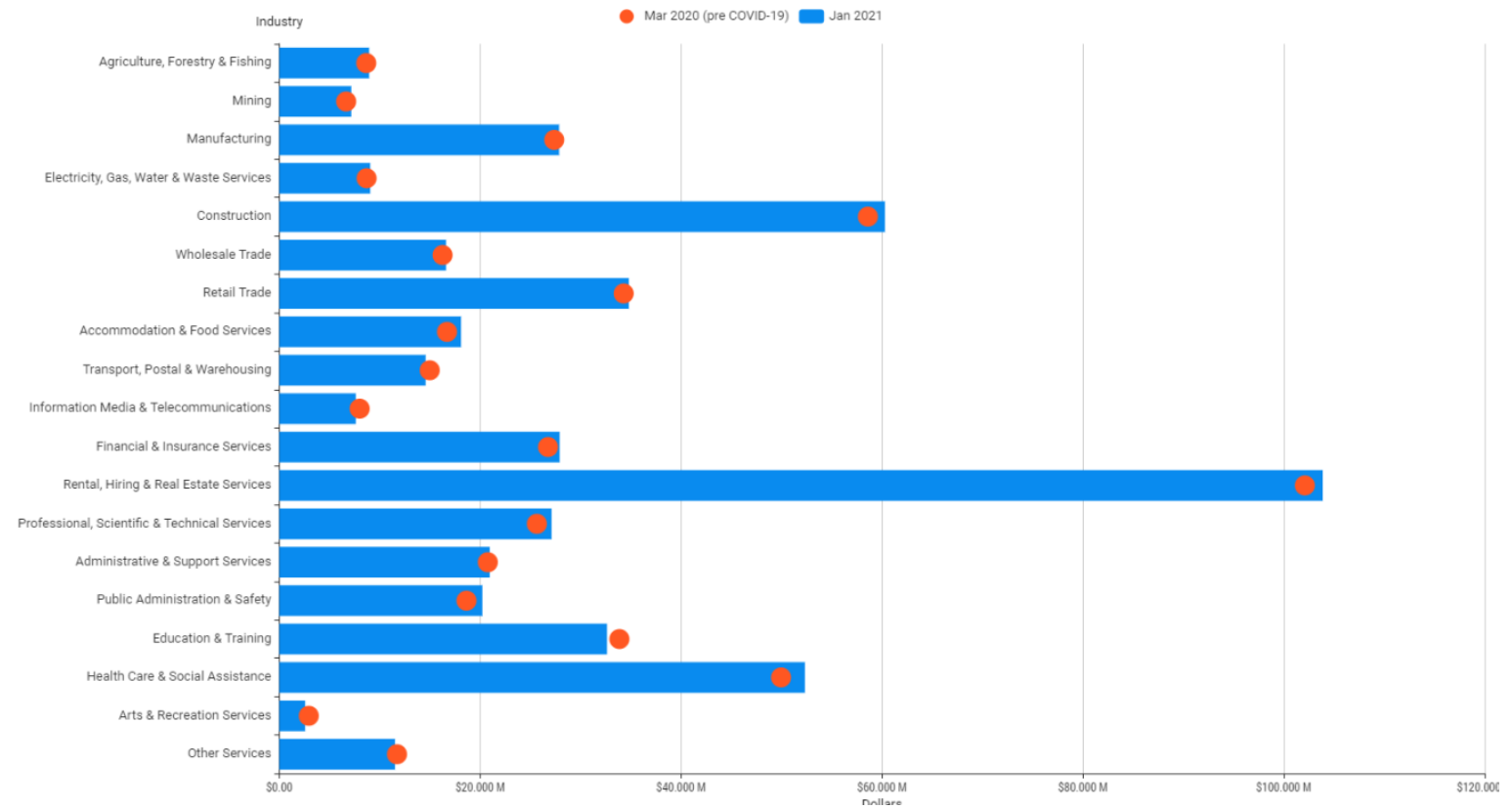
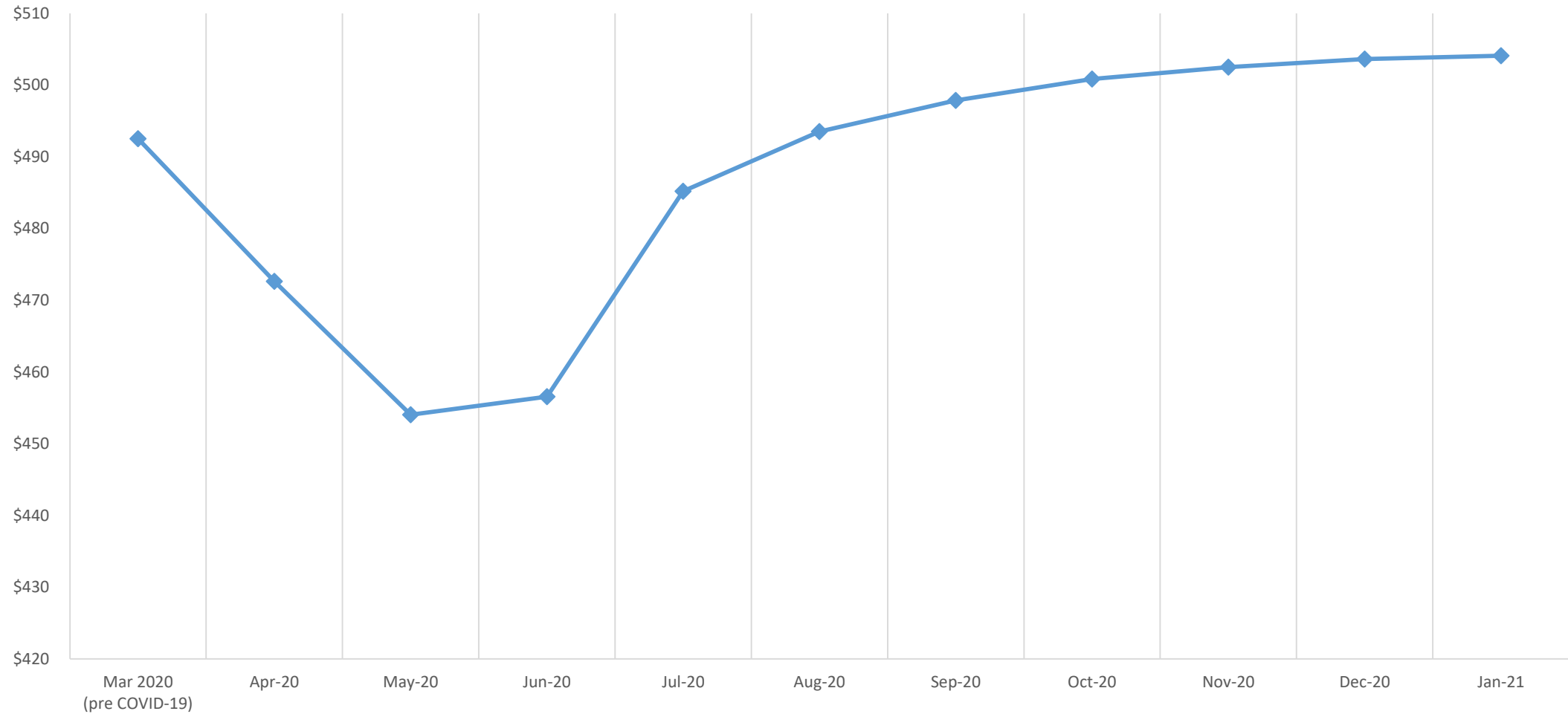


Figure 4. COVID-19 Impact on Value added (\$million), Monthly, Redlands LGA



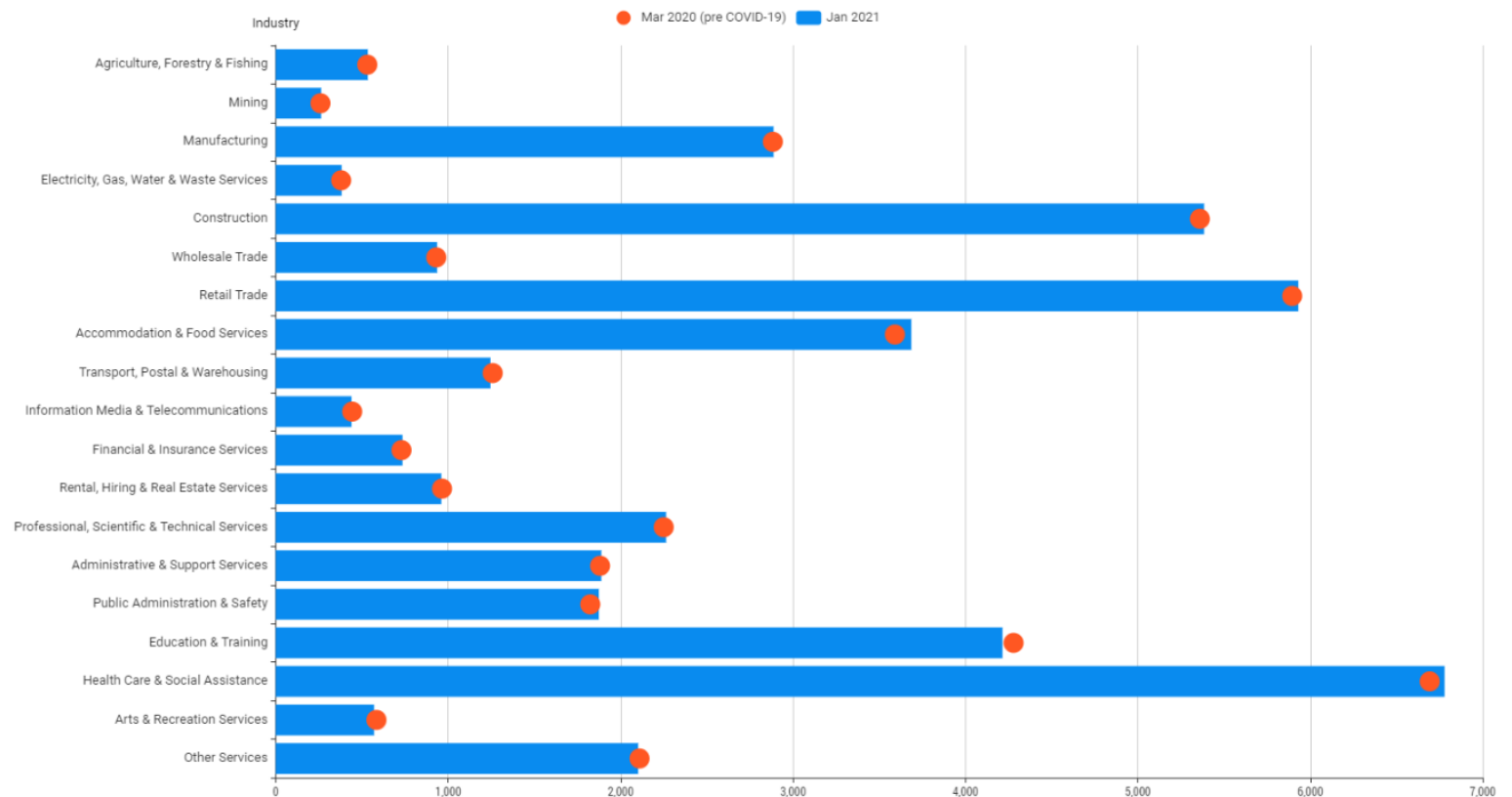
Impact on Employment

3. Impact on Employment*

The total employment in Redlands prior to COVID-19 (March 2020) was estimated at 42,844. With the lifting of COVID-19 related restrictions and the onset of the Christmas season, the level of optimism and confidence has increased and businesses started to revert to normal operations. Total employment improved in the January 2021 period and was estimated at 43,074, or an increase of 0.5%

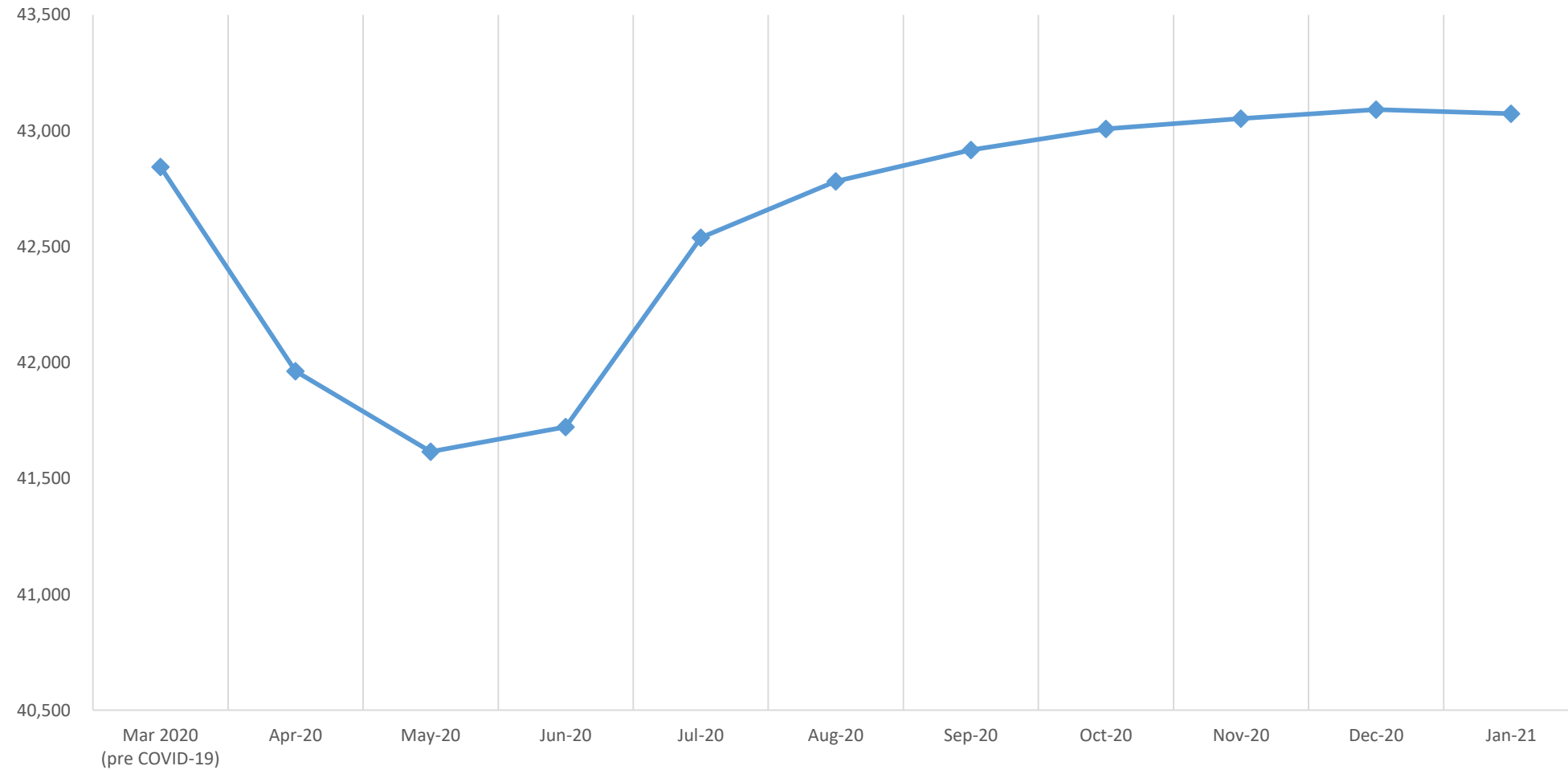
In terms of numbers, Accommodation and Food Services industry in the Redlands experienced the greatest increase from 3,591 in March 2020 to 3,686 (+95) in January 2021. This was followed by Health Care and Social Assistance (+86), Public Administration and Safety (+50), and Retail Trade (+36).

Figure 5. COVID-19 Impact on Employment, March 2020 and January 2021, Redlands LGA



*Source: COVID-19 impacts was generated using REMPLAN Economy accessed on 24 May 2021. All data in this section are monthly estimates and should not be annualised.

Figure 6. COVID-19 Impact on Employment, Monthly, Redlands LGA



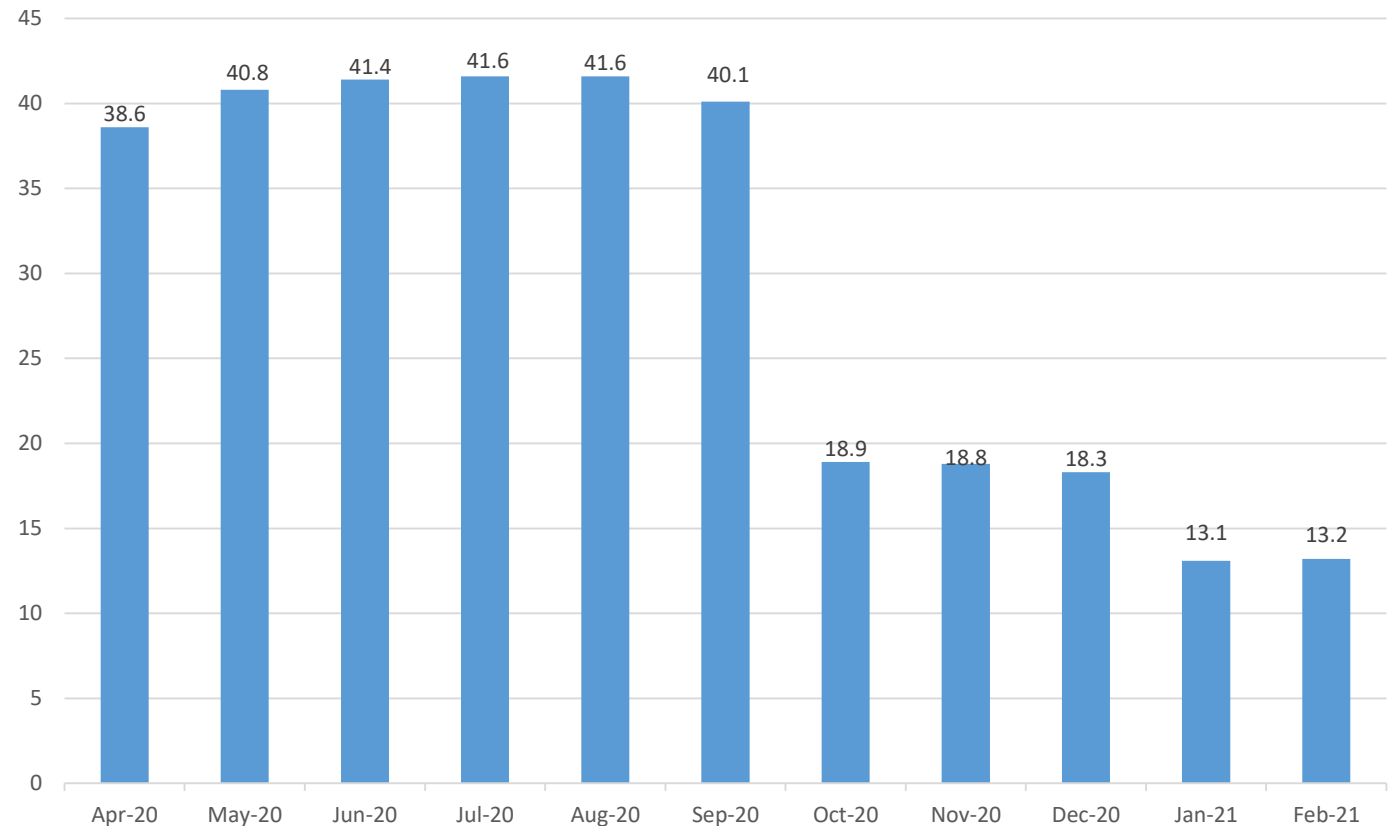
JobKeeper

4. JobKeeper*

In the Redlands, it is estimated that 13.2% of local businesses applied for JobKeeper support in February 2021. That percentage is similar to the previous month when 13.1% had lodged JobKeeper applications.

By the end of September, the Federal Government had introduced changes to the JobKeeper payment that focussed more on businesses heavily impacted by COVID-19. Payment rates were also reduced, and two tiers of payment were introduced. The JobKeeper Payment ended on 28 March 2021.

Figure 7. Proportion of businesses who applied for JobKeeper payment, by month, Redlands LGA



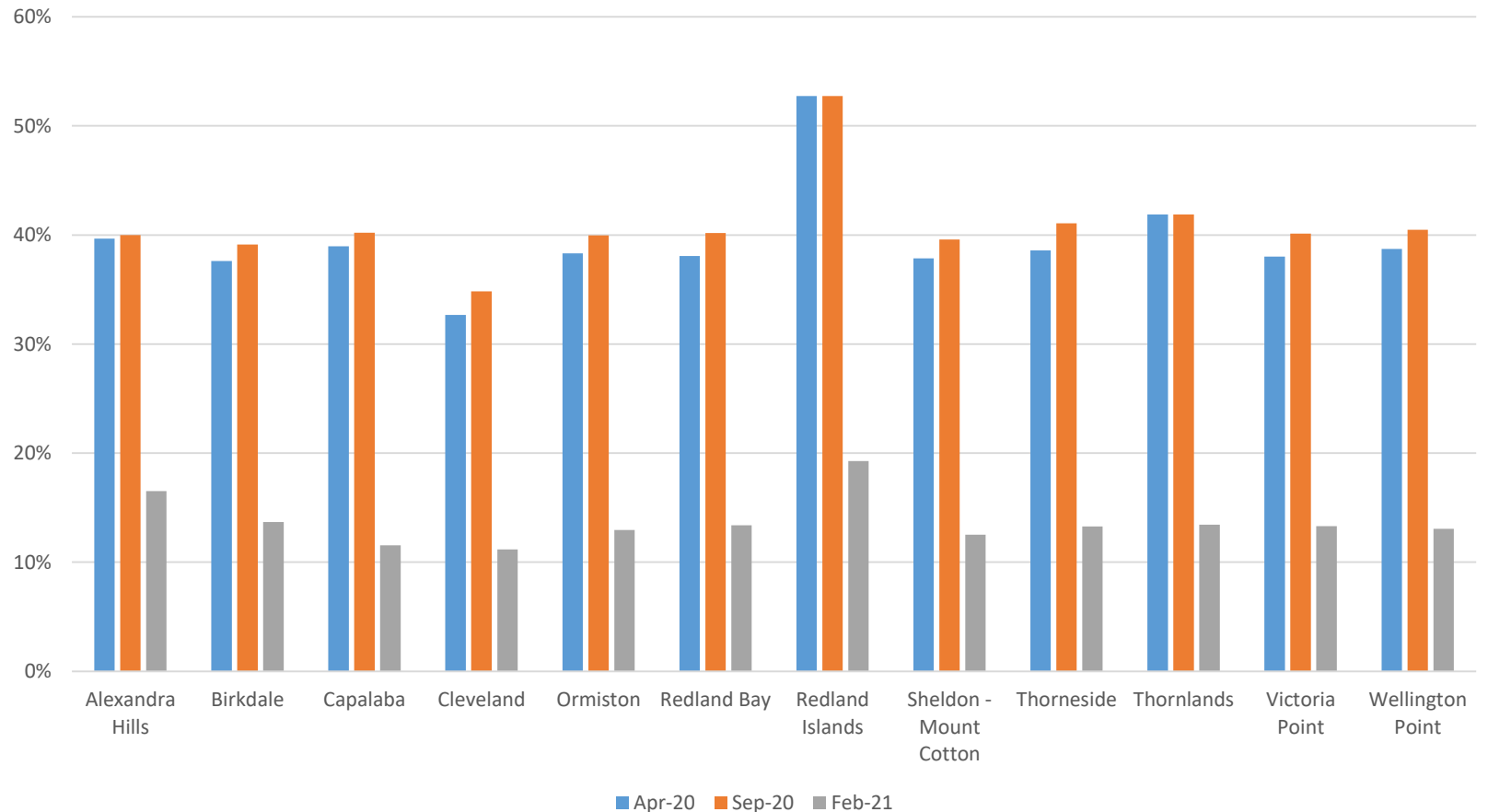
*Source JobKeeper data was generated using REMPLAN Economy.

JobKeeper

Across the city's statistical areas 2 (SA2), in February 2021, Redland Islands had the highest proportion (19.3%) of businesses with JobKeeper applications. Alexandra Hills and Birkdale followed that. Redland Islands consistently had the highest proportion accessing JobKeeper over three time periods.

While JobKeeper applications were comparable across all SA2s between April and September 2020, the proportion had dropped significantly in February 2021.

Figure 8. Proportion of businesses (%) who applied for JobKeeper payment, Statistical Areas 2, Redlands LGA



*Source JobKeeper data was generated using REMPLAN Economy.

JobSeeker

5. JobSeeker*

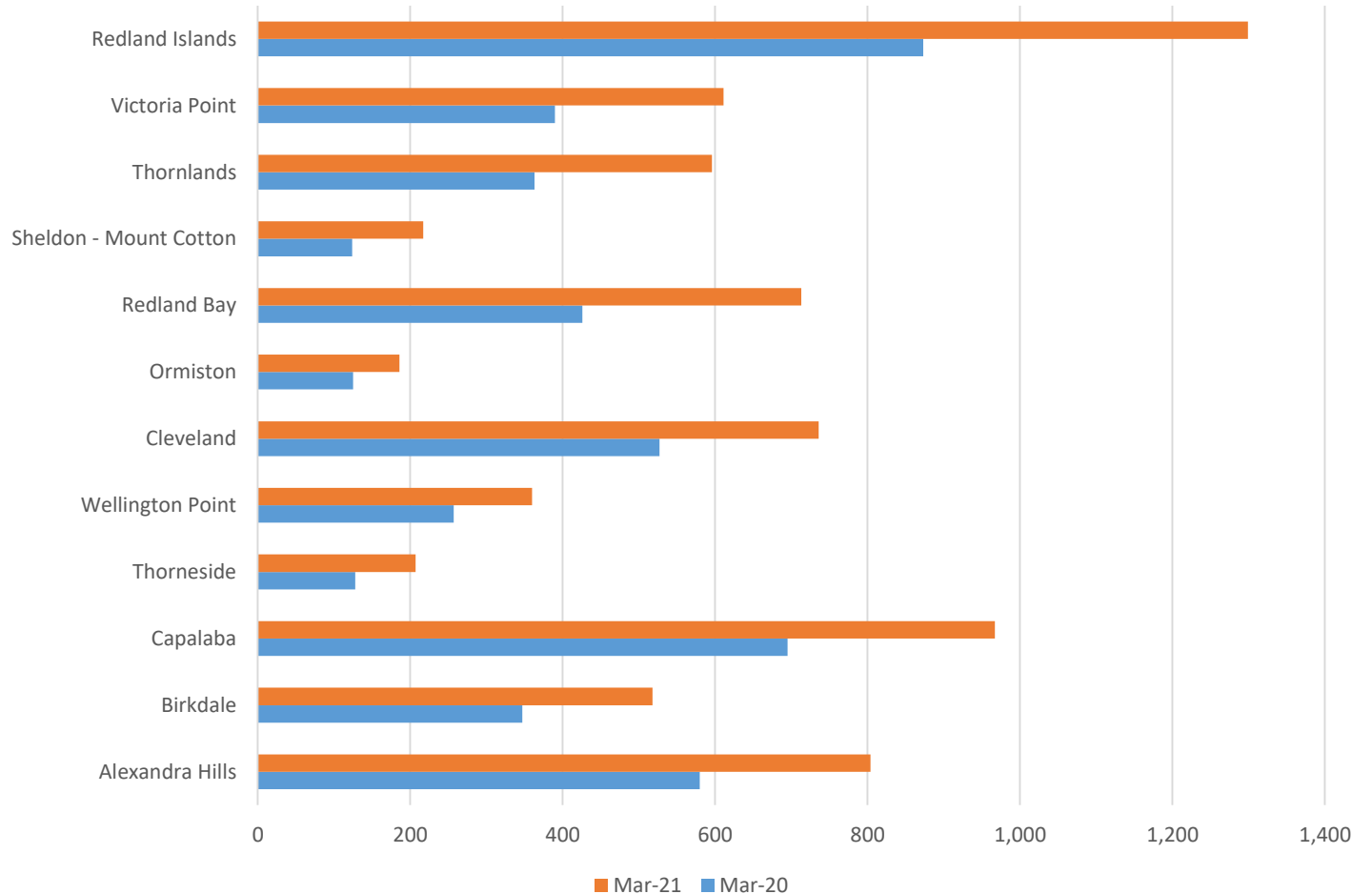
Redlands had 7,214 JobSeeker and Youth Allowance recipients in March 2021 (or 7.2% of the city's 15-64 age population). That number was significantly higher than in the same period last year (4,835 in March 2020).

Redland Islands had the most number of Job Seeker and Youth Allowance recipients in March 2021 with 1,299 (or 24.7% of 15 to 64 years old persons in that area) than the other suburbs.

Capalaba (967 recipients) and Alexandra Hills (804 recipients) also had many recipients in the same period.

The JobSeeker payment was reduced at the end of March 2021.

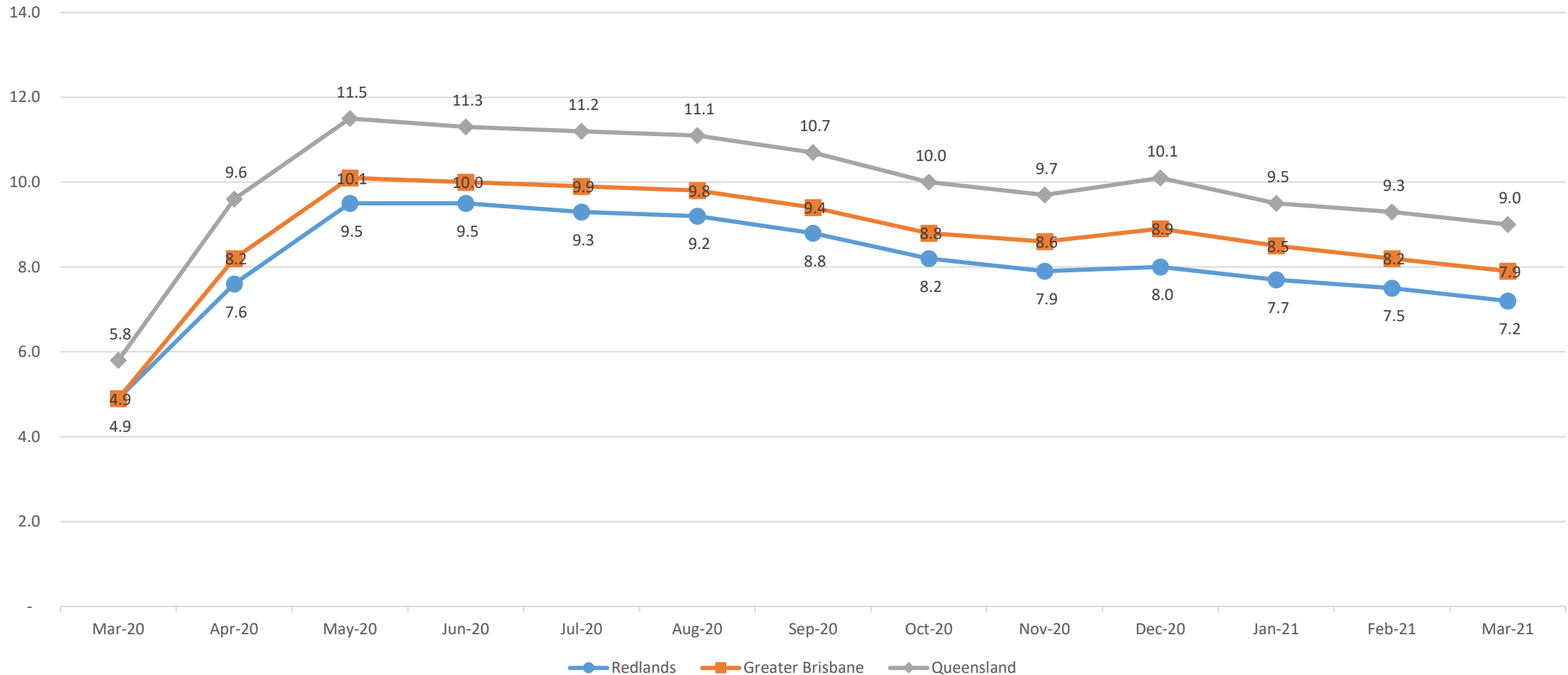
Figure 9. Number of JobSeeker and Youth Allowance Recipients, March 2020 and March 2021, Statistical Areas 2, Redlands LGA



*Source JobSeeker is based on dataset from Department of Social Services and compiled by id profile.

JobSeeker

Figure 10. Comparison of Proportions (%) of JobSeeker and Youth Allowance Recipients relative to 15-64 age population, March 2020 – March 2021



*Source JobSeeker is based on dataset from Department of Social Services and compiled by id profile.