

Redland Libraries

Redlands Coast *Timelines*

Alexandra Hills



Alexandra Hills, 1970

RP1698

WARNING: Aboriginal and/or Torres Strait Islander peoples should be aware that this document may contain the images and/or names of people who have passed away.

Information and images from resources held in **Local History** Collections, Redland City Council Libraries.

📄 [Local History website](#) ✉ localhistory@redland.qld.gov.au or ☎ 3829 8311

Contents

1920s	2
1950s	3
1960s	4
1970s	6
1980s:	9
1990s	14
2000s	17
So what had happened to trigger this rapid growth?	20
Snippets	21



Alexandra Hills 1973

QImagery

Gorenpul and Quandamooka people have lived on and around this area for tens of thousands of years. Geological evidence dates occupation at a minimum of 21,000 years. Local people identify the Noonucal, Gorenpul and Nughi as the traditional owners of the Islands and adjoining areas. An area along Old Cleveland Road East, around the Creek and waterholes near Judy Holt Park is believed to have been the site of a substantial village and meeting place, having been noted by early Europeans.

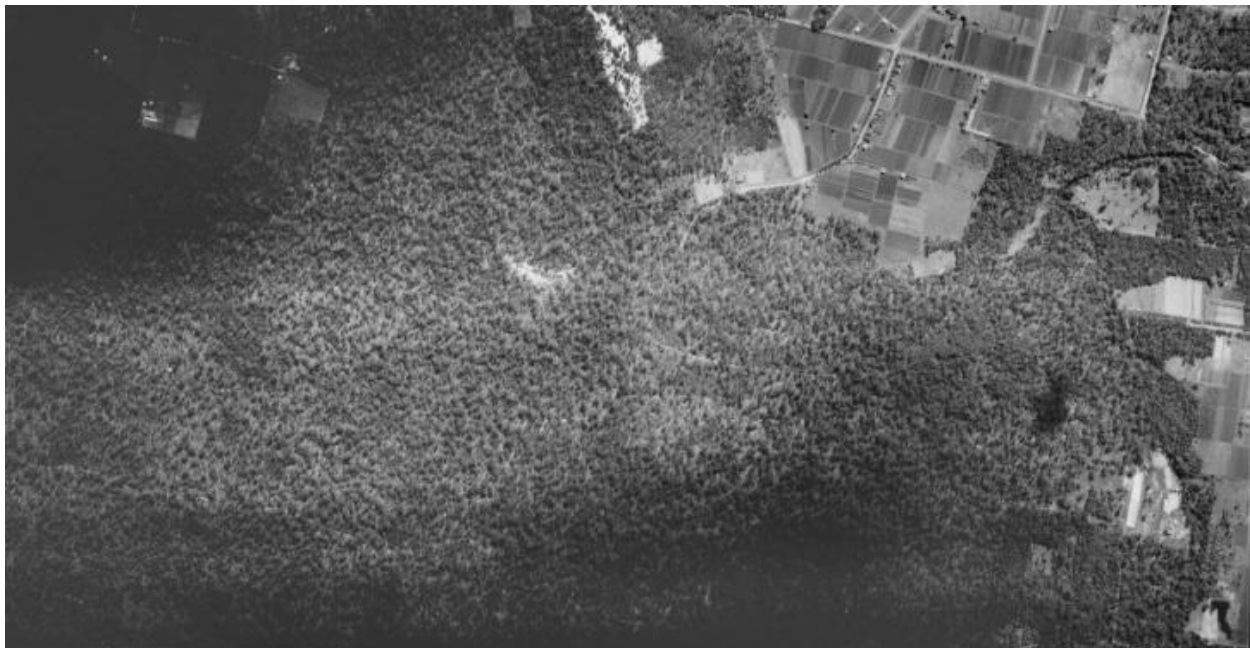
Food supplies were plentiful. Fishing, hunting and gathering were part of the communal economy, with people collecting food according to their carrying capacity, and food shared according to families' needs. Dugong as well as fish such as mullet and tailor were caught with nets, sometimes aided by dolphins. Turtle and shellfish were also collected. Villages and campsites existed across the region, and such places were often designated as a Reserve, and not opened for settlement.

Oysters, mullet, crabs, cowrie, prawns, cockles, eugarie, mussels and turtle were common foods at different times of the year. Other foods hunted and collected at different times of the year included kangaroo, wallaby, goannas, flying foxes, birds, possum, and bandicoots, native fruits and berries, honey, and drinks made from flowers. Bungwal/dingowa the rhizome of a fern, was pounded into flour, to make a type of damper or bread, and once a year a journey was made to the Bunya Mountains to gather bunya nuts, which could also be used the same way, or eaten roasted or fresh. Grind stones have been dated back more than 30,000 years, making Aboriginal people the world's first bakers.

Corroborees and other ceremonies were an integral part of community life, and huge regional celebrations were likely to have had ceremonial, spiritual, social, cultural and economic significance. Campsites and dwellings existed wherever there was fresh water nearby. When the European settlers arrived in the 1820s, the Aboriginal people in the area numbered more than 5,000. The new arrivals caused huge change to Quandamooka lifestyles and to the environment.

1920s

In 1928 the then-unformed Finucane Road was declared part of the main Cleveland-Capalaba Road by the Main Road Commission. At the time, travel was along Old Cleveland Road East through Birkdale, Wellington Point and Ormiston. Residents of these areas opposed having another route opened because of the possible detrimental effect it may have had on their businesses, and Finucane Road remained just a rough track for many more years. In 1946 Finucane Road and the southern part of Allenby Road were still just dirt tracks.





The second house to be built on the track that would later become Finucane Road, 1942.

HP0801

1950s

In July 1949 parts of Tingalpa Shire and Cleveland Shire had merged to become Redland Shire. The new Shire's population was about 5,600.

The suburb **Alexandra Hills** didn't exist at that time, and most of the area was bush with a little being farmed.

In 1950, enrolments at the Redland Shire's schools were:

Cleveland: 239
 Ormiston: 80
 Capalaba: 45
 Wellington Pt: 95
 Victoria Pt: 92
 Mt Cotton: 26
 Redland Bay: 88
 Dunwich: 65
 Thornlands: 95
 Birkdale: 128

By 1950 the Thorne estate in Thorneside had been subdivided and many families moved to the area. This explains the apparently large number of students at Birkdale State School.

Camping areas included the Victoria Point and Wellington Point reserves, the Cleveland cricket ground reserve (GJ Walter Park), Oyster Point reserve and the Thorneside public reserve.

In July 1950 storms and resulting flooding washed out one third of the Redland Shire's 30 miles of gravel roads.

Dr Poole recommended a garbage service be introduced but the Redland Shire Council said there was insufficient population to justify a permanent service in place of the existing intermittent collection. Thornlands, Pinklands, Capalaba and Badgen (now Birkdale/Wellington Point) got a sanitary (nightsoil collection) service.

That year the Paxton Street jetty was being built in Cleveland. It took over from Black's jetty as the main landing place for boats travelling to the Islands. By this stage, the Dunwich Benevolent Asylum had moved to Sandgate, and when it was completed the Paxton Street jetty was used by the Health Department to take passengers and goods to Peel Island Lazaret. Fishermen also used the Paxton Street jetty to offload their catch for the fish market.



View facing south over Cleveland Point, 1974

HP7556

In 1950 plans were under way for Cleveland's centenary celebrations. Plans included changing the name of Middle Street and Shore Street West to Centenary Parade but people objected. The RSC put aside £150 (\$285) for the celebrations. A cairn was made by bricklayer E Ovenden and plasterer J Hayes.

The Minister for Education Mr Devries approved the new secondary school at Cleveland State School, which was to comprise a two-classroom extension with one room for domestic science and the other for woodworking and sheet metalwork. In 1956 the Shire's first high school classes began at the start of the school year with 32 high school students in the new rooms at the primary school. Officially called the Cleveland Secondary Department, it was unofficially known as the High Top.

1960s

In 1961 The Subdivisional Committee of Redland Shire Council tabled a proposal to develop a satellite town on both sides of Finucane Road in June. The name **Alexandra Hills** was first put forward in 1963, possibly to commemorate the 1959 visit of Princess Alexandra to the Shire, and it was registered in September 1965. In 1967, most of Alexandra Hills was still bush. Some development had started on the northern side of Finucane Road, but to the south there was bush to Redland Bay Road, Boundary Road and Panorama Drive.

In 1962 121 students of Cleveland Secondary School moved to a new site on the corner of Smith and Russell Streets. The Cleveland State High School was officially opened in April 1963 by the Queensland Treasurer Thomas Hiley. This was also the first year that senior classes were offered. Until then, classes had been offered up to the equivalent of year 10.

Sallows Street was the first development on the southern side in 1967, and can be seen in the aerial. Construction appears to be starting on the bridge over Hilliards Creek, to replace the old low crossing.



Finucane and Allenby Roads, 1967

QImagery

GOVERNMENT SALE

OF ALLOTMENTS

TOWN OF CLEVELAND

To be offered at Auction for an ESTATE IN FEE SIMPLE.
The sale to be ON THE SITE of the allotments, at CLEVELAND,
on SATURDAY, 2nd DECEMBER, 1967, at 10 o'clock a.m.
(In the event of rain the Sale will be held at the COURT HOUSE, CLEVELAND,
at the above time and date)

PLAN
 Allotments in Section 132 to 137
 TOWN OF CLEVELAND
 PARISH OF CAPALABA
 COUNTY OF STANLEY
 Northern Territory, Australia
 Shire of Redlands
 Shire of 1000 to 4000
 (For Nos. 1, 2, 3, 4, 5, 6, 7, 8, 9, 10, 11, 12, 13, 14, 15, 16, 17, 18, 19, 20, 21, 22, 23, 24, 25, 26, 27, 28, 29, 30, 31, 32, 33, 34, 35, 36, 37, 38, 39, 40, 41, 42, 43, 44, 45, 46, 47, 48, 49, 50, 51, 52, 53, 54, 55, 56, 57, 58, 59, 60, 61, 62, 63, 64, 65, 66, 67, 68, 69, 70, 71, 72, 73, 74, 75, 76, 77, 78, 79, 80, 81, 82, 83, 84, 85, 86, 87, 88, 89, 90, 91, 92, 93, 94, 95, 96, 97, 98, 99, 100, 101, 102, 103, 104, 105, 106, 107, 108, 109, 110, 111, 112, 113, 114, 115, 116, 117, 118, 119, 120, 121, 122, 123, 124, 125, 126, 127, 128, 129, 130, 131, 132, 133, 134, 135, 136, 137, 138, 139, 140, 141, 142, 143, 144, 145, 146, 147, 148, 149, 150, 151, 152, 153, 154, 155, 156, 157, 158, 159, 160, 161, 162, 163, 164, 165, 166, 167, 168, 169, 170, 171, 172, 173, 174, 175, 176, 177, 178, 179, 180, 181, 182, 183, 184, 185, 186, 187, 188, 189, 190, 191, 192, 193, 194, 195, 196, 197, 198, 199, 200, 201, 202, 203, 204, 205, 206, 207, 208, 209, 210, 211, 212, 213, 214, 215, 216, 217, 218, 219, 220, 221, 222, 223, 224, 225, 226, 227, 228, 229, 230, 231, 232, 233, 234, 235, 236, 237, 238, 239, 240, 241, 242, 243, 244, 245, 246, 247, 248, 249, 250, 251, 252, 253, 254, 255, 256, 257, 258, 259, 260, 261, 262, 263, 264, 265, 266, 267, 268, 269, 270, 271, 272, 273, 274, 275, 276, 277, 278, 279, 280, 281, 282, 283, 284, 285, 286, 287, 288, 289, 290, 291, 292, 293, 294, 295, 296, 297, 298, 299, 300, 301, 302, 303, 304, 305, 306, 307, 308, 309, 310, 311, 312, 313, 314, 315, 316, 317, 318, 319, 320, 321, 322, 323, 324, 325, 326, 327, 328, 329, 330, 331, 332, 333, 334, 335, 336, 337, 338, 339, 340, 341, 342, 343, 344, 345, 346, 347, 348, 349, 350, 351, 352, 353, 354, 355, 356, 357, 358, 359, 360, 361, 362, 363, 364, 365, 366, 367, 368, 369, 370, 371, 372, 373, 374, 375, 376, 377, 378, 379, 380, 381, 382, 383, 384, 385, 386, 387, 388, 389, 390, 391, 392, 393, 394, 395, 396, 397, 398, 399, 400, 401, 402, 403, 404, 405, 406, 407, 408, 409, 410, 411, 412, 413, 414, 415, 416, 417, 418, 419, 420, 421, 422, 423, 424, 425, 426, 427, 428, 429, 430, 431, 432, 433, 434, 435, 436, 437, 438, 439, 440, 441, 442, 443, 444, 445, 446, 447, 448, 449, 450, 451, 452, 453, 454, 455, 456, 457, 458, 459, 460, 461, 462, 463, 464, 465, 466, 467, 468, 469, 470, 471, 472, 473, 474, 475, 476, 477, 478, 479, 480, 481, 482, 483, 484, 485, 486, 487, 488, 489, 490, 491, 492, 493, 494, 495, 496, 497, 498, 499, 500, 501, 502, 503, 504, 505, 506, 507, 508, 509, 510, 511, 512, 513, 514, 515, 516, 517, 518, 519, 520, 521, 522, 523, 524, 525, 526, 527, 528, 529, 530, 531, 532, 533, 534, 535, 536, 537, 538, 539, 540, 541, 542, 543, 544, 545, 546, 547, 548, 549, 550, 551, 552, 553, 554, 555, 556, 557, 558, 559, 560, 561, 562, 563, 564, 565, 566, 567, 568, 569, 570, 571, 572, 573, 574, 575, 576, 577, 578, 579, 580, 581, 582, 583, 584, 585, 586, 587, 588, 589, 590, 591, 592, 593, 594, 595, 596, 597, 598, 599, 600, 601, 602, 603, 604, 605, 606, 607, 608, 609, 610, 611, 612, 613, 614, 615, 616, 617, 618, 619, 620, 621, 622, 623, 624, 625, 626, 627, 628, 629, 630, 631, 632, 633, 634, 635, 636, 637, 638, 639, 640, 641, 642, 643, 644, 645, 646, 647, 648, 649, 650, 651, 652, 653, 654, 655, 656, 657, 658, 659, 660, 661, 662, 663, 664, 665, 666, 667, 668, 669, 670, 671, 672, 673, 674, 675, 676, 677, 678, 679, 680, 681, 682, 683, 684, 685, 686, 687, 688, 689, 690, 691, 692, 693, 694, 695, 696, 697, 698, 699, 700, 701, 702, 703, 704, 705, 706, 707, 708, 709, 710, 711, 712, 713, 714, 715, 716, 717, 718, 719, 720, 721, 722, 723, 724, 725, 726, 727, 728, 729, 730, 731, 732, 733, 734, 735, 736, 737, 738, 739, 740, 741, 742, 743, 744, 745, 746, 747, 748, 749, 750, 751, 752, 753, 754, 755, 756, 757, 758, 759, 760, 761, 762, 763, 764, 765, 766, 767, 768, 769, 770, 771, 772, 773, 774, 775, 776, 777, 778, 779, 780, 781, 782, 783, 784, 785, 786, 787, 788, 789, 790, 791, 792, 793, 794, 795, 796, 797, 798, 799, 800, 801, 802, 803, 804, 805, 806, 807, 808, 809, 810, 811, 812, 813, 814, 815, 816, 817, 818, 819, 820, 821, 822, 823, 824, 825, 826, 827, 828, 829, 830, 831, 832, 833, 834, 835, 836, 837, 838, 839, 840, 841, 842, 843, 844, 845, 846, 847, 848, 849, 850, 851, 852, 853, 854, 855, 856, 857, 858, 859, 860, 861, 862, 863, 864, 865, 866, 867, 868, 869, 870, 871, 872, 873, 874, 875, 876, 877, 878, 879, 880, 881, 882, 883, 884, 885, 886, 887, 888, 889, 890, 891, 892, 893, 894, 895, 896, 897, 898, 899, 900, 901, 902, 903, 904, 905, 906, 907, 908, 909, 910, 911, 912, 913, 914, 915, 916, 917, 918, 919, 920, 921, 922, 923, 924, 925, 926, 927, 928, 929, 930, 931, 932, 933, 934, 935, 936, 937, 938, 939, 940, 941, 942, 943, 944, 945, 946, 947, 948, 949, 950, 951, 952, 953, 954, 955, 956, 957, 958, 959, 960, 961, 962, 963, 964, 965, 966, 967, 968, 969, 970, 971, 972, 973, 974, 975, 976, 977, 978, 979, 980, 981, 982, 983, 984, 985, 986, 987, 988, 989, 990, 991, 992, 993, 994, 995, 996, 997, 998, 999, 1000, 1001, 1002, 1003, 1004, 1005, 1006, 1007, 1008, 1009, 1010, 1011, 1012, 1013, 1014, 1015, 1016, 1017, 1018, 1019, 1020, 1021, 1022, 1023, 1024, 1025, 1026, 1027, 1028, 1029, 1030, 1031, 1032, 1033, 1034, 1035, 1036, 1037, 1038, 1039, 1040, 1041, 1042, 1043, 1044, 1045, 1046, 1047, 1048, 1049, 1050, 1051, 1052, 1053, 1054, 1055, 1056, 1057, 1058, 1059, 1060, 1061, 1062, 1063, 1064, 1065, 1066, 1067, 1068, 1069, 1070, 1071, 1072, 1073, 1074, 1075, 1076, 1077, 1078, 1079, 1080, 1081, 1082, 1083, 1084, 1085, 1086, 1087, 1088, 1089, 1090, 1091, 1092, 1093, 1094, 1095, 1096, 1097, 1098, 1099, 1100, 1101, 1102, 1103, 1104, 1105, 1106, 1107, 1108, 1109, 1110, 1111, 1112, 1113, 1114, 1115, 1116, 1117, 1118, 1119, 1120, 1121, 1122, 1123, 1124, 1125, 1126, 1127, 1128, 1129, 1130, 1131, 1132, 1133, 1134, 1135, 1136, 1137, 1138, 1139, 1140, 1141, 1142, 1143, 1144, 1145, 1146, 1147, 1148, 1149, 1150, 1151, 1152, 1153, 1154, 1155, 1156, 1157, 1158, 1159, 1160, 1161, 1162, 1163, 1164, 1165, 1166, 1167, 1168, 1169, 1170, 1171, 1172, 1173, 1174, 1175, 1176, 1177, 1178, 1179, 1180, 1181, 1182, 1183, 1184, 1185, 1186, 1187, 1188, 1189, 1190, 1191, 1192, 1193, 1194, 1195, 1196, 1197, 1198, 1199, 1200, 1201, 1202, 1203, 1204, 1205, 1206, 1207, 1208, 1209, 1210, 1211, 1212, 1213, 1214, 1215, 1216, 1217, 1218, 1219, 1220, 1221, 1222, 1223, 1224, 1225, 1226, 1227, 1228, 1229, 1230, 1231, 1232, 1233, 1234, 1235, 1236, 1237, 1238, 1239, 1240, 1241, 1242, 1243, 1244, 1245, 1246, 1247, 1248, 1249, 1250, 1251, 1252, 1253, 1254, 1255, 1256, 1257, 1258, 1259, 1260, 1261, 1262, 1263, 1264, 1265, 1266, 1267, 1268, 1269, 1270, 1271, 1272, 1273, 1274, 1275, 1276, 1277, 1278, 1279, 1280, 1281, 1282, 1283, 1284, 1285, 1286, 1287, 1288, 1289, 1290, 1291, 1292, 1293, 1294, 1295, 1296, 1297, 1298, 1299, 1300, 1301, 1302, 1303, 1304, 1305, 1306, 1307, 1308, 1309, 1310, 1311, 1312, 1313, 1314, 1315, 1316, 1317, 1318, 1319, 1320, 1321, 1322, 1323, 1324, 1325, 1326, 1327, 1328, 1329, 1330, 1331, 1332, 1333, 1334, 1335, 1336, 1337, 1338, 1339, 1340, 1341, 1342, 1343, 1344, 1345, 1346, 1347, 1348, 1349, 1350, 1351, 1352, 1353, 1354, 1355, 1356, 1357, 1358, 1359, 1360, 1361, 1362, 1363, 1364, 1365, 1366, 1367, 1368, 1369, 1370, 1371, 1372, 1373, 1374, 1375, 1376, 1377, 1378, 1379, 1380, 1381, 1382, 1383, 1384, 1385, 1386, 1387, 1388, 1389, 1390, 1391, 1392, 1393, 1394, 1395, 1396, 1397, 1398, 1399, 1400, 1401, 1402, 1403, 1404, 1405, 1406, 1407, 1408, 1409, 1410, 1411, 1412, 1413, 1414, 1415, 1416, 1417, 1418, 1419, 1420, 1421, 1422, 1423, 1424, 1425, 1426, 1427, 1428, 1429, 1430, 1431, 1432, 1433, 1434, 1435, 1436, 1437, 1438, 1439, 1440, 1441, 1442, 1443, 1444, 1445, 1446, 1447, 1448, 1449, 1450, 1451, 1452, 1453, 1454, 1455, 1456, 1457, 1458, 1459, 1460, 1461, 1462, 1463, 1464, 1465, 1466, 1467, 1468, 1469, 1470, 1471, 1472, 1473, 1474, 1475, 1476, 1477, 1478, 1479, 1480, 1481, 1482, 1483, 1484, 1485, 1486, 1487, 1488, 1489, 1490, 1491, 1492, 1493, 1494, 1495, 1496, 1497, 1498, 1499, 1500, 1501, 1502, 1503, 1504, 1505, 1506, 1507, 1508, 1509, 1510, 1511, 1512, 1513, 1514, 1515, 1516, 1517, 1518, 1519, 1520, 1521, 1522, 1523, 1524, 1525, 1526, 1527, 1528, 1529, 1530, 1531, 1532, 1533, 1534, 1535, 1536, 1537, 1538, 1539, 1540, 1541, 1542, 1543, 1544, 1545, 1546, 1547, 1548, 1549, 1550, 1551, 1552, 1553, 1554, 1555, 1556, 1557, 1558, 1559, 1560, 1561, 1562, 1563, 1564, 1565, 1566, 1567, 1568, 1569, 1570, 1571, 1572, 1573, 1574, 1575, 1576, 1577, 1578, 1579, 1580, 1581, 1582, 1583, 1584, 1585, 1586, 1587, 1588, 1589, 1590, 1591, 1592, 1593, 1594, 1595, 1596, 1597, 1598, 1599, 1600, 1601, 1602, 1603, 1604, 1605, 1606, 1607, 1608, 1609, 1610, 1611, 1612, 1613, 1614, 1615, 1616, 1617, 1618, 1619, 1620, 1621, 1622, 1623, 1624, 1625, 1626, 1627, 1628, 1629, 1630, 1631, 1632, 1633, 1634, 1635, 1636, 1637, 1638, 1639, 1640, 1641, 1642, 1643, 1644, 1645, 1646, 1647, 1648, 1649, 1650, 1651, 1652, 1653, 1654, 1655, 1656, 1657, 1658, 1659, 1660, 1661, 1662, 1663, 1664, 1665, 1666, 1667, 1668, 1669, 1670, 1671, 1672, 1673, 1674, 1675, 1676, 1677, 1678, 1679, 1680, 1681, 1682, 1683, 1684, 1685, 1686, 1687, 1688, 1689, 1690, 1691, 1692, 1693, 1694, 1695, 1696, 1697, 1698, 1699, 1700, 1701, 1702, 1703, 1704, 1705, 1706, 1707, 1708, 1709, 1710, 1711, 1712, 1713, 1714, 1715, 1716, 1717, 1718, 1719, 1720, 1721, 1722, 1723, 1724, 1725, 1726, 1727, 1728, 1729, 1730, 1731, 1732, 1733, 1734, 1735, 1736, 1737, 1738, 1739, 1740, 1741, 1742, 1743, 1744, 1745, 1746, 1747, 1748, 1749, 1750, 1751, 1752, 1753, 1754, 1755, 1756, 1757, 1758, 1759, 1760, 1761, 1762, 1763, 1764, 1765, 1766, 1767, 1768, 1769, 1770, 1771, 1772, 1773, 1774, 1775, 1776, 1777, 1778, 1779, 1780, 1781, 1782, 1783, 1784, 1785, 1786, 1787, 1788, 1789, 1790, 1791, 1792, 1793, 1794, 1795, 1796, 1797, 1798, 1799, 1800, 1801, 1802, 1803, 1804, 1805, 1806, 1807, 1808, 1809, 1810, 1811, 1812, 1813, 1814, 1815, 1816, 1817, 1818, 1819, 1820, 1821, 1822, 1823, 1824, 1825, 1826, 1827, 1828, 1829, 1830, 1831, 1832, 1833, 1834, 1835, 1836, 1837, 1838, 1839, 1840, 1841, 1842, 1843, 1844, 1845, 1846, 1847, 1848, 1849, 1850, 1851, 1852, 1853, 1854, 1855, 1856, 1857, 1858, 1859, 1860, 1861, 1862, 1863, 1864, 1865, 1866, 1867, 1868, 1869, 1870, 1871, 1872, 1873, 1874, 1875, 1876, 1877, 1878, 1879, 1880, 1881, 1882, 1883, 1884, 1885, 1886, 1887, 1888, 1889, 1890, 1891, 1892, 1893, 1894, 1895, 1896, 1897, 1898, 1899, 1900, 1901, 1902, 1903, 1904, 1905, 1906, 1907, 1908, 1909, 1910, 1911, 1912, 1913, 1914, 1915, 1916, 1917, 1918, 1919, 1920, 1921, 1922, 1923, 1924, 1925, 1926, 1927, 1928, 1929, 1930, 1931, 1932, 1933, 1934, 1935, 1936, 1937, 1938, 1939, 1940, 1941, 1942, 1943, 1944, 1945, 1946, 1947, 1948, 1949, 1950, 1951, 1952, 1953, 1954, 1955, 1956, 1957, 1958, 1959, 1960, 1961, 1962, 1963, 1964, 1965, 1966, 1967, 1968, 1969, 1970, 1971, 1972, 1973, 1974, 1975, 1976, 1977, 1978, 1979, 1980, 1981, 1982, 1983, 1984, 1985, 1986, 1987, 1988, 1989, 1990, 1991, 1992, 1993, 1994, 1995, 1996, 1997, 1998, 1999, 2000, 2001, 2002, 2003, 2004, 2005, 2006, 2007, 2008, 2009, 2010, 2011, 2012, 2013, 2014, 2015, 2016, 2017, 2018, 2019, 2020, 2021, 2022, 2023, 2024, 2025, 2026, 2027, 2028, 2029, 2030, 2031, 2032, 2033, 2034, 2035, 2036, 2037, 2038, 2039, 2040, 2041, 2042, 2043, 2044, 2045, 2046, 2047, 2048, 2049, 2050, 2051, 2052, 2053, 2054, 2055, 2056, 2057, 2058, 2059, 2060, 2061, 2062, 2063, 2064, 2065, 2066, 2067, 2068, 2069, 2070, 2071, 2072, 2073, 2074, 2075, 2076, 2077, 2078, 2079, 2080, 2081, 2082, 2083, 2084, 2085, 2086, 2087, 2088, 2089, 2090, 2091, 2092, 2093, 2094, 2095, 2096, 2097, 2098, 2099, 2100, 2101, 2102, 2103, 2104, 2105, 2106, 2107, 2108, 2109, 2110, 2111, 2112, 2113, 2114, 2115, 2116, 2117, 2118, 2119, 2120, 2121, 2122, 2123, 2124, 2125, 2126, 2127, 2128, 2129, 2130, 2131, 2132, 2133, 2134, 2135, 2136, 2137, 2138, 2139, 2140, 2141, 2142, 2143, 2144, 2145, 2146, 2147, 2148, 2149, 2150, 2151, 2152, 2153, 2154, 2155, 2156, 2157, 2158, 2159, 2160, 2161, 2162, 2163, 216

Council reported that during 1968/69, dwelling approvals showed most residential development was taking place in the northern part of the shire. Alexandra Hills had 31 approvals, up from 7 the previous year;

In 1969 council removed the old 1885 Shire Office buildings, which were repurposed as Guide huts in Victoria Point and Wellington Point, and built a new brick building on the same site.

1970s

In the local government election run-up, Shire Chairman Dick Wood announced Council was committed to seeing the Raby Bay canal scheme eventuate. Other priorities were extending parks and recreation areas, especially sporting grounds, in the shire, a public swimming pool, and tree planting, especially along Finucane Rd.

Many subdivisions were approved in 1971, including Windemere Gardens and Vienna Woods estates in Alexandra Hills. The area was starting to boom.

In the early 1970s, Judy and Colin Holt built the Red Shop on the corner of Finucane and Allenby Roads, then later, the Valentine Road shops, running the 4-Square store there. After Colin died in 1975, Judy Holt became a Redland Shire Councillor from 1979 – 1988.

Alexandra Hills State School opened in 1975 with an enrolment of 225. The following year enrolments had almost doubled, to 403. Figures showed Alexandra Hills was the fastest growing area of the Shire, with 12% of the Shire's population.

In 1977 Alexandra Hills residents complained about the lack of facilities in their area, including shops, child care centres and preschools. The Alexandra Hills preschool opened in September that year, as well as the Oaklands St Child Care Centre.

Capalaba High School opened that year, with about 200 students. Alexandra Hills students could now attend either Cleveland or Capalaba.

In 1978 the Alexandra Hills scout group was formed.

Police Officer Greg Tutt looks at plans for the Alexandra Hills Scout Den with 2 scouts.

HP1460



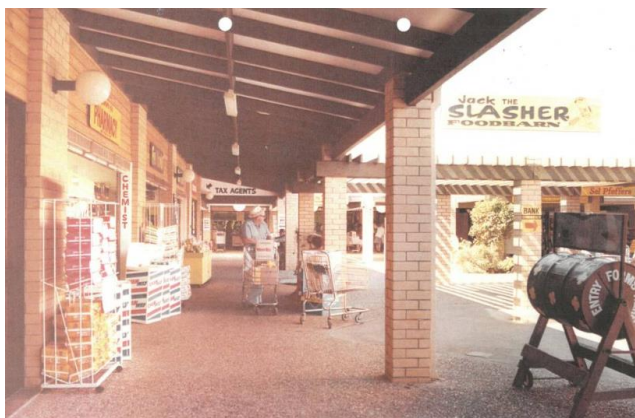
The Alexandra Hills Shopping Centre opened in November 1979.



HP1016



RCB Images



American comedienne Phyllis Diller performed at the opening of the Alexandra Hills shopping centre in 1979.

At the time, the small shopping centre, housing the *Jack the Slasher* food barn, was the first drive-in shopping centre in the Redlands.

The library began a mobile service in 1979, including stops at Valentine Road and Cumberland Drive.



The first mobile library, a converted bus, in about 1992.

HP7085



April 1979; the first church; the future church building arrives at the site of St Anthony's Church.

HP2202



The first mass was held on Holy Thursday, 1979

HP2206



The first St Anthony's school buildings were also constructed in 1979.

HP2238

1980s:

St Anthony's Catholic school in Alexandra Hills opened for the first time, with 167 students in Grades 1-4. About 55 were Grade 1 enrolments.

Work began on the Lota-Thorneside rail link; the trains were returning to the Redlands after a 25 year break. State Member John Goleby said a carefully planned public transport system was the Shire's most urgent need in the 1980s. He canvassed the idea of a rail link from Cleveland to the southern end of the Shire.

Councillor Peter Hunter called for the proposed rail link to travel via Capalaba and Alexandra Hills as these areas were the fastest growing in the Shire. He also wanted to see the rail link extended to Redland Bay. In October the State Government announced it would fund the entire Redlands rail link. Council had intended to contribute towards the costs.

A councillor and local resident Don Burnett called for a campaign of tree planting and education to preserve the Shire's koala population. They suggested the area be called the Koala Coast.

Alexandra Hills residents organised a petition and other protests against a proposed tavern to be built next to the Oaklands Street childcare centre. Residents were concerned about the safety of the children. They also believed the tavern would give children and young people the wrong ideas about entertainment.

Redland Shire Council proposed calling tenders for a community hall in Alexandra Hills. The Alexandra Hills Hall was officially opened in December 1981 by local councillor Judy Holt. It cost \$119,500 to construct. The builder was Sarri Constructions.

The Alexandra Hills Post Office opened in the Alexandra Hills shopping centre in 1982, and by 1983 the Shire's population was about 52,000. Alexandra Hills was home to 6,750 people.

In 1984 a tavern was proposed for the corner of Cambridge Drive and Oaklands Street, four years after Council had rejected a similar proposal. This second proposal was also rejected.

State Government approved a budget allocation to build a senior college offering senior high school subjects and trade courses at Alexandra Hills. This college, now known as the Bayside Campus of the Moreton Institute of TAFE, was one of only two senior colleges planned for Queensland. Alexandra Hills residents were angry because they wanted a high school for years 8-12 rather than a senior college.



Alexandra Hills TAFE College

HP1594

Vienna Woods state school opened in January 1985. That year the Shire got its first wheelie bins.



A site at the corner of Finucane and McDonald Roads was proposed as the site for the new Redlands Hospital.

The Alexandra Hills Hotel is now on the site in the background.

RP1094

In 1985 a Blue Nursing service was set up in the Redlands. The centre operated at first from the Uniting Church Hall on Passage Street, Cleveland, until in 1987 it moved to its own premises on Joe Wood Court, Alexandra Hills. The centre was called the John Goleby Blue Nursing Complex in memory of former State MP John Goleby.

Alexandra Hills State High School opened.



Official opening of Alexandra Hills College by Minister of Education Lin Powell, 1987

RP1569

Redlands Church of Christ
Hall opening –

Eric Shaw, Paul Clauson,
Local Minister Alby
Taylor, President of the
Church of Christ Qld,
Colin Smith and Shire
Chairman Merv Genrich,
1987



RP1366

Work began in 1988 on the Alexandra Hills hotel at the corner of McDonald and Finucane Rds.



RP1709

Koala numbers gradually increased in and around the Redlands and for a time we were widely known for our large koala population, and we were part of the 'koala coast'.

However from the 1960s, the Redlands had experienced a 'people' population boom from 9,000 in 1961 to more 150,000 over the following 50 years, many of the new residents settling in Alexandra Hills.

This inevitably meant an increase in threats to the koala population, with trees being cleared for housing, as well as roads and pets creating often fatal hazards. Disease also became a factor.



A tree lopper chases a koala out of a tree on a site being cleared in Birkdale 1992.

RP 0691

People protested against bush clearing for houses throughout the 1980s and 1990s.



Residents protesting about development on koala land in Alexandra Hills, 1989

RP0709

NARDEEBIE CENTRE OF CARE-HOSTEL
 WAS OFFICIALLY OPENED ON
 JULY 21, 1980
 BY
 REV. BRIAN WHITLOCK
 (ASSISTANT MINISTER OF THE GOVERNMENT OF QUEENSLAND)
 THE SITE WAS DEDICATED BY REV. BARRY DANGERFIELD
 (ASSISTANT MINISTER OF THE GOVERNMENT OF QUEENSLAND)
 THE QUEENSLAND GOVERNMENT
 HAS CONTRIBUTED WITH FINANCIAL ASSISTANCE FROM THE
 HEALTH DEPARTMENT
 TO THE NARDEEBIE CENTRE OF CARE-HOSTEL
 FOR THE ELDERLY
 THE QUEENSLAND GOVERNMENT

FOUNDATION STONE LAID
 BY
 MR. CLYDE CILMOUR, I.S.O.
 DECEMBER 17, 1989.
 SITE DEDICATED BY
 REV. BARRY DANGERFIELD, B.D.

RP0154



RP0874

1990s

On 4 June 1990 the John Goleby Blue Nursing Complex's Nandeebie Centre of Care hostel received its first residents. Its independent units opened on 1 October that year.



Aerial of Nandeebie Aged Care, 1993. Winchester Road in foreground.

HP7448

In 1991 Shire Chairman Len Keogh commenced a campaign to have Redland Shire accorded city status.

Hilliard State School opened its doors on 29 January.



Site of Hilliard State School, 1990

HP1519

In 1992 the Shire's population reached 80,695, up 37% from the 1986 Census. The most heavily populated suburb was Alexandra Hills (14,548), and new housing estates were popping up at a fast pace.



Land release and new house at Windemere Gardens, 1992

RP0753

Buckingham Gardens aged care hostel at Alexandra Hills opened in 1992, and so did the Vienna Woods Leisure Centre.



Donald Stewart, Ben Humphreys, Laurel Power, resident Edith Bridges, Marilyn McMahon, Shire Chairman Len Keogh at the opening of Buckingham Gardens aged care facility, 1992

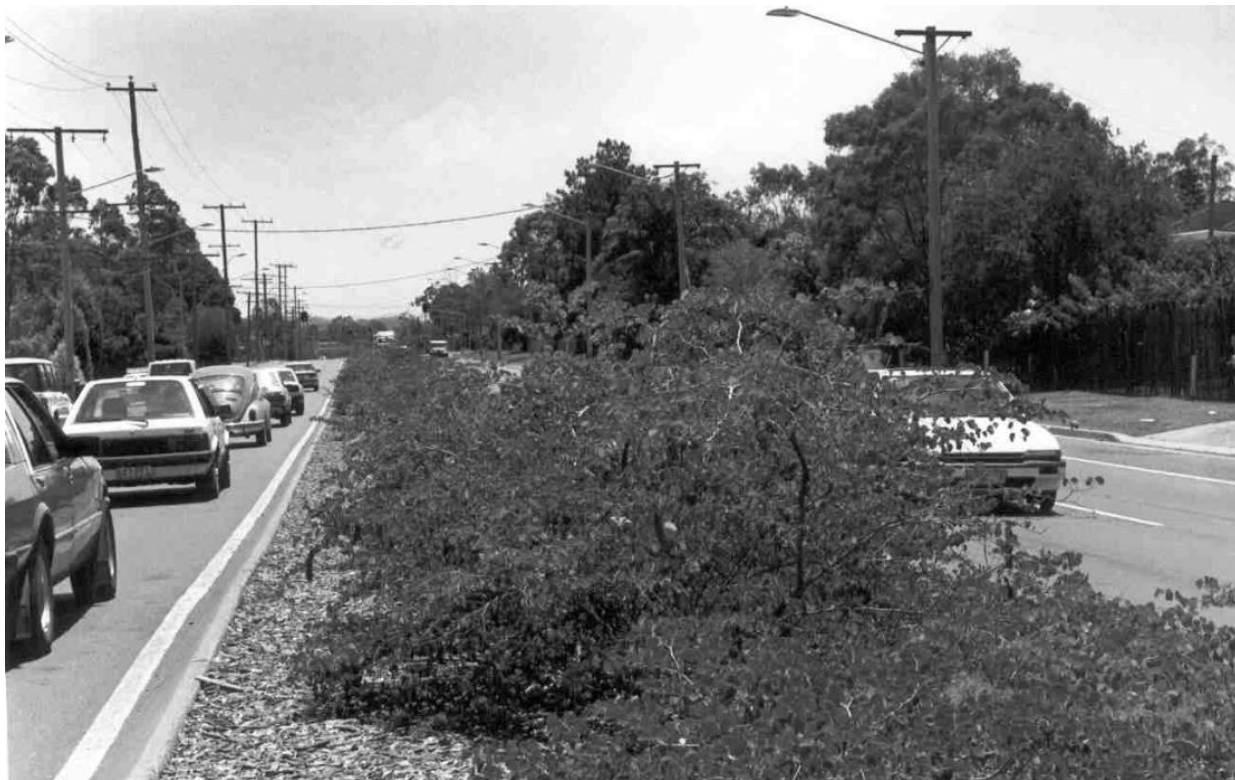
RP0164



Vienna Woods Leisure Centre – swimming pool, Heinze Linke, 1992

RP1516

By 1993, Finucane Road was a 4-lane road through Alexandra Hills



HP1446



Alexandra Hills Preschool, 1998

RP1466

Alexandra Hills Scout Group celebrated its 21st birthday in 1999.

2000s

The population of the Redlands reached 111,585 in 2000. Alexandra Hills had the highest population with 18,096, followed by (in order) Capalaba, Victoria Pt, Birkdale, Cleveland, Wellington Pt, Thornlands, Redland Bay, Ormiston, the Islands (Southern Moreton Bay Islands, North Stradbroke and Coochiemudlo), Mt Cotton/Sheldon, and Thorneside.

Redlands Chamber of Commerce and some Redland Shire councillors debated whether transport corridors reserved for future major roads would be better kept as parkland or bushland. The debate focused on a road corridor right down the middle of the southern part of Alexandra Hills, parallel to Finucane Road, extending Moreton Bay Road through to Long Street in Cleveland.



Alexandra Hills State High School PEP Band, 2000

HP7118

The closure of the Commonwealth Bank branch at Alexandra Hills in 2001 prompted a public outcry.

The 53-hectare Greater Glider conservation area between Windemere and Vienna Roads on the northern side of Redland Bay Roads was formally recognised in 2002. Other parks and wildlife areas now include the Scribbly Gums Conservation area, Squirrel Glider Conservation area, the Hilliards Creek Platypus Corridor, Swamp Box Conservation area, Valentine Road Park, Keith Surridge Park (home to the Alexandra Hills Australian Football Club) and many smaller 'pocket' parks.

A Save the Koala Day function was disrupted by protesters concerned about the expansion of the Shire's development footprint.

Total fire ban declared in October after a series of fires at Thornlands, Capalaba and Alexandra Hills.

On 11 September 2013 the first public meeting was held in the Alexandra Hills Men's Shed, on the Birkdale side of William Street and the Shed was officially opened.



HP7246



Google image

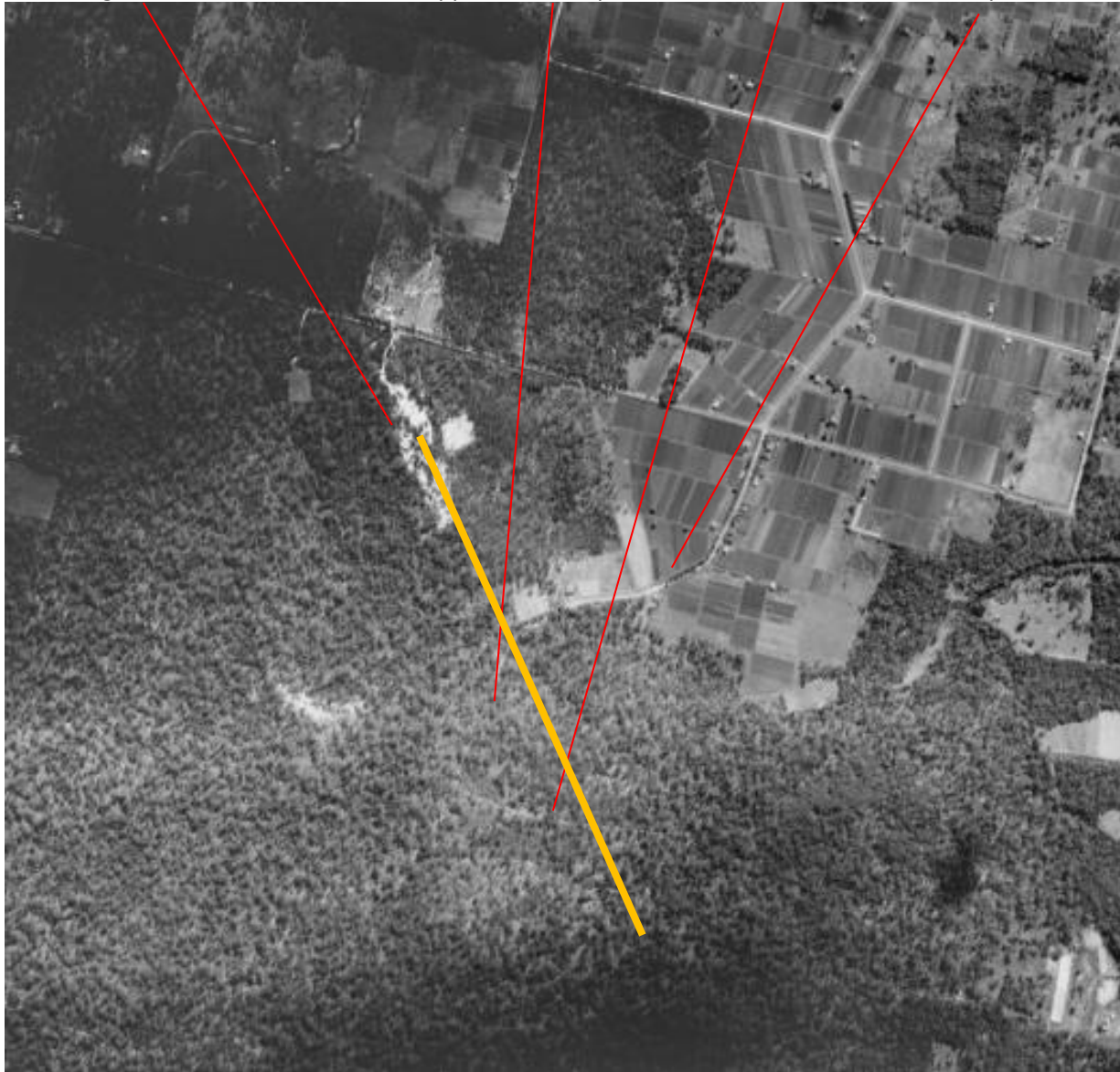


A cannon ball was recently found in North-east of Topaz Street and Allenby Road Alexandra Hills by a local resident. An expert from the Redlands Museum said that it was definitely a cast iron solid cannon ball. It has been the first reported finding of an actual cannon ball in the Redlands Area. It measured about 8 cm in diameter and weighed 1kg, and it was heavily corroded. It is estimated that it could have been in the ground for about 150 years.

Redland Researcher Feb 2021

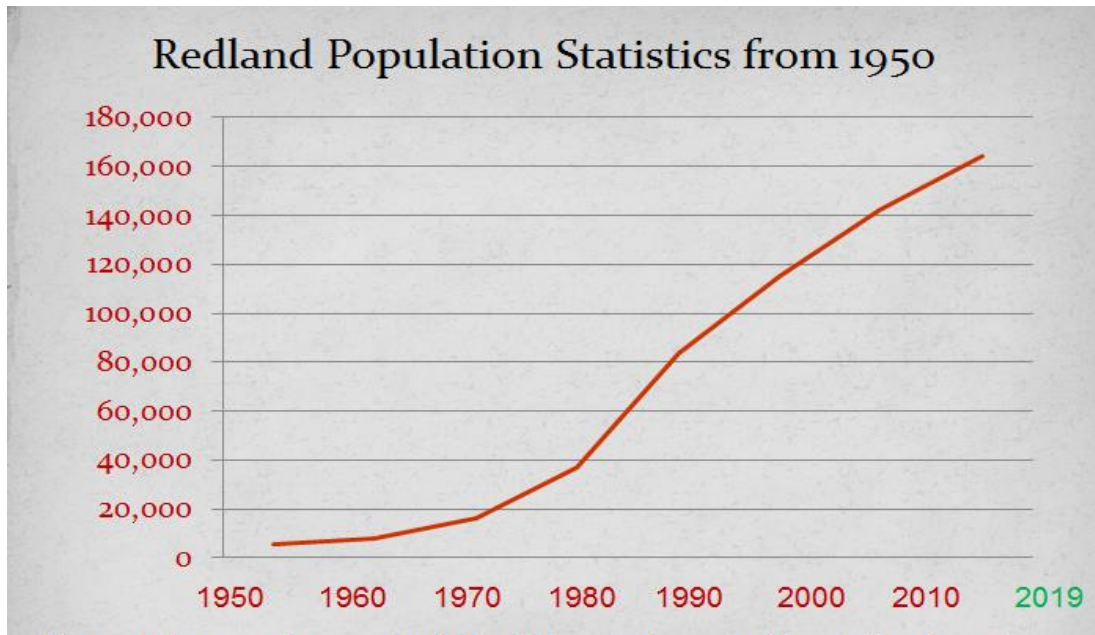
Military and Naval exercises were held annually all across greater Brisbane region from at least the 1880s. It is possible that the cannon ball was fired at the nearby rifle range that had closed in 1919, now the Birkdale Waste Transfer Station/Judy Holt Park. A QImagery 1946 aerial shows that Topaz Street is along a line from the old range:

Rifle Range Old Cleveland Road East – Approximate Topaz Street - McMillan Road – Allenby Road



Trajectory from rifle range

Up until 1970, growth in the Redlands had been slow and steady, and then it boomed. There had been no new schools opened since 1916, until Cleveland High School opened 44 years later in 1962. The next primary school, Alexandra Hills, didn't open until 1975. That was the start of a boom, during which time 26 new schools have opened, giving us a total of 37 schools.



So what had happened to trigger this rapid growth?

- We had a permanent water supply after the Leslie Harrison Dam was built (**1968**).
- Sewerage resolved the many drainage problems that had existed throughout the Shire, and which had been preventing high-density development (**1976**).
- A four-lane road was built between Capalaba and Brisbane (**1982**) then extended to Cleveland (**1988**) making a daily commute much faster, and the Redlands became an attractive prospect for those wishing to live outside of the city, while still being able to work there.
- The trains returned (**1986**) which added another option for commuters.
- The Commonwealth Games (**1982**) and Expo 88 (**1988**) brought many visitors to the area along the new fast roads, and many stayed or came back later to live in the Redlands.
- As farmland was developed, the infrastructure that had existed to ensure produce reached markets in prime condition had started to disintegrate; this in turn made it harder for the remaining farms to sustain their viability, and so the temptation to sell to developers became harder for farmers to resist as the demand for housing increased.

Alexandra Hills 1955

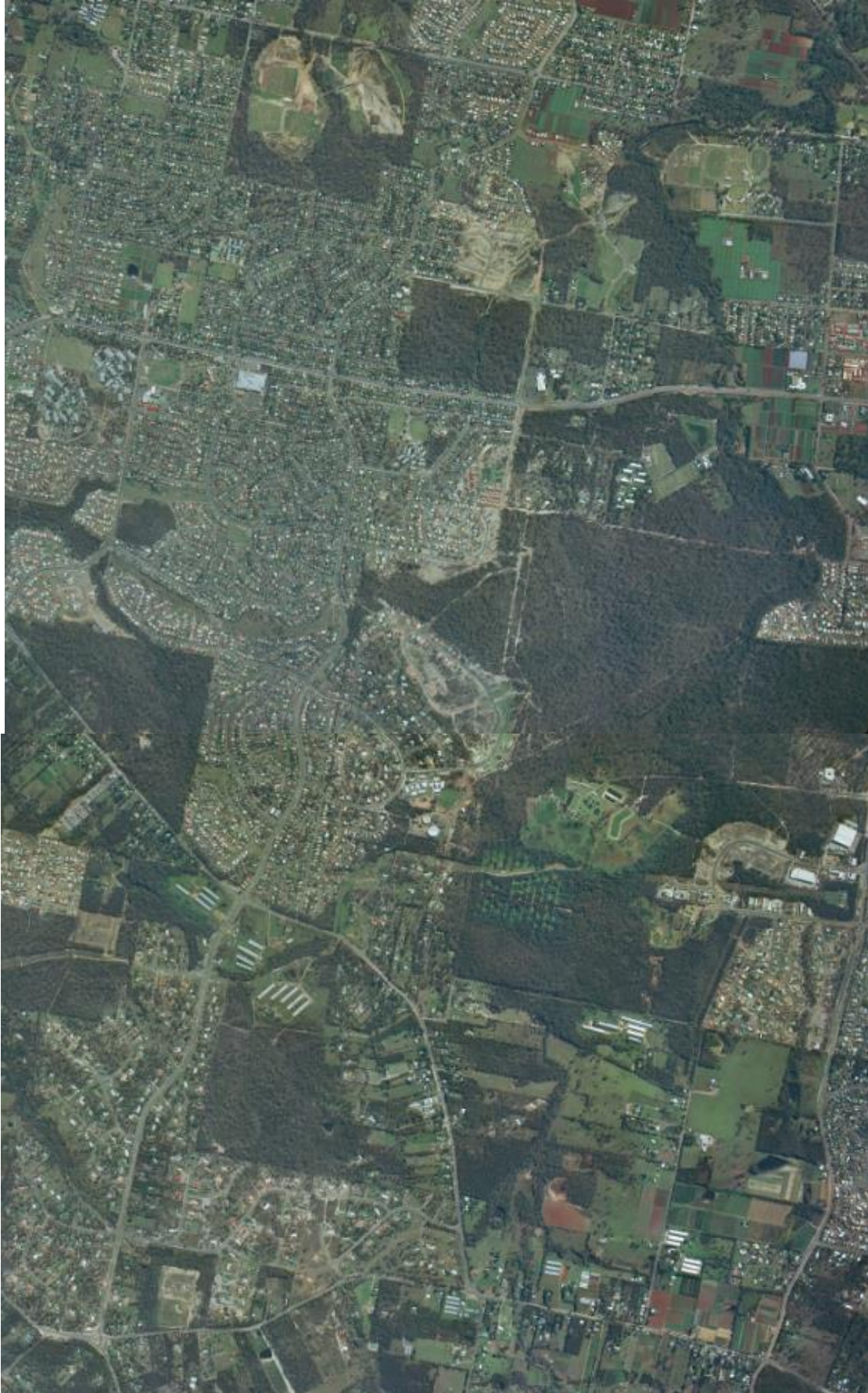


Top L-R: [Old] Cleveland Road; **Centre L-R:** Finucane Road; **Centre to bottom L-R:** Redland Bay Road; **Bottom Left:** Boundary Road; **Centre Right:** Redlands District Rifle Range Weippin Street Cleveland.

Alexandra Hills 1982



Alexandra Hills 1993



Alexandra Hills 2020



Sources:

- Mary Howells: *Places of the Redlands*
- Tracy Ryan: *Redlands master timeline 1770 – 2010*
- Cleveland Shire Council: Minutes and Rates records
- Tingalpa Shire Council: Minutes and Rates records
- Redland Shire Council: Minutes and Rates records
- Rural Press: Redland Times and Bayside Bulletin
- Redland Libraries: Local History Collections including Oral Histories and Images
- Queensland State Library
- Queensland State Archives
- National Library of Australia: Trove
- National Archives of Australia
- Queensland Births, Deaths & Marriages
- Historical Title Deeds
- Post Office directories
- Ancestry Library edition
- Redland City Council Cemeteries Register
- Queensland Heritage Register
- Queensland Government historical maps and aerial imagery
- Other sources as noted in document

The document has been prepared for general reading rather than as an academic document. For that reason, referencing has not been included in it.

However, all research has been thoroughly and diligently undertaken to academic standards by using primary sources as much as possible; existing academic papers, theses, and books; and by cross-checking information across more than one source. Personal recollections from memoirs or Oral Histories have all been cross-checked against historical records unless otherwise stated.

Detailed references are available on request.

Names and places, and language:

Names, places and language have been included as recorded in their original context. While every effort has been made to avoid offensive material, historical records reflect the norm that existed at that time, and it is important that they are reproduced truthfully.

Aboriginal Place names are acknowledged:

Cullen Cullen	- Wellington Point, Birkdale & Thorneside
Erobin	- King Island
Nandeebie or Indillie	- Cleveland, Thornlands, Ormiston, Alexandra Hills
Doobawah	- Raby Bay
Quandamooka	- Moreton Bay
Kapallaba	- Capalaba
Joonggabbin	- Sheldon
Jungalpin or Tungipin	- Mount Cotton
Talwalpin	- Redland Bay
Warrer Warrer	- Victoria Point
Eprapa	- Pinklands
Minjerribah	- Stradbroke Island
Canaipa	- Russell Island
Jencoomercha	- Macleay Island
Goochie mudlo	- Coochiemudlo Island
Ngudooroo	- Lamb Island
Tindappah	- Garden Island
Teerk Roo Ra	- Peel Island
Noogoon	- St Helena Island
Milwarpin	- Green Island
Mubanbila	- Bird Island
Guwawanewa	- Goat Island
Perulpa	- Perulpa Island
Karragarra	- Karragarra Island
Mulgumpin	- Moreton Island
Pulan	- Amity Point
Mooloombah	- Point Lookout
Goompi	- Dunwich
Karboora	- Blue Lake
Bummiera	- Brown Lake

To find more information about some of the stories included in this timeline, search in the library catalogue via the [Local History](#) link or by clicking on the **Libraries** or **Discover Redlands Coast** link on the Redland City Council website <https://www.redland.qld.gov.au> and following the links to Local History.