

EVACUATION SIGN



Victoria Point Community Hall
325 Colburn Avenue
Victoria Point

SAFETY CONSIDERATIONS

- R**emove persons from immediate danger
- A**lert nearby staff and members of the public and call 000 (Operate manual call point if applicable)
- C**onfine fire and smoke. Close windows and doors (if safe). Keep low, under the smoke
- E**xtinguish and control the fire (if safe to do so)

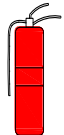
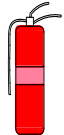
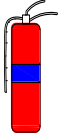
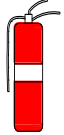

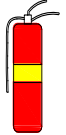
EVACUATION PROCEDURES

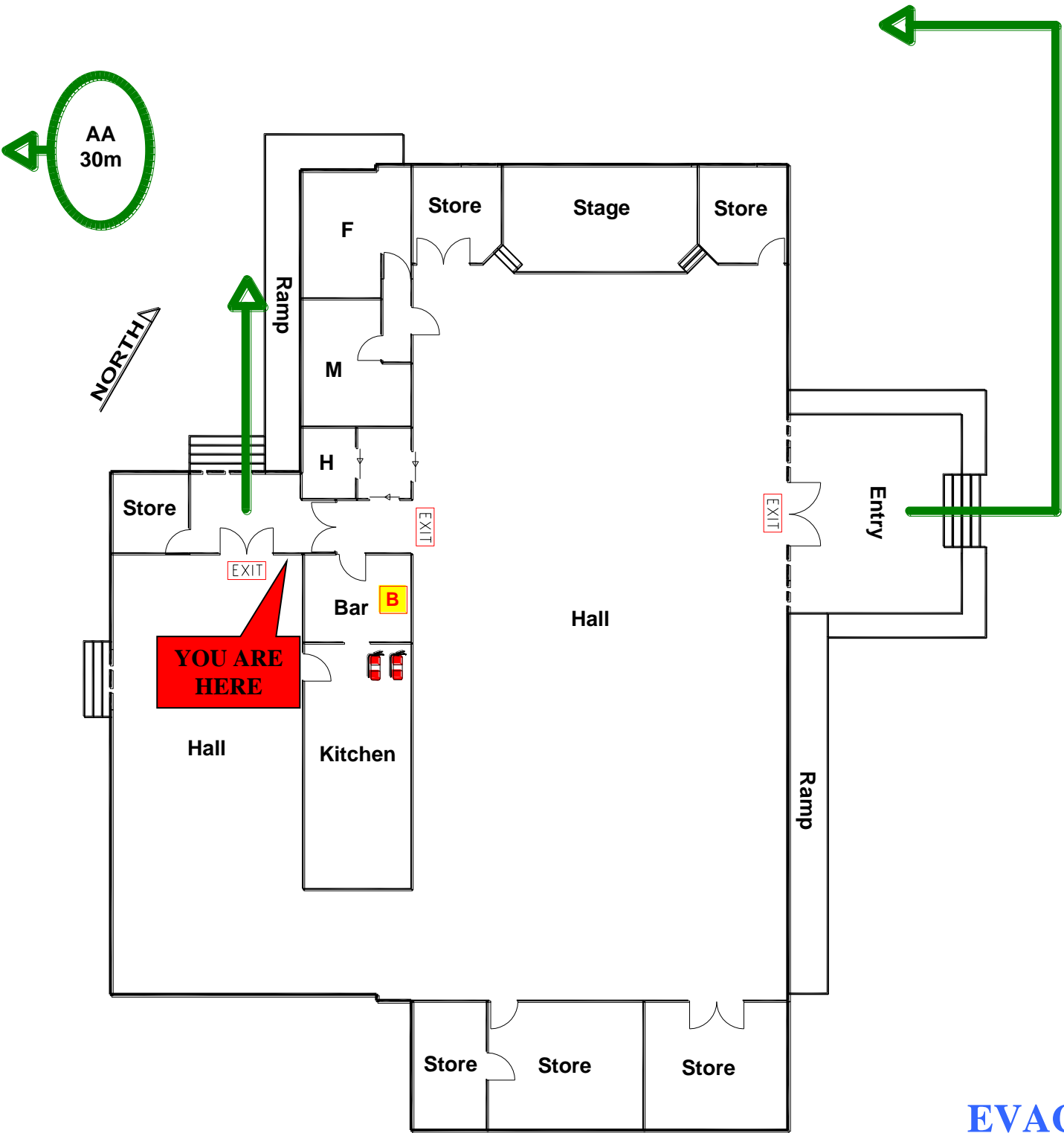
- Follow all instructions given by Wardens or Fire Officers
- Leave immediately by the nearest safe exit
- Move quickly do not run
- If possible, close door behind you
- Report to your designated assembly area
- Do not leave the assembly area until the Chief Warden gives the “all-clear”
- If any injuries are sustained, notify a warden
- Advise a Warden immediately if you are aware of people trapped in the building

FIRE EXTINGUISHERS

OPERATING INSTRUCTIONS

Pull the pin **A**im the nozzle **S**queeze the trigger **S**weep the base of the fire

FIRE EXTINGUISHERS							
							
		WATER	WET CHEM.	FOAM	DRY CHEM.	CO2	VAPR. LIQUID
A	ORDINARY COMBUSTIBLES	✓	✓	✓	✓ ABE	✗	✓
B	COMBUSTIBLE LIQUIDS	✗	✗	✓	✓ ABE	✓	✓
C	FLAMMABLE GASES	✗	✗	✗	✓ ABE	✗	✗
E	ENERGISED ELECTRICAL EQU	✗	✗	✗	✓ ABE	✓	✓
F	COOKING OIL & FAT	✗	✓	✓	✗ ABE	✓	✗



Red-e-Map Coordinates
x (Easting): 528900
y (Northing): 6948800

EVACUATION DIAGRAM

- AA** ASSEMBLY AREA
- EXIT** EXIT
-  EXTINGUISHER
- B** FIRE BLANKET
-  FIRE HOSE
-  HYDRANT
-  WARDEN