

# EVACUATION SIGN

Email: [rcc@redland.qld.gov.au](mailto:rcc@redland.qld.gov.au)

Phone: 07 3829 8999

Redland Memorial Hall  
44 Smith Street  
Cleveland

Red-e-Map Coordinates  
x (Easting): 525700  
y (Northing): 6954500

## SAFETY CONSIDERATIONS

- R**emove persons from immediate danger
- A**lert nearby staff and members of the public and call 000 (Operate manual call point if applicable)
- C**onfine fire and smoke. Close windows and doors (if safe). Keep low, under the smoke
- E**xtinguish and control the fire (if safe to do so)

## EVACUATION PROCEDURES

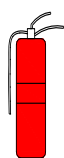
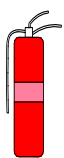




- Follow all instructions given by Wardens or Fire Officers
- Leave immediately by the nearest safe exit
- Move quickly do not run
- If possible, close door behind you
- Report to your designated assembly area
- Do not leave the assembly area until the Chief Warden gives the "all-clear"
- If any injuries are sustained, notify a warden
- Advise a Warden immediately if you are aware of people trapped in the building

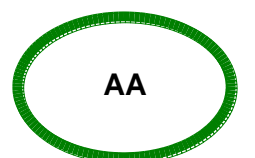
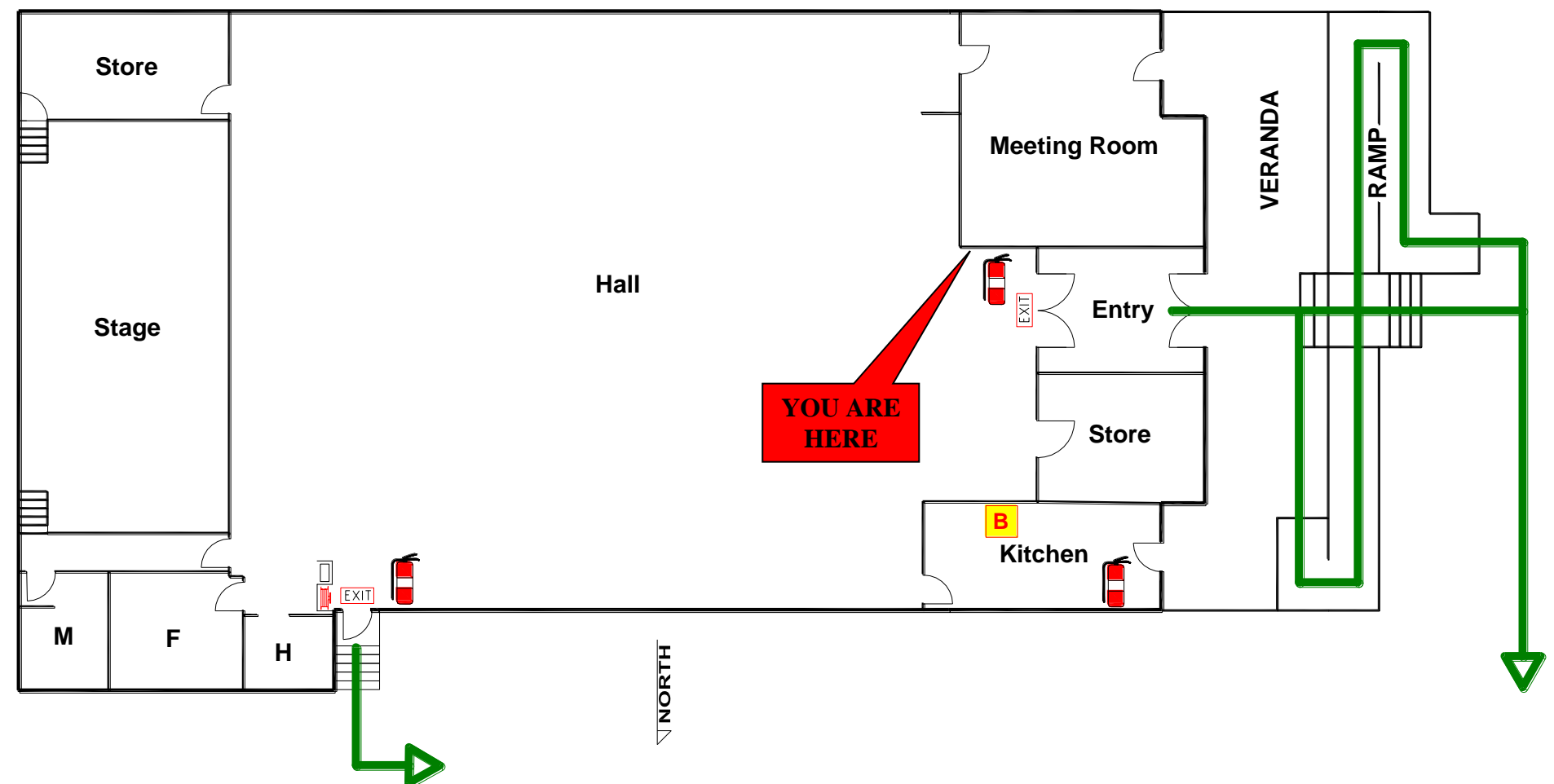
## FIRE EXTINGUISHERS

## OPERATING INSTRUCTIONS

**P**ull the pin **A**im the nozzle **S**queeze the trigger **S**weep the base of the fire

### FIRE EXTINGUISHERS

								
		WATER	WET CHEM.	FOAM	DRY CHEM.	CO2	VAPR. LIQUID	
<b>A</b>	ORDINARY COMBUSTIBLES	✓	✓	✓	✓ ABE	✗	✓	
<b>B</b>	COMBUSTIBLE LIQUIDS	✗	✗	✓	✓ ABE	✓	✓	
<b>C</b>	FLAMMABLE GASES	✗	✗	✗	✓ ABE	✗	✗	
<b>E</b>	ENERGISED ELECTRICAL EQU	✗	✗	✗	✓ ABE	✓	✓	
<b>F</b>	COOKING OIL & FAT	✗	✓	✓	✗ ABE	✓	✗	



## EVACUATION DIAGRAM

 AA ASSEMBLY AREA

 EXIT EXIT

 EXTINGUISHER

 B FIRE BLANKET

 FIRE HOSE

 HYDRANT

 WARDEN