

EVACUATION SIGN

Birkdale School of Arts Hall
101 Birkdale Road
Birkdale

Red-e-map Coordinates
x (Easting): 521050
y (Northing): 6958600

SAFETY CONSIDERATIONS

- Remove persons from immediate danger
- Alert nearby staff and members of the public and call 000 (Operate manual call point if applicable)
- Confine fire and smoke. Close windows and doors (if safe). Keep low, under the smoke
- Extinguish and control the fire (if safe to do so)


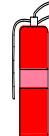




EVACUATION PROCEDURES

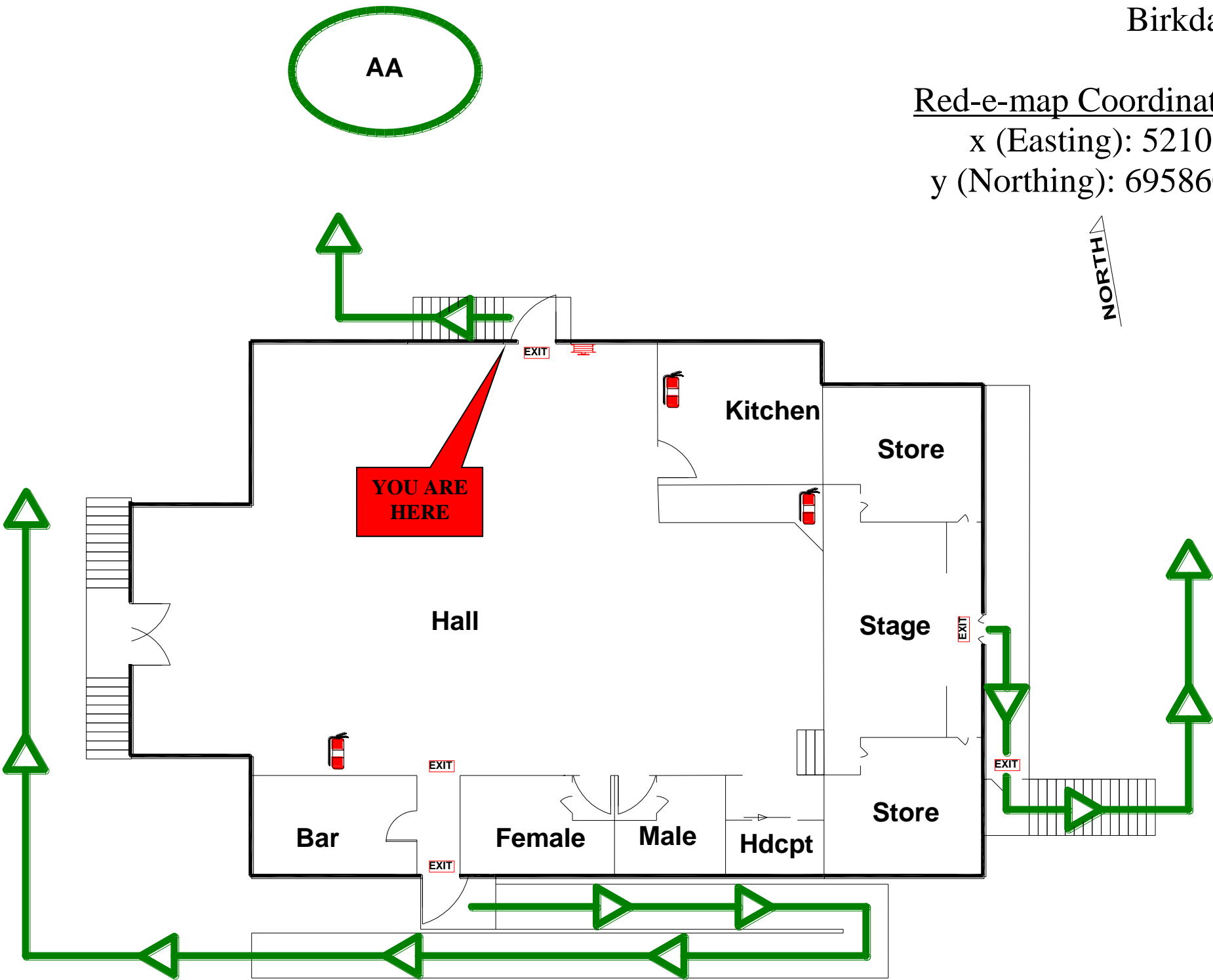
- Follow all instructions given by Wardens or Fire Officers
- Leave immediately by the nearest safe exit
- Move quickly do not run
- If possible, close door behind you
- Report to your designated assembly area
- Do not leave the assembly area until the Chief Warden gives the “all-clear”
- If any injuries are sustained, notify a warden
- Advise a Warden immediately if you are aware of people trapped in the building

FIRE EXTINGUISHERS

OPERATING INSTRUCTIONS

Pull the pin Aim the nozzle Squeeze the trigger Sweep the base of the fire

FIRE EXTINGUISHERS							
							
		WATER	WET CHEM.	FOAM	DRY CHEM.	CO2	VAPR. LIQUID
A	ORDINARY COMBUSTIBLES	✓	✓	✓	✓ ABE	✗	✓
B	COMBUSTIBLE LIQUIDS	✗	✗	✓	✓ ABE	✓	✓
C	FLAMMABLE GASES	✗	✗	✗	✓ ABE	✗	✗
E	ENERGISED ELECTRICAL EQU	✗	✗	✗	✓ ABE	✓	✓
F	COOKING OIL & FAT	✗	✓	✓	✗ ABE	✓	✗



UPPER FLOOR

EVACUATION DIAGRAM