

EVACUATION SIGN



Email: rcc@redland.qld.gov.au
Phone: 07 3829 8999

Redland City Council
Dunwich Public Hall
Junner Street, Dunwich
North Stradbroke Island

Red-e-map Coordinates
x (Easting): 539900
y (Northing): 6957960

SAFETY CONSIDERATIONS

- Remove persons from immediate danger
- Alert nearby staff and members of the public and call 000 (Operate manual call point if applicable)
- Confine fire and smoke. Close windows and doors (if safe). Keep low, under the smoke
- Extinguish and control the fire (if safe to do so)


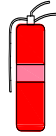

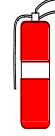
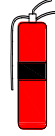

EVACUATION PROCEDURES

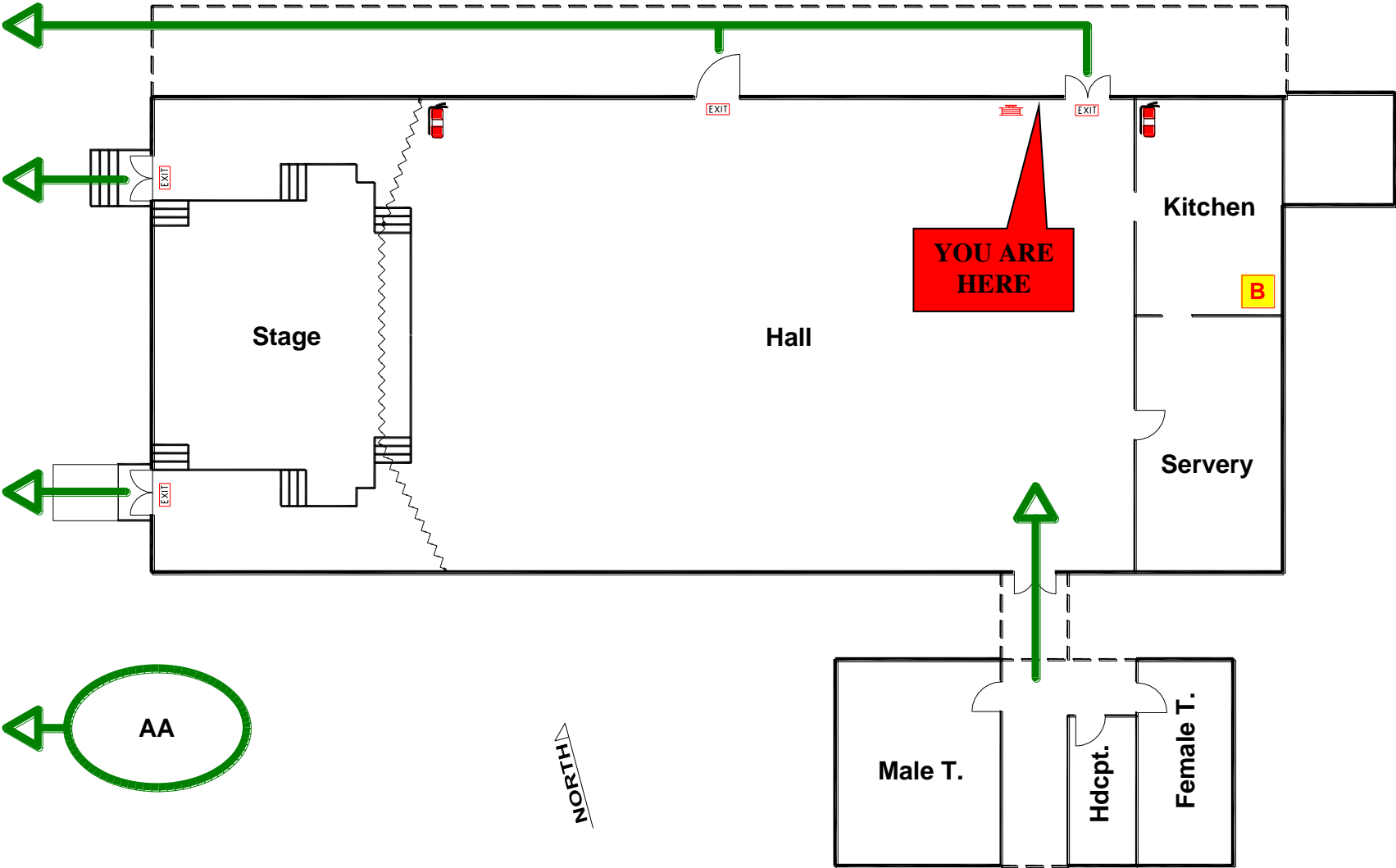
- Follow all instructions given by Wardens or Fire Officers
- Leave immediately by the nearest safe exit
- Move quickly do not run
- If possible, close door behind you
- Report to your designated assembly area
- Do not leave the assembly area until the Chief Warden gives the “all-clear”
- If any injuries are sustained, notify a warden
- Advise a Warden immediately if you are aware of people trapped in the building

FIRE EXTINGUISHERS

OPERATING INSTRUCTIONS

Pull the pin Aim the nozzle Squeeze the trigger Sweep the base of the fire

FIRE EXTINGUISHERS								
								
		WATER	WET CHEM.	FOAM	DRY CHEM.	CO2	VAPR. LIQUID	
A	ORDINARY COMBUSTIBLES	✓	✓	✓	✓ ABE	✗	✓	
B	COMBUSTIBLE LIQUIDS	✗	✗	✓	✓ ABE	✓	✓	
C	FLAMMABLE GASES	✗	✗	✗	✓ ABE	✗	✗	
E	ENERGISED ELECTRICAL EQU	✗	✗	✗	✓ ABE	✓	✓	
F	COOKING OIL & FAT	✗	✓	✓	✗ ABE	✓	✗	



EVACUATION DIAGRAM

 ASSEMBLY AREA

 EXIT

 EXTINGUISHER

 FIRE BLANKET

 FIRE HOSE

 HYDRANT

 WARDEN