

# EVACUATION SIGN

## EVACUATION PROCEDURES

- Follow all instructions given by Wardens or Fire Officers
- Leave immediately by the nearest safe exit
- Move quickly, do not run
- If possible, close doors behind you
- Report to your designated assembly area
- Do not leave the assembly area until the Chief Warden gives the "all clear"
- If any injuries are sustained, notify a Warden
- Advise a Warden immediately if you are aware of people trapped in the building

## SAFETY CONSIDERATIONS



**R**emove persons from immediate danger.



**A**lert nearby staff and members of the public and call 000 (Operate manual call point if applicable)



**C**onfine fire and smoke. Close windows and doors (if safe). Keep low, under the smoke.

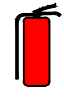
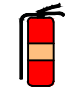
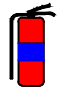
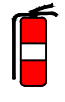





**E**xtinguish and control the fire (if safe to do so).

## FIRE EXTINGUISHERS

### OPERATING INSTRUCTIONS

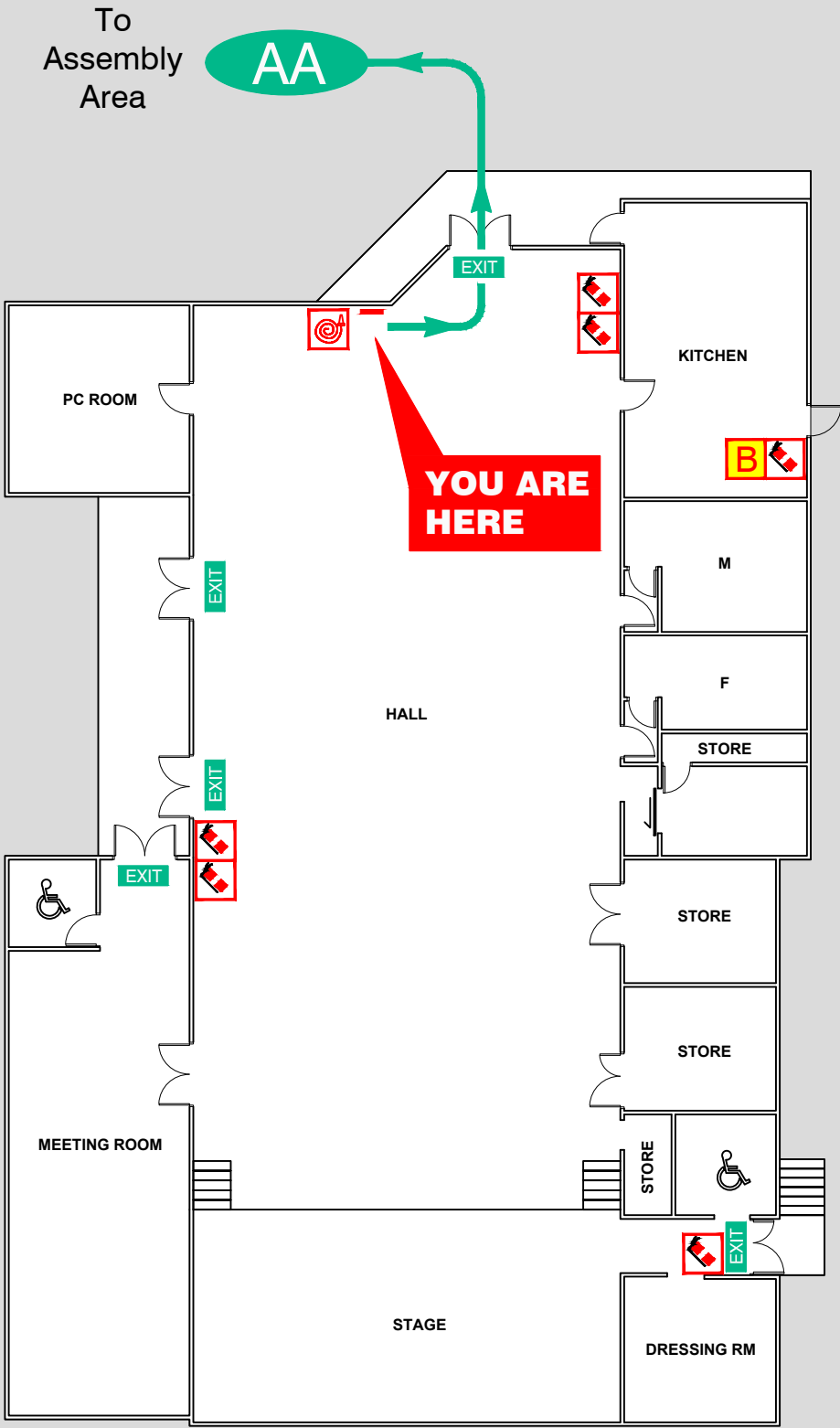
Pull the pin **A**im the nozzle **S**queeze the trigger **S**weep the base of the fire

							
<b>A</b> Ordinary Combustible (Wood, Paper, Plastic, etc)	✓ MOST SUITABLE	✓	✓	✓ ABE	✗	✓ MOST SUITABLE	✓
<b>B</b> Flammable and Combustible Liquids	✗	✗	✓ MOST SUITABLE	✓ ABE	✓	✓	✓
<b>C</b> Flammable Gases	✗	✗	✗	✓ ABE	✗	✗	✗
<b>E</b> Energised Electrical Equipment	✗	✗	✗	✓ ABE	✓ MOST SUITABLE	✓	✗
<b>F</b> Cooking Oils & Fats	✗	✓ MOST SUITABLE	✓	✗ ABE	✓ LIMITED EFFECT	✗	✓

Redland City Council

## Redland Bay Community Hall

Banana Street, Redland bay



## EVACUATION DIAGRAM

