

# Recycling – it's not a waste

It matters what goes into the yellow-lid bin



**140L**      **240L**      **340L**


There are 3 sizes of yellow-lid bins in use across Redlands Coast

**6** Recycling trucks visit over **60,000** households on Redlands Coast every fortnight



**7.7kg** of recycling is collected from each household every fortnight – that's 12,000 tonnes of recycling a year!

**=12k TONNES**



Recycling is processed on conveyor belts and sorted both manually and using advanced technology.

**100s** OF METRES OF CONVEYOR BELTS





**VISY**  
FOR A BETTER WORLD

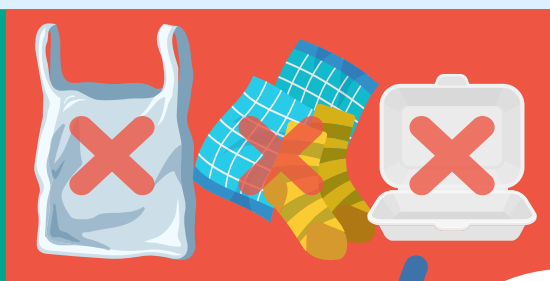


Council recycling trucks deliver to a material recovery facility

 **Recycle more of these items**

 **The less waste such as soft plastics, textiles and polystyrene we receive, the more we're able to recycle**

 **TIP!** Keep lids on bottles and jars



 **DID YOU KNOW?** Batteries are a hazardous waste and can't be placed in any bin. Take them to a battery recycling container instead.



It matters what goes into the yellow-lid bin!