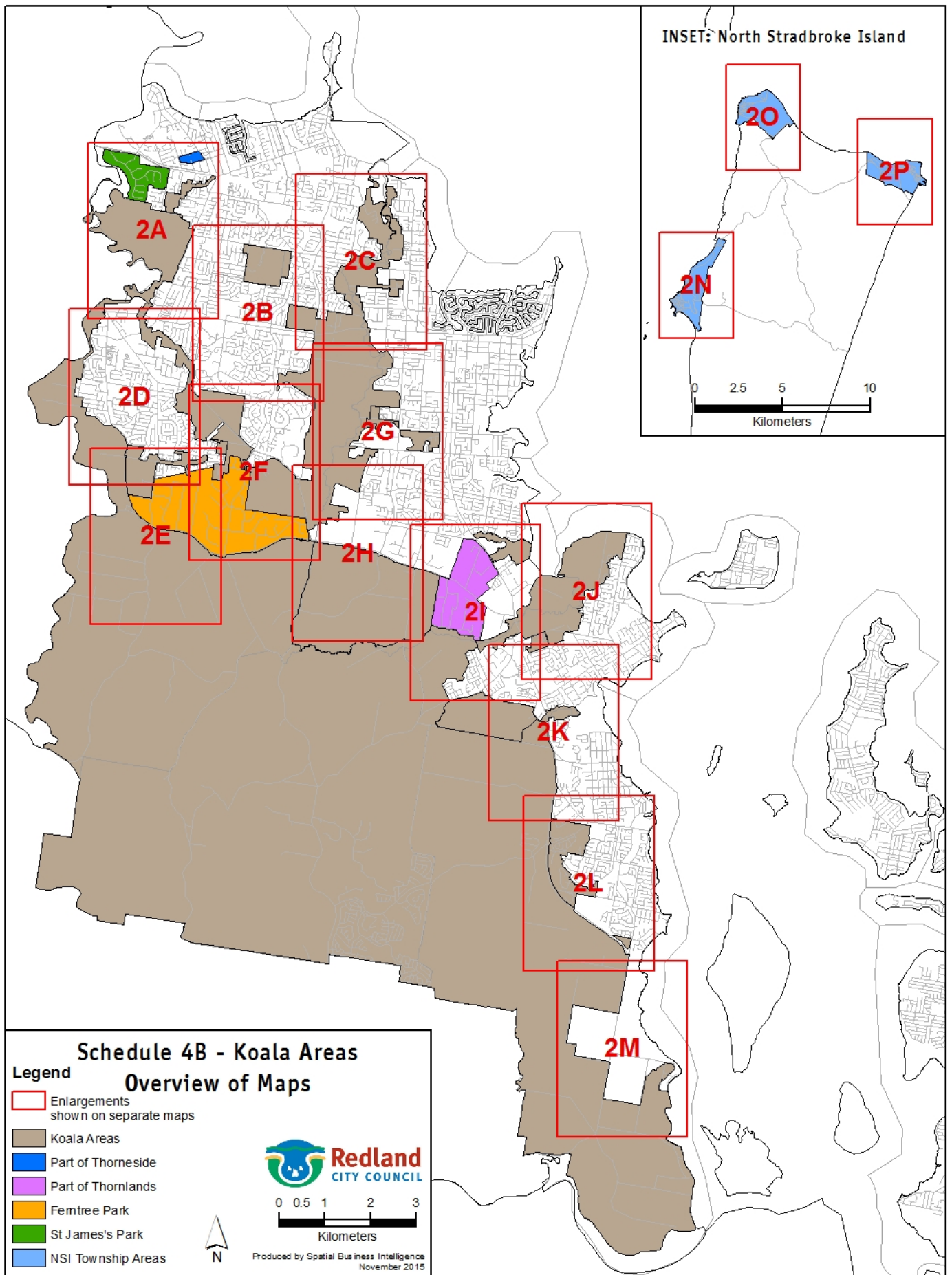
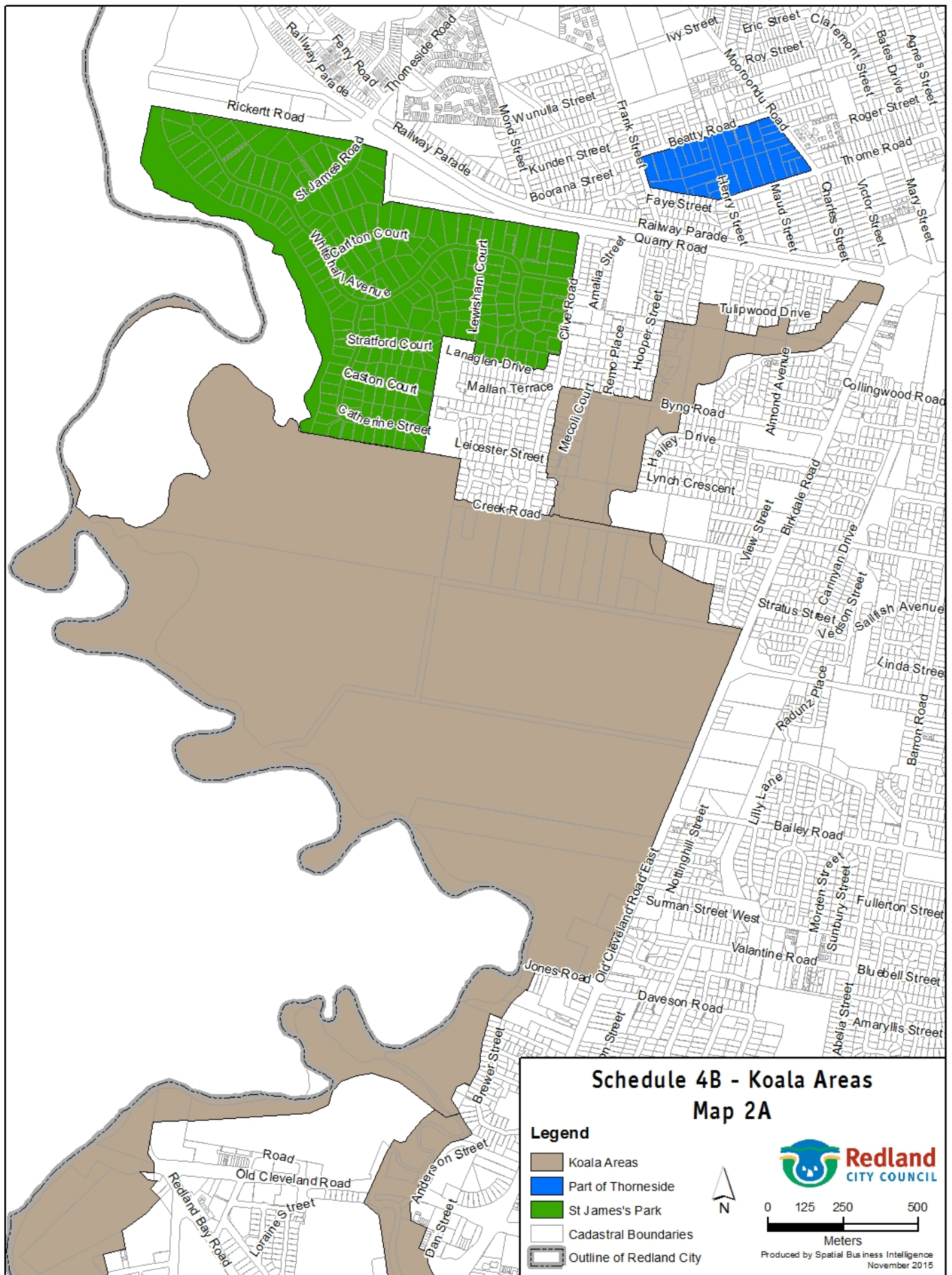


Maps: Existing and newly designated koala areas in Redland City



Newly designated koala areas: part of Thorneside; part of Thornlands; Ferntree Park, Capalaba; St James's Park, Birkdale; and the NSI townships of Dunwich, Amity Point and Point Lookout, were adopted by Council on 24th August 2016 and gazetted on 16th September 2016.

Maps: Existing and newly designated koala areas in Redland City



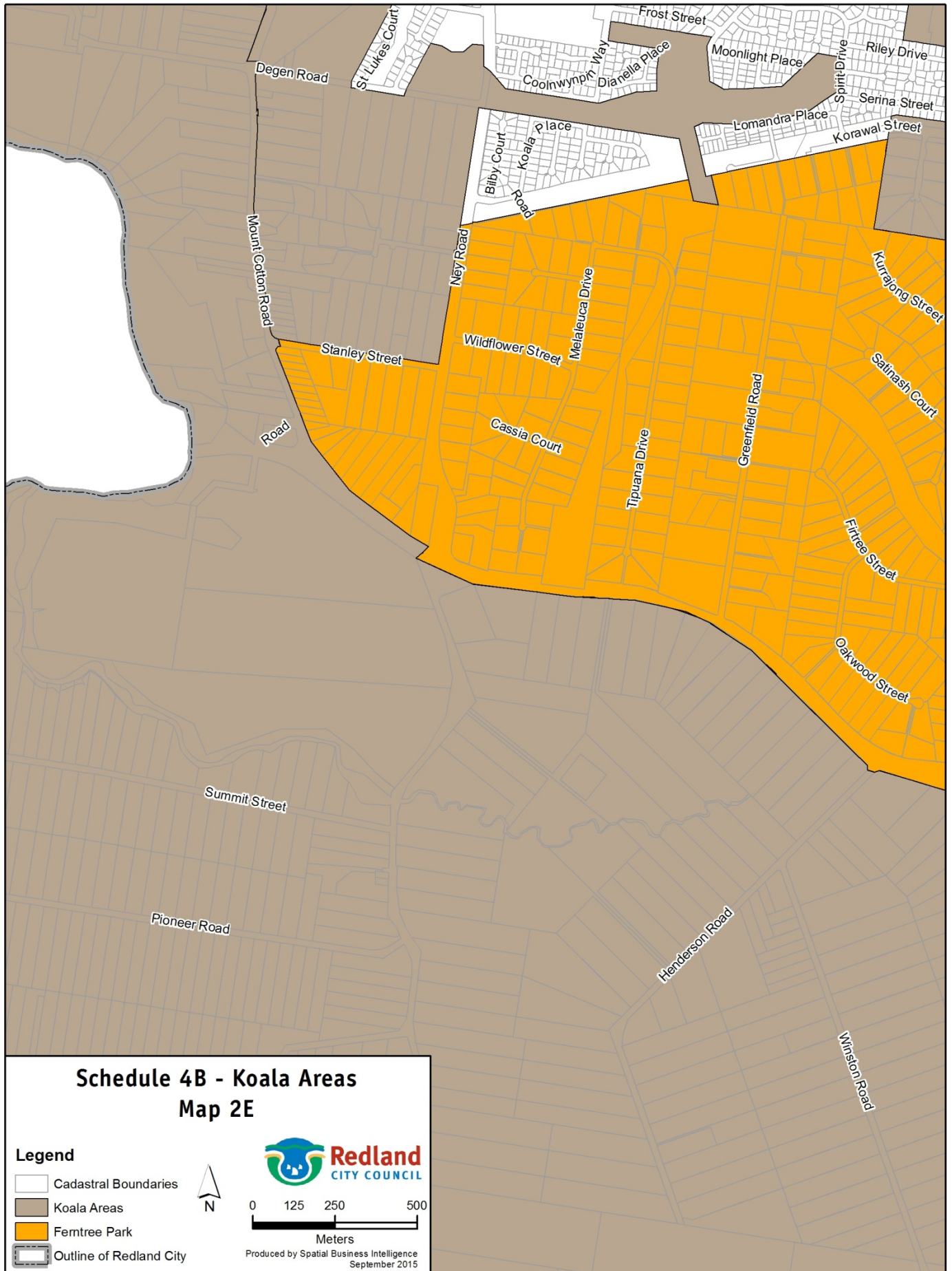
Newly designated koala areas: part of Thorneside; part of Thornlands; Ferntree Park, Capalaba; St James's Park, Birkdale; and the NSI townships of Dunwich, Amity Point and Point Lookout, were adopted by Council on 24th August 2016 and gazetted on 16th September 2016.

Maps: Existing and newly designated koala areas in Redland City



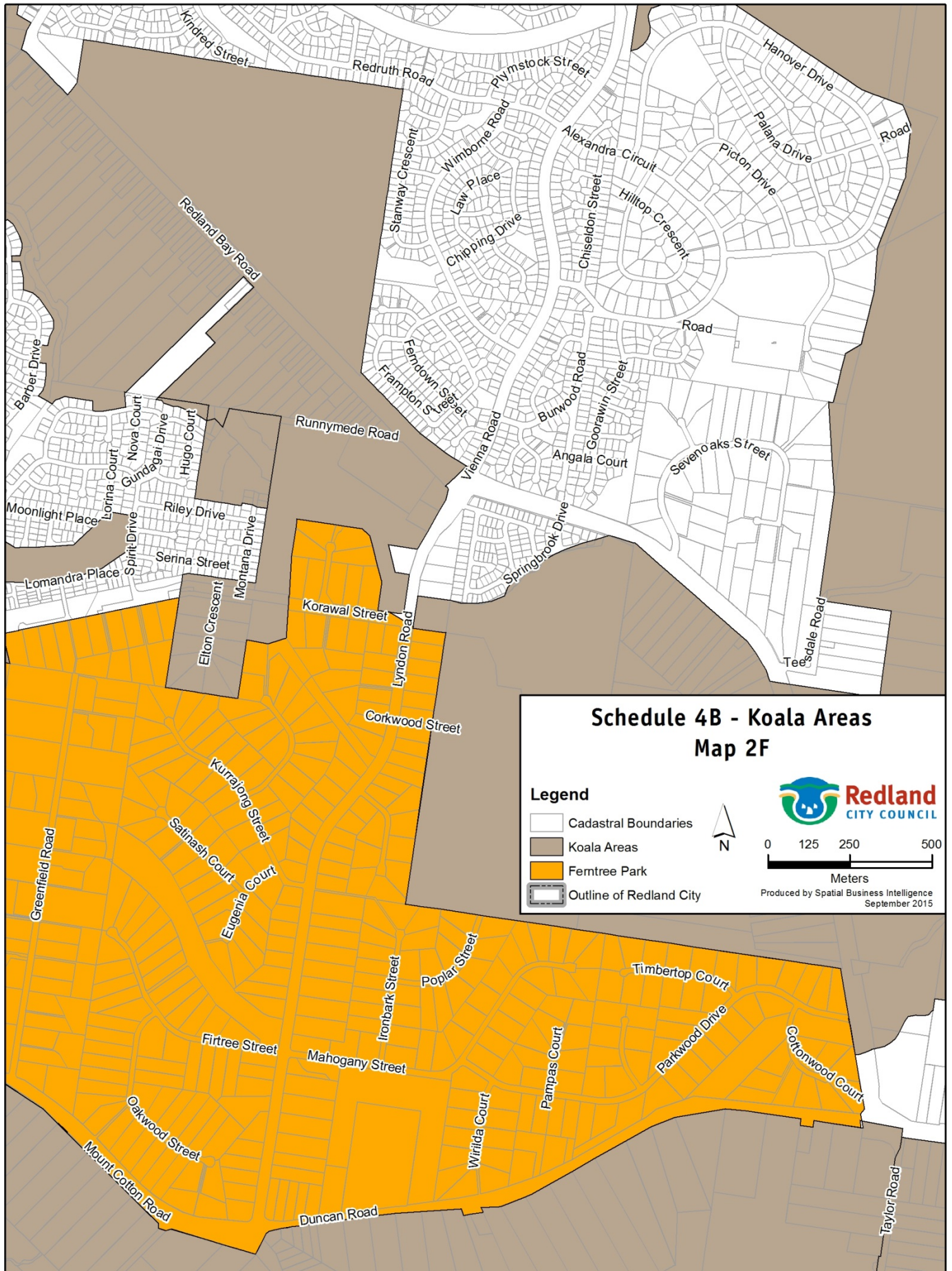
Newly designated koala areas: part of Thorneside; part of Thornlands; Ferntree Park, Capalaba; St James's Park, Birkdale; and the NSI townships of Dunwich, Amity Point and Point Lookout, were adopted by Council on 24th August 2016 and gazetted on 16th September 2016.

Maps: Existing and newly designated koala areas in Redland City



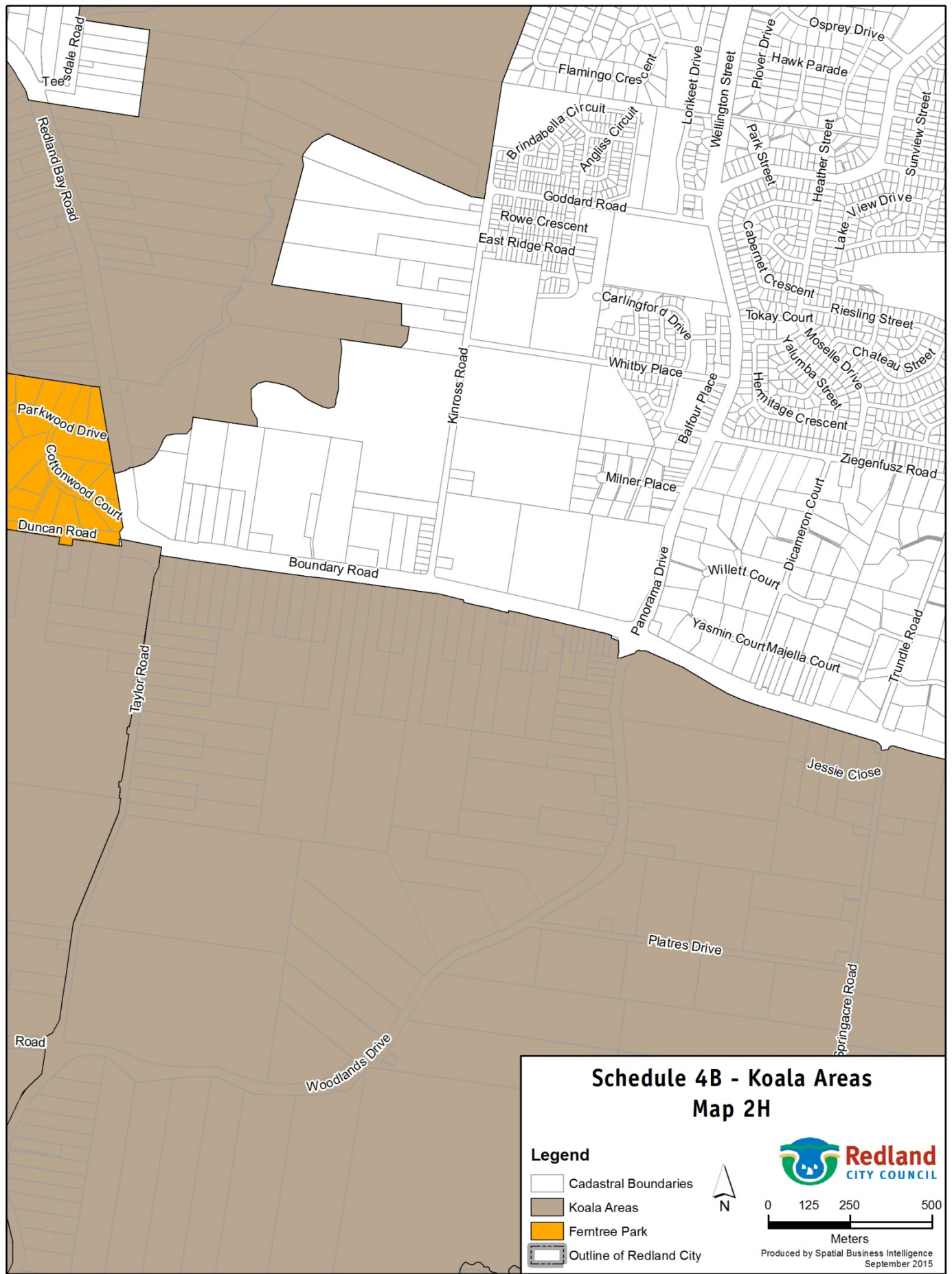
Newly designated koala areas: part of Thorneside; part of Thornlands; Ferntree Park, Capalaba; St James's Park, Birkdale; and the NSI townships of Dunwich, Amity Point and Point Lookout, were adopted by Council on 24th August 2016 and gazetted on 16th September 2016.

Maps: Existing and newly designated koala areas in Redland City



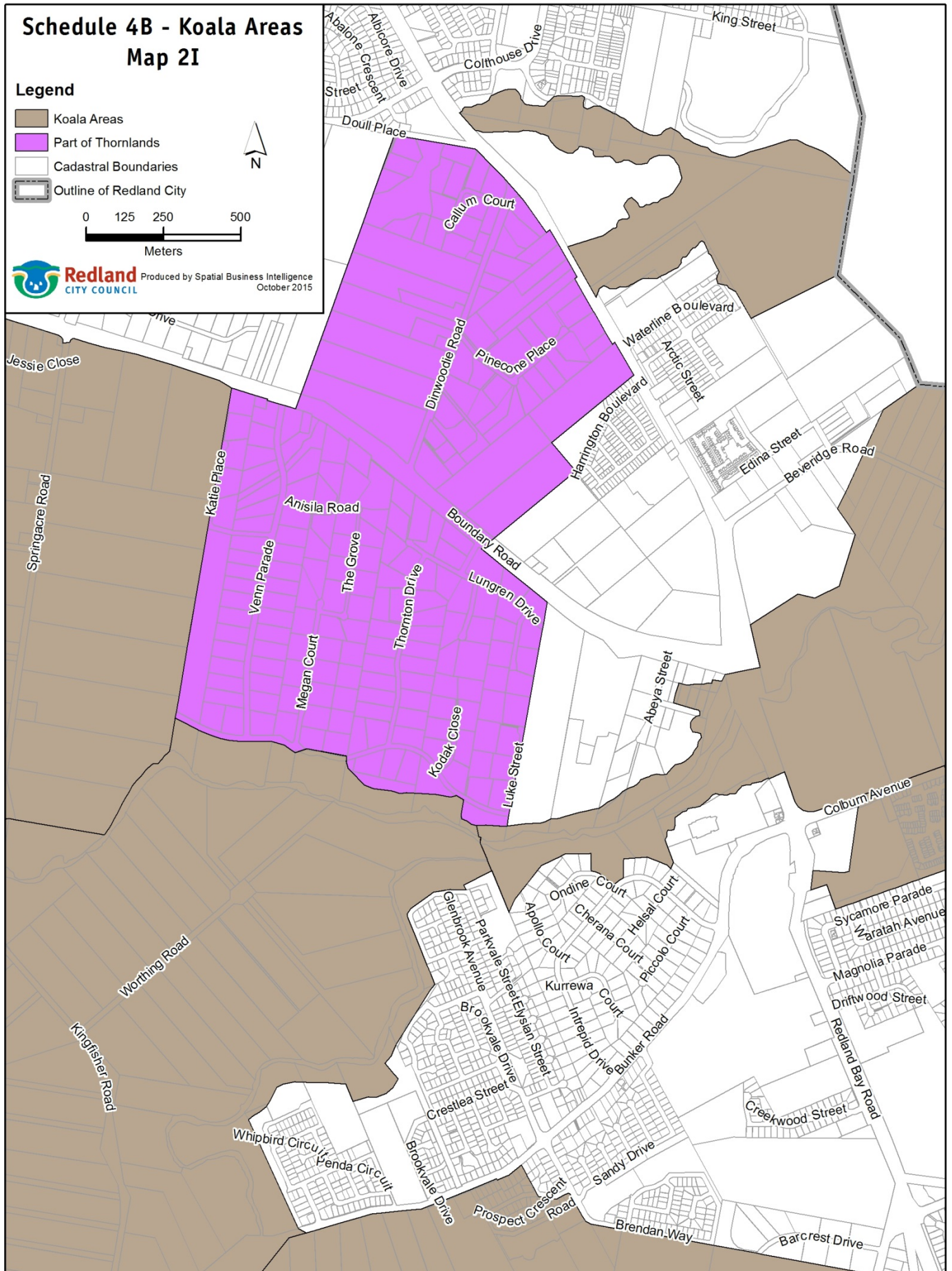
Newly designated koala areas: part of Thorneside; part of Thornlands; Ferntree Park, Capalaba; St James's Park, Birkdale; and the NSI townships of Dunwich, Amity Point and Point Lookout, were adopted by Council on 24th August 2016 and gazetted on 16th September 2016.

Maps: Existing and newly designated koala areas in Redland City



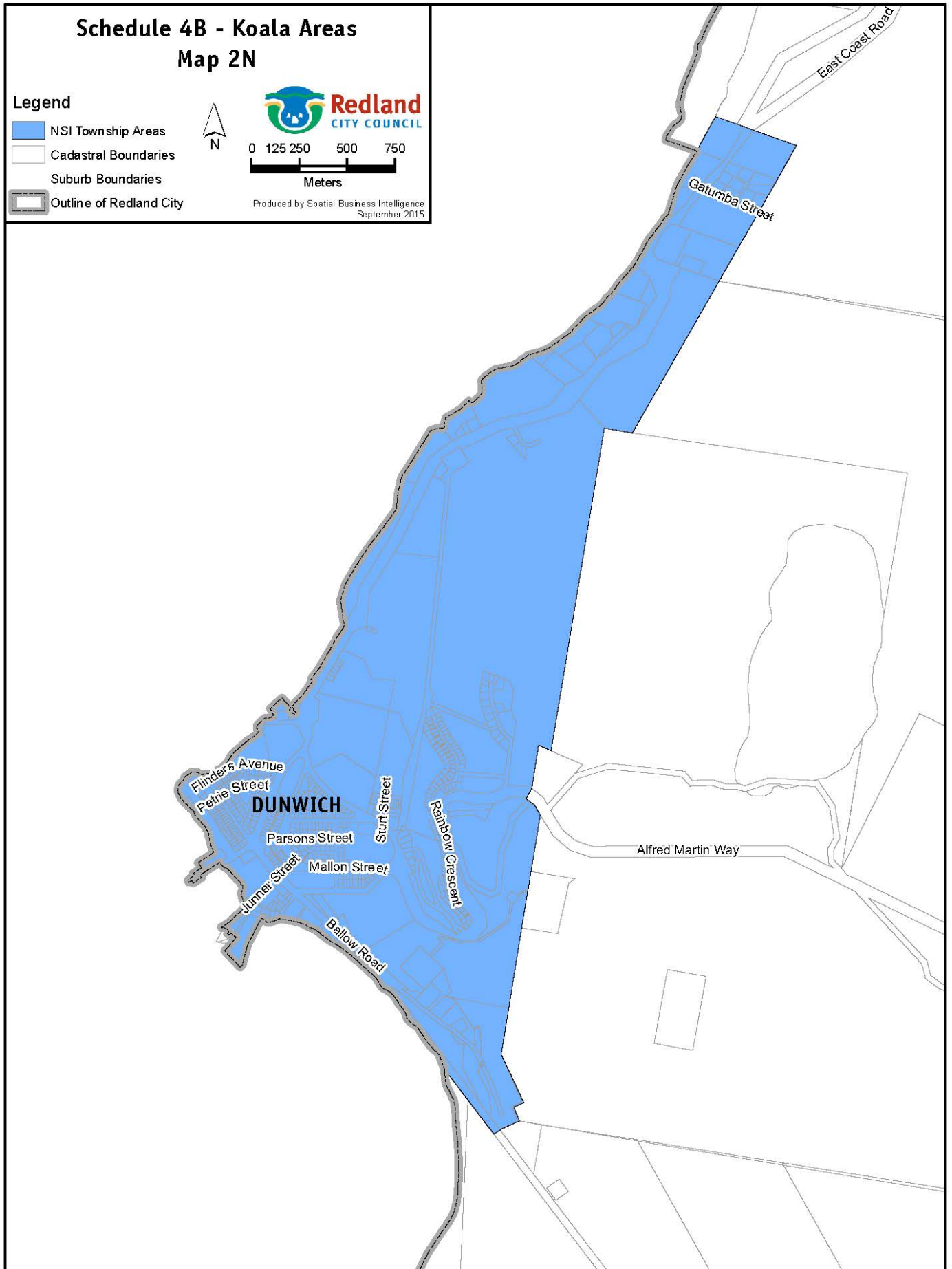
Newly designated koala areas: part of Thorneside; part of Thornlands; Ferntree Park, Capalaba; St James's Park, Birkdale; and the NSI townships of Dunwich, Amity Point and Point Lookout, were adopted by Council on 24th August 2016 and gazetted on 16th September 2016.

Maps: Existing and newly designated koala areas in Redland City



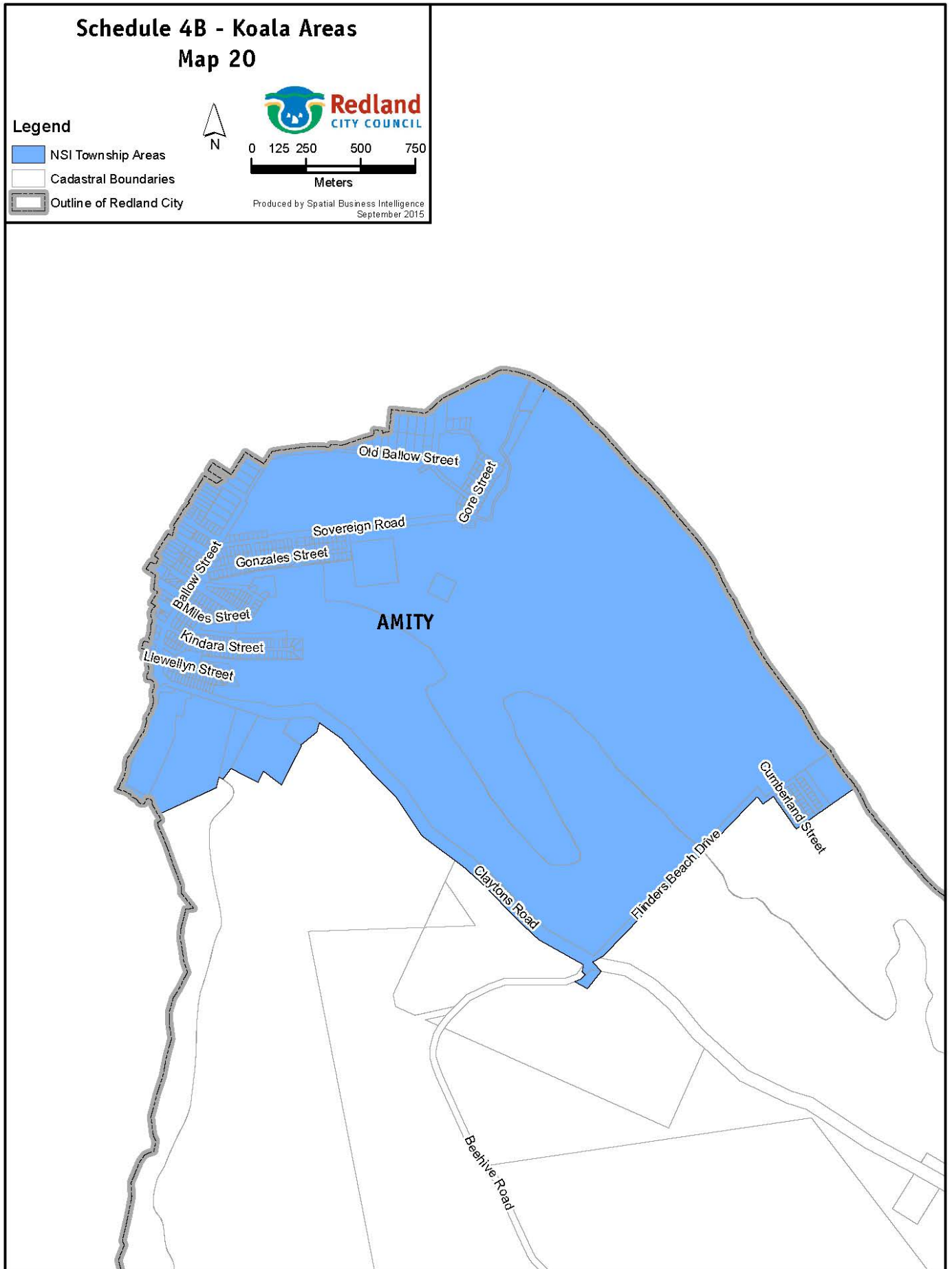
Newly designated koala areas: part of Thorneside; part of Thornlands; Ferntree Park, Capalaba; St James's Park, Birkdale; and the NSI townships of Dunwich, Amity Point and Point Lookout, were adopted by Council on 24th August 2016 and gazetted on 16th September 2016.

Maps: Existing and newly designated koala areas in Redland City



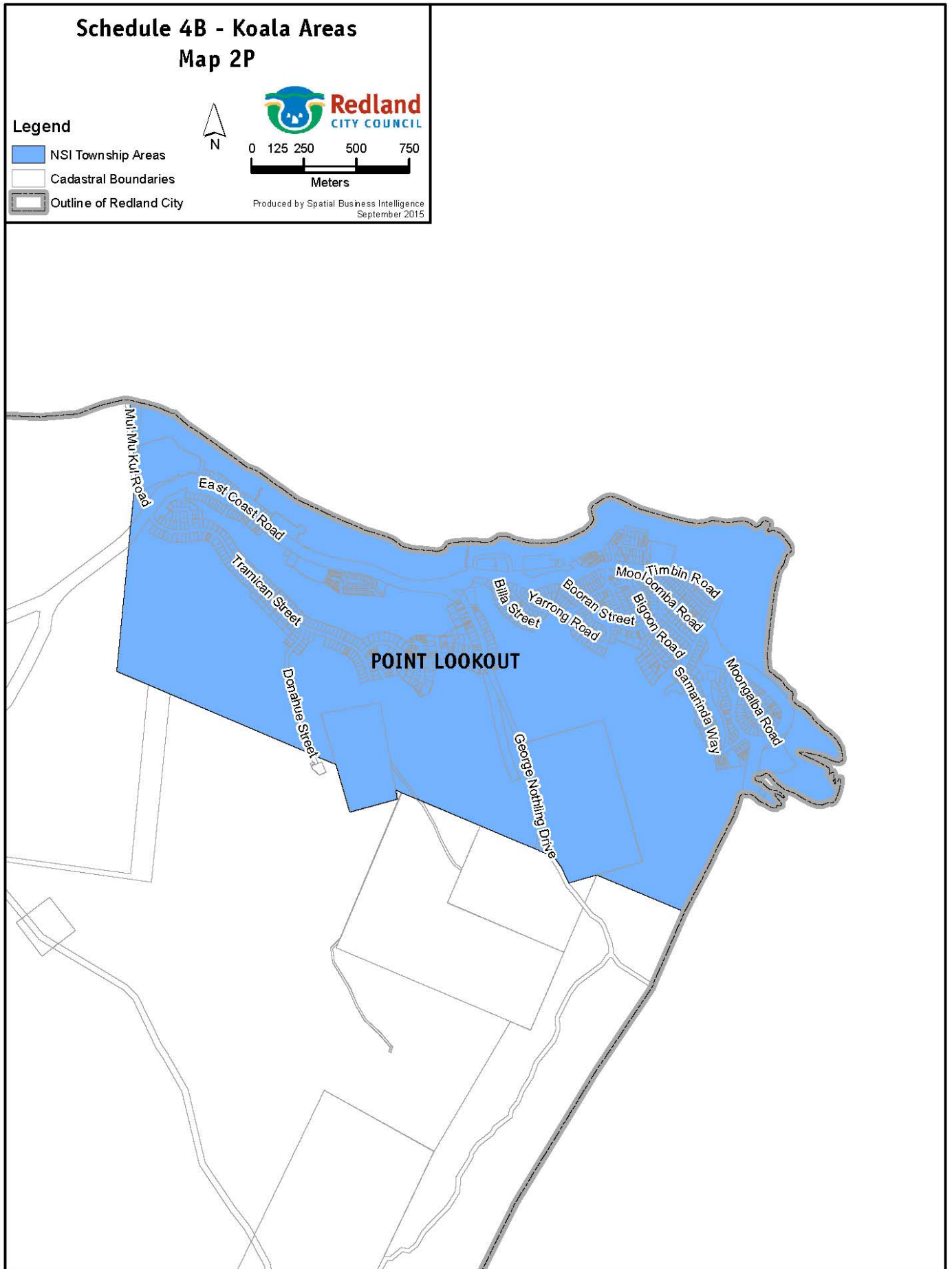
Newly designated koala areas: part of Thorneside; part of Thornlands; Ferntree Park, Capalaba; St James's Park, Birkdale; and the NSI townships of Dunwich, Amity Point and Point Lookout, were adopted by Council on 24th August 2016 and gazetted on 16th September 2016.

Maps: Existing and newly designated koala areas in Redland City



Newly designated koala areas: part of Thorneside; part of Thornlands; Ferntree Park, Capalaba; St James's Park, Birkdale; and the NSI townships of Dunwich, Amity Point and Point Lookout, were adopted by Council on 24th August 2016 and gazetted on 16th September 2016.

Maps: Existing and newly designated koala areas in Redland City



Newly designated koala areas: part of Thorneside; part of Thornlands; Ferntree Park, Capalaba; St James's Park, Birkdale; and the NSI townships of Dunwich, Amity Point and Point Lookout, were adopted by Council on 24th August 2016 and gazetted on 16th September 2016.