

OUR REDLANDS

the best place to live, play and do business

Summer 2015-16 | Issue 08

FREE



**TOONDAH'S
VISION P6-7**

**INSPIRATIONAL
REDLANDERS P8-9**

**FOSTERING
FURRY FRIENDS
P12-13**

**WHAT'S ON &
WHERE P26-27**

Starlight
SHINES ON MT COTTON



Redland
CITY COUNCIL

REDLAND CITY COUNCIL'S
COMMUNITY MAGAZINE

FOLLOW THE
REDLANDS AT



redland.qld.gov.au

4-5 Cover story

Our popular community carols event, Christmas by Starlight, heads to the green at Mt Cotton's Sirromet Winery on Sunday, 20 December.

6-7 Toondah vision

The renewal of Cleveland's Toondah Harbour takes the next step with release of the master plan.

8-9 Inspirational Redlanders

Mt Cotton's Neale and Ronwyn Collier are harnessing their local community spirit to open new worlds to the children of Vanuatu.

10-11 Our surf saviours

Surf lifesavers are back on patrol in the Redlands. Find out how you can be involved.

12-13 Planning In focus

The complexities which guide planning in the Redlands are explained.

14-15 Community

Find out more about becoming a foster carer for pets awaiting adoption and how the City's youth will help design new skate parks.

16-17 Champions

Learn more about what makes the Redland SES Unit so good that it has been named the region's best seven years running.

20-21 Environment

A group of volunteers is doing big things by helping some very small but spectacular residents.

22-23 Tracks and trails

The Redlands boasts a diverse range of tracks and trails for leisure seekers. We take a look at some of the best.

24-25 Holiday food

Here's a culinary helping hand for the festive season.

26-27 What's on

Your guide to what's on where and when in the Redlands.

CREDITS

Produced by: Redland City Council
Stories: Susie Winter Sonia Cahill
Elizabeth Spry Amber Robertson Mark Voisey
Allan McNeill Tracey Walker
Design: Allan Shephard
Photos: Rob Maccoll Mark Voisey
Susie Winter Elizabeth Spry Matt Murray
Advertising: Susie Winter Caryn Puljic
Contact: mark.voisey@redland.qld.gov.au



Our cover: Look who Thornlands' Lily Banks, 10, and brother Matthew, 9, met at Sirromet. **Photo:** Rob Maccoll.



Divisional boundaries changes for March election

Some Redlanders will be voting in different divisions at the next local government election following a boundary update by the Electoral Commission Queensland.

The changes were required to ensure the Redlands' 99,635 enrolled electors were spread equitably across the City's 10 divisions.

Council had reported to the commission that two divisions, Divisions 5 and 6, would not meet the reasonable proportion of electors' requirements for the election. The subsequent boundary changes will affect pockets of residents in all divisions.

These new boundaries will apply to the next local government

election on Saturday, 19 March, 2016. A map comparing current, proposed and final divisional boundaries can be found on the Electoral Commission's website at www.ecq.qld.gov.au. Go to "latest boundary review" and "Redland City". Residents can simply type in their address to find out whether they have changed division.

WHAT'S ON
REDLAND ART GALLERY

SENSE OF COOCHIE: FLYING ARTS
TOURING CURATOR PROJECT

Throughout 2015, curator Nancy Brown has worked with selected members of The Coochie Art Group to design and develop an exhibition through *Sense of Coochie: Flying Arts Touring Curator Project*.

IN FOCUS 2015

Presented simultaneously at both galleries, *In Focus 2015* celebrates the wealth of artists living and working in the Redlands and the important role art groups play in the cultural life of the region.

Images (top to bottom): Robert H Warren, *Russell Island Community Arts, Sand hills, North Stradbroke Island (detail)* 2015, watercolour on paper. Courtesy of the artist. Susan Kemp, *Island sentry II (detail)* 2015, synthetic polymer paint on canvas. Courtesy of the artist.



29 NOV –
17 JAN

Redland Art Gallery, Cleveland
Cnr Middle and Bloomfield Streets
Cleveland Q 4163

Monday to Friday 9am – 4pm
Sunday 9am – 2pm
Admission free
Closed Friday 25 December 2015 –
Sunday 3 January 2016
Tel: (07) 3829 8899 or email:
gallery@redland.qld.gov.au
artgallery.redland.qld.gov.au



14 NOV –
23 JAN

Redland Art Gallery, Capalaba
Capalaba Place, Noeleen Street,
Capalaba Q 4157

Monday, Tuesday, Wednesday
and Friday 8.30am – 5pm
Thursday 8.30am – 7.30pm
Saturday 9am – 4pm
Closed Friday 25 December 2015 –
Sunday 3 January 2016



Redland Art Gallery is an initiative of Redland City Council, dedicated to the late Eddie Santagiuliana





From the Mayor's desk

Mayor Karen Williams | Redland City

Office: 3829 8623 Mobile: 0416 123 588 mayor@redland.qld.gov.au

Message from the Mayor

The past year has been one of milestones for Redland City and for your Council.

We began the year with the immediate challenges of consolidating the achievements of the previous two years, further strengthening our financial position, reducing debt and delivering a fourth-straight responsible and responsive budget under our back-to-basics strategy.

I am pleased to report Council has delivered on all fronts – in fact, we have achieved even more positive results through a relentless search for efficiencies.

Highlights for 2015 include:

- Council now has the lowest per capita household debt in South-East Queensland;
- A second-straight budget surplus and headed towards a third;
- Easing of cost-of-living impacts on ratepayers by again absorbing millions of dollars in external costs rather than passing them on to residents; and
- Delivering the lowest rates rises in the region. Rates increases over the past four budgets have been significantly lower than other South-East Queensland councils.

All this has been managed in the face of rising costs and falling revenue from other sources.

During the year we unveiled economic development and tourism strategies and moved to establish an Economic Development Board to chart our future direction. While we acknowledge it will be a real challenge to transition successfully from sand mining

on North Stradbroke Island by 2019, as proposed by the State Government, we have worked closely with it to plan for that transition and continue to lobby for an ongoing financial commitment.

Our exciting Toondah Harbour development moved a step closer with the Walker Group revealing its impressive plans for this exciting project and seeking Federal Government approval.

Walker's plans for the Weinam Creek Priority Development Area are expected to be revealed soon.

“Council has delivered on all fronts – in fact, we have achieved even more positive results through a relentless search for efficiencies.”

Mayor Karen Williams

Council also approved the \$2.3 billion Shoreline project at southern Redland Bay.

All are 15 to 20-year projects that will generate thousands of new jobs – jobs for Redlanders – and provide a massive injection of confidence into our local economy.

We also hope to attract the State headquarters of Surf Life Saving Queensland and a national centre of excellence to the Redlands, again creating more local jobs.

The Australian Industry Trade College is an important addition, opening in Cleveland for the start of the 2016 school year.

During the year we have been actively working towards finding solutions to road congestion.

Initiatives have included hosting a series of *Redlands on the Move* transport forums that attracted pleasing and positive input from residents.

And, in another first, we established a cross-boundary transport infrastructure working group with Brisbane City Council and involving local, State and Federal politicians and State Department of Transport and Main Roads. The aim is to set transport infrastructure priorities and identify methods of funding solutions. It is interesting to note that most of our congestion pinch points involve State-controlled roads such as Cleveland-Redland Bay Road, Old Cleveland Road and Mt Gravatt-Capalaba Road.

During the year, Council has worked with local MPs to strongly lobby State and Federal governments to prioritise our infrastructure issues. This focus will continue.

Council also continued to lobby for the fast-tracking of broadband connections to the Redlands and, while we have achieved some success, much more needs to be done to overcome the issues which are having such a negative impact on local business.

I thank residents for working with Council to ensure the Redlands continues to be the best place to live, work and to do business. I wish all residents a happy and holy festive season and hope you can spend valuable time with your loved ones.

Your local Councillor



Division 1 – Wellington Point, Ormiston

Councillor Wendy Boglary

Office: 3829 8619

Mobile: 0408 543 583

wendy.boglary@redland.qld.gov.au



Division 2 – Cleveland, North Stradbroke Island

Councillor Craig Ogilvie

Office: 3829 8607

Mobile: 0409 645 672

craig.ogilvie@redland.qld.gov.au



Division 3 – Cleveland South, Thornlands

Councillor Kim-Maree Hardman

Office: 3829 8618

Mobile: 0418 195 017

kim-maree.hardman@redland.qld.gov.au



Division 4 – Victoria Point, Coochiemudlo Island, part of Thornlands and Redland Bay

Councillor Lance Hewlett

Office: 3829 8603

Mobile: 0421 880 371

lance.hewlett@redland.qld.gov.au



Division 5 – Redland Bay, Bay Islands

Councillor Mark Edwards

Office: 3829 8604

Mobile: 0407 695 667

mark.edwards@redland.qld.gov.au



Division 6 – Mt Cotton, Sheldon, Thornlands, Victoria Point, Redland Bay

Councillor Julie Talty

Office: 3829 8606

Mobile: 0418 218 847

julie.talty@redland.qld.gov.au



Division 7 – Alexandra Hills South, Capalaba

Councillor Murray Elliott

Office: 3829 8732

Mobile: 0418 780 824

murray.elliott@redland.qld.gov.au



Division 8 – Birkdale South, Alexandra Hills North

Deputy Mayor

Councillor Alan Beard

Office: 3829 8600

Mobile: 0408 750 963

alan.beard@redland.qld.gov.au



Division 9 – Capalaba

Councillor Paul Gleeson

Office: 3829 8620

Mobile: 0488 714 030

paul.gleeson@redland.qld.gov.au



Division 10 – Birkdale North, Thorneside

Councillor Paul Bishop

Office: 3829 8605

Mobile: 0478 836 286

paul.bishop@redland.qld.gov.au

HANDY CONTACTS

General Council enquiries	3829 8999
State Emergency Service	132 500
Animal Shelter	3829 8663
Redland Home Assist Secure	3383 3030

Christmas

by Starlight



WHERE'S SANTA?: Thornlands' Lily Banks, 10, and brother Matthew, 9, at Sirromet Winery.

Carols to echo through the vines

The Redlands' much-loved Christmas by Starlight family carols evening heads to Mount Cotton's Sirromet Winery this month.

It is a coming of age for the popular Redland City Council event, with more than 10,000 people expected to set up their chairs and blankets on Sirromet's lawns on Sunday, December 20, for a show featuring 50 performers.

While retaining Starlight's community charm and spirit, this year's carols will be a bigger

production with Sirromet now the Redlands' premier venue for international artists.

Hosted by *The Block*'s Shelley Craft and television personality Brett Annable, the free family-friendly event will also boast an animal zoo, face painting, jumping castles, climbing wall and a visit from Santa, plus plenty of food stalls from 4pm, followed by the children's show at 5.15pm.

The main event and its dazzling lighting effects will beam across Sirromet's green from 6pm, with

a spectacular fireworks finale at about 8.30pm.

You will get to sing along with a host of national and local talent, including *The Voice Australia*'s Darren Percival, powerhouse singing trio Tenori and Redlands' own internationally acclaimed Mirusia Louwerse.

This year's line-up also includes local emerging performers and dancers backed by a 30-piece choir.

Visitors are especially welcome at this year's carols, which will cement Redland City as a special

family destination during this year's build-up to Christmas.

Free shuttle buses will be available to get you to the event, leaving from stops throughout the City, with a free water taxi service leaving Toondah Harbour at 9.45pm (see opposite for details).

Ample parking is also available at Sirromet but please be patient and allow extra time for entering and leaving the venue.

Picnics are welcome but no alcohol or glass are to be brought into the grounds.

Managing waste during the holiday season

Waste transfer stations

Redland Bay and Birkdale sites are open every day except Christmas Day (25 December 2015).

Opening hours:

7am – 5.15pm

For more information: www.redland.qld.gov.au/waste

Wheelie bins

There is **no change** to household wheelie bin collection on public holidays.

**Bins must be out by
5am on Christmas Day**

RecycleWorld Redland Bay

Our trash and treasure shop at Redland Bay Waste Transfer Station is usually open Thursdays and Saturdays, 9am-2pm.

RecycleWorld holiday closures:

- Boxing Day
Saturday 26 December
- Thursday 31 December
- Saturday 2 January





Darren Percival



Mirusia



Fireworks



Alexa Curtis



Santa

Sunday 20 December 2015 Sirromet Winery, Mount Cotton

From 4pm

Family fun activities including:

Jumping castles, animal zoo, rock climbing, face-painting, a visit from Santa plus plenty of food, drinks and information stalls

5.15pm

Children's Christmas Show

6pm

Carols concert starring:

The Voice Australia's Darren Percival, Redlands' own internationally acclaimed Mirusia Louwerse, trio Tenori and *The Voice Kids Australia* winner Alexa Curtis, plus a great line-up of local emerging performers.

About 8.30pm

Spectacular fireworks display.

Visit www.redland.qld.gov.au/cbs

Free
entry, buses,
entertainment
& activities



Free bus timetable

Bus 1 - Redland Bay, Victoria Point and Thornlands

4.20pm Redland Bay Marina
4.25pm Redland Bay Shopping Village
4.35pm Victoria Point Interchange (Stop D)
4.45pm Boundary Road at Springacre Road, Thornlands
5.00pm CHRISTMAS BY STARLIGHT - Sirromet Winery, Mount Cotton
9pm Return run leaving Sirromet Winery

Bus 2 - Thornlands, Cleveland and Alexandra Hills

4.15pm Thornlands Dance Hall, Cleveland-Redland Bay Road
4.25pm Toondah Harbour, Cleveland (Ferry arrives) Gold cat
4.30pm Toondah Harbour, Cleveland (Bus departs)
4.40pm Cleveland Train Station, Shore Street
4.55pm Vienna Road, near Wimborne Road
5.10pm CHRISTMAS BY STARLIGHT - Sirromet Winery, Mount Cotton
9pm Return run leaving Sirromet Winery
Gold Cat will run a free water taxi leaving Toondah Harbour at approximately 9.45pm once the bus arrives

Bus 3 - Ormiston, Wellington Point, Birkdale, Capalaba

4.00pm Ormiston train station, Wellington Street, Ormiston
4.15pm Wellington Point Shops, Main Road Wellington Point (near BP)
4.25pm Birkdale Fair Shopping Centre, Birkdale Road
4.30pm Old Cleveland Road East, Birkdale, near Buckingham Street
4.35pm Capalaba Park 'n' ride, Moreton Bay Road, Platform 1
4.45pm Redland Bay Road, Capalaba
5.00pm CHRISTMAS BY STARLIGHT - Sirromet Winery, Mount Cotton
9pm Return run leaving Sirromet Winery

This year's Christmas by Starlight promises to be quite spectacular at the Redlands' premier venue for international performers.

Deputy Mayor Alan Beard Division 8
(Birkdale South, Alexandra Hills North)

PROUDLY
PRESENTED BY



EVENT
PARTNER



SUPPORTED BY



Christmas appeal to spread cheer to Redlanders in need

Redlanders in need will get a leg-up this festive season thanks to the 2015 Mayor's Christmas appeal.

To make a donation, all you have to do is pick up a few extra non-perishable food items or toiletries during your next shop and drop them unwrapped into a Redland City Council Library or Customer Service Centre.

Local businesses have also been urged to get involved by rallying the troops and collecting items.

The items will be donated to the Redlands Community Centre, Salvation Army and Champions Church Foodbank, all of which do great work in supporting the community.

While Christmas is a time for celebration, there are many in our community who are doing it tough, with more than 1000 Redlanders in the "disadvantaged" socio-economic group.

The appeal aims to show just how strong the Redlands' community

spirit is, with outstanding support for recent Council-supported fundraisers such as Diner en Rouge, which supports victims of domestic violence, and the Vinnie's CEO Sleepout which raises funds to help the homeless.

To ensure your items are received in time for Christmas, please drop them off to Council Customer Service Centre's at Capalaba and Cleveland or libraries at Cleveland, Capalaba or Victoria Point before 4.30pm on Thursday, 17 December.

ECONOMY



Walker proposes a Toondah master stroke

The long-awaited transformation of the Redlands' gateway to the bay and North Stradbroke Island is another step closer with release of the master plan

It has been 50 years since the first regular vehicle and passenger ferry service started plying the route between Toondah Harbour and North Stradbroke Island, initially to service the mining industry and later the burgeoning tourism industry.

While the ferry fleet has grown and visitor numbers have soared, the harbour facilities themselves have remained virtually unchanged, despite countless false starts to upgrade the area.

With the gateway to Moreton Bay looking its age, the next step in realising its potential has been Walker Group Holdings' release in late November of the proposed master plan for the site's redevelopment.

The proposed master plan, delivered with support from Place Design Group, features a new ferry terminal and tourism precinct, with a hotel nestled beside a marina plaza and a range of residential

housing options amid parklands, boulevards and boardwalks.

Walker Queensland Development General Manager Peter Saba said the design team had responded to public feedback on earlier plans for the Priority Development Area project, being delivered in partnership with Redland City Council and Economic Development Queensland. For GJ Walter Park, for example, the proposed master plan has enhanced the park and has protected its historic cricket field, dog park and stands of trees that are home to a koala population.

"Toondah Harbour is a spectacular destination that will now receive the investment needed to ensure

public usage of the foreshore and the bay are maximised for visitors and tourists alike," he said.

"The revitalisation of Toondah Harbour is an incredible opportunity for this region, and we recognise our responsibility

Toondah Harbour promises to be a spectacular destination and big winner for the Redlands.

Cr Mark Edwards Division 5
(Redland Bay, Southern Moreton Bay Islands)
Finance spokesman

to work with the community to deliver a public space which they will be proud of for many years to come."

Release of the proposed master plan initiated the start of the rigorous environmental

and planning assessment process, which included the first of numerous opportunities for the public to have a further say on the proposal. Federal Environment Minister Greg Hunt gave the public 10 days to

outline any matters of national environmental significance they thought should be taken into consideration in assessing the project under the *Environmental Protection and Biodiversity Conservation Act 1999*.

It is expected an environmental impact statement (EIS) process will kick off in 2016 and there will be up to three further opportunities for public feedback.

The community will be asked to comment on the draft terms of reference for the EIS and the lengthy EIS document itself. If any supplementary documentation to the EIS is requested, that may also be subject to public notification.

Keep up to date on Toondah Harbour's revitalisation by signing up to Council's monthly Pulse e-newsletter or visiting www.toondah-harbour.com.au



BRIGHT FUTURE: Artist impressions of Cleveland's new Toondah Harbour.

Forums expose City's need for better connections

A series of community forums has highlighted both short and long-term priorities needed to ease the Redlands' transport issues.

The *Redlands on the Move* forums, an initiative of Redland City Council, the Queensland Department of Transport and Main Roads and *Redland City Bulletin*, also voiced the need to "future-proof" vital transport trunk infrastructure so the Redlands is able to respond adequately to growing demand and new technology.

More than 200 people provided feedback through the three forums, led by 12 Australian experts in engineering, economics, transport modelling and future science, or an online survey.

Among the solutions canvassed were the need for:

- Regional employment hubs connected to high-speed broadband services that allow both government and corporate employees to work remotely from central Brisbane offices;
- High-frequency public transport corridors and busways linking Cleveland, Capalaba and Victoria Point to Brisbane, Logan and the Gold Coast;
- Duplication of the train line to Cleveland to support high-frequency services; and
- Dedicated greenways and pathways to provide off-road routes for cyclists, pedestrians and mobility scooters.

Frustration with poor public transport services was a common theme, with residents citing poor service connectivity and frequency and a lack of direct express or fast trunk services between the Redlands and Brisbane.

The results of the *Redlands on the Move* community conversation will inform Redland City Council's advocacy for new infrastructure, such as the Eastern Busway extension and duplication of the Cleveland rail line, as well as the Redlands Local Government Infrastructure Plan, to be developed next year.

By the numbers:

18

months since Toondah Harbour Priority Development Area declared

67

hectares of Priority Development Area

96.5

millions of dollars expected to be injected into the local economy

400

marina berths

1000

construction jobs a year

949

public car parks provided within 400m of the ferry terminal

3600

new dwellings

2031

the year about 6300 people will call Toondah home

Local character shapes 'unique' harbour plan

A key influencer of the proposed Toondah Harbour master plan has been Place Design Group.

The planning and design consultancy is responsible for some of Queensland's most iconic coastal public places, including Townsville's Strand, the Surfers Paradise foreshore, Airlie Beach, Mooloolaba Esplanade and Brisbane's South Bank.

All have been recognised as great public spaces where residents and visitors enjoy recreation.

Design principal Shaun Egan, pictured, has worked on many of these public realm projects for

Place Design Group and says each design response has to be site specific.

"It's important to ensure the plan and design is unique and specific to the area," he says.

"The Toondah Harbour plan draws on the site's own characteristics – those that are inherent to Cleveland and Moreton Bay.

"Creating great places for residents and visitors to the



neighbourhood has been our key driver in the master plan.

"Being able to provide additional public parkland to the foreshore and retaining GJ Walker Park and its Norfolk pines and koala habitat trees are excellent outcomes for the community."

The proposed master plan, released on 25 November, includes hectares of new public foreshore parkland created through reclamation.

"Place Design Group is proud to join Walker to realise this exciting vision," Shaun says.

LOCAL HEROES

Helping Vanuatu's future is taken as read

The spirit of community thriving in Mt Cotton is fuelling the imaginations of remote South Pacific children

On a little wooden bench in a classroom built from the forest, a child turns the pages of a book with anticipation.

Every word is cherished and every book is treasured. So too their Redlands' "families" who brought the precious gift of education to this remote village on Espiritu Santo, Vanuatu's largest island.

For the children of Stonehill, the story literally began just over nine years ago when Mt Cotton's Neale and Ronwyn Collier began taking small groups of students to Vanuatu from Cleveland District State High School, where Neale is chaplain.

"We became aware of the absolute lack of books for children. They really had nothing," Neale recalled. "We just promised we would get them a couple of boxes of books."

It was the start of a mission to provide a library for every school

on the island - one which is bringing remarkable results thanks to the Colliers and the generosity and support of Mt Cotton folk, several Redlands schools and "just about every Rotary club" in the City, among others.

"We have already done three libraries and over the next year we will do another five," Neale says.

It has opened wonderful new

worlds to the children in these impoverished villages beyond where road transport ends and boat transport begins. "When we put in the library at Stonehill, the literacy of the children was very basic," says

Ronwyn, who is deputy head of campus at Calvary Christian College and provides professional help for village teachers when their new libraries arrive.

"Their written work or retelling was 'I woke up this morning, mum

Neale and Ronwyn epitomise the sense of community shared in Mt Cotton.

*Cr Julie Talty Division 6
(Mt Cotton, Sheldon, Thornlands,
Victoria Point, Redland Bay)
Economic Development
spokeswoman*



COMMUNITY: Neale and Ronwyn Collier have been passing on the generosity of Mt Cotton residents, local schools and Rotary to the children of Vanuatu.

made me breakfast, I went to school, I went home'. But when Neale went back after Cyclone Pam (in March this year) to see what needed to be done, he brought back a video of these little children at the same place writing stories more than a page long, exciting adventures that they were imagining after reading books.

"Before that their whole world was just their village. Now they are seeing things in books and using them in their writing. It is so beautiful and so exciting."

The Colliers work with the villagers, who sell produce at

markets to help build their new community libraries - a big commitment for people who are very poor, subsisting with almost no outside help. Even if they had the money, they have no way of getting books.

"So we do what we can do and they do what they can do," says Neale, who migrated with Ronwyn from South Africa in 2001, when they both "fell in love" with Mt Cotton, its natural bush and sense of community.

Since then, they have established the Mt Cotton Community Fellowship where both are pastors,

Is your pool fence compliant? Act now to avoid a fine!

The deadline has come and gone for all Queensland homeowners to make sure their pool fences are compliant with State Government swimming pool safety standards introduced in 2010.

It is Council's role to regulate these new standards in the Redlands. If you missed the 30 November 2015 deadline, we urge you to act now to ensure fencing for your new or existing pool complies.

All pools must also be registered on the State Pool Register.

If you're planning to sell or lease a property with a pool, you'll need a current Pool Safety certificate (valid for two years).



More information: www.hpw.qld.gov.au go to "construction", then "building and plumbing" and "pool safety".
Qld pool safety hotline 1800 340 634





for 40 years said he had never see a library like it – there were eight banks of shelves,” Ronwyn recalls. The help the Redlands provides, however, is not without its challenges. “Our biggest issue is shipping and storage,” Neale and Ronwyn agree, nodding to their home packed with books, boxes, posters and other educational resources ready for the next shipment. “We could certainly use some extra storage space and help with getting the books over to the villages.”

But the rewards are immense. “When we took the first students from Cleveland High over to Vanuatu, the initial reaction was ‘where have we come to’ ... a community living in poverty, living from the forest,” Neale says. “But they then got an incredible sense of making a difference. It can be quite overwhelming. They also got a real sense of community. “Everyone gets a bit teary-eyed when we leave because they are so friendly ... in a few hours you can become life-long friends.”

CAN YOU HELP?

You can help bring the power of literacy to the children of Vanuatu by:

- Donating educational and reference books such as encyclopaedias, dictionaries, atlases, children’s books, readers and short adult novels
- Providing storage space
- Helping with packing
- Assisting with shipping, or
- Joining a team to Vanuatu

Contact the Colliers on 0405 412 432 or via mtcotton.com.au.

two youth groups - Livewires for younger children and C4 for teenagers – and produce the local community newspaper, the *Mt Cotton Mail*.

Neale and Ronwyn, who also collect toys to set up kindergartens at the island schools, have been busy sorting books and packing boxes at their home for the next shipment to Vanuatu, with a team heading to Espiritu Santo after Christmas to help set up the next library.

They said Redlanders had been most generous and the island villagers and teachers were so grateful.

“When we built the first library at Stonehill, a teacher who was 65 and had taught all over the island



Straddie trio in a league of their own

First glance at Straddie locals Casey and Amy Karklis and Kelsey Parkin gives no indications of their success in a traditionally male-dominated sport.

Kelsey, 17, and identical twins Amy and Casey, 18, pictured, are doing their island, and City, proud as rising rugby league stars.

In October 2014, the trio played for the Indigenous Queensland Women’s Team against a New Zealand Maori team.

All three then also made the train-on squad for the national Indigenous Women’s All Stars team, with Casey going on to play in the curtain raiser before the NRL’s 2015 All Stars match in February.

In a great year for Casey, she also become the youngest-ever player to represent Australia as a Jillaroo in May.

There are now plans to form an all-female team on North Stradbroke Island next year. As there isn’t currently a Redlands women’s rugby league team, all three play at a club level in the women’s South East Queensland Division One competition for Souths Logan.

Despite the buzz surrounding the girls’ skills and speed, they’re humble about the success they’ve achieved.

“It’s awesome to be able to represent your culture and community,” Amy says.

The twins say the love of the game runs in the family, crediting older brothers Ashley and Jason for introducing them to the sport.

“Our brothers got us started on catching a footy before we could even walk,” laughs Casey.

Proud of their Quandamooka heritage and community, Casey, Amy and Kelsey still give their time to the club that gave them their first run with the ball, the Straddie Sharks Allsports Club.

Club president Tony Brown says the girls are setting a great example for other aspiring Aboriginal female athletes and all Straddie youngsters.

“We are proud that Amy, Casey and Kelsey started their rugby league careers here, and it’s shown other local girls that there’s nothing stopping them from playing rugby league,” he says.

“We are already seeing the next generation of junior girls chasing their heels, with four from our club making representative sides in the state-wide Queensland School Sports 10-12 years Girls Rugby League Invitational Carnival this year.

“We’d love to see more girls at our sign-up day in February for the 2016 season.”

And how do these inspiring young women feel about being local role models? “We just want to work hard, go out and do our best,” says Kelsey, who continues her role as a junior coach and referee.



COMMUNITY: Neale and Ronwyn Collier at their Mt Cotton home.

COMMUNITY

Summer guardians of the surf

When a report came through that a fisherman had fallen into the ocean at North Gorge back in 2013, Sandra Middleton and Eve West didn't hesitate.

After launching Point Lookout Surf Lifesaving Club's inflatable rescue boat (IRB), they were on the scene in minutes, hauling the man's 100kg bulk aboard after finding him floating face down and unconscious near the rocks.

Speeding back to Main Beach, Eve started CPR before the inflatable ran up on the sand and a local doctor, who had become aware of the drama, arrived to oversee resuscitation attempts. That day, as Sandra,

pictured, administered oxygen, around 10 club members took turns administering CPR while another worked to restart the man's heart with a defibrillator.

Sadly, despite hope that they had saved him, he died in hospital a few days later. But the efforts of so many club members that day

is testament to the dedication and training of the island's surf club members.

Sandra and Eve's outstanding efforts led to them being awarded the Medal for Lifesaving Excellence by Surf Life Saving Queensland last year.

For Sandra, a Cleveland mum and the club's president for the past

five years, that day represents the highs and, tragically, the lows of a remarkable journey which started 18 years ago when she signed up with Point Lookout SLSC to help her children become surf savvy for their visits to the beach.

"I initially sat on the beach and watched as I wasn't a confident swimmer in the surf," Sandra recalls. "It took a few seasons before I was confident enough to train for my Bronze Medallion."

She achieved that in April 2000 and has since been involved as a nippers' leader, club secretary and now president, playing a role in many life-saving situations.

Living on the mainland, she was lured by Straddie's beautiful surf beaches, finding it more appealing than "travelling down the coast".

Our volunteer surf lifesavers do an amazing job keeping our beaches safe for local families and visitors.

Cr Craig Ogilvie

Division 2 (Cleveland, North Stradbroke Island)



"The barge trip or the water taxi ride always seems to take you away from the 'real world' so easily," the Ormiston College teacher explains. "It was when I was training for my Bronze Medallion that I began to fully appreciate what the life savers were volunteering to do on patrol and I wanted to help out where I could."

Enjoy beautiful North Stradbroke Island these summer holidays!

Get in touch with the Redlands Visitor Information Centre to find out more and to book your accommodation ☎ 1300 667 386.

Tips for a great stay

- Embrace Quandamooka Country and respect its land, culture, people and values
- Don't litter and protect the natural vegetation
- Observe road rules, camping ground rules and fire restrictions

If staying at a holiday home

- Keep to maximum occupancy numbers
- Park in the spaces provided to you
- Dispose of your waste and recycling correctly
- Respect your neighbours – minimise loud noise

If holidaying with pets

- Make sure you keep an eye on your dogs for the safety of others and wildlife (especially wallabies and koalas), and always walk them on a lead
- Feel free to use the dog off-leash areas at Skatebowl Park at Dunwich and Home Beach at Point Lookout

Thanks and enjoy your stay! 📷 #straddieanyday



🌐 www.redland.qld.gov.au





Surf safety tips (FLAGS acronym)

F Find the red and yellow flags and swim between them

L Look at the safety signs and observe the warnings

A Ask a surf lifesaver or lifeguard for advice on localised conditions

G Go swimming with a friend

S Stick your hand up if you get into difficulty and need help



As the holiday season approaches, Straddie's beaches become busy with club members patrolling both Main and Cylinder beaches to give families safe options, depending on the age of the children.

"We also monitor the other beaches from Main to Flinders and that keeps us busy," she says.

The service that Sandra and her club provides literally is a matter of life and death.

In 2014-15, Point Lookout SLSC made 73 rescues, took 3625 preventative actions and administered 141 first-aid treatments.

It makes for a busy time, which means the Point Lookout club and its colleagues at Coochiemudlo Island always welcome new patrolling members and nippers.

SLSQ's award-winning Little Lifesavers program, supported by Star Outdoor, will return to Raby Bay in the school holidays, with a week-long program from 18-22 January.

For more information about surf safety, joining your local surf lifesaving club, or enrolling your kids in Little Lifesavers, visit lifesaving.com.au

Redlands at heart of lifesaving excellence

The Redlands could become the new home of lifesaving excellence in Queensland.

Council has agreed to explore options for the relocation of Surf Life Saving Queensland's state headquarters to the Redlands. The plan includes the potential for a \$50 million-plus surf lifesaving centre of excellence to be set up locally, including a new community pool and emergency services precinct.

SLSQ has estimated 200 ongoing full-time local jobs could be created if their headquarters moved to the Redlands. The proposed centre would also provide a new training facility for local swimming and nipper clubs.

Council will now explore potential locations and funding options, as well seek support from the State and Federal governments.

SLSQ CEO John Brennan said the proposed centre of excellence would be a world-class training and education facility.

Sandra says lifesaving on Straddie is unique because many of the members are from the mainland.

"For the patrolling members who stay over in the bunk rooms, a real sense of family develops and you get to know other members far better than by just driving to the club and doing a patrol with them," she explains. "It is particularly great to see the younger members

having fun." Sandra started doing voluntary patrols in earnest in 2005, joined the roster two years later and has now clocked up more than 870 patrol hours.

"When you are called on to perform a rescue, it is saving the patient that is most important, you don't think of your own safety – that is where you rely on your training and skills," she says.

Stay chilled at the tip this summer!

It's hot and busy at Council's waste transfer stations during summer. But it's a great opportunity for resource recovery with the on-site recycling points. Here's some points for a quick and easy trip to the tip.

Before going:

Get sorted – separate waste from recoverables. Different recycling collection points on site include:

- Greenwaste
- E-Waste (TVs and computers only)
- Metal, fridges & white goods
- Vehicle batteries
- Empty gas bottles
- Clothing
- Engine & cooking oil
- Cardboard
- Timber
- Bricks and concrete
- Polystyrene
- Pre-loved goods (RecycleWorld drop-offs)

Be safe on site:

- Follow instructions – our staff try their best to ensure the site runs efficiently and safe for you and others
- Double wrap all fibro and cement sheeting
- No smoking – flammable landfill gas on site
- Drop loads in the right spot – contaminating stockpiles creates a hazard and is costly to rectify
- Park in designated areas – our parking spots are chosen with your safety in mind
- Keep children and animals in vehicles – waste transfer stations are not child or pet-friendly places

Declare your load at the gatehouse – it is important for everyone's safety and it's the law. Please cooperate with staff when you're asked about your load.



Remember:

- Have your licence ready to show when you pull up to the gatehouse
- Hazardous waste is accepted at Redland Bay only
- Don't overload – vehicles more than 4.5t (gross mass) are charged commercial waste disposal fees

For more information on waste and recycling in the Redlands, visit www.redland.qld.gov.au/waste or call 3829 8999



Redland Performing Arts Centre presents

Musical Melodies

2016 Concert Series



Don't Shoot Me, I'm Only the Piano Player

Starring David Scheel
SAT 27 FEBRUARY, 2PM

The Kings of Swing

Starring Greg Aspelung
plus an 11 piece band
SAT 16 APRIL, 2PM

Tenori

Starring David Kidd, Craig
Atkinson and Andrew Pryor
WED 22 JUNE, 11AM

Forever Everly

Starring David Lee-Jay
and Martin Norris,
plus a three piece band
WED 24 AUGUST, 11AM

Southern Cross Soloists Rhapsody

WED 31 AUGUST, 11AM

Jally Entertainment A Morning with Groucho

Starring Frank Ferrante
WED 26 OCTOBER, 11AM

TICKETS – SOUTHERN CROSS SOLOISTS RHAPSODY

EARLY BIRD PRICES: (book before 1 July)
Snrs/Pens \$40, Groups of 10+ Snrs/Pens \$35, Adults \$45

TICKETS – ALL OTHER CONCERTS:

Snrs/Pens \$21, Groups of 10+ Snrs/Pens \$19, Adults \$27

BOOKINGS: Phone 3829 8131 or visit www.rpac.com.au

Booking Fees:
\$3 per ticket online,
\$4 per transaction
by phone.

Box Office Hours:
Mon – Fri 12noon – 4pm;
Sat 10am – 1pm.

PIANO PROVIDED BY:

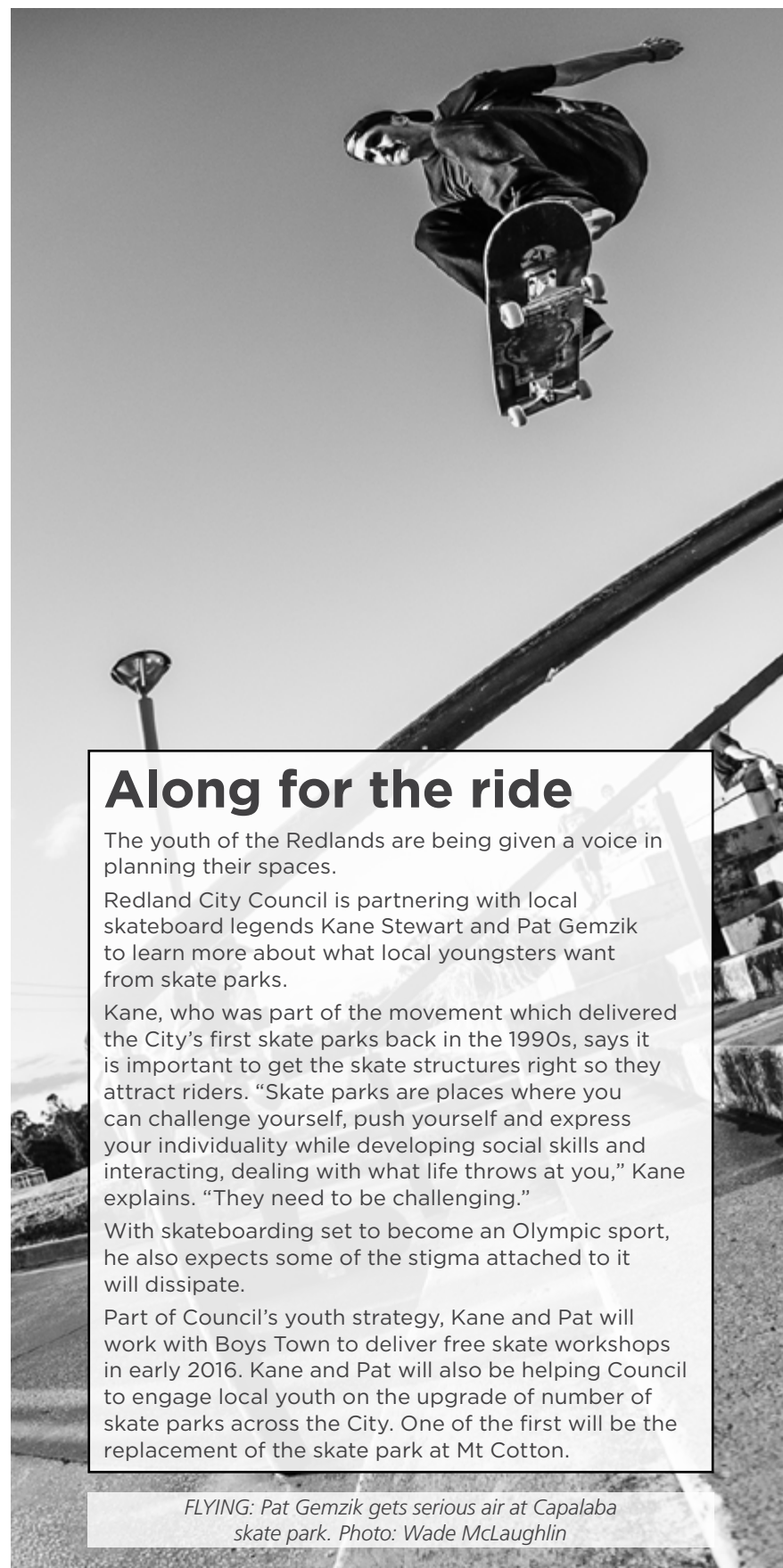
redland
performing arts centre

Redland
CITY COUNCIL

Supported by Major Media Partners: Redland City Bulletin and redlife.

Redland
SINFONIA

COMMUNITY



Along for the ride

The youth of the Redlands are being given a voice in planning their spaces.

Redland City Council is partnering with local skateboard legends Kane Stewart and Pat Gemzik to learn more about what local youngsters want from skate parks.

Kane, who was part of the movement which delivered the City's first skate parks back in the 1990s, says it is important to get the skate structures right so they attract riders. "Skate parks are places where you can challenge yourself, push yourself and express your individuality while developing social skills and interacting, dealing with what life throws at you," Kane explains. "They need to be challenging."

With skateboarding set to become an Olympic sport, he also expects some of the stigma attached to it will dissipate.

Part of Council's youth strategy, Kane and Pat will work with Boys Town to deliver free skate workshops in early 2016. Kane and Pat will also be helping Council to engage local youth on the upgrade of number of skate parks across the City. One of the first will be the replacement of the skate park at Mt Cotton.

FLYING: Pat Gemzik gets serious air at Capalaba skate park. Photo: Wade McLaughlin

Alana's pet job is her passion

It's now been six months since Council's animal shelter started its pet adoption program, following notification that the RSPCA no longer had the capacity to accept our unclaimed animals.

In that time it has found new homes for 36 cats and 37 dogs, with 23 animals taken by local animal rescue agencies.

We've also found out something we have long suspected ... what awesome people we have working at the animal shelter! Many, including Alana Lambert, are already actively involved in animal fostering ahead of the formal program planned for next year.

Alana has been on the payroll for about four months, after two and a half years of volunteering her services when she wasn't at her full-time administration job.

"It's my dream job. Now I can combine my passion with my work," says Alana, who has been fostering animals through rescue services for years and was the volunteer coordinator for one such group.

Currently Alana has Bonny and her three kittens (pictured) at home with her and her own cat, dog and rainbow lorikeet.

"When Bonny came into the shelter, she was so skinny we didn't even realise she was pregnant. Imagine our surprise when we turned up to work to



Fostering a pet awaiting a new family can be very rewarding.

Cr Lance Hewlett Division 4 (Coochiemudlo Island, Victoria Point, part of Thornlands and Redland Bay)

Animal Management spokesman

find three unexpected arrivals," recalls Alana, who didn't hesitate to provide a safe haven for Bonny and her little family until they are all ready to be rehomed.

"I'd say this is Bonny's first litter. She's already proven to be a great mum – and feeling secure in a safe space is a big factor in that," Alana says.

"We'll put her kittens up for adoption once they're weaned at about eight weeks.

"Then, once Bonny's back to full health, she'll be desexed, microchipped and have a full health assessment, which

includes vaccination, flea and worm prevention, before we start looking for her forever home."

Alana is just one of many animal management officers who work at the shelter by day, spend their lunch breaks walking the dogs, and care for animals in their own homes at night.

"We're all animal lovers and passionate about what we do, but it can be a tough gig," Alana says, adding that working at Council has reinforced why the City needs regulations to ensure pet owners do the right thing, such as walking their dog on a lead.

"After attending the scene of dog attacks, you see the damage dogs can do to people and other animals. As an animal lover, I find it devastating," she says.

"At least if you have your dog on a lead you can offer it some protection in those situations.

"And as much as I love cats, I also appreciate the natural beauty of the Redlands, so I keep my own moggie inside."

Keep an eye out for details of how you can become an animal foster carer at www.facebook.com/RedlandsAnimalShelter in the new year.

 Redland Animal Shelter

Save a life, adopt a pet!



 It's easy as A B C:

- | | |
|---|---|
| A | All available animals are online. Simply visit our animal adoption web page redlnd.cc/PetAdoptions to see if we have a pet to suit you and your family. |
| B | Bring your family along to meet and greet your potential pet at our animal shelter. |
| C | Collect your new pet and start your lives together. |

All animals are desexed, vaccinated, microchipped, heartworm tested (dogs), FIV tested (cats) and have had a full health assessment along with flea and worm prevention (unless there is a medical reason not to).

Visit the animal shelter: 264 South St, Thornlands Mon to Fri: 8.30am–4.30pm Sat & Sun: 9am–12pm

 3829 8663

 /RedlandAnimalShelter



PLANNING IN FOCUS

Mythbusters: dispelling planning fiction

While the State Government has forecast the Redlands' population will grow by about 50,000 by 2041, Redland City Council cannot prevent or limit that growth.

Rather, it must manage it through a planning scheme which is constrained by State Government legislation and must reflect

State interests. The current State Government planning system is "performance based", requiring plans to articulate desirable outcomes without stipulating how these are to be achieved.

Redland City Council has lobbied the State to provide a more prescriptive and easier

to understand planning system to give the community greater confidence in the outcomes.

Meanwhile, when dealing with development applications, Council is obliged to make decisions in line with State legislation or potentially face costly challenges in the Planning and Environment Court.

While the growth forecasts and recent development projects have fuelled concerns the City is facing extensive development, projected growth is actually significantly less than our neighbours.

Here we also address other "urban myths".

State laws and development

Development applications are assessed under the State Government's *Sustainable Planning Act 2009*, which identifies the process and the planning instruments for development assessment which Council must follow. The Planning and Environment Court may overturn any decisions made by Council deemed to not be consistent with the *Sustainable Planning Act*.

Myth

Council can choose to not accept applications that it believes do not fit with the intent of the area.

Fact

Under the *Sustainable Planning Act*, Council must assess all applications and does not have the ability to prohibit development.

Myth

Council has total control over whether an application should be approved.

Fact

There is a set of State rules and regulations Council must follow when making planning decisions. Council must assess and decide applications in accordance with those rules. If any application meets the merits and performance requirements of the planning scheme then although Council can refuse it, it is likely that the decision will be challenged and subsequently approved in the Planning and Environment Court, often at considerable expense.

Many applications must be referred to the State Government for assessment and its decision

is binding. The State Planning Minister also has the power to "call in" the application or direct Council to make certain decisions.

Myth

Developments which do not comply with Council's planning scheme must be refused.

Fact

Under the *Sustainable Planning Act*, Council must assess a development application against the planning scheme and consider whether it complies. If it complies, it should be approved. If it is in conflict, it may still be approved based on certain criteria set out in the *Sustainable Planning Act*. Council is obliged to consider whether there are sufficient grounds to justify an approval for a development that is conflict with a planning scheme.

Myth

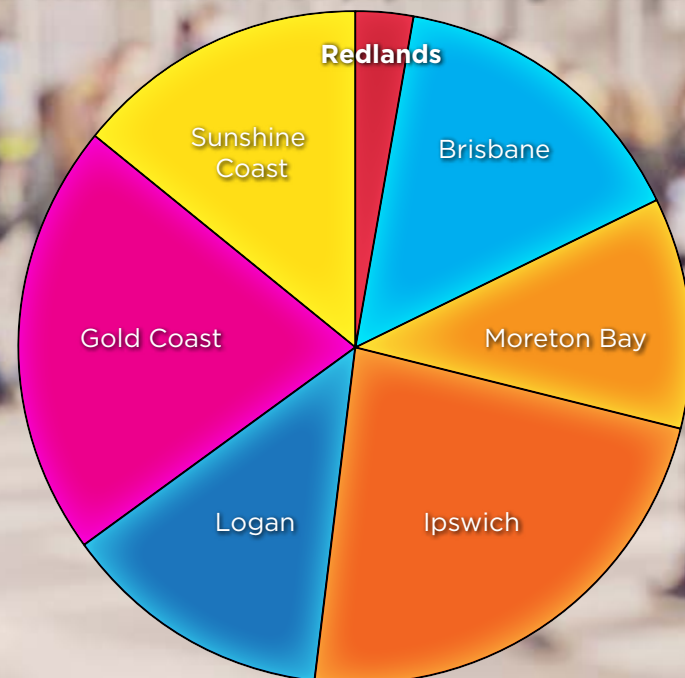
A development can be refused if Council doesn't like the design or layout.

Fact

What one person might find ugly another person might find attractive. That's why there are planning and design guidelines for Council to follow when making these decisions. There are codes which identify desired outcomes for certain development. These comprise:

- **Zone codes** - which identify the land use intent for an area;
- **Overlay codes** - which identify the constraints associated with certain areas of the City;

Forecast share of SEQ population growth to 2031



Source: Queensland Government population projections, 2011 edition Urbis.

- **Use and other development codes** - which identify outcomes associated with certain development types; and
- **General codes** - which outline the mechanics, such as parking and landscaping requirements.

When deciding on development applications, Council must consider the outcomes sought in all of the relevant codes in the planning scheme, as well as any State policies.

Myth

Developers can basically do what they like.

Fact

Every development is subject to stringent assessment against relevant planning instruments by Council and the often State Government. To ensure development complies with planning policies and functions appropriately, Council may add conditions to the approval in line with State legislation. These conditions require the developer to ensure the development goes smoothly and fits with the surrounding area. Conditions deemed too onerous can be challenged in court.



LOOKING AHEAD: Redland City Council is obliged by the State Government to plan now for the arrival of about 50,000 more residents by 2041.

How Council plans for the future

The long-term - or strategic- planning for the City sets the direction for where development will occur to meet future demand while at the same time protecting the things we love about the City, such as our green space and community facilities. In its planning, Council must take into account State Government legislation and direction through plans such as the South-East Queensland Regional Plan.

Myth

Council just approves developments ad-hoc and without any long-term plan.

Fact

Council's planning scheme is the strategic blueprint which outlines what development is allowed where and which parts of the City are protected. It helps guide Council when making decisions on development applications.

Myth

Council has total control over the long-term planning of the City.

Fact

In preparing its planning scheme, Council is required to reflect State interests. The South-East Queensland Regional Plan sets a long-term strategy to manage population growth, development and change. It distributes forecast population growth across each council area and each council is then expected to manage how that growth occurs.

Myth

Councils can cap population growth.

Fact:

The South-East Queensland Regional Plan identifies specific dwelling and population targets for each council to accommodate through their planning schemes. Councils cannot simply close the door and say "go somewhere else". They are obliged to show how they will manage the State Government's forecast growth.

Myth

Redland City is undergoing a large amount of development.

Fact

Compared to its neighbours, Redland City is only seeing modest growth. According to the South-East Queensland Regional Plan, the Redlands will accommodate about 2 percent of the region's anticipated growth of 2.2 million, with an expected population increase of 50,000 by 2041. By comparison, Logan City's population is forecast to grow by 300,000 by 2041.

Myth

There is already enough available land in the Redlands to accommodate urban growth.

Fact

To help with the review of our planning scheme and identify if there was sufficient land to meet State Government population

targets, Council commissioned the Urbis Land Supply Review in 2014. Indicating a shortfall in land for detached dwellings, it found that Council could accommodate the State Government's population forecast through significantly increasing the supply of units and townhouses.

But not everyone wants to live in a unit or townhouse; many people want to live in a house with its own yard. To meet that demand, Council - through its draft City Plan - identified opportunities to accommodate further detached dwellings (i.e. new developments), predominantly in the form of in-fill development.

Myth

Council gives developers discounts on their infrastructure costs.

Fact

When Council issues a development approval, it may order that funding is provided by the developer to build some of the essential infrastructure, such as larger local roads, parks and water and sewerage systems.

The State Government has capped what Council can charge for this, meaning there is sometimes a gap between what the infrastructure costs and what the developer pays - this is what some people refer to as the discount. Council is prevented by law from charging more. Council has been seeking to have this cap lifted so ratepayers aren't left out of pocket.

Residents' views on planning scheme now being assessed

The huge task of assessing the more than 4000 submissions on the Draft Redland City Plan has begun.

Council officers will go through each of the submissions, identify key issues and make recommendations to Council.

It follows an extended 11-week consultation period - almost twice that required - during which Council hosted 52 community activities, including 13 open house forums, 12 pop-up displays, 10 key stakeholder meetings and 17 "meet the planner" sessions.

More than 2000 residents took advantage of the forums, displays and information sessions, with Council's planners also spending a combined 130 hours at face-to-face meetings with residents since consultation began on 14 September.

By the time it had closed on 27 November, there had also been 11,500 visits to Council's City Plan website and 355 people helped by customer service consultants, either in person or over the phone.

During consultation, localised information was sent to every household and interactive maps, videos and 25 fact sheets created to help people navigate the draft plan and submission process.

Council officers are required to assess every properly made submission in forming their recommendations.

A submissions report will then be prepared for the State Government for its input, with recommended changes needing to comply with State requirements.

With the local government elections on 19 March, the final plan will be presented to the new Council for adoption.

There's a wealth of information about the draft City plan at yoursay.redland.qld.gov.au/city-plan-2015



ENVIRONMENT

Whale watching connects with dreaming stories

The Quandamooka Yoolooburrabee Aboriginal Corporation (QYAC) hopes to start whale-watching tours around North Stradbroke Island in 2016.

It follows the State Government's offer of the third whale-watching authority for the area as part of its economic transition strategy for the island after sand mining is phased out.

QYAC Chief Executive Officer Cameron Costello said a joint venture partner had been lined up and it was hoped tours would start in 2016.

"We want this to be a globally renowned area for cultural and eco-tourism based around whales. Whale watching tourism will give the Quandamooka People the added benefit of presenting their traditional owner and dreaming stories," Mr Costello said. "We're planning a whale interpretive centre at Point Lookout that will display a whole whale skeleton. Each whale season we'll be holding 'welcome to the whales' ceremony and will pass the whale song up the coast from one traditional owner group to the next as the humpbacks migrate north."



Wild wonders of the Redlands captured in all their glory

From glowing fungi and a rather stern curlew to the cute and cuddly, this year's Redlands Photo and Film Competition captured a stunning array of wonderful native fauna and flora. Here's the six winners in the popular IndigiScapes competition.



Wildlife in Redlands' Parks and Reserves "Birds" Winner Megan Forbes

The Redlands is such an inspiring place, providing so many wonderful opportunities for wildlife photographers.

Cr Paul Bishop Division 10
(Birkdale North, Thorneside)

Take care of your home these holidays

Holidays are a time of celebration and relaxation. Don't let thieves ruin your time away.

Follow these simple tips to reduce the opportunities for crime:

- Inform a trusted friend or neighbour of your trip and leave them your contact details.
- Try to make your home and property look lived in – cancel deliveries, leave lights on timers and ask a neighbour to collect your mail and bring in rubbish bins.
- Clear your garden of tools, ladders and bricks that could be used to break in.
- Do not leave a message on your answering machine telling people you're on holidays.
- Ensure all of your doors and windows are locked. Don't leave a key hidden outside.
- Do not leave your car keys in the house if your car is parked in the garage or driveway. Take them with you or give them to a trusted friend or neighbour.

For more information www.redland.qld.gov.au/CommunitySafety





Wildlife in Redlands' Parks and Reserves
"Other" Winner Henry Baskerville



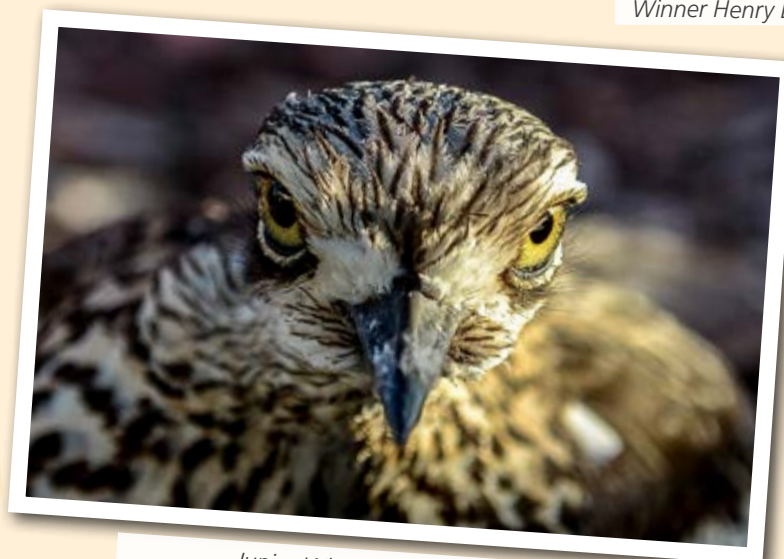
Wildlife in Redlands' Parks and Reserves
"Mammals" Winner Karolyn Campbell



Wildlife in your Suburbs
Winner Henry Baskerville



Native Plants Winner Henry Baskerville



Junior Winner Elodie Murray

Report Graffiti Online with Vandal Trak

Every holiday season we see a spike in incidences of graffiti and vandalism. It's not unique to the Redlands, but we can all help discourage and reduce this behaviour by reporting it promptly, preferably within 24 hours.

Rapid removal limits the admiration a vandal receives from their peers (often the primary motive) and reduces the likelihood of further vandalism.

Online form

Visit www.redland.qld.gov.au where you can register for Vandal Trak, Council's graffiti reporting system. Select **Report graffiti** from the **Fast find** right hand menu bar. Or go directly to www.vandaltrack.com.au and register as a user on their website.

Once registered, you can then log details and location of the graffiti, upload a photo and complete your request.

Smartphone App

Download your free Mobile App at the Vandal Trak website www.vandaltrack.com.au.

When using the App, simply take a photo of the graffiti and follow the prompts. You'll be asked to give a basic description of the tag. Vandal Trak will automatically send your graffiti request to Council.



www.redland.qld.gov.au

www.vandaltrack.com.au

GET READY

Award-winning crew fosters culture of family

For each of the past seven years, the Redland State Emergency Service (SES) Unit has been recognised as “best in the region”. To win such an award once is impressive; to be recognised for seven successive years is unprecedented. So what makes the Redland City team so successful? Victoria Point’s Leisa Battley, who joined the SES in 2012, believes the unit’s family feel and commitment to training are its keys to success. “Our crew is very welcoming and supportive. The members are passionate about their community and support each other no matter what. It’s the SES way,” she says. “We’re a close-knit team, close as family, and I’ve made many good friends.”

First joining the Redland Bay group, Leisa is now a group leader for North Stradbroke Island, where she grew up.

“I’ve learned so much through the SES, from practical skills

like sandbagging and fixing roofs to accredited training. It’s totally different from anything I’ve ever done and I’ve gained so much knowledge and experience,” she says.

Inspired by her involvement, Leisa’s three sons are also keen to volunteer.

“My 18-year-old son has already joined and the younger two are keen to contribute when they are old enough,” she says.

Deputy local controller Jason Atherinos, who joined the unit more than nine years ago after helplessly watching family in Innisfail struggle in the aftermath of Cyclone Larry, feels that training, community engagement and Council support strengthen the organisation.

“I think Council’s support certainly contributes to our crew’s continued success, as well as our active training program across the City,” he says.

“Everyone is there to help the community and openly shares their skills and knowledge. There’s a strong sense of family in unit, no doubt influenced by the smaller size of our City,” he said.

“We are passionate about our community, working hard to build relationships with other community groups and visiting schools, shopping centres and libraries to talk to the public about how they can prepare for emergencies and disasters.

“In the past five years, I’ve been involved in flood recovery efforts in Charleville, Brisbane and Roma – it’s incredibly rewarding to be part of an organisation that makes a difference, especially in smaller communities where the SES is integral in times of need.”

The Redland SES Unit is currently seeking new members across the City, especially on the islands. Find out more at

www.redlandses.com.au



FAMILY: Members says the award-winning Redland SES Unit is as close as family.

A wild way to volunteer

Redlands Wildlife Rescue program needs more volunteers for both services:

Redlands Wildlife Care Network (RWCN) – A telephone advice service for the community, which operates 8am to 5pm daily.

Redlands After-hours Wildlife Ambulance (RAWA) – Rescue and transport service for sick and injured wildlife, which operates 5pm to 8am daily. Volunteers must have a current driver’s licence and reside in the Redlands.

New volunteers are provided with comprehensive training and need to attend an induction session. Contact us now and we’ll put you on the list for our next induction, in early 2016.



We need you!



 IndigiScapes on 3824 8611  indigiscapes@redland.qld.gov.au

 **Redland**
CITY COUNCIL



“All Redlanders should have an emergency plan, even if you think you’ll never need it.”

*Cr Kim-Maree Hardman
Division 3*

*(Cleveland South,
Thornlands)*



Be ready for Summer

Redlanders have been urged to ensure they have disaster plans and kits ready, with much of the City facing a high bushfire risk as storm season arrives.

The Bureau of Meteorology is advising that we can expect hot, dry weather with an increased possibility of severe storms over the next few months.

And while fewer cyclones are predicted for the Coral Sea, it should be noted that each year since 1970 a cyclone has crossed the Queensland coast.

To ensure you can be best prepared should a potential disaster threaten, check out the information tailored for your area at www.redlanddisasterplan.com.au.

The Redland Local Disaster Management Group will continue

to be vigilant and provide information through its website, social media, 612 ABC radio and Bay FM radio throughout summer and it would be well worth connecting with Council’s social media feeds so you can keep up to date with the latest information.

While you may not live in a bushfire or flood-prone area, it doesn’t mean that you should not be prepared should you need to quickly evacuate your home.



Apply for a grant or sponsorship today and help invest in your community tomorrow

Grants and Sponsorship Program

Every year Redland City Council awards community grants and sponsorship to individuals and community groups across economic development, the arts, cultural heritage, environment, community development and sport and recreation.

Community Grants *Open January*

Funding applications will be accepted from Monday 25 January until Friday 26 February 2016.

Sponsorships *Open February*

Funding applications will be accepted from Monday 15 February until Friday 18 March 2016.



To apply for a community grant or sponsorship visit www.redland.qld.gov.au/grants after the opening date or ☎ 3829 8912

ENVIRONMENT



VOLUNTEER: ANGFA's Peter Johnson at IndigiScapes, where his club is breeding ornate rainbow fish for release into the wild.

Rainbows light up our creeks

Teach a man to fish, so the proverb goes, and you feed him for a lifetime. Teach him how to breed fish and he'll be restoring our waterways for generations to come.

That may well become the motto of the Queensland branch of the Australia New Guinea Fishes Association, whose members have teamed with the Redland IndigiScapes Centre to breed native fish to stock ponds and farm dams in local catchments.

They are using four breeding tanks at the Capalaba centre to produce thousands of ornate rainbow fish (*Rhadinocentrus ornatus*) or rhads to be given to landholders in the upper and lower Tingalpa, Erapah and Serpentine systems.

ANGFA's Peter Johnson said the collaboration, part of a Council program to improve the health of

local waterways, had the potential to make creeks a much more attractive place for Redlanders in more ways than one.

"We have started with rhads because it's one way of making a really big difference quickly," Peter said. "They also love eating mosquito larvae - in fact they are better at it than gambusia, which were brought in to eat mozzies but didn't do the job very well. Instead of eating the mozzie larvae, they ate the native fish eggs."

Redland City Council is already putting a lot of effort into improving creek banks and water quality, allowing native fish to thrive and hopefully keeping feral fish numbers in check.

Through the program, Peter said the club's members and IndigiScapes plan to make sure Redland rhad populations are

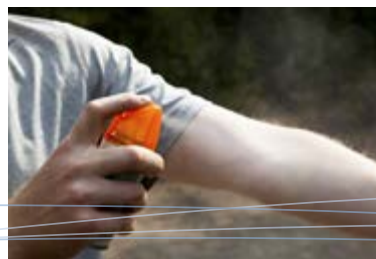
Keep the mozzies away this summer



Mosquito breeding season has begun. Council conducts regular ground and aerial treatments throughout the Redlands, including the Southern Moreton Bay Islands. Mosquito treatment is safe for you and the environment.

Protect yourself against mosquito bites by wearing long, loose fitting, light coloured clothing, using personal insect repellent and avoiding outdoor activities at dawn and dusk.

Manage mosquitoes around your home by emptying water from household items such as pot plant bases, boats, unscreened rainwater tanks, unchlorinated swimming pools, blocked roof gutters, bird baths and old tyres.



10299 11/15

More information: visit @ redlnd.cc/controlling-mozzies





SPECTACULAR: A Redlands' Rhadinocentrus ornatus or ornate rainbow fish. Photo: Gunther Schmida

“with us for our children, and our children’s children, to enjoy.”
 “The thing with feral fish is that they do very well in areas that have been disturbed,” Peter explained. “Improving the quality of the water and creek habitat will help native fish such as rhads to repopulate.”
 “There are a lot of challenges but if nature is given a chance, quite often it balances things out.”
 Peter said rhads were chosen because, although declining, they were not listed as threatened and permits were not needed to capture and breed them, although

there was a limit of 20 wild-caught fish per person. The rhad populations of each Redlands’ waterway were also distinct and their survival could be assured through the breeding program.
 It is hoped the program can be extended to other native species, particularly those which are now under threat. It also is set to extend to other areas, with neighbouring Logan City Council interested in the project.
 “It’s a really good thing that the Redlands has started because it is inexpensive and fairly simple to do. Redland City is

leading the way in waterways rehabilitation,” Peter said.
 He also urged people who enjoyed keeping fish to focus on native species rather than those which had become pests in our creeks, such as goldfish, tilapia and carp.
 “A lot of people really don’t know how much damage a goldfish from a pet shop can do if it gets into the wild,” Peter said.
 “They should try native fish instead. They would be amazed at the extraordinarily beautiful fish that live in their local creek ... the rainbow fish are quite spectacular.”

Rhad-ical idea

The Queensland branch of the Australia New Guinea Fishes Association meets at 7.30pm on the second Friday of even numbered months at the Bar Jai Community Hall, Clayfield, and visitors are welcome. The last one for this year will be on December 11.

Membership costs \$25 a year, with the funds going towards a variety of native fish conservation projects. Information: www.angfaqlld.org.au or www.facebook.com/angfaqlld

Partnerships with volunteers such as fish breeding and Bushcare groups are delivering real benefits for the City.

Cr Murray Elliott Division 7 (Alexandra Hills South, Capalaba)

R Dîner en Rouge

Thank you to the businesses and community members who supported this year’s Dîner en Rouge Mayor’s fundraiser for Redlanders affected by domestic and family violence. Together, we raised more than \$15,000 that will go towards supporting a housing application for Redlanders affected by domestic and family violence. And together, we can end violence in Redland City – and beyond.

Special thanks go to:

Media Partner



Platinum Sponsors



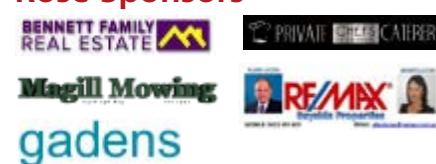
Ruby Sponsors



Pearl Sponsors



Rose Sponsors



Event Supporters



Event Partners



10322 11/15 OR

www.redland.qld.gov.au/dinerenrouge

DISCOVER

We're trailblazers, naturally

Getting out into the natural world is something we cherish in the Redlands, where residents and visitors alike have access a diverse range of great tracks, trails and foreshores

Flora and fauna abound in the Redlands - and it is among these native forests, along these foreshores and in these waters of the bay where residents and visitors alike can relax, ride, swim, fish and wander.

All this serenity is a mere 30km east of the bustling, busy-busy, business centre of Brisbane.

The Redlands is today a lifestyle haven, peopled by folk not

adverse to a little hard work yet always cognisant of the need of well-being through rest and recreation.

Here there are kilometre after kilometre of trails and pathways and waterways for any number of outdoor activities - from a simple walk along the foreshore to an engaging mountain bike ride through the forest to a peaceful island campsite.

Much work has been completed on gathering parcels of bushland into public reserves for walkers, cyclists and horse riders. More is being done to expand some areas, add further trails and new facilities plus better connect some of these areas, even into neighbouring council areas.

Here's just some of the great outdoor opportunities available in the Redlands.

Our City boasts many kilometres of top-class tracks and trails for enjoying our great outdoors lifestyle.

Cr Paul Gleeson
Division 9 (Capalaba)

Infrastructure spokesman

For maps and more information, visit "Recreation and Facilities" at **www.redland.qld.gov.au** or scan the QR code

www.redland.qld.gov.au/RecreationFacilities/





Walk in the park

FROM tropical palms and colourful parrots to scribbly gums and doe-eyed koalas - there's a welter of walking delights and every-day options through the natural beauties of Redlands.

Among these, the well-defined and organised pathways of Orchard Beach and nearby Weinam Creek reserve offer family-friendly outings and strolls for all types. Drop down to Redland Bay Park on the southern point of Torquay Road, park the car and stretch out.

From here, looking east, are the calming waterscapes of Moreton Bay and islands; that's North Stradbroke Island in the distance. Down the path to the foreshore is a top-of-the-morning spot, a great place to greet a sunrise.

From here it's easy walking - steady or smart - on defined paths. North is the mouth of Weinam Creek and a café. Or venture south to explore Point Talburpin Park. Close to here is the tranquil 100ha of Weinam Creek Wetland Community Park; wander at leisure through a magnificent natural reserve.



At a canter

Redland City Council's on-going preservation, and further acquisition, of natural reserves make it a top venue for horses and riding through native scrub.

There's the 46ha of the Don and Christine Burnett Conservation Area, accessed from Ford Road in Priestdale on the western edge of the City. This is part of the important Koala Bushland Co-ordinated Conservation Area and, as such, natural flora and fauna abounds. Around here, too, are the headwaters of Tingalpa Creek. So along with the eucalypts and wattles, there are families of koalas, possums, owls, frogs and more. Ride, look and listen.

In the southern part of the Redlands is the pristine Bayview Conservation Area, some 740ha of natural bush.

Here there are kilometre upon kilometre of fire trails for horses and riders to enjoy. Here, too, are hitching rails and water troughs - plus maps of the area - at some trail heads for comfort of horse and rider.



Born to ride

PLACES to go, places to ride, coffees to find - there's always a safe and pleasant path for cycling across the Redlands.

With more links completed between bikeways each season - plus ongoing co-operation from neighbouring civic authorities - riders around here could one day be cycling from Cleveland to Coolangatta.

Right now the Moreton Bay Cycleway, from Bribie Island to Redland, is already the longest cycleway on Australia's east coast.

Part of that is the Eddie Santagiuliana Way which starts (or finishes) at the Cleveland Railway Station.

There are a couple of little slopes on this one as it wends through parklands, wetlands and coastal forests on its way through to Thornlands. But it's an easy ride with a choice of stops for coffee along the way.

To the south of the City there's the Orchard Beach pathways and Weinam Creek reserve. Here there are more chances to take a breather down by Moreton Bay.



Beating about the bush

JUMPING lumps and humps on dirt tracks, skidding into berms, splashing through water or just pedalling with patience through the forest with eyes and ears attuned to the sights and sounds of the bush - these are the dreams of the everyday mountain biker.

The Redlands is recognised as one of the top spots in Queensland for riding dirt trails and the Redland Track Park, coming in from the Clark Street Reserve near the Cleveland swimming pool, is one of the jewels in our treasure chest of mountain bike trails.

Here among the eucalypts and casuarinas are trails up to 20km catering for riders from beginners to intermediates. It's a reserve where all the family can get out and ride the dirt. And it's a place where it's easy to park the family car right on the edge of the track park.

For those looking for something tougher, head south to the vast Bayview Conservation Area. Off Day's Road there's 470ha to ride, making it popular with professional mountain bikers for training and competition.



Stretching out

The Redlands boasts hours and hours of tracks and trails to prolong active lives.

Again, Redland Track Park comes into its own, with entry just across the road from the community swimming pool in Russell Street, Cleveland.

So a smart runner would park at the Clark Street Reserve, take off into the track park and hit the many dirt trails before heading back for a cooling shower and swim.

Worried about losing yourself in this patch of native scrub? Take the smartphone and check out the QR code on the bollards for map references. And remember, this 250ha park also hosts mountain bike riders, walkers and horse riders, so stay alert.

That multi-use also applies in the Point Halloran Conservation Area off School Road at Victoria Point where there's 86ha of coastal scrub for fine trail running through eucalypts and melalucca trees. Here, there's often the chance of spotting koalas and glimpses of Moreton Bay.



Water world

REDLAND Bay and Waterloo Bay are among the most protected parts of Moreton Bay, harbouring great stretches of water for all manner of water activities.

It could be fishing, sailing or just kayaking or paddleboarding. There are open waters, islands, mangroves and sandy beaches to explore across this part of the bay, sheltered in the most part by the 38km-long North Stradbroke Island, the world's second-largest sand island. Out here are schools of fish, dolphins, turtles, dugongs and flocks of water birds.

Across the City there are a number of spots to launch small craft. At Thorneside's peaceful Jack and Edna Finney Park there's a ramp for small watercraft to set off into the bay, popular in particular with canoeists. And at the Raby Bay Foreshore Park there's 5.8ha of parkland by the water and boating facilities.

Both these Redland access points for watercraft can be used on any tide and both have car parks and toilets.

Dreaming of a green Christmas

When it comes to the compliments of the season, one of the best is a pat on the back from yourself for helping the Redlands celebrate a green Christmas.

Much of what is stuffed into Santa sacks and Christmas hampers ends up being stuffed into your bins after the big day – wrapping paper, packaging, bottled, jars, cans, odds and ends.

And working out what is recyclable can be a bit tricky, especially with little hands helping to fill garbage bags during the clean up.

RedWaste Service Manager Rob Walford says that despite the best of intentions many Redlanders still drop their recyclables in the yellow-lid bin neatly tied up in plastic bags.

“But plastic bags are the number one offender when it comes to turning otherwise valuable glass, paper and cardboard, metals and plastics into useless rubbish,” Rob says.

“They are the greatest problem in the recycling process, followed by other contaminants placed in recycling bins such as nappies, garden and food waste, clothing and textiles.

“The mechanised sorting process simply cannot cope with plastic bags, which get caught in the

conveyor belts, jam spinning wheels and bring the entire sorting station to a halt.

“Never bag your recyclables as recycling concealed within plastic bags is sent straight to landfill. You can make your recycling count this Christmas simply by placing it loosely into your yellow-lidded recycle bin.”

Rob says the guesswork can be taken out of Christmas recycling by a bit of forward planning.

“When selecting wrapping paper, avoid foil-wrap and cellophane as these can’t be recycled,” Rob says.

“Ideally, opt for baskets, gift boxes or jars which can be re-used. And if you do buy gift wrap, choose recycled paper options and make sure it’s recycled again.

“You also can be creative. Kids’ artwork can make wonderful wrapping paper for gifts for proud parents and grandparents.”

Residents can cope with the sheer volume of waste with a little effort.

“Flattening recyclable packaging, cans and containers will allow you to fit as much as possible into your yellow-lidded bin.

The same applies for non-recyclables destined for general waste,” Rod says.

Adding local flavour to your festive feast

A local foodie offers a couple of holiday season delights featuring some very Redlands produce

They say a piece of yourself goes on the plate whenever you cook a meal. So it’s no wonder many of us feel pressured when it comes to Christmas lunch.

With the big day looming, it’s lucky locals have some great regional products to take advantage of.

Two locally grown and harvested ingredients that have been showcased this year are seafood and strawberries.

Georgia Barnes of Wellington Point brought Moreton Bay’s fabulous seafood to the fore during her participation in Channel Ten’s *Masterchef* competition.

The inaugural Relish Festival, brought to Cleveland’s Raby Bay by Hog’s Breath Café and Redland City Council, featured a whole range of locally grown and sourced produce in a spill of 70 stalls across the boardwalk.

And then there was Cleveland chef Steve Zyka’s cooking demonstration with Channel 7 TV personality and fisherman Paul Burt, which took centre stage at the Cleveland Caravan, Boating

and 4x4 Expo at the Redlands showground in September. Steve revealed some of the secrets to creating seafood staples such as salt and pepper calamari, prawn clusters and beer-battered fish.

Steve, who is regularly out on Moreton Bay in his tinnie, says some great seafood is being

It is well worth buying local, particularly the Redlands’ quality produce. We are blessed with traders who offer great quality, excellent service and variety of product.

*Cr Wendy Boglary
Division 1 (Wellington Point,
Ormiston)*

caught now in the Redlands and it will only get better around Christmas.

“Wild prawns can be caught in abundance and crabs are starting up again,” he says.

“The flavor of sand and mud crabs just keep getting better.



REDLANDS Bushcare
20 Years Celebrates

Since 1995, the community has worked together with Redland City Council to restore and monitor our local bushland areas with great success.

Be part of the community spirit – join one of the Bushcare groups, or look at starting your own.

To keep up to date on events and find out more about the Bushcare Program contact a Bushcare Officer.



**Get hands-on
Join a Bushcare Group!**

Our Bushland Our Future

IndigiScapes
www.indigiscapes.com.au
07 3824 8611
indigiscapes@redland.qld.gov.au

Redland CITY COUNCIL

Environmental Education in the Redlands

BUY LOCAL:
Chef Steve Zyka
is always keen
to highlight
Redlands'
produce.



Panko prawns and apple slaw with lime coriander mayo

Serves 4 as a tapas or entree

750g local banana prawns
Rice bran oil
50g Panko bread crumbs
50g plain flour
1 egg
1 cup milk
¼ purple cabbage
1 red apple
1 lemon
1 lime
½ white onion
1 cup whole-egg mayonnaise
100g red cherry tomatoes
Sprigs of coriander
Sprigs of basil



Preheat a deep-fryer with rice bran oil to 170 degrees.

Remove the head and shell prawns, leaving the tail. Insert a bamboo skewer through each prawn to keep them from curling when frying. Do this by entering the soft part of the prawn's flesh beneath the tail and push the skewer through the prawn to its top.

Set up a bread crumbing station by placing plain flour on a plate, whisking the milk and egg in a bowl beside it and placing the Panko bread crumbs on a second plate. Coat each skewered prawn in flour and shake off the excess. Then cover each prawn thoroughly in egg wash and rub them in the Panko bread crumbs. Set aside.

Remove the root of the cabbage and slice it thinly. Using a julienne cut, chop the apple into long, thin strips. Chop a wedge of lemon and squeeze it over the apple and toss to prevent oxidation (turning brown). Next, julienne cut the onion into long, thin strips. Toss the strips with your hands on a board to un-clump them. Mix the sliced cabbage, apple and onion in a bowl and toss through up to ½ a cup of mayo until the ingredients are nicely coated. Season with salt and pepper. Garnish the salad with a handful of chopped, red cherry tomatoes and basil. Set aside.

Zest lime, then cut in half and squeeze into a bowl. Add ½ a cup of mayonnaise. Roughly chop coriander and add to the bowl. Season the dipping sauce with salt and pepper.

Place the skewered prawns in the deep fryer for 40 to 60 seconds until the crumbs are golden brown. Remove the prawns and slide each prawn off its skewer.

Place the prawns, the lime coriander dipping sauce and the salad onto a family entrée board and serve.

"Why would you search for an imported product when what is being caught locally is a premium product right on our doorstep."

Steve's café, Zyka's Kitchen in Cleveland, has grown in popularity since producing tapas plates Thursday to Saturday nights.

One of his sell-out tapas nights was Good Friday. He did seared sea scallops with sweet potato puree and prosciutto, crab cakes with lemon dill mayo and panko prawns and slaw – a recipe he said is perfect for a Christmas entrée or platter.

"A family could cook my Panko prawns in half an hour and you want Christmas lunch to be simple and easy, so there's less stress and more time to enjoy yourself," he says.

"I think what goes on the plate tells you who the chef is – it tells you about their character.

"So what better way to dine in the Redlands this Christmas than with some summer produce like locally caught seafood and home-grown strawberries?"



Candied strawberry sauce to add to chocolate brownie curls

Serves 4

1 punnet of strawberries
50g butter
50g brown sugar
Chocolate brownies

Roughly slice the strawberries into halves.

In a pan, melt the butter on a low heat. Once it has melted, add sugar and sir with a wooden spoon until combined. Simmer until the mixture slowly bubbles.

Add the strawberries. The strawberries will slowly cook, releasing their syrup. Simmer for a further five to six minutes until the strawberries are tender, but not over cooked or soft. Set aside.

Take your favorite chocolate brownies and using a grater, grate the brownie in long strokes down the large grate size to achieve long, thick curls.

Place spoonfuls of candied strawberry sauce and syrup in a desert bowl. Add a scoop of vanilla ice cream and cover with a generous handful of chocolate brownie curls and serve.



Travelling to Straddie has never been easier with Stradbroke Ferries

Regular Vehicle Ferry Transfers daily

Passenger ferries depart hourly with convenient bus connections from Cleveland Train Station

NSI buses connect with passenger ferry from Dunwich Terminal to Point Lookout

07 3488 5300

www.stradbrokeferries.com.au

STRADBROKE FERRIES

EVENTS

For rolling updates on Redlands events go to www.redland.qld.gov.au and click on 'What's On' in the Fast Find panel

December

12

Charity concert

Carols for a Change is Redland City Choir's annual charity concert at the Redland Performing Arts Centre in support of The Redland Foundation's efforts to help victims of domestic violence. From either 2pm or 7pm, you will get to immerse yourself in the beauty of Christmas song with the Redland City Choir and special guests Scott Muller from the Ten Tenors and The Voice Australia finalist Jacob Lee, among others. Tickets: adults \$20, seniors/pensioners \$15, students \$15, 14 years and under \$10, choir children \$5. Bookings: 3829 8131, visit the RPAC Box Office or book online at www.rpac.com.au.

Game time

Get down to Cleveland Library, on the corner of Bloomfield and Middle streets, from 1pm-3.30pm for the Mario Kart championship. Places are limited for this round-robin-style tournament for ages 10 years-plus so you will need to book quickly on 3829 8770. The winner gets a prize.



Charity bash

The Silver Spurs Bullride Series at the Capalaba Tavern supports the Children's Hospital Foundation. From 3pm, there will be a heap of activities for all of the family, including kid's entertainment, sideshow alley, a guest appearance from Santa and live music. Raffles will be held on the day, with all proceeds going to charity. Tickets available at www.moshtix.com.au or from the venue: adults \$25, children \$10, family packages \$50.

13

Full voice

Capalaba Presbyterian Church is hosting Carols in the Bush at Redlands IndigiScapes Centre, Runnymede Road, Capalaba. There will be a free sausage sizzle and children's program from 5pm, with carols from 6pm. Parking is available at IndigiScapes. Take a chair or rug and insect repellent.



Wello has all the right moves

The fancy footwork will be returning to Wellington Point Village on Saturday 16 January, when "Dancing in the Streets" returns for the new year.

From 7pm until late, this popular and fun get-together is a Village highlight on the third Saturday of the month.

Head along and try it out - it doesn't matter if you don't know how, there's always someone happy to show you or you can just go with the flow.

The Village offers a great selection of restaurants and cafes.



15

Glowing cards

Get into the spirit of Christmas and make your own cards which glow at Capalaba Library, Noeleen Street, from 10am-11.30am. This is for children aged eight years and up but there are only 20 places available, so you will need to be quick. Bookings: 3843 8010.

17

Itty Bitty Stars

This is an end-of-year adventure to bring life back to Christmas land. Getting there is only half the journey. Use the amazing Octatron teleport machine to collect star power through dance and movement - it's your only means of traveling to the magical world of Christmas land. It's on from 10am-10.45am at Cleveland Library, Bloomfield Street, and from 2pm-2.45pm at Capalaba Library, Noeleen Street. There will also be a session on Friday, 18 December, from 10am at Victoria Point Library, Bunker Road. Check the What's On calendar at www.redland.qld.gov.au for booking details.

20

Christmas By Starlight

This year's community carols will be at Sirromet Winery, the Redlands' premier venue for international artists.



Hosted by *The Block's* Shelley Craft and television personality Brett Annable, the free family-friendly event will also boast an animal zoo, jumping castles, climbing wall and a visit from Santa, plus plenty of food stalls from 4pm, followed by the children's show, including "Animals Rock", at 5.15pm. You will get to sing along with a host of national and local talent, including *The Voice Australia's* Darren Percival, powerhouse singing trio Tenori and Redlands' own internationally acclaimed Mirusia Louwerse. The main event and its dazzling lighting effects will be from 6pm, with a spectacular fireworks finale at about 8.30pm.

24

Christmas by the bay

Celebrate Christmas Eve at the Redland Bay with special guests Robbie James and JJ Harris. Robbie has been with GANGgajang since its inception 30 years ago and they'll be marking this milestone with a new release due later this year. JJ started his career as a teenager in the mid eighties playing drums with Divinyls. The duo focuses mainly on Australian songs from their musical family tree.

31

See in the new year

See the year out with an event for all ages at the Redland Bay Hotel. Youngsters will love the "fluoro and glow" party and jumping castle. There will be live entertainment from 5pm, with karaoke from 8pm. You will also be dazzled by the fun and fireworks at Cleveland's GJ Walter Park.



Susan Kemp, Island Sentry II 2015, synthetic polymer paint on canvas. Courtesy of the artist

Local flavour to galleries' summer sensations

Art lovers will find a celebration of local artistry at Redland Art Galleries over summer.

In Focus 2015 and *Sense of Coochie: Flying Arts Touring Curator Project* highlight diverse and thought-provoking works that tell their own unique stories of the Redlands.

Presented simultaneously at both the Cleveland and Capalaba galleries, *In Focus 2015* celebrates

the importance of art groups to the cultural life of the region.

A dozen local art groups are participating in *In Focus 2015*, which can be seen at the Capalaba gallery until Sunday, 24 January, and the Cleveland gallery until Sunday, 17 January.

Sense of Coochie: Flying Arts Touring Curator Project, which continues at the Cleveland gallery until Sunday, 17 January, features new work by The Coochie Art

Group members and is curated by Nancy Brown.

The Coochie Art Group is a passionate group of local artists who have been holding Coochiemudlo Island art classes since the 1970s.

Nurturing local arts and culture through exhibitions such as these is a key priority for the gallery.

Information: artgallery.redland.qld.gov.au

Blast from the past

Head to Cleveland's GJ Walter Park for the New Year's Eve Retro Cruise night, boasting plenty of classic cars, music, gourmet food and custom culture. This is a follow up to the recent and very successful retro market, and promises to be a particularly vibrant and colourful event.

January

12

IT help

Southern Moreton Bay islanders can book a 30-minute one-on-one session on a range of IT topics at the Russell Island Library. Information and bookings: Redland Libraries' Outreach Services Branch 3829 8317.

13

Meet the author

Catch up with children's author Samantha Wheeler and find out more about native creatures featured in *Smooch & Rose*, *Spud & Charli* and *Mister Cassowary*, Samantha's latest thrilling adventure for animal lovers. She will be at Capalaba Library, Noeleen Street, from 10.30am-11.30am. Bookings: 3843 8010.

26

Australia Day

Keep an eye on Council's What's On and Events pages for what's happening.

February

2

Get in the act

The Youth Ensemble run by Audax Industria Ensemble kicks off at the Redland Performing Arts Centre, Cleveland. This is a training and performance program which runs for six months and provides students with the opportunity to engage with Audax Industria Ensemble company members. As part of the program, youngsters of high school age will get to do both intensive training and professional rehearsals before performing for the community at the conclusion of the program. Find out more at www.facebook.com/audaxindustriaensemble

27

Market with a twist

The Retro Eat Boutique Markets return to Cleveland's Bloomfield Street. The classic cars, music, gourmet food, retro style and custom culture and highlights of this colourful event.

28

Green day

Touring in support of his first solo album in more than six years, *The Great Unknown*, Rob Thomas hits the green at Sirromet Winery, Mt Cotton, along with Pete Murray and, making his a Day on the Green debut, Darren Middleton of Powderfinger fame. Tickets from Ticketmaster: Platinum \$199.90, gold \$179.90, silver \$139.90, general admission (BYO chair & rugs) \$105.90. Booking fees also apply. Garden Bar upgrade \$130. Info: www.sirromet.com

March

13

Ready to rock

Check out the hotrods and hotter music at the inaugural Redlands Rockabilly Revival. This ultra-cool one-day street celebration of the fun elements of the classic era of rock 'n' roll include live music and DJs, fabulous hotrods, dancing, displays of local artists' works, market stalls and a host of other activities. Best of all, it's free. The action will be in Bloomfield Street in the heart of Cleveland throughout the day. Keep an eye on Council's What's On and Events pages for updates.



13

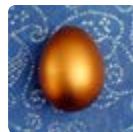
Day on the Green

Rocker Bryan Adams returns to the green at Mt Cotton's Sirromet Winery for the first time since 2005, with special guests Baby Animals and The Superjesus. Canada's most successful singer ever has been making musical history for more than three decades and has more than 65 million album sales, 21 top ten hits and seven number one singles, topping the charts in more than 40 countries around the world in the process. Tickets from Ticketmaster: Platinum \$199.90, gold \$159.90, silver \$129.90, general admission (BYO chair & rugs) \$105.90. Booking fees also apply. Garden Bar upgrade \$130. Info: www.sirromet.com

28

Family festival

Save the date for the Redlands Easter Family Festival, which has been providing free family fun every Easter for 15 years at Cleveland's Norm Price Park showgrounds. This is a brilliant option for families on a budget. The churches of the greater Redland City community combine to provide the event to the public for free.



Stay connected

Keep up to date with the latest events in the Redlands by subscribing to our What's On e-newsletter at www.redland.qld.gov.au/WhatsOn



Redland Libraries



Summer by the book

Reading can be rewarding for local children and adults in more ways than one this summer.

Those who sign up for Redlands Libraries Summer Reading Club - which is open now - have the chance of winning great prizes, including gift vouchers and book and game vouchers.

To get involved, register at your local Redland library or log on to www.redland.qld.gov.au/library and go to "Redland Libraries".

Fill in the entry form given to you when you register or download a copy.

The idea is to read as many library books as you can over the holiday break.

When you finish a book, complete the form and drop it in the Summer Reading Club entry box at your library. Every book you read means another entry in the weekly prize draw and more chances to win.

You can ask library staff for more entry forms if you need them.

Summer Reading Club will end on 31 January, with a draw for the major prizes on Friday, 5 February.

Winners will be notified by phone and presented with their prizes at their local library.

The major draw prizes are:

ADULT 18+

1st Samsung Galaxy Tab 3 A 8" Wi-Fi

2nd Lenovo Tab 2 A7-10 7" tablet

3rd \$50 book voucher

JUNIORS (0 - 5 years)

1st \$100 book and game bundle

2nd \$70 book and game bundle

3rd \$30 book and game bundle

JUNIORS (6 - 11 years)

1st \$100 book and game bundle

2nd \$70 book and game bundle

3rd \$30 JB Hi-Fi vouchers

TEENS (12 - 17 years)

1st Smartphone projector + \$50 JB Hi-Fi vouchers + a book

2nd Moki headphones + \$20 JB Hi-Fi vouchers + a book

3rd \$20 JB Hi-Fi vouchers + a book

And, remember, there also will be five weekly prize draws from 12 December.

You will also find a range of other great activities at your local library this summer, including early literacy programs like Baby's Day Out and Rhyme Time. There is also 3D Design for Beginners, Robotics and Coding for Children.

Also call into Story Corner (one to five years) and share with us our favourite stories and rhymes.

You will find dates, venues and session times on the library website or under "What's On" at www.redland.qld.gov.au.

Mainland libraries

Capalaba Library 3843 8012

Noeleen Street, Capalaba

Cleveland Library 3829 8576

Cnr Bloomfield and Middle Streets, Cleveland

Victoria Point Library 3884 4000

7 - 15 Bunker Road, Victoria Point

Opening Hours

Monday: 9am - 5pm

Tuesday: 9am - 5pm

Wednesday: 9am - 5pm
(7.30pm for Cleveland)

Thursday: 9am - 7.30pm

Friday: 9am - 5pm

Saturday: 9am - 4pm

Sunday: Closed

(Closed from 4.30pm on Thursday, 24 December to Monday, 4 January.)

Island libraries

Amity Point Library 3409 7029

Ballow Street, Amity Point

Wednesday: 9am - 12pm

Thursday: 1.30pm - 4.30pm

Saturday: 8.30am - 11.30am

(Closed from 4.30pm on Thursday, 24 December - Wednesday, 6 January.)

Dunwich Library 3409 9529

Ballow Road, Dunwich

Tuesday: 9am - 12pm

Thursday: 1pm - 5pm

Saturday: 8.30am - 11.30am

(Closed from 4.30pm on Thursday, 24 December - Tuesday, 5 January.)

Point Lookout Library 3409 8036

East Coast Road, Point Lookout

Tuesday: 10am - 12.30pm & 1.30 - 5.30pm

Wednesday: 9am - 1pm

Friday: 1pm - 5pm

(Closed from 1pm on Wednesday, 23 December - Tuesday, 5 January.)

Russell Island Library 3409 1684

22 High Street, Russell Island

Wednesday: 2pm - 6pm

Thursday: 9.30am - 12.30pm & 1.30pm - 4.30pm

Friday: 9am - 1pm

Saturday: 9am - 1pm

(Closed from 4.30pm Thursday, 24 December - Wednesday, 6 January.)

The Mobile Library timetable is available at www.redland.qld.gov.au

RACQ
get
ready
QUEENSLAND

qld.gov.au/getready



Redland
CITY COUNCIL



DISASTER
MANAGEMENT
PLAN

ARE YOU READY REDLANDS?

For information on what to do and where to go in an emergency, visit your Local Disaster Management Plan at www.redlanddisasterplan.com.au and select your suburb or island.

For local storm and bushfire updates:

🌐 www.redlanddisasterplan.com.au

📘 facebook.com/RedlandCouncil

🐦 twitter.com/RedlandCouncil

📻 Tune your radio in to 612 ABC AM & Bay FM 100.3

START NOW!
Prepare a family
emergency plan,
an emergency kit
and your home

We're all in this together
www.redlanddisasterplan.com.au