

Community Infrastructure Plan

Supporting Document for the Community Purposes ICS

Redland Shire Council

July 2007

This Report has been prepared on behalf of:



This report has been prepared by:

SGS Economics and Planning Pty. Ltd.

ACN 007 437 729

Level 9, 269 Wickham Street

PO Box 1177

Fortitude Valley QLD 4006

phone: 61 7 3124 9026

fax: 61 7 3124 9031

email: sgsqld@sgsep.com.au

web: www.sgsep.com.au

Disclaimer

This report was prepared on behalf of the **Redland Shire Council**. The report was prepared by SGS Economics and Planning Pty Ltd.

Any representation, statement, opinion or advice expressed or implied in this publication is made in good faith. SGS Economics and Planning Pty Ltd is not liable to any person or entity for any damage or loss that has or may occur in relation to that person or entity taking or not taking action in respect of any representation, statement, opinion or advice referred to above.

Table of Contents

1	Introduction	2
2	Community Infrastructure	2
2.1	Facilities versus Services.....	3
3	Overview of Redland Shire	4
3.1	Communities of Interest.....	4
3.1.1	Definition of Different Levels of Parks	5
3.2	Demand Streams/Expected Population and Households.....	7
4	Method to Determine Needs	9
4.1	Current Provision	10
4.2	Expressed Need	10
4.3	Desired Standards of Service	11
5	Needs Assessments and Required Facilities	15
5.1	Community Facilities Infrastructure	15
5.2	Open Space Infrastructure	17
6	Summary of Community Infrastructure for Redland Shire.....	18
6.1	Community Facilities Infrastructure	18
6.1.1	Existing and Planned Community Facilities	19
6.2	Open Space Infrastructure	20
6.2.1	Existing and Planned Open Space Facilities – Alexandra Hills.....	21
6.2.2	Existing and Planned Open Space Facilities – Birkdale	22
6.2.3	Existing and Planned Open Space Facilities – Capalaba.....	23
6.2.4	Existing and Planned Open Space Facilities – Cleveland	24
6.2.5	Existing and Planned Open Space Facilities – Mt Cotton	25
6.2.6	Existing and Planned Open Space Facilities – Ormiston.....	26
6.2.7	Existing and Planned Open Space Facilities – Redland Bay	27
6.2.8	Existing and Planned Open Space Facilities – Sheldon	28
6.2.9	Existing and Planned Open Space Facilities – Thorneside	29
6.2.10	Existing and Planned Open Space Facilities – Thornlands	30
6.2.11	Existing and Planned Open Space Facilities – Victoria Point	31
6.2.12	Existing and Planned Open Space Facilities – Wellington Point	32
Appendix 1	33

1 Introduction

This paper presents the Community Infrastructure Plan and serves as a supporting document for the ICS current as of July 2007. It is an update from SGS's report in November 2006.

2 Community Infrastructure

Community infrastructure can be described as services and facilities that support the functioning of individuals, families and groups, to maximize their potential for development and to enhance community wellbeing. It includes:

- Health Services
- Education
- Open Space, Parks and Gardens
- Sport, Leisure and Recreation Opportunities,
- Culture and information
- Community Meeting Spaces
- Facilities for Youth,
- Family and children services
- Older persons facilities
- Information Services
- Homeless Facilities and Services
- Social Housing
- Public Amenities
- Emergency Services
- General Services

A range of players have a role in the planning and delivery of community infrastructure, including in Redland's situation, Redland Shire Council, State Government, Commonwealth Government, community providers and the private sector. However, Council can only charge for those components that they are responsible for.

As such, those facilities that are Council operated have been included in the ICS and include:

- Community / Neighbourhood Centres;
- Youth Centres;
- Senior Citizens Centres;
- Libraries;
- Aged Care Services and Facilities;
- Disabled Care Services and Facilities;
- Cultural/Arts Facilities; and,
- Open Space and Recreation.

It is noted that some of the services listed above will have land use implications even though Council may not be responsible for the direct provision of facilities and services - e.g. aged care services, some health facilities.

2.1 Facilities versus Services

Although the definition of community infrastructure encompasses both facilities and services, this study is concerned explicitly with the need to provide physical infrastructure in Redland Shire. A building, provided it is designed and managed properly, can be used to house and deliver any number of services, programs and activities. Often communities will not express an explicit need for an actual physical centre, rather which they wish for the likes of arts and crafts activities, dance classes, Meals on Wheels service etc. to be provided. Understanding this type of expressed need is fundamental to determining the extent of facilities and specific designs required to support the (often diverse) range of activities that people wish to see provided in a community.

Distinguishing between facilities and services is also an important consideration in determining facilities requirements based on benchmark (normative) standards. Benchmarks provide a rate of provision for individual service types, not facilities. When translating demand for services into facilities requirements, consideration must be given to a range of opportunities, including co-locate multiple services, flexible design of facilities and so on, so that spaces provided can serve multiple functions. These considerations have been incorporated into Guiding Principles (refer Table 5) and have been applied to the benchmarking process to determine infrastructure needs.

3 Overview of Redland Shire

Redland Shire in south-east Queensland is made up of mainland and island communities. It is located on Moreton Bay and borders Brisbane City, Logan City and the Gold Coast. Combining quality living and working environments, the Shire enjoys a relaxed coastal lifestyle, strong community values and outstanding cultural and natural attractions. Ongoing population and business growth since Redland Shire Council was formed in 1949 have not detracted from the Shire's special character. It maintains an easygoing pace, a wide variety of land and water-based recreational opportunities, extensive education offerings, excellent healthcare facilities and a thriving tourism industry. Just 30 minutes drive south-east of Brisbane, Redland Shire takes in approximately 537 square kilometres. Cleveland is its civic centre and Capalaba the main business/transport hub. As well, it incorporates hinterland areas such as Mount Cotton and island communities of Southern Moreton Bay (Lamb, Karragarra, Macleay and Russell Islands), Coochiemudlo Island and the prime visitor drawcard of North Stradbroke Island. As one of the fastest growing local government areas in south-east Queensland, the Shire's population in June 2006 was 127,627 (ABS, 2006). This is predicted to grow 1.6% every year, reaching 176,022 by 2026.

'Redland Shire Council Corporate Plan, 2004 – 2010'

3.1 Communities of Interest

The determination of the communities of interest (COI) to which the Infrastructure Charges will apply was also developed through detailed discussions between SGS and relevant Council officers. References were sourced from past council documents such as the Communities Facilities and Services Study and the Open Space Plan. Through these investigations it was agreed that the Regional, District and Local Communities for community facilities and open space facilities be defined as shown in Figure 1. Figure 2 then provides a map of the Redland Shire. Overall, the Shire consists of 17 local areas which form 4 districts. It is noted that as of June 2007 Council has decided not to include any of the Islands in the ICS:

Figure 1. Composition of the Community of Interest Hierarchy

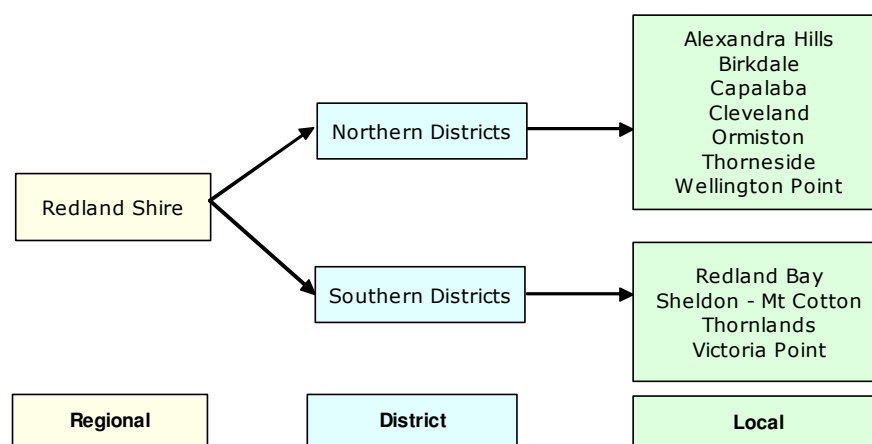


Figure 2. The Redland Shire Map

Map generated by SGS using Mapinfo based on ABS Data 2001

3.1.1 Definition of Different Levels of Parks

The Integrated Open Space Services Report and the Park User and Satisfaction Benchmark Surveys (Dec 2005 - Feb 2006, Oct 2004 - Feb 2005, Nov 2002 - March 2003, October 2001, June 2000, August 1999 and August 1998 editions)¹, determined how people utilise parks at different levels in the hierarchy. The catchment areas for the parks were based on these surveys. The chargeable areas for a park, according to this method, were as follows:

¹ Participating Councils at various times: Redlands, Caboolture, Gold Coast, Harvey Bay, Pine Rivers, Ipswich, Maroochy, Logan, Redcliffe, Toowoomba and Caloundra

- Local Park – 100% chargeable to the local area
- District Park – 30% chargeable to the local area, 70% chargeable to the entire shire
- Regional Park – 30% chargeable to the local area, 70% chargeable to the entire shire

This methodology does not apply to all the parks, as some district and regional parks were charged entirely to the local area (especially on the Southern Bay Islands, as access is considered limited) while some (only two) were charged on a 50/50 local/shire basis. The determination of chargeable areas for each individual park was provided by Council.

To assist in defining different levels of parks in Redland Shire, the following was defined by Council:

What defines a Local Park?

It is a park servicing the people of one residential neighbourhood usually within 500m to 800m safe walking distance. 500m is the preferred distance residents should be from a local park. It provides recreation opportunities closest to home. Activity is usually of an informal nature. The park may have a swing set and seating and often a kick about space. Good supervision and safety considerations are essential as these parks are often small with close street frontage and adjoining residences.

What defines a District Park?

A district park is a usually larger than a local park serving several adjoining neighbourhoods within a 5km radius. A district park typically provides a more comprehensive range of facilities including sporting fields, clubhouse, public amenities, car parking playground equipment, BXM, skate parks, dog off leash areas, basketball court, BBQ and picnic facilities and sometimes access to Moreton Bay. It would be expected that people would drive to a district park and stay longer due to the variety of activities that can be undertaken. These are great parks for events, gatherings, family parties and celebrations.

What defines a Regional Park?

Regionally significant open space is land which is regionally significant for any open space function. (Open Space for Sport and Recreation Planning Principals and Implementation Notes – Sport and Recreation Qld 2003). A regional recreation park is a tract of land, large in some cases, intended to serve the Shire and adjacent communities who live within a 10km range. In the Redlands, regional parks are often not large but are situated beside Moreton Bay, often with direct water access via the beach or a boat ramp. Visitors to these parks come from all over Southeast Queensland and some parks attract interstate and international visitors. The recreation, leisure and visual amenity of these parks is highly desirable. Facility quality and quantity should reflect the high visitation numbers and standard that the Shire wants to present to the rest of the region and interstate.

Regional sport parks are high quality facilities, developed in the Redlands for a specific code. Regional sporting venues in the Shire cater for baseball, softball, AFL, cricket and netball, amongst others. Competitors travel long distances to train and compete at these parks. Lighting, field and clubhouse facilities usually reflect the standard of competition.

'Redland Shire Council

3.2 Demand Streams/Expected Population and Households

The demand stream or population growth pattern expected in the Redland Shire over the next 15 years was based on the information provided by Veitch Lister Consulting via GHD. The information, allocated according to the local communities of interest is provided in the tables below. Table 1 presents the population projections by each community of interest in Redland Shire until 2021. Table 2 and Table 3 show the population per household rates and number of household projections to 2021, respectively. Please note that this table excludes the Islands.

Table 1. Population Projections by Community of Interest (Local) (excludes the Islands)

Community Of Interest	Population																	
	2004	2005	2006	2007	2008	2009	2010	2011	2012	2013	2014	2015	2016	2017	2018	2019	2020	2021
Alexandra Hills	17,692	17,715	17,738	17,761	17,783	17,806	17,829	17,852	17,884	17,916	17,949	17,981	18,013	18,020	18,026	18,033	18,039	18,046
Birkdale	14,440	14,595	14,749	14,904	15,058	15,213	15,367	15,522	15,762	16,002	16,241	16,481	16,721	16,866	17,011	17,155	17,300	17,445
Capalaba	17,799	18,005	18,212	18,418	18,624	18,830	19,037	19,243	19,555	19,867	20,179	20,491	20,803	20,952	21,100	21,249	21,397	21,546
Cleveland	13,889	14,018	14,148	14,277	14,406	14,535	14,665	14,794	15,049	15,304	15,560	15,815	16,070	16,120	16,170	16,220	16,270	16,320
Ormiston	5,669	5,727	5,786	5,844	5,903	5,961	6,020	6,078	6,239	6,399	6,560	6,720	6,881	6,987	7,093	7,200	7,306	7,412
Redland Bay	9,535	10,102	10,668	11,233	11,801	12,368	12,934	13,501	14,379	15,257	16,135	17,013	17,891	18,489	19,087	19,685	20,283	20,881
Sheldon-Mt Cotton	4,935	5,182	5,429	5,676	5,924	6,171	6,418	6,665	7,066	7,467	7,867	8,268	8,669	9,121	9,573	10,025	10,477	10,929
Thorneside	3,496	3,503	3,510	3,517	3,524	3,531	3,538	3,545	3,591	3,637	3,682	3,728	3,774	3,786	3,799	3,811	3,824	3,836
Thornlands	9,695	10,162	10,628	11,095	11,562	12,029	12,495	12,962	13,731	14,500	15,269	16,038	16,807	17,135	17,464	17,792	18,121	18,449
Victoria Point	13,674	13,924	14,174	14,424	14,673	14,923	15,173	15,423	15,860	16,297	16,735	17,172	17,609	17,696	17,784	17,871	17,958	18,045
Wellington Point	10,196	10,370	10,544	10,718	10,893	11,067	11,241	11,415	11,666	11,917	12,169	12,420	12,671	12,742	12,814	12,885	12,956	13,027
Total	121,020	123,303	125,586	127,869	130,151	132,434	134,717	137,000	140,782	144,564	148,346	152,128	155,909	157,915	159,920	161,925	163,931	165,936

Table 2. Population Per Household Rates by Community of Interest (Local)

Community Of Interest	Population per Household Rates																	
	2004	2005	2006	2007	2008	2009	2010	2011	2012	2013	2014	2015	2016	2017	2018	2019	2020	2021
Alexandra Hills	2.97	2.97	2.97	2.97	2.97	2.97	2.97	2.97	2.97	2.97	2.97	2.97	2.97	2.97	2.96	2.96	2.96	2.96
Birkdale	2.95	2.95	2.94	2.94	2.93	2.93	2.92	2.91	2.91	2.90	2.90	2.89	2.88	2.87	2.86	2.86	2.85	2.84
Capalaba	2.83	2.82	2.81	2.79	2.78	2.77	2.76	2.74	2.73	2.72	2.70	2.69	2.67	2.66	2.65	2.64	2.63	2.62
Cleveland	2.45	2.44	2.43	2.42	2.41	2.40	2.39	2.38	2.37	2.36	2.35	2.34	2.33	2.32	2.32	2.31	2.31	2.30
Ormiston	2.69	2.69	2.69	2.68	2.68	2.68	2.67	2.67	2.67	2.67	2.66	2.66	2.66	2.64	2.62	2.61	2.59	2.57
Redland Bay	2.73	2.73	2.73	2.73	2.72	2.72	2.72	2.72	2.72	2.72	2.72	2.71	2.71	2.71	2.71	2.71	2.71	2.71
Sheldon-Mt Cotton	3.06	3.06	3.06	3.07	3.07	3.08	3.08	3.08	3.07	3.06	3.05	3.04	3.03	3.03	3.03	3.04	3.04	3.04
Thorneside	2.35	2.34	2.32	2.31	2.30	2.28	2.27	2.26	2.27	2.27	2.28	2.29	2.29	2.30	2.31	2.31	2.32	2.33
Thornlands	2.90	2.89	2.87	2.85	2.84	2.82	2.80	2.79	2.78	2.78	2.78	2.77	2.77	2.71	2.66	2.60	2.55	2.49
Victoria Point	2.78	2.77	2.76	2.75	2.74	2.73	2.71	2.70	2.69	2.68	2.67	2.66	2.64	2.65	2.66	2.67	2.68	2.69
Wellington Point	2.85	2.85	2.84	2.84	2.83	2.82	2.82	2.81	2.80	2.80	2.79	2.78	2.77	2.76	2.75	2.74	2.74	2.73
Whole of Shire	2.79	2.79	2.78	2.77	2.76	2.76	2.75	2.74	2.74	2.73	2.72	2.72	2.71	2.70	2.69	2.68	2.67	2.66

Table 3. Household Projections by Community of Interest (Local)

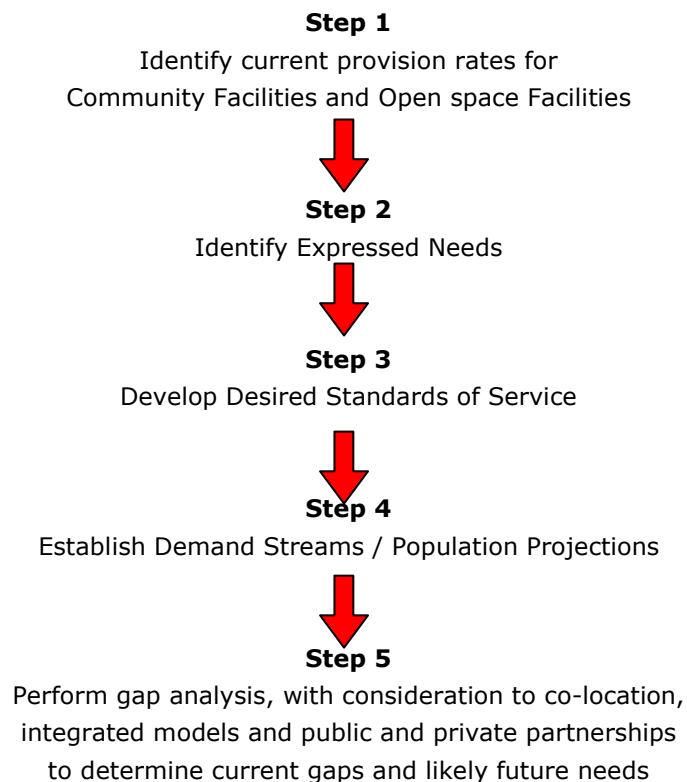
Community Of Interest	Households																	
	2004	2005	2006	2007	2008	2009	2010	2011	2012	2013	2014	2015	2016	2017	2018	2019	2020	2021
Alexandra Hills	5,951	5,959	5,967	5,975	5,984	5,992	6,000	6,008	6,021	6,034	6,046	6,059	6,072	6,076	6,080	6,085	6,089	6,093
Birkdale	4,888	4,950	5,012	5,074	5,137	5,200	5,263	5,326	5,420	5,514	5,609	5,704	5,800	5,869	5,938	6,008	6,078	6,149
Capalaba	6,290	6,390	6,492	6,594	6,697	6,801	6,906	7,012	7,162	7,314	7,467	7,622	7,779	7,865	7,953	8,041	8,130	8,219
Cleveland	5,661	5,740	5,819	5,900	5,981	6,062	6,145	6,228	6,360	6,493	6,627	6,763	6,899	6,938	6,977	7,017	7,056	7,096
Ormiston	2,106	2,130	2,154	2,179	2,203	2,227	2,252	2,276	2,338	2,400	2,462	2,524	2,586	2,644	2,703	2,763	2,824	2,886
Redland Bay	3,492	3,701	3,911	4,121	4,331	4,542	4,752	4,963	5,289	5,615	5,941	6,268	6,595	6,817	7,039	7,262	7,484	7,707
Sheldon-Mt Cotton	1,614	1,693	1,771	1,850	1,928	2,006	2,084	2,162	2,300	2,439	2,579	2,719	2,861	3,009	3,156	3,303	3,450	3,597
Thorneside	1,489	1,500	1,511	1,523	1,534	1,546	1,557	1,569	1,585	1,600	1,615	1,631	1,646	1,647	1,647	1,648	1,648	1,649
Thornlands	3,341	3,522	3,705	3,890	4,078	4,267	4,459	4,653	4,935	5,218	5,502	5,787	6,072	6,316	6,570	6,835	7,111	7,400
Victoria Point	4,923	5,032	5,142	5,252	5,364	5,476	5,589	5,703	5,891	6,081	6,273	6,467	6,662	6,673	6,684	6,695	6,706	6,717
Wellington Point	3,573	3,642	3,711	3,780	3,850	3,919	3,990	4,060	4,161	4,263	4,365	4,468	4,571	4,612	4,653	4,694	4,736	4,778
Whole of Shire	43,328	44,259	45,196	46,138	47,085	48,038	48,996	49,960	51,462	52,971	54,487	56,011	57,543	58,466	59,402	60,351	61,314	62,291

4 Method to Determine Needs

The required community facilities in Redland Shire were derived through a combination of gap analysis and discussions with Council officers. The gap analysis involves applying the Community Facilities DSS to the demand streams (population), net of current supply. The gap analysis output was presented in full in SGS's November 2006 report and is summarised in section 5.1 of this report. The required future projects for open space facilities were based on the Parks Assessment Report, the Open Space Plan 2004-2016 and came directly from Council.

The figure below presents the methodology used to derive the required community facilities in Redland Shire.

Figure 3. Method to Determine Needs for Community Facilities



4.1 Current Provision

The current provision of Council owned community facilities and open space facilities are provided in the Appendix section (Table 10 and Table 11) and are mapped in Section 6 of this report.

4.2 Expressed Need

The benchmarking analysis outlined in the Community Facilities and Services Study, Redland Shire Council (2004), revealed that there will be greatest demand for the following community facilities in the Shire by the year 2016:

- Long Day Childcare
- Occasional Childcare
- Play Groups
- Pre-Schools
- Primary Schools
- High school
- Vacation Care
- Community Meeting Rooms
- Local Community Centres/ Neighbourhood Community Houses
- Local Youth Centres/ Youth Cottages/ Youth Houses
- Senior Citizens/ Aged Citizens Activity Centres

There will be sufficient new demand throughout the Shire for:

- 194 additional 'long day' Childcare places, and
- 194 additional Pre-School places

These services will be in most demand in the Southern Suburbs of Redland Bay and Thornlands.

This information has been supported by more recent studies such as the Capalaba Activity Centre Needs Analysis and Options Report (Redland Shire, 2007), and the Southern Suburbs Needs Assessment (UQ & Redland Shire, 2005).

4.3 Desired Standards of Service

The Desired Standard of Service (DSS) applied in this project was developed through detailed discussions between SGS and relevant council officers, and includes a review of:

- The Redland Shire Council Open Space Plan 2004 – 2016
- Urbecon, Special Edition December 2005
- SEQ Regional Plan 2005-2026: Social Infrastructure Planning, Implementation Guideline No 5.

The resulting DSS for community facilities and open space facilities for the Redland Shire is outlined in Table 4, Table 5 and Table 6 below. It will be noted that childcare facilities are expected to be provided by the private sector and therefore have not been included.

Table 4. Community Facilities Desired Standard of Service, Redland Shire (Part 1 – Initial Benchmarking of Need)

Level in Hierarchy	Community Facilities	Benchmark for Provision (1 per # population)	Responsibility	Parcel Size
Local	Community meeting room/Multi-purpose hall	1:10,000	Council	0.5ha
District	Community Centre	1:30,000	Council	1ha
	Youth Centre	1:20,000	Council/State/others	0.5ha
	Branch Library	1:35,000	Council	0.5ha
	Senior Citizen Centre	1:25,000	Council/C'wealth/others	1ha
	Disabled Respite Centre (day and overnight care)	1:50,000	Council	0.5ha
	Aged Respite Centre (day and overnight care)	1:50,000	Council/Private	0.5ha
	Art Gallery	1:50,000	Council/Private	0.5ha
	Swimming Pool	1:80,000	Council	1ha
Regional	Regional Cultural Centre	1:150,000	Council/State	2ha

Table 5. Community Facilities Desired Standard of Service, Redland Shire (Part 2 – Guiding Principles, to be used to Convert Needs into Infrastructure Provision)

When converting infrastructure needs into infrastructure provision the following guidelines will be used:

- **Maximising usage of existing facilities**

In providing new community infrastructure it is important to understand the capacities and performance of existing community facilities. Some facilities may be underutilised for a range of reasons that include poor awareness (promotion), restricted access by a controlling organisation or poor facilities management.

However, the best facility management practices cannot substitute for optimum facility location and access. A well promoted facility is unlikely to attain maximum usage if it is poorly located in the first instance.

- **Developing Flexible, Multi-Purpose Facilities**

In many cases, it is not feasible or appropriate to provide stand alone facilities for the exclusive use of specific community or socio-demographic groups. In addition to being costly, and limiting the 'life' of a facility, it can exclude access to certain funding mechanisms (such as Infrastructure Charges). Exceptions may apply to facilities specifically for young people where separate or stand alone facilities may be required to cater explicitly for their activities. Consideration should also be given to the ability and appropriateness of incorporating commercial functions, such as office space which can be leased to community organisations, government agencies or the private sector to help offset the capital and operating costs of a facility.

- **Co-locating compatible uses and creating community hubs**

Where it is in the community's best interest, community facilities should be co-located to strengthen the development of community focal points, or hubs. However, there will be some uses that are not compatible with this concept. The following issues should be considered prior to embarking on co-location:

- What are the potential mutual benefits of co-location?
- Are there similarities in purpose and shared values with the potential facilities that are considering co-locating?
- Are the facilities of a similar or complementary scale?
- Is the land available for the range of uses?
- What needs to occur to ensure that agencies cooperate? E.g. is there a 'broker' to facilitate co-location? Are the parties willing to co-locate?
- What are the legal and insurance implications of co-location?

Community hubs can also be created by locating a number of facilities in a common locality. This arrangement would be appropriate in transit oriented and inner city communities where social spaces in the public domain are limited, but play an important role in helping to bring people together and create a sense of local community identity.

- **Create facilities appropriate to the level of service demanded**

Generally, local facilities should have a 'neighbourhood' feel, provide relatively informal spaces, have safe and convenient cycle and pedestrian access, and ideally, be managed by the local community, with Local Government support or involvement as appropriate. District level facilities should be located in higher level Activity Centres, be accessible by public transport and provide a broader range of structured and semi-structured spaces for community use. District facilities may require more formal management and tenancy arrangements.

- **Optimising location of facilities**

Facility location is one of the primary determinants of function and usage. Maximum patronage will often be facilitated by integrating facilities within broader Activity Centres with compatible uses. An active, high profile location will also increase real and perceived safety for potential facility users. Location should also maximise accessibility to the facility's target market through good access to public transport (multi-nodal where possible), pedestrian and cycle access.

Facilities should be located where people can access them conveniently, including access by public transport, and ideally as part of their daily travel routine (i.e. near Activity Centres).

- **Test and Monitor the Desired Standards of Service.**

The infrastructure requirements identified by applying the appropriate DSS should be tested through community consultation to validate the needs assessment. Similarly, future forecast needs may shift with time as the result of changing demographics, community expectations or societal standards. The determination of effective community infrastructure provision is an iterative process and community needs should be monitored for changes in the level or type of demand over time.

- **Engage in partnerships with the private and public sector to deliver affordable and accessible facilities and services**

Innovation in the delivery of community facilities is needed to deliver affordable and accessible facilities. Opportunities for a range of public, and public/ private partnership should be considered. For example, development incentives and/ or agreements should be considered to encourage private sector investment in community facilities on government owned land; and relationships should be developed with the owners of significant facilities (such as tertiary education institutions) to allow general public access to underutilised facilities at certain times of the day/ week. Wherever possible, the development application process should be utilised to realise community infrastructure requirements (e.g. setbacks to buildings to ensure public realm is provided/ protected, requirement for community facilities and/ or space to host community facilities in high density development etc.)

Table 6. Open Space Desired Standard of Service, Redland Shire

	Rural (not counted in overall total)	Local	District	Regional	Overall
Ha/1000 Population	1.2 recreation	1.2 recreation 0 sport	1.2 recreation 1.2 sport	0.25 recreation 0.45 sport	2.65 recreation 1.65 sport
Total	1.2ha	1.2ha	2,4ha	0.7ha	4.3ha
Parcel Size (minimum)	2 - 10ha	0.5 - 2ha	2 - 10ha	5 - 20ha (can be lower depending, function, location & historical value)	
Catchment	2.5 - 5km	500 - 800m	2.5 - 5 Km	10 Km (nominal)	
Monitoring & Performance Targets		90 - 95% NA - NA 75 - 85%	90 - 95% 90 - 95% 90 - 95%	100% of urban households 100% of rural/non urban /SMBI 100% of all households	
Population Served	150 - 1800	150 to 1800	25,000 to 50,000	50,000 to 100,000 people	

5 Needs Assessments and Required Facilities

5.1 Community Facilities Infrastructure

As explained in Section 4 of this document, the required community facilities in Redland Shire were derived through a combination of gap analysis, application of the guiding principles and discussions with Council officers. The gap analysis involved applying the Community Facilities DSS (part 1 and 2, refer Section 4.3, Tables 4 and 5) to the demand streams (population), net of current supply.

The analysis indicated that several facilities were required within Redland Shire Council over the next 15 years (detailed in the following sub-sections). As the Infrastructure Charges Legislation states that multi-purpose facilities are least challengeable and in line with best practice standards, a meeting was held to discuss how best to apply the guiding principles outlined in Table 5 such that the needs within the Redland Community can be met. The outcomes below were considered to meet community infrastructure needs, and hence have been incorporated into the Community Infrastructure Plan and the Redland Community Purposes ICS.

Redland Bay

The analysis conducted to date indicated that the area including and surrounding Redland Bay requires the following facilities:

- A community meeting room (local);
- An art gallery;
- A branch library;
- A youth centre; and
- A senior citizens centre.

Disabled and respite centres are also required in the vicinity of this area or Victoria Point.

Through discussions it was noted that there were already some existing facilities in Redland Bay, but that there is a need for more facilities in the future. It was suggested that the facilities to be included in the Plan and the ICS were:

- A grouped facility incorporating the library/gallery/meeting space. It was suggested that 1.5ha would be required for this facility, and that the facility should be based on the Capalaba Place Model.
- A grouped facility incorporating youth, seniors and a general community centre. This facility would be a centre where physical activity could occur, and the presence of a PCYC would support this. In addition, family services and community health services should be actively promoted in the centre. The centre would require around 2ha of land.
- The respite centre to be for all ages (including aged, disability), and be provided in Victoria Point (0.5ha).

Victoria Point and Thornlands

Analyses conducted based on the DSS indicated that Victoria Point required:

- Senior citizens centre;
- Aged Care respite;
- Community Centre (district).

Thornlands required:

- Senior Citizens;
- Community Centre; and
- Youth Centre.

It was considered appropriate that many of the facilities required in these areas be combined, and that the required list of facilities included:

- Mix of community meeting centre, youth and seniors be provided. Same size as Redland Bay, but with a different emphasis. It would be more focussed on passive space, life long learning, a community hub. The services required in Victoria Point are different to the Southern Redland Bay area – more intervention services. This would be focussed in Victoria Point, but will service Thornlands as well.
- A local community hall/meeting space would be required in Thornlands.
- All ages respite centre to be located in Victoria Point.

Mt Cotton

The analysis indicated that a youth centre and a community centre was required. It was noted that these facilities should be combined and have a focus on youth and families.

Alexandra Hills and Capalaba

It was noted that the types of facilities required in these areas could serve both areas. Facilities with a focus on intergenerational services should be provided. An example would be activities where seniors mentor youths. A PCYC is already in Capalaba, therefore the active type of centre as that being proposed for Redland Bay is not required. But there is a lack of community services which contributes to a level of dysfunction. Given this, it is considered that a combined facility for youth, seniors and community be provided with an intergenerational focus.

Cleveland

It was considered important to note the seniors need. It's likely that the current halls are at capacity and could not accommodate additional demand. Donald Simpson Centre is being refurbished, so there is no need for a multipurpose facility here.

Birkdale and Wellington Point

As noted from the analysis, population growth is expected across all age groups. Crime rates are high in Birkdale, and moderate in Wellington Point. It is suggested that the facilities here are combined and will serve both suburbs, as well as the district catchment:

- 1.5 ha youth, seniors, general multipurpose centre at Wellington Point.

Also, an aged and disabled respite centre is needed in Birkdale.

A summary of these requirements is provided in Appendix 1. Also included in the Appendix are the existing facilities.

5.2 Open Space Infrastructure

The open space requirements for Redland Shire were provided to SGS by Council. These were taken from updates to the Council's Parks Assessment Report and the Open Space Plan 2004-2016.

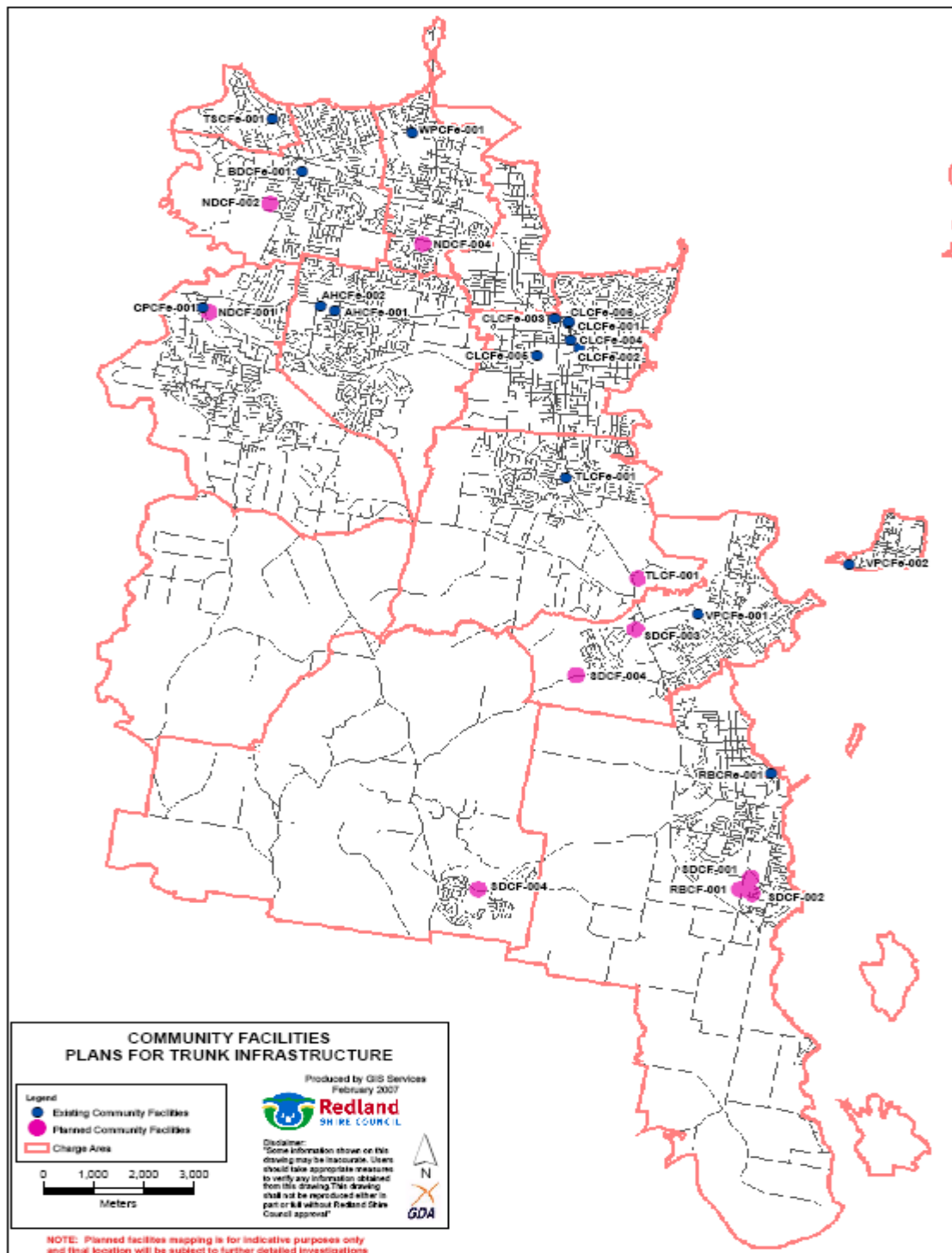
A summary of planned and existing open space, recreation and sporting requirements is provided in Appendix 1.

6 Summary of Community Infrastructure for Redland Shire

6.1 Community Facilities Infrastructure

The community facilities infrastructure proposed for Redland Shire is shown in the following map.

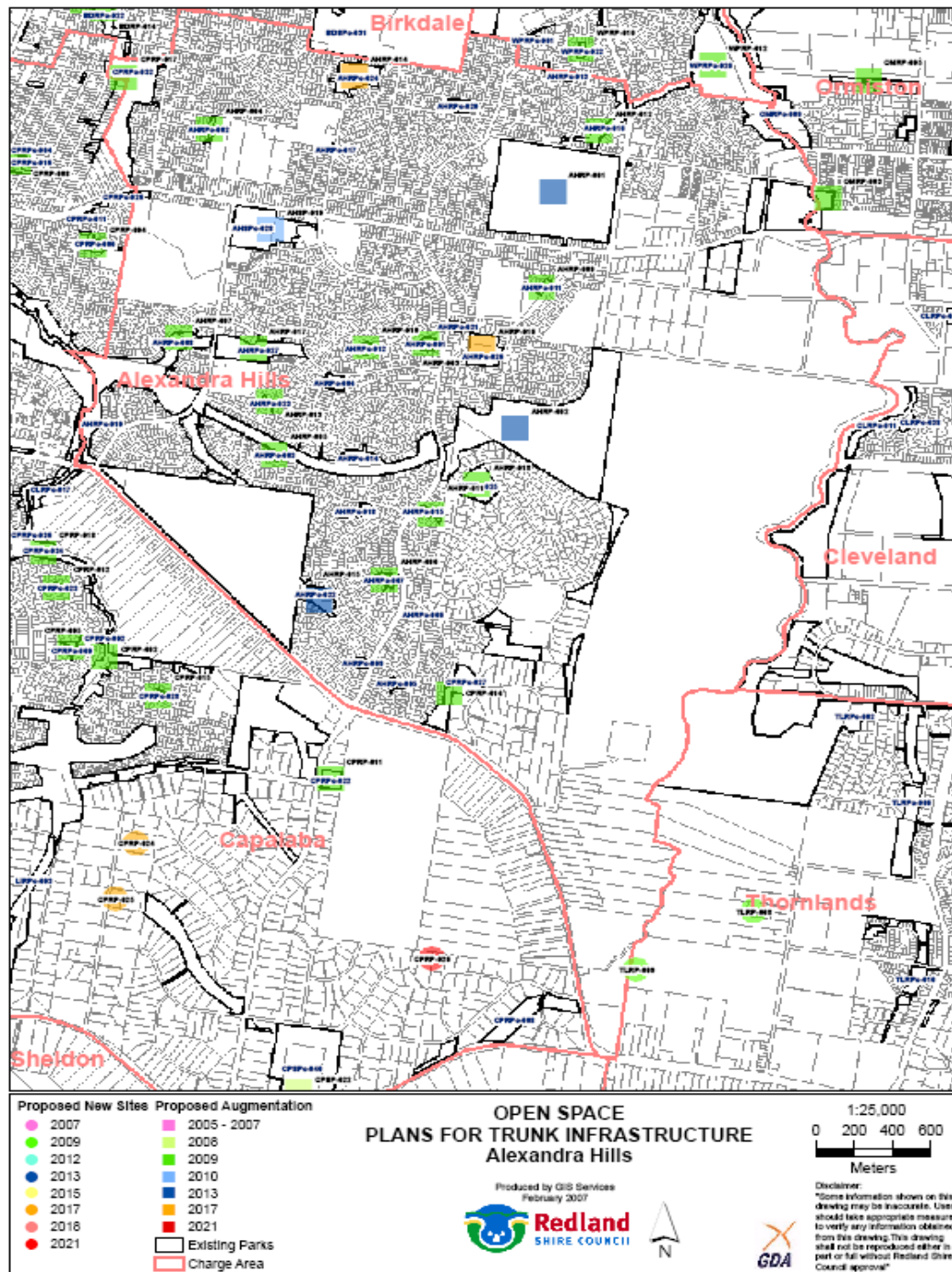
6.1.1 Existing and Planned Community Facilities



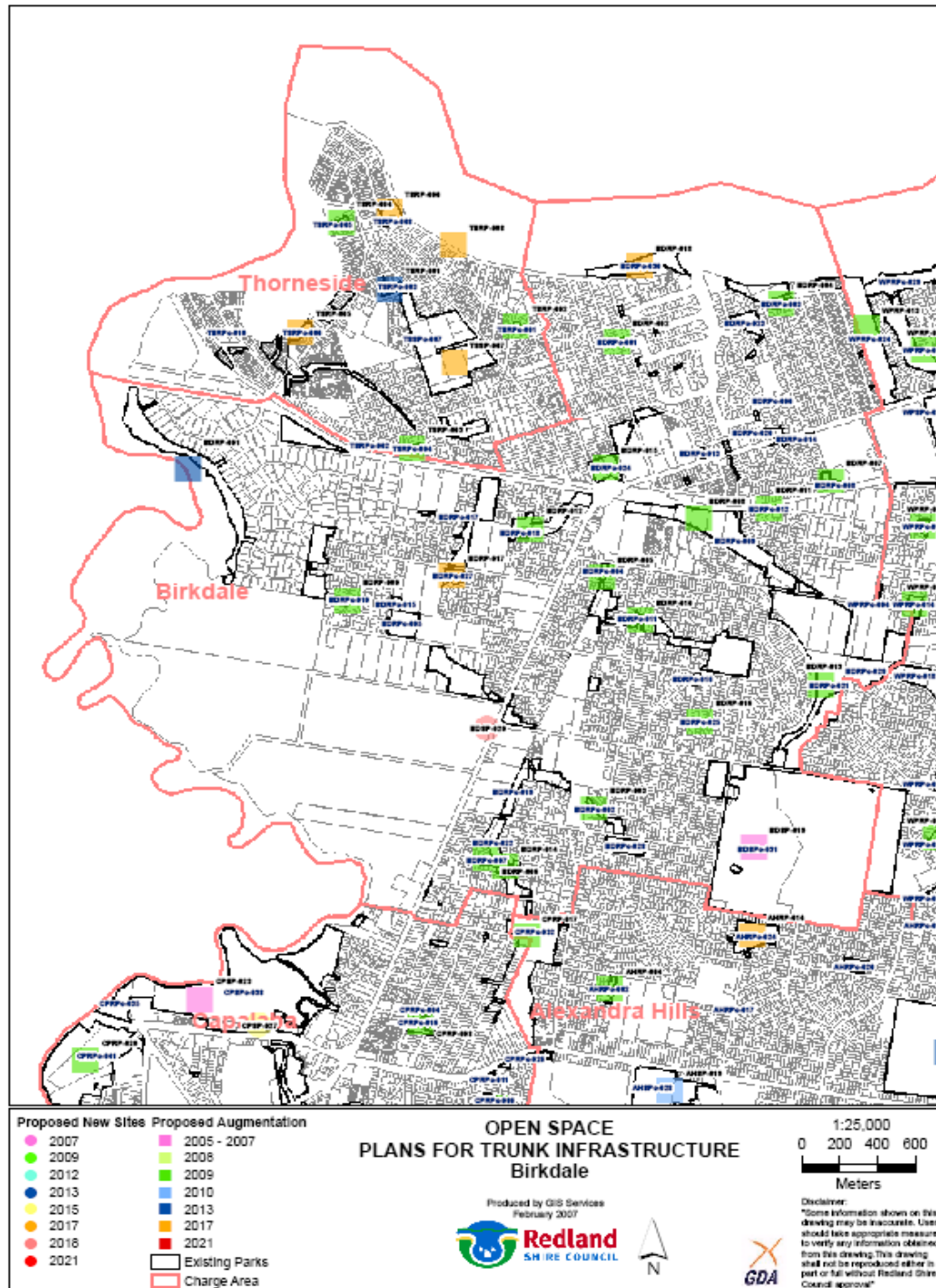
6.2 Open Space Infrastructure

The open space, recreation and sports requirements proposed for Redland Shire are shown in the following maps.

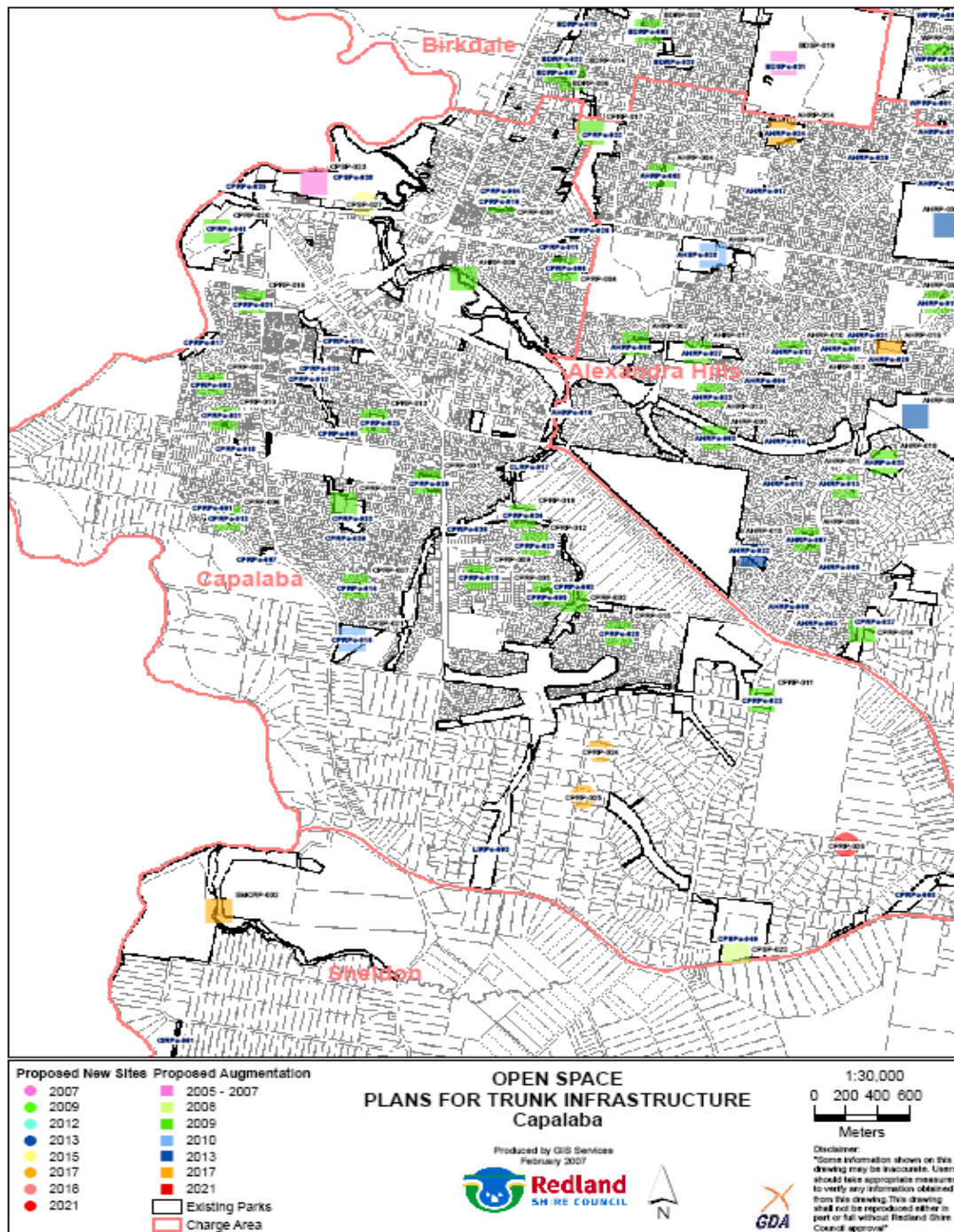
6.2.1 Existing and Planned Open Space Facilities – Alexandra Hills



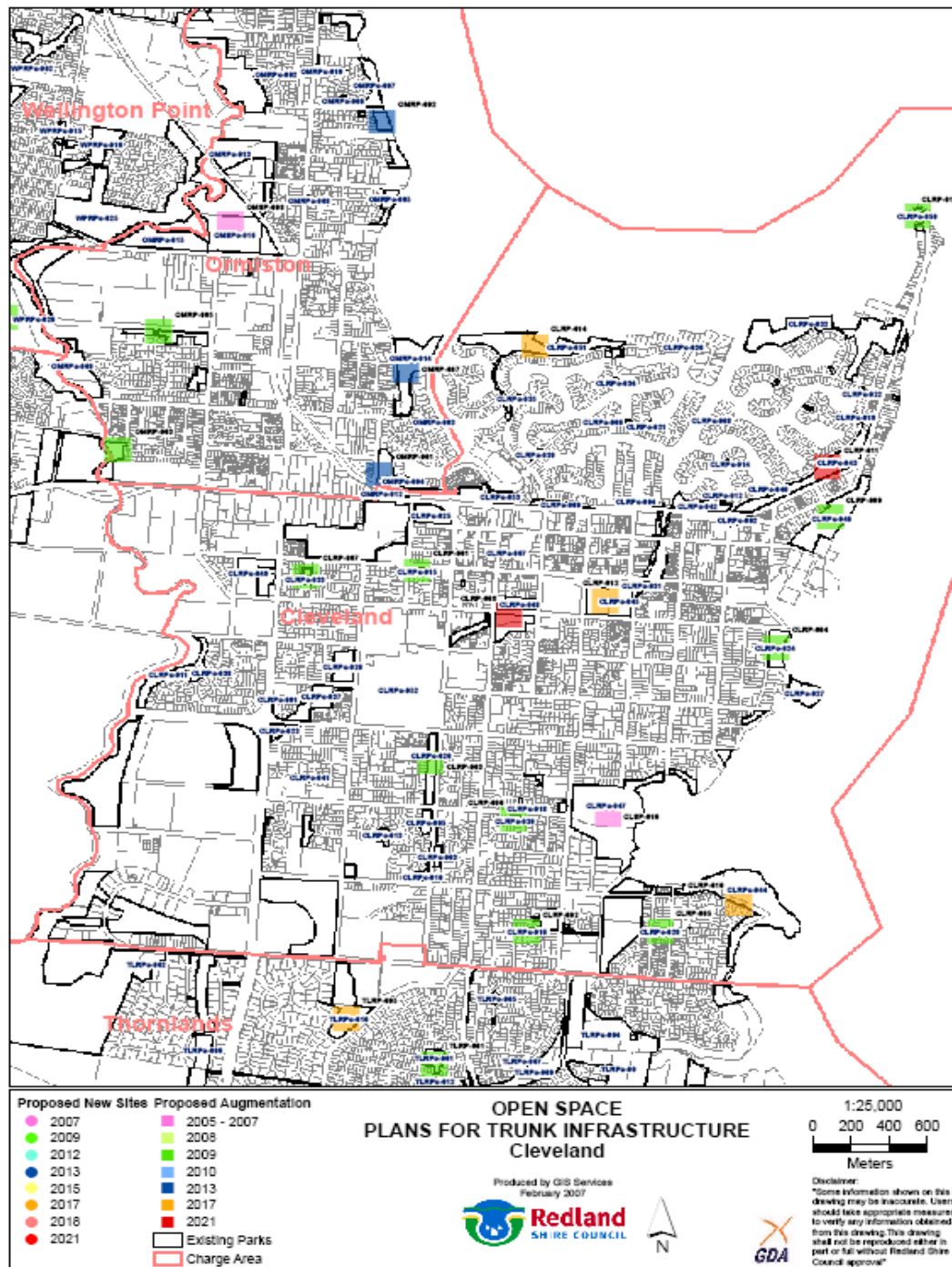
6.2.2 Existing and Planned Open Space Facilities – Birkdale



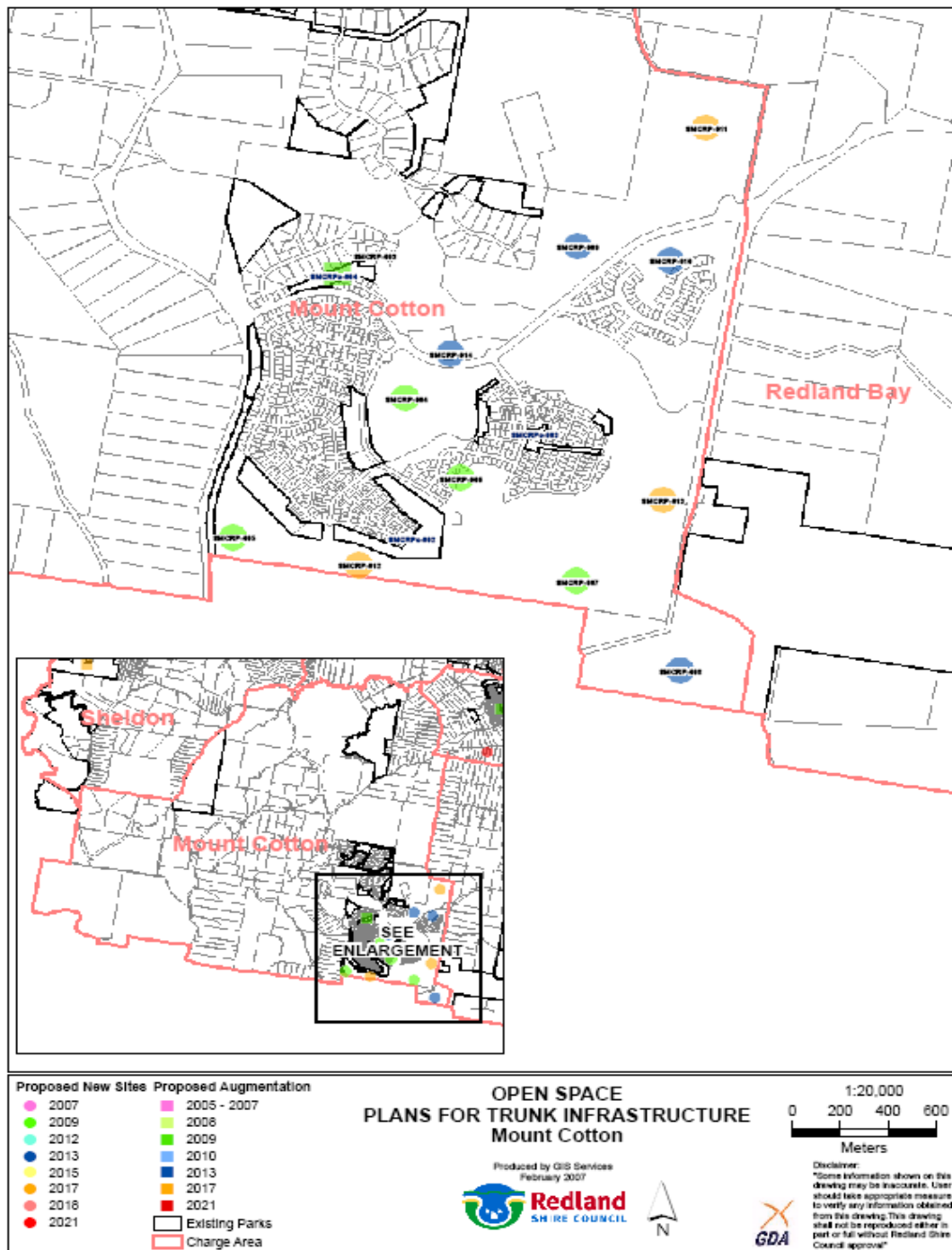
6.2.3 Existing and Planned Open Space Facilities – Capalaba



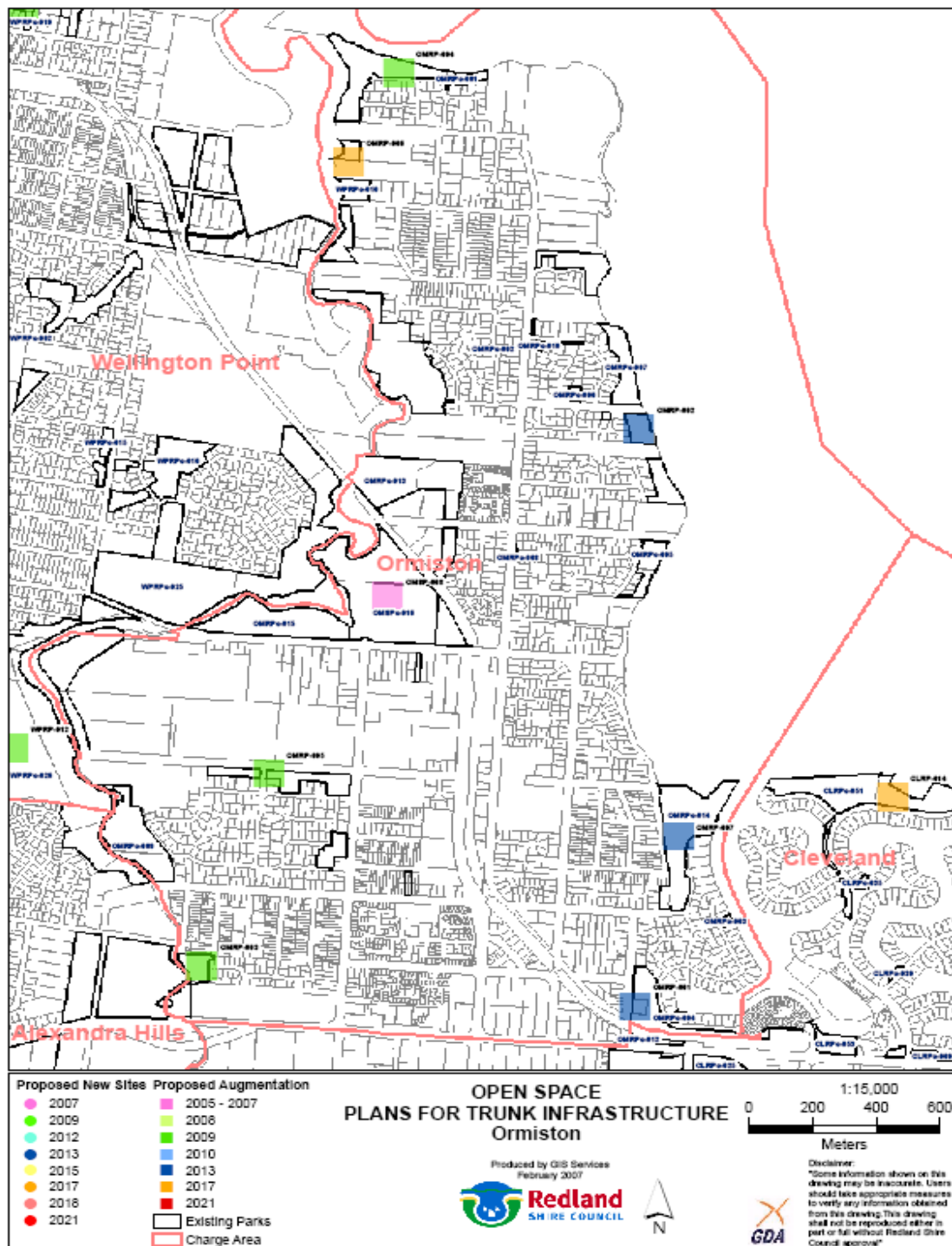
6.2.4 Existing and Planned Open Space Facilities – Cleveland



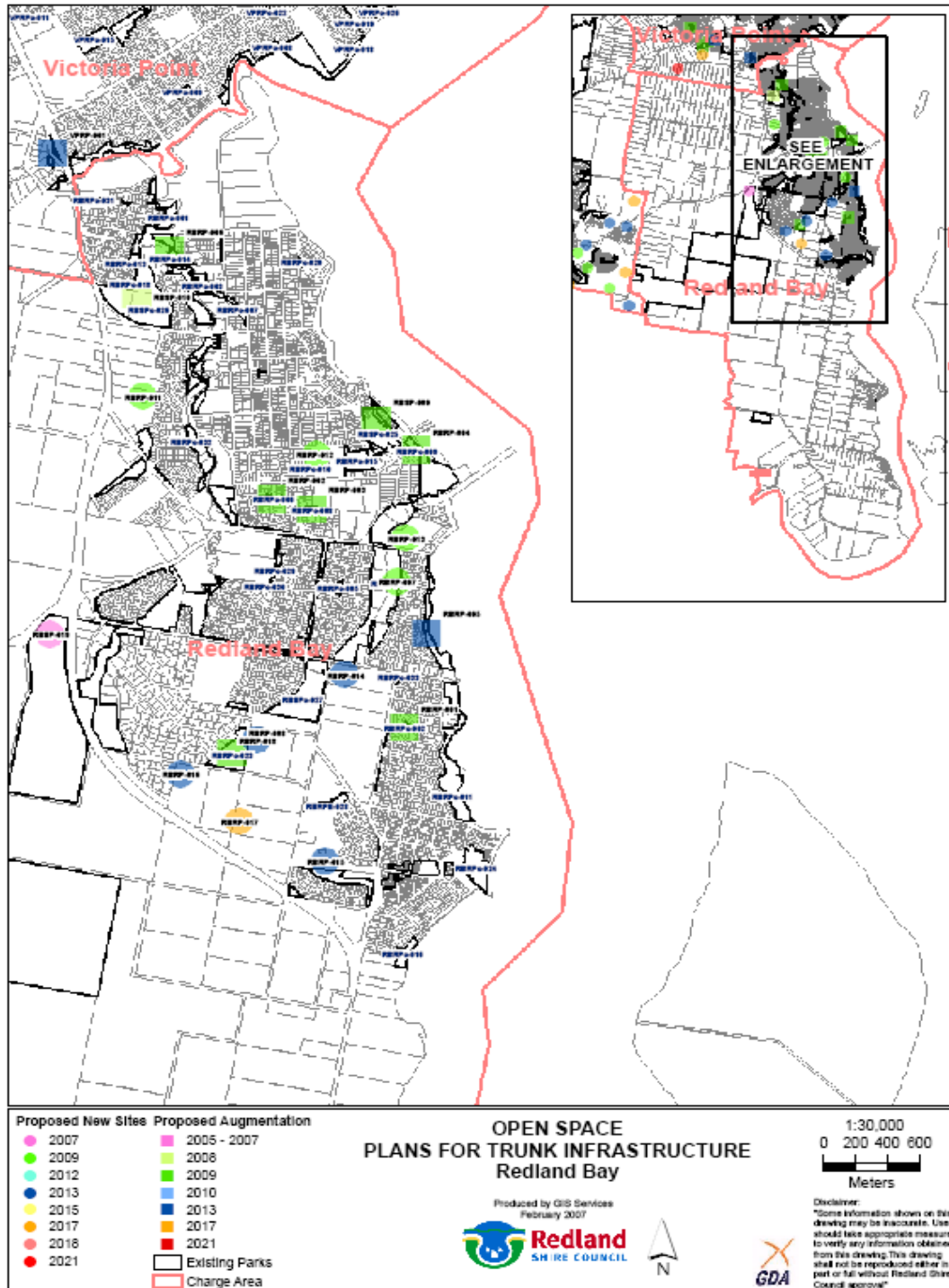
6.2.5 Existing and Planned Open Space Facilities – Mt Cotton



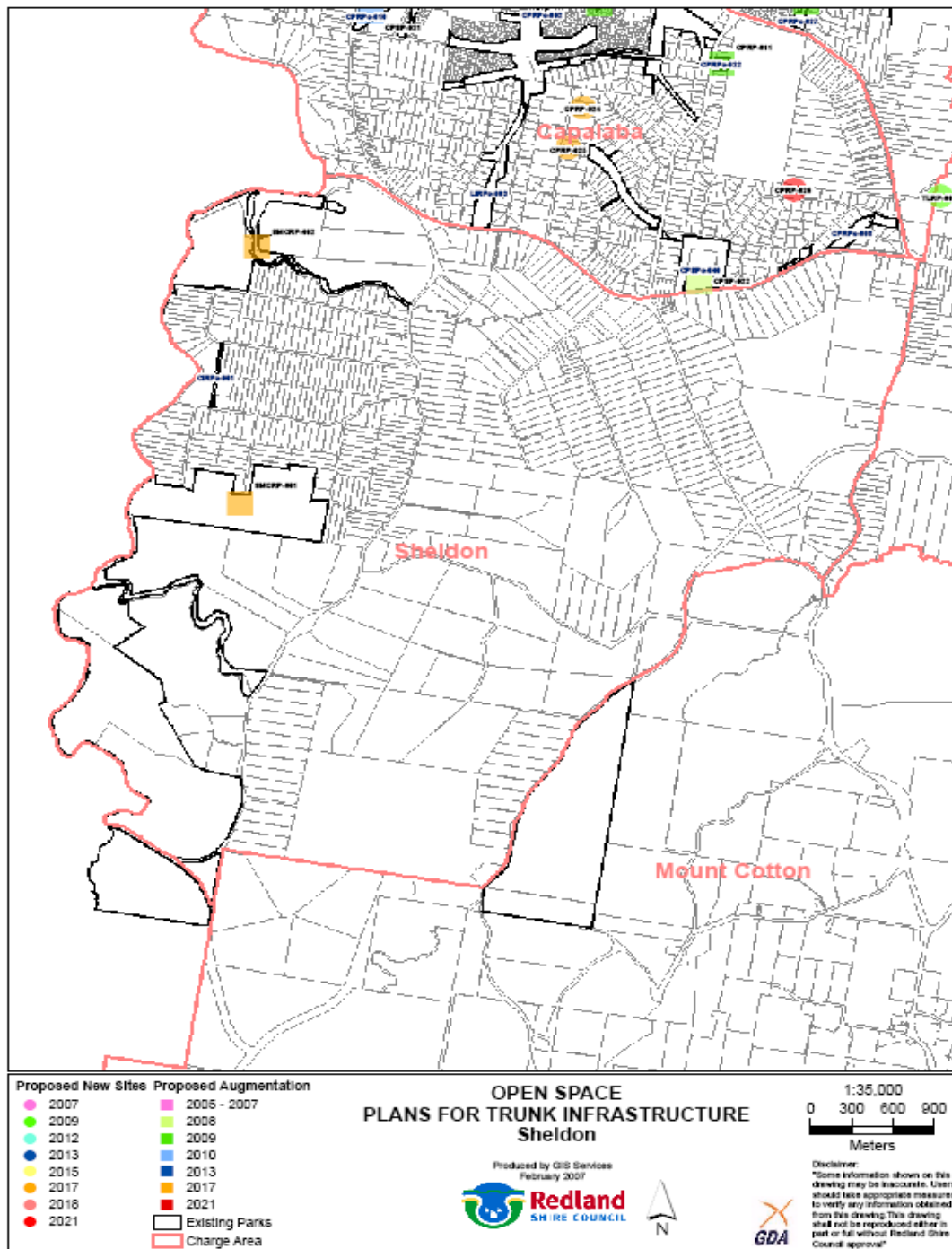
6.2.6 Existing and Planned Open Space Facilities – Ormiston



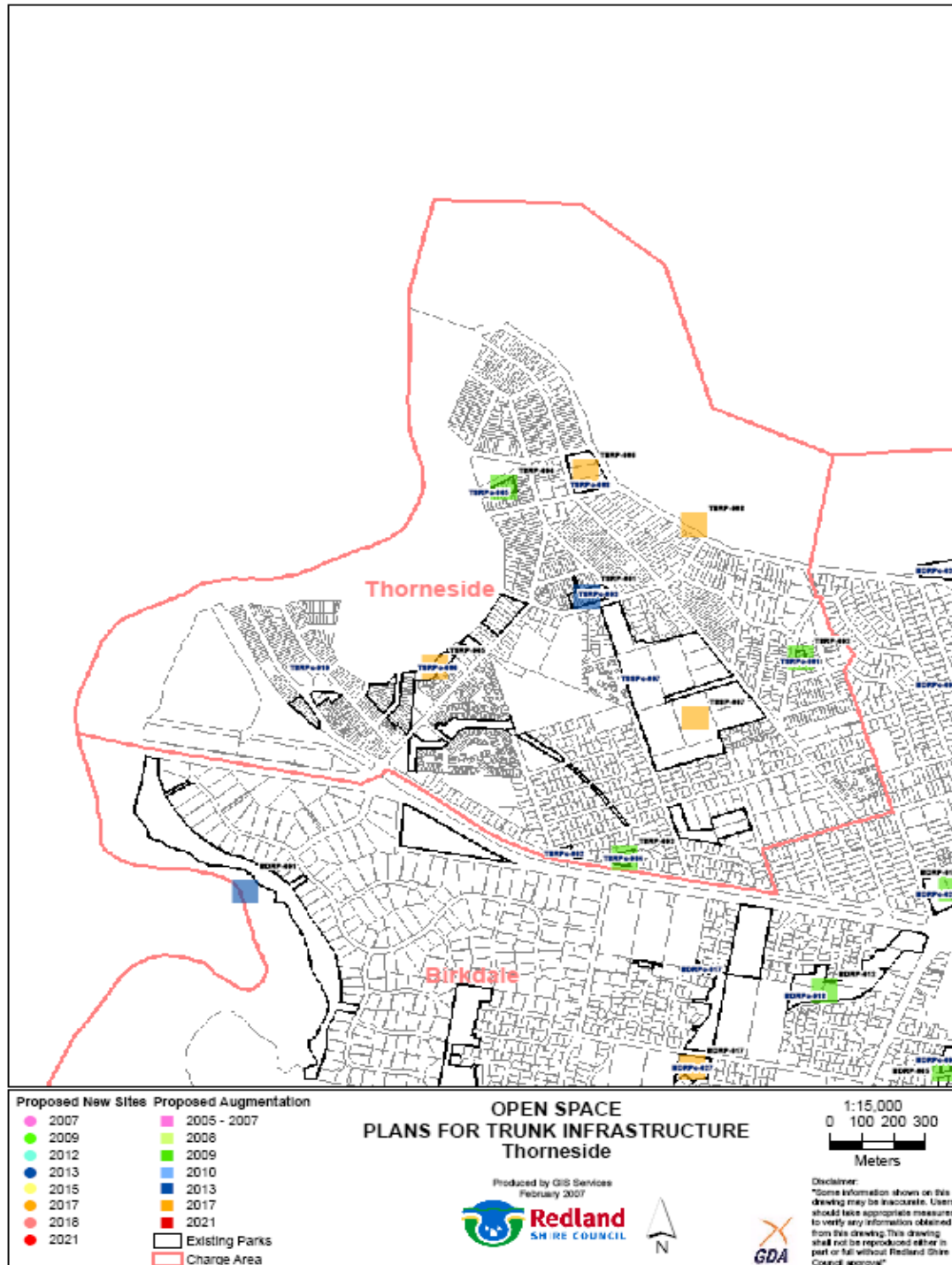
6.2.7 Existing and Planned Open Space Facilities – Redland Bay



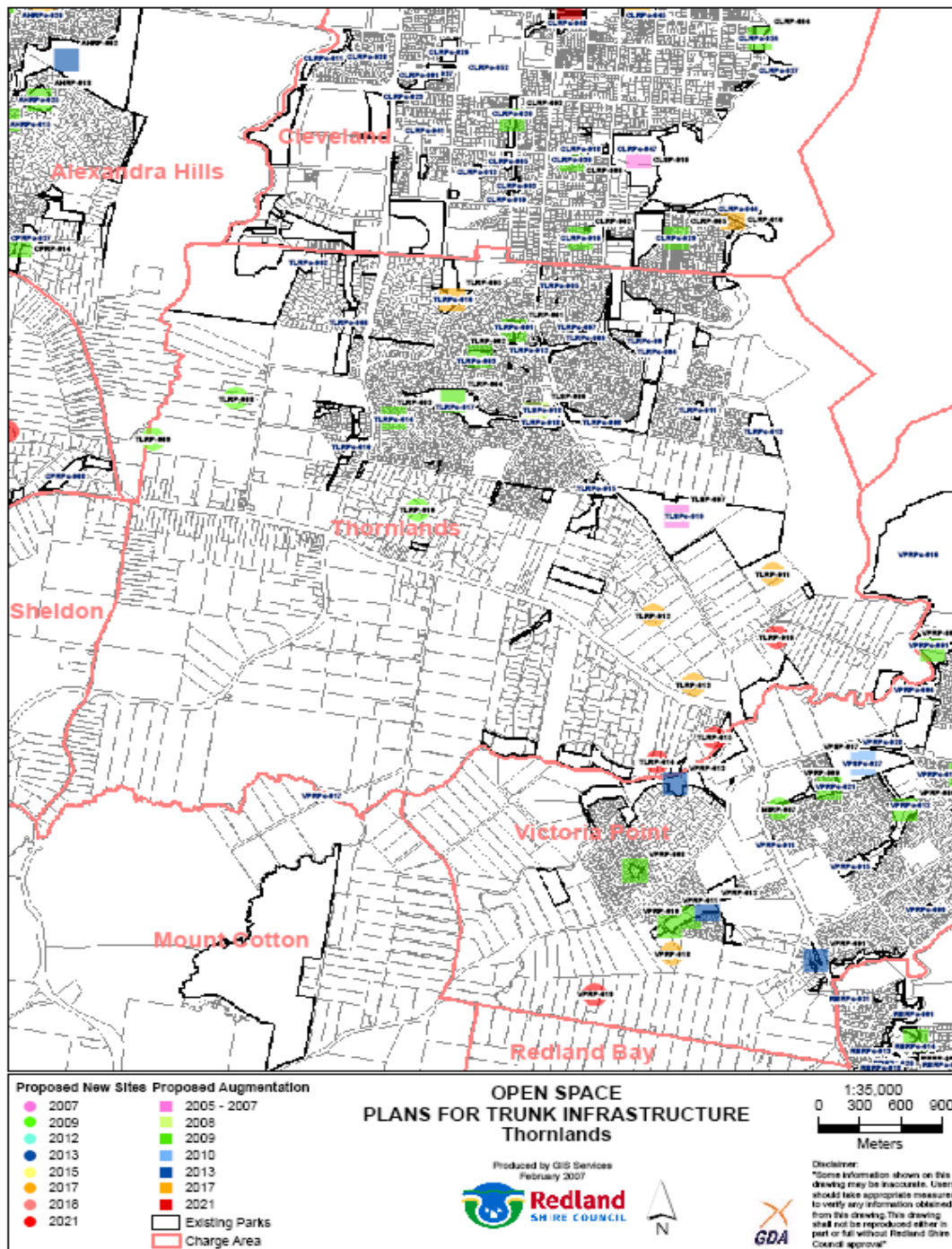
6.2.8 Existing and Planned Open Space Facilities – Sheldon



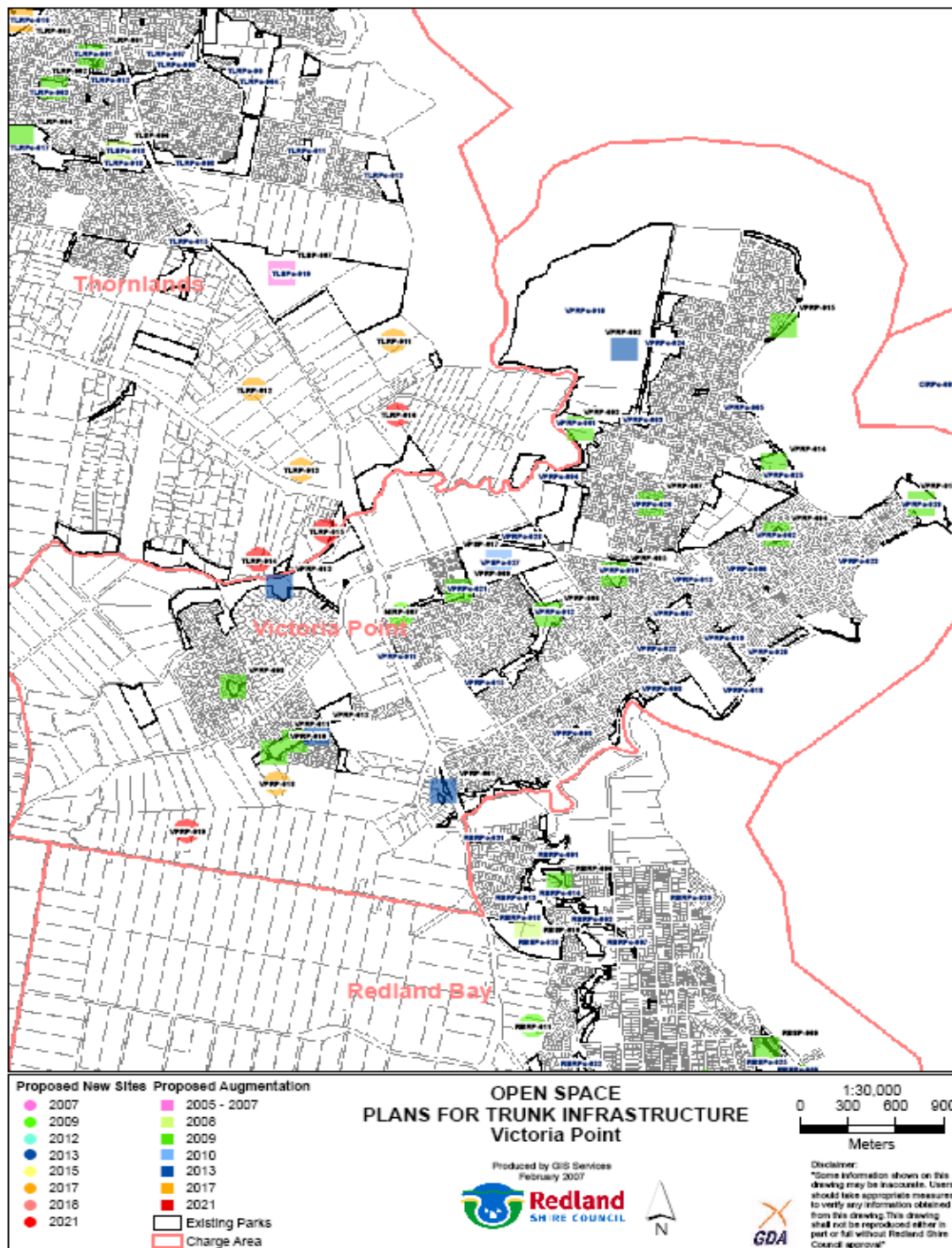
6.2.9 Existing and Planned Open Space Facilities – Thorneside



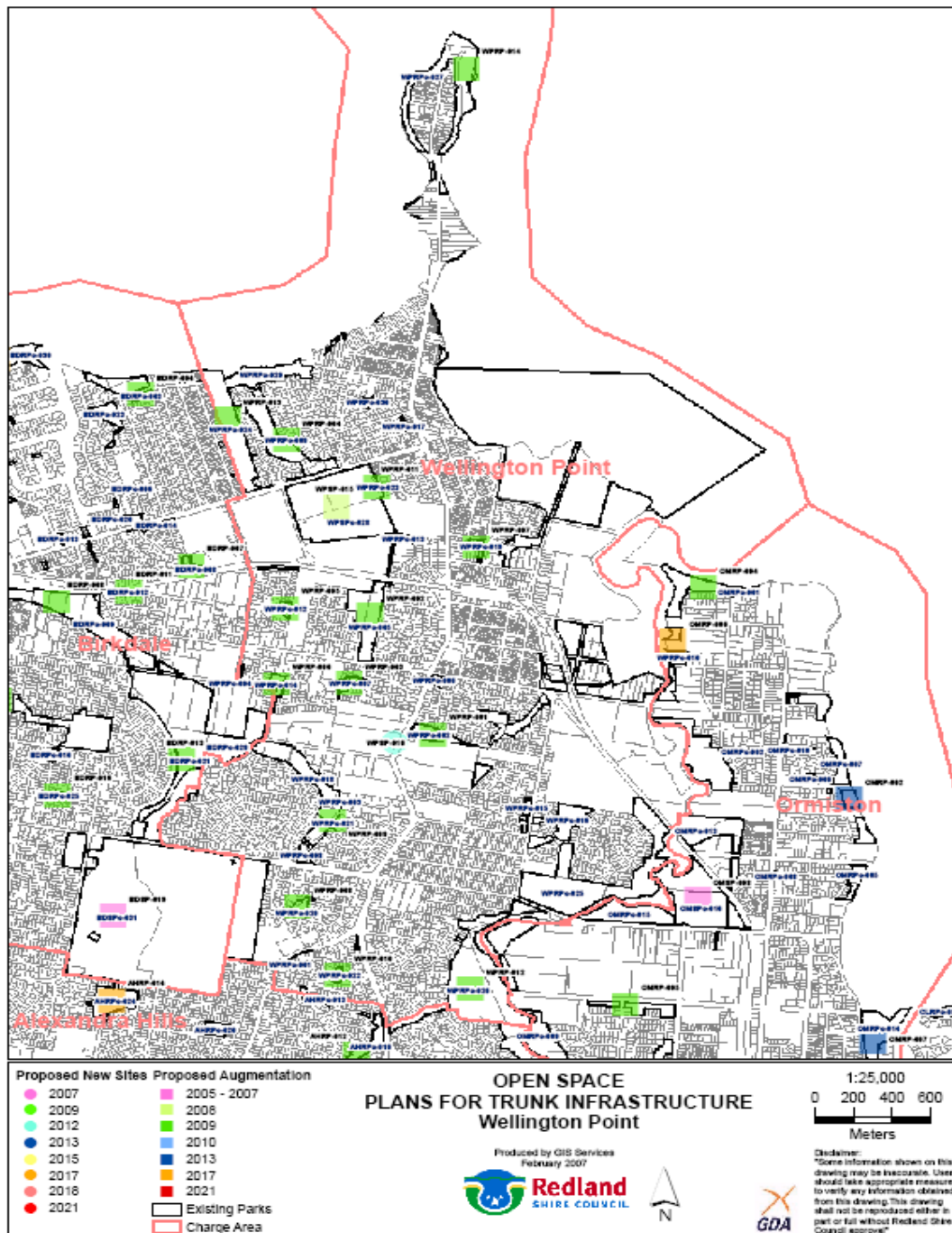
6.2.10 Existing and Planned Open Space Facilities – Thornlands



6.2.11 Existing and Planned Open Space Facilities – Victoria Point



6.2.12 Existing and Planned Open Space Facilities – Wellington Point



Appendix 1

Table 7. Existing Council Owned Community Facilities

Project Number	Community of Interest	Description	Infrastructure Type	Level in Hierarchy
Community Facilities				
AHCFE-001	Alexandra Hills	Oakland Street Child and Family Community Centre	Community Centre	Regional
AHCFE-002	Alexandra Hills	Alexandra Hills Community Hall	Community Meeting Room/Multi purpose Hall	Local
BDCFE-001	Birkdale	Birkdale School of Arts	Community Meeting Room/Multi-purpose Hall	Local
CPCFE-001	Capalaba	Capalaba Place including Art Gallery, Branch Library and Community hall	Community Meeting Room/Multi purpose Hall, branch library and Art gallery	District
CLCFE-001	Cleveland	Redland Art Gallery	Art Gallery	Regional
CLCFE-002	Cleveland	Killara Day Respite Centre Redland Shire Council	Respite Centre	
CLCFE-003	Cleveland	Redlands Community Cultural Centre	Regional Cultural Centre	Regional
CLCFE-004	Cleveland	Donald Simpson Over 50s Leisure Centre	Senior's Activity Centre	District
CLCFE-005	Cleveland	Redlands Memorial Hall	Community MeetingRoom/Multi-purpose Hall	Local
CLCFE-006	Cleveland	Cleveland Library	Branch Library	Regional
RBCFE-001	Redland Bay	Redland Bay Hall	Community Meeting Room/Multi-purpose Hall	Local
TSCFE-001	Thorneside	Thorneside Community Hall	Community Meeting Room/Multi-purpose Hall	Local
TLCFE-001	Thornlands	Thornlands Dance Palais	Community Meeting Room/Multi-purpose Hall	Local
VPCFE-001	Victoria Point	Victoria Point Community Hall	Community Meeting Room/Multi-purpose Hall	Local
VPCFE-002	Victoria Point	Coochiemudlo Public Hall	Community Meeting Room/Multi-purpose Hall	Local
WPCFE-001	Wellington Point	Wellington Point Recreation Hall	Community Meeting Room/Multi-purpose Hall	Local

Table 8. Planned Council Community Facilities

Project Number	Community of Interest	Description	Infrastructure Type	Level in Hierarchy
Community Facilities				
RBCF-001	Redland Bay	Community Meeting Room/Multi Purpose Hall	Community Meeting Room/Multi Purpose Hall	Local
TLCF-001	Thornlands	Community Meeting Room/Multi Purpose Hall	Community Meeting Room/Multi Purpose Hall	Local
NDCF-001	North District	Grouped facility incorporating youth, seniors & a general community centre (Alexandra Hills or Capalaba)	Grouped facility incorporating youth, seniors & a general community centre (Alexandra Hills or Capalaba)	District
NDCF-002	North District	Aged & Disabled Respite Centre - day & overnight care (Birkdale)	Aged & Disabled Respite Centre - day & overnight care (Birkdale)	District
NDCF-004	North District	Youth, seniors & general multi purpose centre (Wellington Point)	Youth, seniors & general multi purpose centre (Wellington Point)	District
SDCF-001	South District	Grouped facility incorporating youth, seniors & general community centre (Redland Bay)	Grouped facility incorporating youth, seniors & general community centre (Redland Bay)	District
SDCF-002	South District	Grouped facility incorporating library, art gallery & community meeting space (Redland Bay)	Grouped facility incorporating library, art gallery & community meeting space (Redland Bay)	District
SDCF-003	South District	Grouped facility incorporating youth, seniors & general community centre (Victoria Point)	Grouped facility incorporating youth, seniors & general community centre (Victoria Point)	District
SDCF-004	South District	Aged & disabled respite centre - day & overnight care (Victoria Point)	Aged & disabled respite centre - day & overnight care (Victoria Point)	District
SDCF-005	South District	Grouped facility incorporating youth & community centre (Mt Cotton)	Grouped facility incorporating youth & community centre (Mt Cotton)	District

Table 9. Existing Open Space Facilities (Recreation Parks and Sport Parks)

Project Number	Community of Interest	Description	Infrastructure Type	Level in Hierarchy
Open Space Facilities				
AHRPE-001	Alexandra Hills	Ackworth Place Park	Recreation Park	Local
AHRPE-002	Alexandra Hills	Babiana Street Park	Recreation Park	Local
AHRPE-003	Alexandra Hills	Bellini Court Park	Recreation Park	Local
AHRPE-004	Alexandra Hills	Brompton Street park	Recreation Park	Local
AHRPE-005	Alexandra Hills	Burwood Road Park	Recreation Park	Local
AHRPE-006	Alexandra Hills	Burwood Road Park 02	Recreation Park	Local
AHRPE-007	Alexandra Hills	Chipping Drive Park	Recreation Park	Local
AHRPE-008	Alexandra Hills	Crotona Road East Park	Recreation Park	Local
AHRPE-009	Alexandra Hills	Frampton Street Park	Recreation Park	Local
AHRPE-010	Alexandra Hills	Glover Drive Park	Recreation Park	Local
AHRPE-011	Alexandra Hills	Heffernan Road Park	Recreation Park	Local
AHRPE-012	Alexandra Hills	Hyde Court Park	Recreation Park	Local
AHRPE-013	Alexandra Hills	Jasper Street Park	Recreation Park	Local
AHRPE-014	Alexandra Hills	Kenton Street Park	Recreation Park	Local
AHRPE-015	Alexandra Hills	Keynsham Street Park	Recreation Park	Local
AHRPE-016	Alexandra Hills	McDonald Reserve	Recreation Park	Local
AHRPE-017	Alexandra Hills	Princeton Avenue Park	Recreation Park	Local
AHRPE-018	Alexandra Hills	Redruth Road Park	Recreation Park	Local
AHRPE-020	Alexandra Hills	Snowdon Street Park	Recreation Park	Local
AHRPE-021	Alexandra Hills	Sussex Street Park	Recreation Park	Local
AHRPE-022	Alexandra Hills	Wimborne Road Park	Recreation Park	Local
AHRPE-023	Alexandra Hills	Workington Street Park	Recreation Park	Local
AHRPE-024	Alexandra Hills	George Street Park	Recreation Park	District
AHRPE-025	Alexandra Hills	Hanover Drive Park	Recreation Park	District
AHPRE-026	Alexandra Hills	O'Gorman Street Park	Recreation Park	District
AHRPE-027	Alexandra Hills	Windemere Road Park	Recreation Park	District
AHSPE-028	Alexandra Hills	Keith Surridge Park	Sport Park	Regional
BDRPE-001	Birkdale	Agnes Street Park	Recreation Park	Local
BDRPE-002	Birkdale	Barron Reserve	Recreation Park	Local
BDRPE-003	Birkdale	Bath Street Park	Recreation Park	Local
BDRPE-004	Birkdale	Carinyan Reserve	Recreation Park	Local
BDRPE-005	Birkdale	Creek Road Park	Recreation Park	Local
BDRPE-006	Birkdale	Galley Way Park	Recreation Park	Local
BDRPE-007	Birkdale	Goodge Court Park	Recreation Park	Local
BDRPE-008	Birkdale	Juanita Street Park	Recreation Park	Local

Project Number	Community of Interest	Description	Infrastructure Type	Level in Hierarchy
BDRPE-009	Birkdale	Lachlan Street Park	Recreation Park	Local
BDRPE-010	Birkdale	Leicester Street Park	Recreation Park	Local
BDRPE-011	Birkdale	Lobelia Street Park	Recreation Park	Local
BDRPE-012	Birkdale	MacFarlane Street Park	Recreation Park	Local
BDRPE-013	Birkdale	Mary Pleasant Drive Park	Recreation Park	Local
BDRPE-014	Birkdale	Birkdale Road Reserve	Recreation Park	Local
BDRPE-015	Birkdale	Mecoil Court Park	Recreation Park	Local
BDRPE-016	Birkdale	Parakeet Street Park	Recreation Park	Local
BDRPE-017	Birkdale	Pedwell Place Park	Recreation Park	Local
BDRPE-018	Birkdale	Pistachio Court Park	Recreation Park	Local
BDRPE-019	Birkdale	Robinson Park	Recreation Park	Local
BDRPE-020	Birkdale	Galley Way Park	Recreation Park	Local
BDRPE-021	Birkdale	Sunnybay Drive Park	Recreation Park	Local
BDRPE-022	Birkdale	Surman Street Park	Recreation Park	Local
BDRPE-023	Birkdale	William Eickenloff Park	Recreation Park	Local
BDRPE-024	Birkdale	William Taylor Memorial Park	Recreation Park	Local
BDRPE-025	Birkdale	Wren Court Park	Recreation Park	Local
BDRPE-027	Birkdale	Byng Road Park	Recreation Park	District
BDRPE-028	Birkdale	Bailey Road Park	Recreation Park	District
BDRPE-029	Birkdale	Tulloch Drive Park	Recreation Park	Local
BDRPE-030	Birkdale	Aquatic Paradise Park West	Recreation Park	Regional
BDSPE-031	Birkdale	Judy Holt Recreation Reserve	Sport Park	Regional
CPRPE-001	Capalaba	Bandicoot Court Park	Recreation Park	Local
CPRPE-002	Capalaba	Barber Drive Park	Recreation Park	Local
CPRPE-003	Capalaba	Blarney Street Park	Recreation Park	Local
CPRPE-004	Capalaba	Bowen Street Park	Recreation Park	Local
CPRPR-005	Capalaba	Capalaba Main Drain	Recreation Park	Local
CPRPE-006	Capalaba	Chantelle Court Park	Recreation Park	Local
CPRPE-007	Capalaba	Chatsworth Circuit Urban Habitat	Recreation Park	Local
CPRPE-008	Capalaba	Cottonwood Court Drainage Reserve	Recreation Park	Local
CPRPE-009	Capalaba	Crighton Court Park	Recreation Park	Local
CPRPE-011	Capalaba	Elmhurst Street Park	Recreation Park	Local
CPRPE-013	Capalaba	Howletts Road Park	Recreation Park	Local
CPRPE-014	Capalaba	Jacaranda Road Park	Recreation Park	Local
CPRPE-015	Capalaba	Jupiter Street Park	Recreation Park	Local

Project Number	Community of Interest	Description	Infrastructure Type	Level in Hierarchy
CPRPE-016	Capalaba	Keith Street Bushland Refuge	Recreation Park	Local
CPRPE-017	Capalaba	Killarney Crescent Park	Recreation Park	Local
CPRPE-018	Capalaba	Kingfisher Place Creek Corridor	Recreation Park	Local
CPRPE-019	Capalaba	Krimmer Place Park	Recreation Park	Local
CPRPE-020	Capalaba	Lawlor Reserve	Recreation Park	Local
CPRPE-021	Capalaba	Little Killarney Park	Recreation Park	Local
CPRPE-022	Capalaba	Lyndon Road Park	Recreation Park	Local
CPRPE-023	Capalaba	McTaggart Street Park	Recreation Park	Local
CPRPE-025	Capalaba	Nangando Street Park	Recreation Park	Local
CPRPE-026	Capalaba	Richard Court Park	Recreation Park	Local
CPRPE-027	Capalaba	Sevenoaks Street Park	Recreation Park	Local
CPRPE-028	Capalaba	Spirit Drive Park	Recreation Park	Local
CPRPE-029	Capalaba	Tauris Road Park	Recreation Park	Local
CPRPE-031	Capalaba	Winter Memorial Park	Recreation Park	Local
CPRPE-032	Capalaba	Valentine Park	Recreation Park	District
CPRPE-033	Capalaba	Wentworth Drive Park	Recreation Park	District
CPRPE-034	Capalaba	Brosnan Drive Park	Recreation Park	District
CPRPE-035	Capalaba	John Frederick Park	Recreation Park	District
CPRPE-036	Capalaba	Silvara Circuit Park	Recreation Park	District
CPSPE-038	Capalaba	Sam Sciacca Sports Fields	Sport Park	District
CPSPE-040	Capalaba	Redlands Baseball Park	Sport Park	Regional
CPRPE-041	Capalaba	Capalaba Regional Park	Recreation Park	Regional
CLRPE-001	Cleveland	Adam Street Park	Recreation Park	Local
CLRPE-002	Cleveland	Anzac Park	Recreation Park	Local
CLRPE-003	Cleveland	Arlington Street Park	Recreation Park	Local
CLRPE-004	Cleveland	Bass Canal Park	Recreation Park	Local
CLRPE-005	Cleveland	Bay Street Park	Recreation Park	Local
CLRPE-006	Cleveland	Bligh Canal Park	Recreation Park	Local
CLRPE-007	Cleveland	Bloomfield Street Park	Recreation Park	Local
CLRPE-008	Cleveland	Bonaventure Court Park	Recreation Park	Local
CLRPE-009	Cleveland	Bowsprit Parade Park	Recreation Park	Local
CLRPE-010	Cleveland	Capricorn Drive Park	Recreation Park	Local
CLRPE-011	Cleveland	Coburg West Link	Recreation Park	Local
CLRPE-012	Cleveland	Cortes Canal Park	Recreation Park	Local
CLRPE-013	Cleveland	Dunwich Street Park	Recreation Park	Local
CLRPE-014	Cleveland	Genoa Court Park	Recreation Park	Local

Project Number	Community of Interest	Description	Infrastructure Type	Level in Hierarchy
CLRPE-015	Cleveland	Haggup Street Park	Recreation Park	Local
CLRPE-016	Cleveland	Janlaw Street Park	Recreation Park	Local
CLRPE-017	Cleveland	Jon Street Creek Corridor	Recreation Park	Local
CLRPE-018	Cleveland	Karen Street Park	Recreation Park	Local
CLRPE-019	Cleveland	Le Maire Canal Park	Recreation Park	Local
CLRPE-020	Cleveland	Long Street Park	Recreation Park	Local
CLRPE-021	Cleveland	Magellan Canal Park	Recreation Park	Local
CLRPE-022	Cleveland	Marram Court Walkway	Recreation Park	Local
CLRPE-023	Cleveland	Mergowie Drive Park	Recreation Park	Local
CLRPE-024	Cleveland	Nandeebie Park	Recreation Park	Local
CLRPE-025	Cleveland	Norfolk Park	Recreation Park	Local
CLRPE-026	Cleveland	Norm Dean Park	Recreation Park	Local
CLRPE-027	Cleveland	Oyster Point Park	Recreation Park	Local
CLRPE-029	Cleveland	Peel Street Park Road Reserve	Recreation Park	Local
CLRPE-030	Cleveland	Phillip Street Park	Recreation Park	Local
CLRPE-031	Cleveland	Ross Creek Corridor	Recreation Park	Local
CLRPE-032	Cleveland	Raby Bay Boulevard Park	Recreation Park	Local
CLRPE-033	Cleveland	Scott Street Park	Recreation Park	Local
CLRPE-034	Cleveland	Seacrest Court Park	Recreation Park	Local
CLRPE-035	Cleveland	Seahaven Court Park	Recreation Park	Local
CLRPE-036	Cleveland	Sentinel Court Park	Recreation Park	Local
CLRPE-037	Cleveland	Ross Creek Corridor Smith Street	Recreation Park	Local
CLRPE-038	Cleveland	Sunshine Drive Park	Recreation Park	Local
CLRPE-039	Cleveland	Tasman Canal Park	Recreation Park	Local
CLRPE-040	Cleveland	Torres Canal Park	Recreation Park	Local
CLRPE-041	Cleveland	Vassi Concord Park	Recreation Park	Local
CLRPE-042	Cleveland	Kinsail Court Park	Recreation Park	Local
CLRPE-043	Cleveland	Linear Park Rotary Park	Recreation Park	District
CLRPE-044	Cleveland	Goleby Esplanade Foreshore	Recreation Park	District
CLRPE-045	Cleveland		Recreation Park	District
CLRPE-046	Cleveland	G J Walter Park	Recreation Park	District
CLRPE-047	Cleveland	Henry Ziegenfusz Park	Sport Park	District
CLRPE-048	Cleveland	Donald Simpson Park	Recreation Park	District
CLRPE-049	Cleveland	Wellington Street Park - Aquatic Centre	Sport Park	District
CLRPE-050	Cleveland	Cleveland Point Recreation Reserve	Recreation Park	Regional

Project Number	Community of Interest	Description	Infrastructure Type	Level in Hierarchy
CLRPE-051	Cleveland	Raby Bay Foreshore Park	Recreation Park	Regional
CLRPE-052	Cleveland	Cleveland Showgrounds	Sport Park	Regional
CLRPE-053	Cleveland	Raby Bay Harbour Park	Recreation Park	District
OMRPE-001	Ormiston	Hilliards Creek Corridor Stevens Place	Recreation Park	Local
OMRPE-002	Ormiston	Bee Street Road Reserve	Recreation Park	Local
OMRPE-003	Ormiston	Cayman Crescent Park	Recreation Park	Local
OMRPE-004	Ormiston	Columbus Canal Park	Recreation Park	Local
OMRPE-005	Ormiston	Counihan Street Park	Recreation Park	Local
OMRPE-006	Ormiston	Gray Park	Recreation Park	Local
OMRPE-007	Ormiston	Empire Point Foreshore	Recreation Park	Local
OMRPE-008	Ormiston	Fig Tree Park	Recreation Park	Local
OMRPE-009	Ormiston	Hilliards Creek Corridor - Francis Street	Recreation Park	Local
OMRPE-010	Ormiston	Ivory Lane Urban Habitat	Recreation Park	Local
OMRPE-012	Ormiston	Merv Genrich Park	Recreation Park	Local
OMRPE-013	Ormiston	Beckwith Street Wetlands	Recreation Park	Local
OMRPE-014	Ormiston	Raby Esplanade Park	Recreation Park	District
OMRPE-015	Ormiston	Fellmonger Park	Recreation Park	District
OMRPE-016	Ormiston	Redlands Softball Park	Sport Park	Regional
RBRPE-001	Redland Bay	Moogurrapum Creek Corridor - Anita Street	Recreation Park	Local
RBRPE-002	Redland Bay	Baylink Drive Park	Recreation Park	Local
RBRPE-003	Redland Bay	Moogurrapum Creek Corridor - Buckler Court	Recreation Park	Local
RBRPE-005	Redland Bay	Irwin Place Park	Recreation Park	Local
RBRPE-006	Redland Bay	Lanyard Place Park	Recreation Park	Local
RBRPE-007	Redland Bay	Mill Street Drainage Reserve	Recreation Park	Local
RBRPE-008	Redland Bay	Moreton View Park	Recreation Park	Local
RBRPE-009	Redland Bay	Nev Stafford Park	Recreation Park	Local
RBRPE-010	Redland Bay	Newlands Street Park	Recreation Park	Local
RBRPE-011	Redland Bay	Orchard Beach Foreshore (South)	Recreation Park	Local
RBRPE-012	Redland Bay	Fielding Park	Recreation Park	District
RBRPE-013	Redland Bay	Penrose Avenue Park	Recreation Park	Local
RBRPE-014	Redland Bay	Pinelands Circuit Park	Recreation Park	Local
RBRPE-015	Redland Bay	Pitt Street Wetland	Recreation Park	Local
RBRPE-016	Redland Bay	Sandy Cove Foreshore	Recreation Park	Local
RBRPE-018	Redland Bay	Terrier Court Park	Recreation Park	Local

Project Number	Community of Interest	Description	Infrastructure Type	Level in Hierarchy
RBRPE-020	Redland Bay	Wes Armstrong Park	Recreation Park	Local
RBRPE-023	Redland Bay	Grevillea Street Park	Recreation Park	District
RBRPE-024	Redland Bay	McWilliam Street Park/Junee Street Park	Recreation Park	District
RBSPE-025	Redland Bay	Sel Outridge Park	Sport Park	District
RBSPE-026	Redland Bay	Charlie Buckler Sportsfield	Sport Park	District
RBSPE-027	Redland Bay	School of Arts Rd Sportsfield	Sport Park	District
RBRPE-028	Redland Bay	Collins Street Park	Recreation Park	Local
RBRPE-029	Redland Bay	Jack Gordon Park	Recreation Park	Local
RBRPE-030	Redland Bay	Bedarra Street Park	Recreation Park	Local
RBRPE-031	Redland Bay	Jay Crescent Wetland	Recreation Park	Local
RBSPE-032	Redland Bay	Moogurrapum Creek Corridor Parklink Drive	Recreation Park	Local
RBRPE-033	Redland Bay	Weinam Creek Corridor Collins Park	Recreation Park	Local
SMCRPE-002	Sheldon - Mt Cotton	Lilly Pilly Street Park	Recreation Park	Local
SMCRPE-003	Sheldon - Mt Cotton	Seeana Drive Park	Recreation Park	Local
SMCRPE-004	Sheldon - Mt Cotton	Valley Road Reserve	Recreation Park	Local
TSRPE-001	Thorneside	Alma Street Park	Recreation Park	Local
TSRPE-003	Thorneside	Fisher Road Park	Recreation Park	Local
TSRPE-004	Thorneside	Gradi Court Park	Recreation Park	Local
TSRPE-005	Thorneside	Willard Weber Reserve	Recreation Park	Local
TSSPE-007	Thorneside	William Taylor memorial Sportsfield	Sport Park	District
TSRPE-008	Thorneside	Beth Boyd Park	Recreation Park	Regional
TSRPE-009	Thorneside	Queens Esplanade Foreshore	Recreation Park	Regional
TLRPE-001	Thornlands	Abbotsleigh Street Park	Recreation Park	Local
TLRPE-003	Thornlands	Anniversary Park	Recreation Park	Local
TLRPE-005	Thornlands	Jewel Place Park	Recreation Park	Local
TLRPE-006	Thornlands	Lorikeet Drive Nature Corridor	Recreation Park	Local
TLRPE-007	Thornlands	Portias Place Park	Recreation Park	Local
TLRPE-008	Thornlands	Primrose Drive Wetland	Recreation Park	Local
TLRPE-009	Thornlands	Clifford Perske Drive Nature Corridor	Recreation Park	Local
TLRPE-010	Thornlands	Rushwood Creek Corridor	Recreation Park	Local
TLRPE-012	Thornlands	Sylvie Street Park	Recreation Park	Local
TLRPE-013	Thornlands	Tindappah Drive Foreshore	Recreation Park	Local
TLRPE-014	Thornlands	Tokay Court Park	Recreation Park	Local
TLRPE-015	Thornlands	Tuna Court Park	Recreation Park	Local

Project Number	Community of Interest	Description	Infrastructure Type	Level in Hierarchy
TLRPE-016	Thornlands	Robert Mackie Park	Recreation Park	District
TLRPE-017	Thornlands	Crystal Waters Park	Recreation Park	District
TLSPE-018	Thornlands	William Stewart Park	Sport Park	District
TLSPE-019	Thornlands	Pinklands Sporting Complex	Sport Park	Regional
VPRPe-001	Victoria Point	Eprapah Creek Corridor - Aspect Drive	Recreation Park	Local
VPRPe-002	Victoria Point	Bassil Parade Park	Recreation Park	Local
VPRPe-003	Victoria Point	Bill Scudamore-Smith Park	Recreation Park	Local
VPRPe-004	Victoria Point	Cameron Court Park	Recreation Park	Local
VPRPe-005	Victoria Point	Cupania Street Park	Recreation Park	Local
VPRPe-006	Victoria Point	Daysland Street Park	Recreation Park	Local
VPRPe-007	Victoria Point	Duncan Jenkins Eucalypt Park	Recreation Park	Local
VPRPe-008	Victoria Point	Glen Road Park	Recreation Park	Local
VPRPe-009	Victoria Point	Holly Road Urban Habitat	Recreation Park	Local
VPRPe-010	Victoria Point	Jeanne Drive Park	Recreation Park	Local
VPRPe-011	Victoria Point	Magnolia Road Reserve	Recreation Park	Local
VPRPe-012	Victoria Point	Parklands Court Park	Recreation Park	Local
VPRPe-013	Victoria Point	Peggy Place Park	Recreation Park	Local
VPRPe-015	Victoria Point	Poinciana Avenue Park	Recreation Park	Local
VPRPe-016	Victoria Point	Point Halloran Conservation Area	Recreation Park	Local
VPRPe-018	Victoria Point	Salford Waters Park	Recreation Park	Local
VPRPe-019	Victoria Point	Simon Street Reserve	Recreation Park	Local
VPRPe-020	Victoria Point	Stacey Court Park	Recreation Park	Local
VPRPe-021	Victoria Point	Sycamore Parade Park	Recreation Park	Local
VPRPe-022	Victoria Point	Weber Court Reserve	Recreation Park	Local
VPRPe-023	Victoria Point	Wilson Street Waterfront Reserves	Recreation Park	Local
VPRPe-024	Victoria Point	Orana Street Park	Recreation Park	District
VPRPe-025	Victoria Point	Les Moore Park	Recreation Park	District
VPRPe-026	Victoria Point	W H Yeo Park	Recreation Park	District
VPSPe-027	Victoria Point	Ern Dowling Sportsfield	Sport Park	Regional
VPRPe-028	Victoria Point	Cascades Gardens	Recreation Park	Regional
VPRPe-029	Victoria Point	Victoria Point Recreation Reserve	Recreation Park	Regional
WPRPe-001	Wellington Point	Allenby Road Park	Recreation Park	Local
WPRPe-002	Wellington Point	Belford Drive Road Reserve	Recreation Park	Local
WPRPe-003	Wellington Point	Brock Park	Recreation Park	Local

Project Number	Community of Interest	Description	Infrastructure Type	Level in Hierarchy
WPRPe-004	Wellington Point	Collingwood - Pitt Road Reserve	Recreation Park	Local
WPRPe-005	Wellington Point	Crossley Drive Park	Recreation Park	Local
WPRPe-006	Wellington Point	Duncan Street Park	Recreation Park	Local
WPRPe-007	Wellington Point	Goodall Street Park	Recreation Park	Local
WPRPe-008	Wellington Point	Harold & Enid Brown Park	Recreation Park	Local
WPRPe-009	Wellington Point	Helena Street Park	Recreation Park	Local
WPRPe-010	Wellington Point	Hilliards Street Park	Recreation Park	Local
WPRPe-012	Wellington Point	Liner Street Park	Recreation Park	Local
WPRPe-013	Wellington Point	Mindarie Crescent Park	Recreation Park	Local
WPRPe-014	Wellington Point	Plantation Place Park	Recreation Park	Local
WPRPe-015	Wellington Point	Plumer Street Park	Recreation Park	Local
WPRPe-016	Wellington Point	Poloni Place Nature Corridor	Recreation Park	Local
WPRPe-017	Wellington Point	Pye Lane Park	Recreation Park	Local
WPRPe-018	Wellington Point	Riverton Drive Park	Recreation Park	Local
WPRPe-020	Wellington Point	Rosella Street Park	Recreation Park	Local
WPRPe-021	Wellington Point	Skinner Avenue Park	Recreation Park	Local
WPRPe-022	Wellington Point	Sylvania Street Park	Recreation Park	Local
WPRPe-023	Wellington Point	Wharton Street Park	Recreation Park	Local
WPRPe-024	Wellington Point	Three Paddocks Park	Recreation Park	District
WPRPe-025	Wellington Point	Apex Park	Recreation Park	District
WPRPe-026	Wellington Point	Hilliards Creek Corridor - Montgomery Drive	Recreation Park	District
WPRPe-027	Wellington Point	Wellington Point Recreation Reserve	Recreation Park	Regional
WPSPe-028	Wellington Point	EGW Wood Sportsfield	Sport Park	Regional
WPSPe-029	Wellington Point	Sovereign Waters Foreshore	Recreation Park	Local
WPSPe-030	Wellington Point	Vantage Crescent Park	Recreation Park	Local

Table 10. Planned Open Space Facilities and/or Upgrades (Recreation Parks and Sport Parks)

Project Number	Community of Interest	Description	Infrastructure Type	Level in Hierarchy
AHRP-001	Alexandra Hills	Provide local Recreation opportunities in the Squirrel Glider Conservation Area	Recreation Park	Local
AHRP-002	Alexandra Hills	Provide local Recreation opportunities in the Scribbly Gums Conservation Area	Recreation Park	Local
AHRP-003	Alexandra Hills	Upgrade Ackworth Place Park to local Recreation standards	Recreation Park	Local
AHRP-004	Alexandra Hills	Upgrade Babiana Street Park to local Recreation standards	Recreation Park	Local
AHRP-005	Alexandra Hills	Upgrade Bellini Court Park to local Recreation standards	Recreation Park	Local
AHRP-006	Alexandra Hills	Upgrade Chipping Drive Park to local Recreation standards	Recreation Park	Local
AHRP-007	Alexandra Hills	Upgrade Crotona Road East Park to local Recreation standards	Recreation Park	Local
AHRP-008	Alexandra Hills	Upgrade Glover Crotona Link - North to local Recreation standards	Recreation Park	Local
AHRP-009	Alexandra Hills	Upgrade Heffernan Road Park Reserve to local Recreation standards	Recreation Park	Local
AHRP-010	Alexandra Hills	Upgrade Hyde Court Park to local Recreation standards	Recreation Park	Local
AHRP-011	Alexandra Hills	Upgrade Keynsham Street Park to local Recreation standards	Recreation Park	Local
AHRP-012	Alexandra Hills	Upgrade Mc Donald Reserve to local Recreation standards	Recreation Park	Local
AHRP-013	Alexandra Hills	Upgrade Workington Street Park to local Recreation standards	Recreation Park	Local
AHRP-014	Alexandra Hills	Develop master plan and upgrade George St Park to a district recreation park	Recreation Park	District
AHRP-015	Alexandra Hills	Develop master plan and upgrade Wimborne Road Park to district Recreation standards (check existing embellishments)	Recreation Park	District
AHRP-016	Alexandra Hills	Develop master plan and upgrade O'Gorman Street Park Reserve to district Recreation standards	Recreation Park	District

Project Number	Community of Interest	Description	Infrastructure Type	Level in Hierarchy
AHRP-017	Alexandra Hills	Implement masterplan for Windemere Road Park and upgrade to district Recreation standards	Recreation Park	District
AHRP-018	Alexandra Hills	Develop master plan and upgrade Hanover Drive Park to district Recreation standards (refer to assessment of Hanover Drive Bushland Refuge for shortfall of infrastructure this is not a conservation area)	Recreation Park	District
AHSP-019	Alexandra Hills	Develop and implement a Master Plan for Keith Surridge Park	Sport Park	District
BDRP-001	Birkdale	Upgrade Whitehall Avenue Creek Corridor to local Recreation standards	Recreation Park	Local
BDRP-002	Birkdale	Upgrade Agnes Street Park to local Recreation standards	Recreation Park	Local
BDRP-003	Birkdale	Upgrade Barron Reserve to local Recreation standards	Recreation Park	Local
BDRP-004	Birkdale	Upgrade Bath Street Park to local Recreation standards	Recreation Park	Local
BDRP-005	Birkdale	Upgrade Carinyan Reserve (West) to local Recreation standards	Recreation Park	Local
BDRP-006	Birkdale	Upgrade Goodge Court Park to local Recreation standards	Recreation Park	Local
BDRP-007	Birkdale	Upgrade Juanita Street Park to local Recreation standards	Recreation Park	Local
BDRP-008	Birkdale	Upgrade Lachlan Street Park to local Recreation standards	Recreation Park	Local
BDRP-009	Birkdale	Upgrade Leicester Street Park to local Recreation standards	Recreation Park	Local
BDRP-010	Birkdale	Upgrade Lobelia Street Park to local Recreation standards	Recreation Park	Local
BDRP-011	Birkdale	Upgrade MacFarlan Street Park to local Recreation standards	Recreation Park	Local
BDRP-012	Birkdale	Upgrade Pistachio Court Park to local Recreation standards	Recreation Park	Local

Project Number	Community of Interest	Description	Infrastructure Type	Level in Hierarchy
BDRP-013	Birkdale	Upgrade Sunnybay Drive Park to local Recreation standards	Recreation Park	Local
BDRP-014	Birkdale	Upgrade Surman Street Reserve to local Recreation standards	Recreation Park	Local
BDRP-015	Birkdale	Upgrade William Taylor Memorial Park to local Recreation standards	Recreation Park	Local
BDRP-016	Birkdale	Upgrade Wren Court Park to local Recreation standards	Recreation Park	Local
BDRP-017	Birkdale	Develop master plan and upgrade Byng Road Park to district Recreation standards	Recreation Park	District
BDRP-018	Birkdale	Develop master plan and upgrade Commodore Drive Park to regional Recreation standards	Recreation Park	Regional
BDSP-019	Birkdale	Upgrade Judy Holt Sportsfields to regional sporting standards as per Master Plan	Sport Park	Regional
BDSP-020	Birkdale	Establish a new district sporting facility in Birkdale	Sport Park	District
CPRP-001	Capalaba	Upgrade Lawlor Reserve to local recreation standards	Recreation Park	Local
CPRP-002	Capalaba	Upgrade Barber Drive Park to local Recreation standards	Recreation Park	Local
CPRP-003	Capalaba	Upgrade Blarney Street Park to local Recreation standards	Recreation Park	Local
CPRP-004	Capalaba	Upgrade Chantelle Court Park to local Recreation standards	Recreation Park	Local
CPRP-005	Capalaba	Upgrade Crighton Court Park to local Recreation standards	Recreation Park	Local
CPRP-006	Capalaba	Upgrade Howletts Road Park to local Recreation standards	Recreation Park	Local
CPRP-007	Capalaba	Upgrade Jacaranda Road Park to local Recreation standards	Recreation Park	Local
CPRP-008	Capalaba	Upgrade Keith Street Bushland Refuge to local Recreation standards	Recreation Park	Local
CPRP-009	Capalaba	Upgrade Krimmer Place Park to local Recreation standards	Recreation Park	Local

Project Number	Community of Interest	Description	Infrastructure Type	Level in Hierarchy
CPRP-010	Capalaba	Upgrade Little Killarney Park to local Recreation standards	Recreation Park	Local
CPRP-011	Capalaba	Upgrade Lyndon Road Park to local Recreation standards	Recreation Park	Local
CPRP-012	Capalaba	Upgrade McTaggart Street Park to local Recreation standards	Recreation Park	Local
CPRP-013	Capalaba	Upgrade Nangando Street Park to local Recreation standards	Recreation Park	Local
CPRP-014	Capalaba	Upgrade Sevenoaks Street Park to local Recreation standards	Recreation Park	Local
CPRP-015	Capalaba	Upgrade Spirit Drive Park to local Recreation standards	Recreation Park	Local
CPRP-016	Capalaba	Upgrade Winter Memorial Park to local Recreation standards	Recreation Park	Local
CPRP-017	Capalaba	Implement master plan for Valentine Road Park	Recreation Park	District
CPRP-018	Capalaba	Develop master plan and upgrade Brosnan Drive Park to district Recreation standards	Recreation Park	District
CPRP-019	Capalaba	Develop master plan and upgrade Wentworth Drive Park to district Recreation standards	Recreation Park	District
CPRP-020	Capalaba	Continue to upgrade Capalaba Regional Park, including implementing the playground master plan and upgrading the master plan	Recreation Park	Regional
CPSP-021	Capalaba	Upgrade Degen Rd Park to district sport park standards	Sport Park	District
CPSP-022	Capalaba	Develop and implement a master plan for Duncan Road Sportsfields	Sport Park	Regional
CPSP-023	Capalaba	Upgrade Sam Sciacca Sportsfields (excludes intergenerational facility)	Sport Park	District
CPRP-024	Capalaba	Establish a new local recreation park in Capalaba	Recreation Park	Local
CPRP-025	Capalaba	Establish a second local recreation park in Capalaba	Recreation Park	Local
CPRP-026	Capalaba	Establish a third local recreation park in Capalaba	Recreation Park	Local

Project Number	Community of Interest	Description	Infrastructure Type	Level in Hierarchy
CLRP-001	Cleveland	Upgrade Haggup Street Road Reserve to local Recreation standards	Recreation Park	Local
CLRP-002	Cleveland	Upgrade Janlaw Street Park to local Recreation standards	Recreation Park	Local
CLRP-003	Cleveland	Upgrade Long Street Park to local Recreation standards	Recreation Park	Local
CLRP-004	Cleveland	Upgrade Nandeebie Park Reserve to local Recreation standards	Recreation Park	Local
CLRP-005	Cleveland	Upgrade Peel Street Park Road Reserve to local Recreation standards	Recreation Park	Local
CLRP-006	Cleveland	Upgrade Phillip Street Park to local Recreation standards	Recreation Park	Local
CLRP-007	Cleveland	Upgrade Scott Street Park to local Recreation standards	Recreation Park	Local
CLRP-008	Cleveland	Develop master plan and upgrade Donald Simpson Park to district Recreation standards	Recreation Park	District
CLRP-009	Cleveland	Implement master plan for G.J. Walter Park Reserve and upgrade to district Recreation standards	Recreation Park	District
CLRP-010	Cleveland	Develop master plan and upgrade Goleby Esplanade Foreshore (Cape Cleveland) to district Recreation standards	Recreation Park	District
CLRP-011	Cleveland	Develop master plan and upgrade Linear Park to district Recreation standards	Recreation Park	District
CLRP-012	Cleveland	Develop master plan and upgrade William Ross Park to district Recreation standards	Recreation Park	District
CLRP-013	Cleveland	Implement the landscape master plan for Cleveland Point Reserve	Recreation Park	Regional
CLRP-014	Cleveland	Implement the landscape master plan for Raby Bay Foreshore Park	Recreation Park	Regional
CLSP-015	Cleveland	Implement master plan for Cleveland Showgrounds	Sport Park	Regional
CLSP-016	Cleveland	Implement master plan for Henry Zigenfusz Park	Sport Park	Regional

Project Number	Community of Interest	Description	Infrastructure Type	Level in Hierarchy
OMRP-001	Ormiston	Upgrade Grace Hartley Park to local Recreation standards	Recreation Park	Local
OMRP-002	Ormiston	Upgrade Empire Point Foreshores to local Recreation standards	Recreation Park	Local
OMRP-003	Ormiston	Upgrade Lucy Court Park (attached to Finucane Rd Bushland refuge) to local recreation standards	Recreation Park	Local
OMRP-004	Ormiston	Upgrade Stevens Place Park to local recreation standards	Recreation park	Local
OMRP-005	Ormiston	Upgrade Dundas St Park to local recreation standards	Recreation Park	Local
OMRP-006	Ormiston	Upgrade Hilliards Creek Link (south) to local Recreation standards	Recreation Park	Local
OMRP-007	Ormiston	Develop master plan and upgrade Raby Esplanade Park to district Recreation standards	Recreation Park	District
OMSP-008	Ormiston	Implement master plan for Redlands Softball Park	Sport Park	Regional
RBRP-001	Redland Bay	Upgrade Baylink Drive Park to local Recreation standards	Recreation Park	Local
RBRP-002	Redland Bay	Upgrade Lanyard Place Park to local Recreation standards	Recreation Park	Local
RBRP-003	Redland Bay	Upgrade Moreton View Park to local Recreation standards	Recreation Park	Local
RBRP-004	Redland Bay	Implement master plan for Nev Stafford Park Reserve	Recreation Park	Local (special memorial)
RBRP-005	Redland Bay	Upgrade Orchard Beach Foreshore (North) to local Recreation standards	Recreation Park	Local
RBRP-006	Redland Bay	Upgrade Pinelands Circuit Nature Link to local Recreation standards	Recreation Park	Local
RBRP-007	Redland Bay	Develop master plan and upgrade Cliftonville Place Link to district Recreation standards	Recreation Park	District
RBRP-008	Redland Bay	Develop master plan and upgrade Grevillea Street Park (an adjoining new parkland contribution) to district Recreation standards	Recreation Park	District

Project Number	Community of Interest	Description	Infrastructure Type	Level in Hierarchy
RBSP-009	Redland Bay	Upgrade Sel Outridge Park to district sporting standard as per draft Master Plan	Sport Park	District
RBSP-010	Redland Bay	Upgrade Charlie Buckler Sportsfield to district sporting standard	Sport Park	District
RBRP-011	Redland Bay	Establish a new local recreation park in Redland Bay	Recreation Park	Local
RBRP-012	Redland Bay	Establish a second new local recreation park in Redland Bay	Recreation Park	Local
RBRP-013	Redland Bay	Establish a third new local recreation park in Redland Bay	Recreation Park	Local
RBRP-014	Redland Bay	Establish a fourth new local recreation park in Redland Bay	Recreation Park	Local
RBRP-015	Redland Bay	Establish a fifth new local recreation park in Redland Bay	Recreation Park	Local
RBRP-016	Redland Bay	Establish a sixth new local recreation park in Redland Bay	Recreation Park	Local
RBRP-017	Redland Bay	Establish a seventh new local recreation park in Redland Bay	Recreation Park	Local
RBRP-018	Redland Bay	Establish a new district recreation park in Redland Bay	Recreation Park	District
RBSP-019	Redland Bay	Establish a new district sporting facility in Redland Bay (30 ha land size)	Sport Park	District
SMCRP-001	Sheldon - Mt Cotton	Upgrade Emu Street Reserve to local recreation standard	Recreation Park	Local
SMCRP-002	Sheldon - Mt Cotton	Upgrade Wallaby Creek Corridor, Summit St Reserve to local recreation standards	Recreation Park	Local
SMCRP-003	Sheldon - Mt Cotton	Upgrade Bohemia Court Park to local Recreation standards	Recreation Park	Local
SMCRP-004	Sheldon - Mt Cotton	Establish a new local recreation park in Sheldon-Mt Cotton	Recreation Park	Local
SMCRP-005	Sheldon - Mt Cotton	Establish a new local recreation park in Mt Cotton	Recreation Park	Local
SMCRP-006	Sheldon - Mt Cotton	Establish a new local recreation park in Mt	Recreation Park	Local

Project Number	Community of Interest	Description	Infrastructure Type	Level in Hierarchy
		Cotton		
SMCRP-007	Sheldon - Mt Cotton	Establish a new local recreation park in Mt Cotton	Recreation Park	Local
SMCRP-008	Sheldon - Mt Cotton	Establish a new local recreation park in Mt Cotton	Recreation Park	Local
SMCRP-009	Sheldon - Mt Cotton	Establish a new local recreation park in Mt Cotton	Recreation Park	Local
SMCRP-010	Sheldon - Mt Cotton	Establish a new local recreation park in Mt Cotton	Recreation Park	Local
SMCRP-011	Sheldon - Mt Cotton	Establish a new local recreation park in Mt Cotton	Recreation Park	Local
SMCRP-012	Sheldon - Mt Cotton	Establish a new local recreation park in Mt Cotton	Recreation Park	Local
SMCRP-013	Sheldon - Mt Cotton	Establish a new district recreation park in Sheldon-Mt Cotton	Recreation Park	District
SMCRP-014	Sheldon - Mt Cotton	Develop master plan and upgrade Mt Community Community Park to regional recreation standards	Recreation Park	Regional
TSRP-001	Thorneside	Upgrade Fisher Rd Park to local recreation standards	Recreation Park	Local
TSRP-002	Thorneside	Upgrade Alma Street Park to local Recreation standards	Recreation Park	Local
TSRP-003	Thorneside	Upgrade Gradi Court Park to local Recreation standards	Recreation Park	Local
TSRP-004	Thorneside	Upgrade Willard-Weber Reserve to local Recreation standards	Recreation Park	Local
TSRP-005	Thorneside	Develop master plan and upgrade Eva Street Foreshore (Ferry Rd / Railway Pde) to district Recreation standards	Recreation Park	District
TSRP-006	Thorneside	Develop master plan and upgrade Beth Boyd Park to regional recreation standards	Recreation Park	Regional
TSSP-007	Thorneside	Develop and implement a master plan for William Taylor Memorial Sportsfield	Sport Park	District

Project Number	Community of Interest	Description	Infrastructure Type	Level in Hierarchy
TSSP-008	Thorneside	Develop master plan and upgrade Queens Esplanade parklands to regional recreation standards	Recreation Park	Regional
TLRP-001	Thornlands	Upgrade Abbotsleigh Street Park to local Recreation standards	Recreation Park	Local
TLRP-002	Thornlands	Upgrade Anniversary Park to local Recreation standards	Recreation Park	Local
TLRP-003	Thornlands	Upgrade Tokay Court Park to local Recreation standards	Recreation Park	Local
TLRP-004	Thornlands	Implement landscape master plan for Crystal Waters Park and upgrade to district recreation standards	Recreation Park	District
TLRP-005	Thornlands	Develop master plan and upgrade Robert Mackie Park to district Recreation standards	Recreation Park	District
TLSP-006	Thornlands	Develop master plan and upgrade William Steward Park to district sporting standards	Sport Park	District
TLSP-007	Thornlands	Develop and implement a regional landscape master plan for Pinklands Sporting Complex (underway)	Sport Park	Regional
TLRP-008	Thornlands	Establish a new local recreation park in Thornlands	Recreation Park	Local
TLRP-009	Thornlands	Establish a second new local recreation park in Thornlands	Recreation Park	Local
TLRP-010	Thornlands	Establish a third new local recreation park in Thornlands	Recreation Park	Local
TLRP-011	Thornlands	Establish a new local recreation park in Thornlands in the Emerging Urban Community Zone	Recreation Park	Local
TLRP-012	Thornlands	Establish a new local recreation park in Thornlands in the Emerging Urban Community Zone	Recreation Park	Local
TLRP-013	Thornlands	Establish a new local recreation park in Thornlands in the Emerging Urban Community Zone	Recreation Park	Local

Project Number	Community of Interest	Description	Infrastructure Type	Level in Hierarchy
TLRP-014	Thornlands	Establish a new local recreation park in Thornlands in the Emerging Urban Community Zone	Recreation Park	Local
TLRP-015	Thornlands	Establish a new local recreation park in Thornlands in the Emerging Urban Community Zone	Recreation Park	Local
TLRP-016	Thornlands	Establish a new local recreation park in Thornlands in the Emerging Urban Community Zone	Recreation Park	Local
VPRP-001	Victoria Point	Upgrade the Egret Colony reserve for local recreation use	Recreation Park	Local
VPRP-002	Victoria Point	Investigate local Recreation potential in Point Halloran Conservation Area and Orana Street Park	Recreation Park	Local
VPRP-003	Victoria Point	Upgrade Aspect Drive Link to local Recreation standards	Recreation Park	Local
VPRP-004	Victoria Point	Upgrade Bassil Parade Park to local Recreation standards	Recreation Park	Local
VPRP-005	Victoria Point	Upgrade Jeanne Drive Park to local Recreation standards	Recreation Park	Local
VPRP-006	Victoria Point	Upgrade Parklands Court Bushland Refuge to local Recreation standards	Recreation Park	Local
VPRP-007	Victoria Point	Upgrade Stacey Court Park to local Recreation standards	Recreation Park	Local
VPRP-008	Victoria Point	Upgrade Brookvale Drive Park to local recreation Standards.	Recreation Park	Local
VPRP-009	Victoria Point	Upgrade Sycamore Parade Park to local Recreation standards	Recreation Park	Local
VPRP-010	Victoria Point	Upgrade a section of Sandy Drive Creek Corridor (site 1) to local recreation standards	Recreation Park	Local
VPRP-011	Victoria Point	Upgrade a section of Sandy Drive Creek Corridor (site 2) to local recreation standards	Recreation Park	Local
VPRP-012	Victoria Point	Upgrade a section of Sandy Drive Creek Corridor (site 3) to local	Recreation Park	Local

Project Number	Community of Interest	Description	Infrastructure Type	Level in Hierarchy
		recreation standards		
VPRP-013	Victoria Point	Upgrade a section of Creekside Circuit bushlands (? Intrepid Drive Bushland Refuge) (site 1) to local recreation standards	Recreation Park	Local
VPRP-014	Victoria Point	Implement landscape master plan for Les Moore Park	Recreation Park	District
VPRP-015	Victoria Point	Develop master plan and upgrade Orana Esplanade Foreshore to district Recreation standards	Recreation Park	District
VPRP-016	Victoria Point	Implement the Land Management Plan and landscape master plan to upgrade Victoria Point Reserve to regional recreation standards	Recreation Park	Regional
VPSP-017	Victoria Point	Develop and implement a master plan and upgrade Ern Dowling Sportsfields to regional standards	Sport Park	Regional
VPRP-018	Victoria Point	Establish a new local recreation park in Victoria Point	Recreation Park	Local
VPRP-019	Victoria Point	Establish a second new local recreation park in Victoria Point	Recreation Park	Local
WPRP-001	Wellington Point	Upgrade Belford Drive Road Reserve to local Recreation standards	Recreation Park	Local
WPRP-002	Wellington Point	Upgrade Crossley Drive Park to local Recreation standards	Recreation Park	Local
WPRP-003	Wellington Point	Upgrade Goodall Street Park to local Recreation standards	Recreation Park	Local
WPRP-004	Wellington Point	Upgrade Helena Street Park to local Recreation standards	Recreation Park	Local
WPRP-005	Wellington Point	Upgrade Liner Street Park to local Recreation standards	Recreation Park	Local
WPRP-006	Wellington Point	Upgrade Plantation Place Park to local Recreation standards	Recreation Park	Local
WPRP-007	Wellington Point	Upgrade Roberts Street Park to local Recreation standards	Recreation Park	Local

Project Number	Community of Interest	Description	Infrastructure Type	Level in Hierarchy
WPRP-008	Wellington Point	Upgrade Rosella Street Park to local Recreation standards	Recreation Park	Local
WPRP-009	Wellington Point	Upgrade Skinner Avenue Park to local Recreation standards	Recreation Park	Local
WPRP-010	Wellington Point	Upgrade Sylvania Street Park to local Recreation standards	Recreation Park	Local
WPRP-011	Wellington Point	Upgrade Wharton Street Park to local Recreation standards	Recreation Park	Local
WPRP-012	Wellington Point	Implement landscape master plan for Montgomery Drive Nature Link and Doug Tiller Reserve	Recreation Park	District
WPRP-013	Wellington Point	Implement landscape master plan for Three Paddocks Park	Recreation Park	District
WPRP-014	Wellington Point	Implement the regional recreation landscape master plan for Wellington Point Reserve	Recreation Park	Regional
WPSP-015	Wellington Point	Develop and implement a regional recreation landscape master plan for EGW Wood Sportsfields	Sport Park	Regional
WPSP-016	Wellington Point	Establish a new district sporting facility in Wellington Point	Sport Park	District