

ZONING

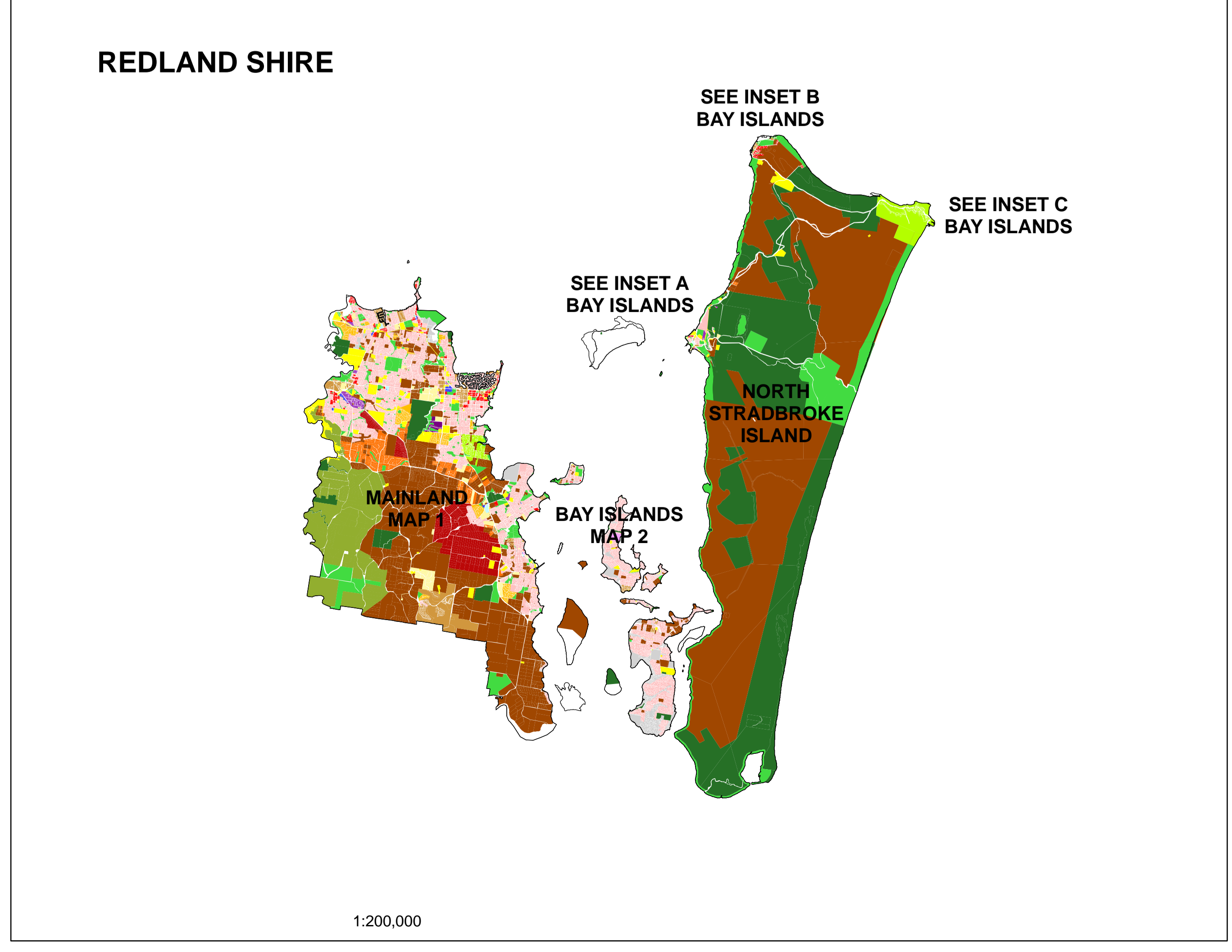
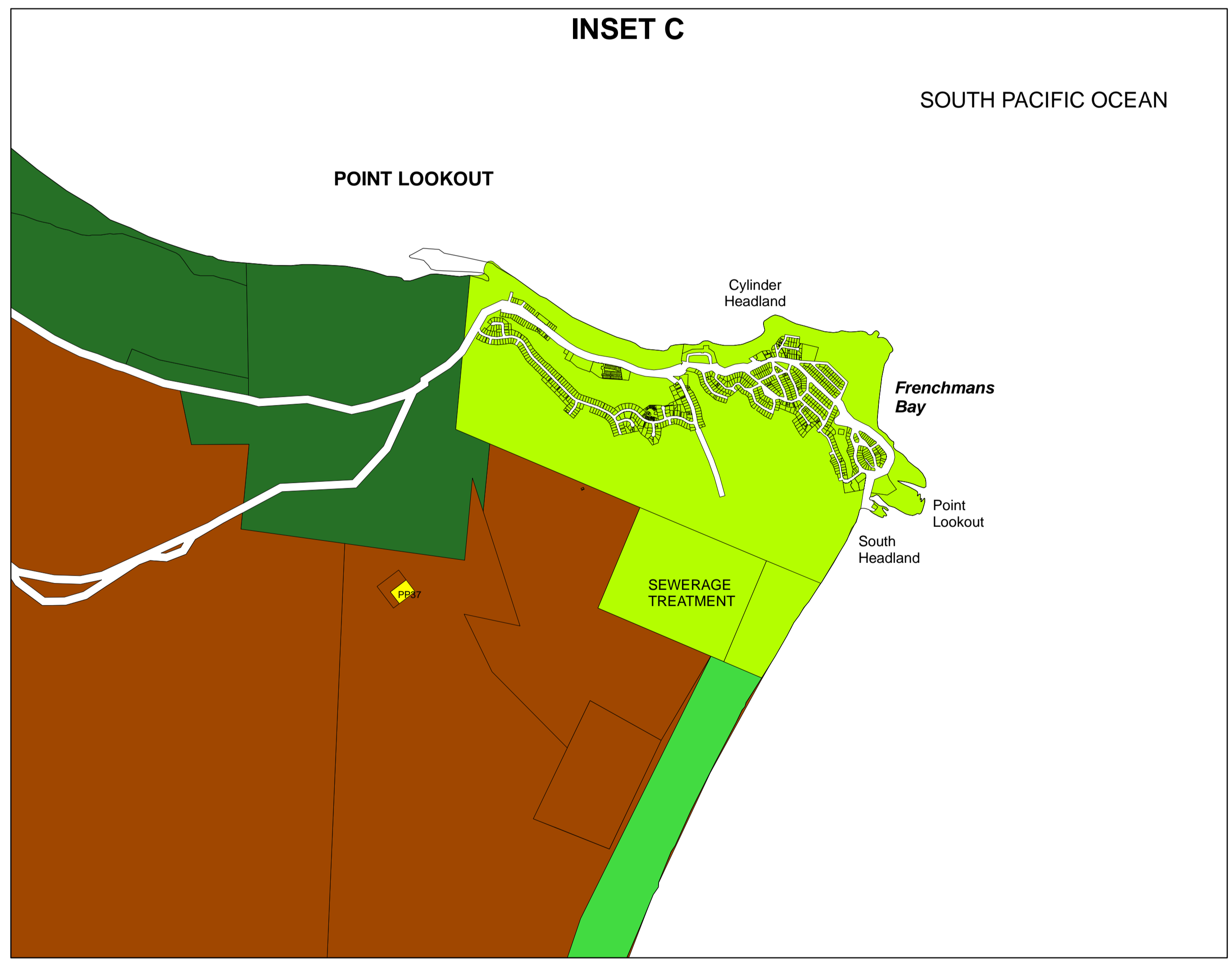
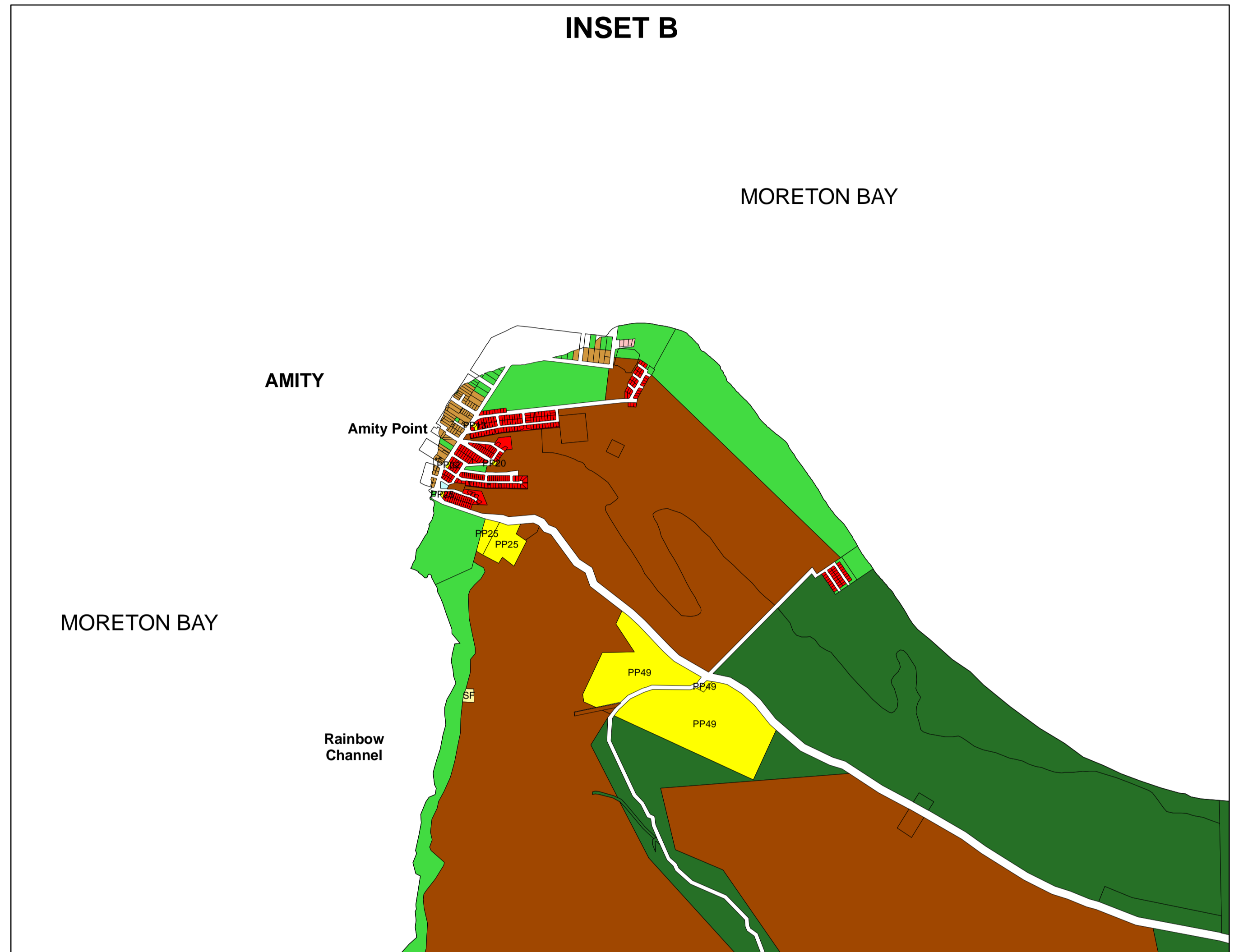
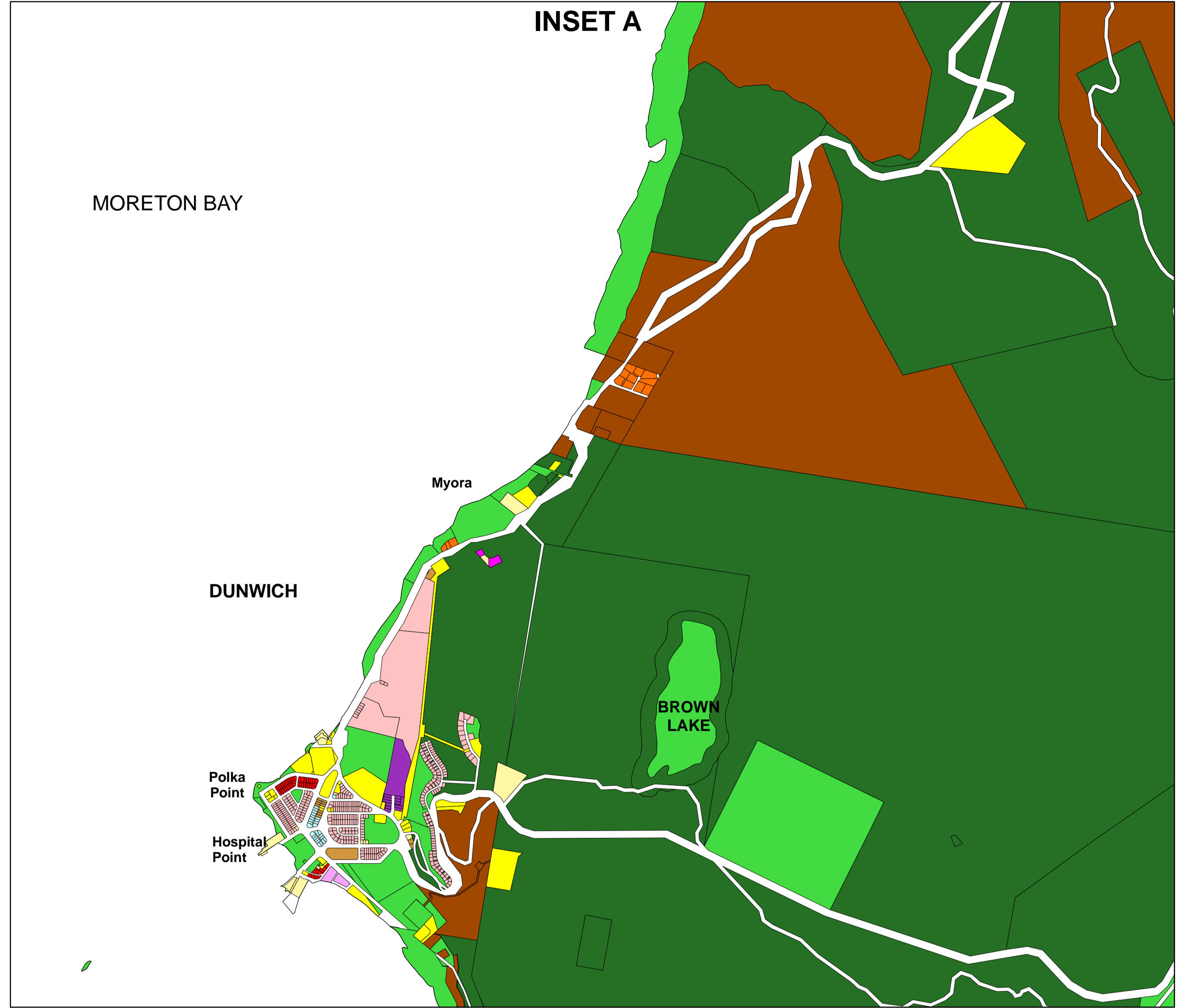
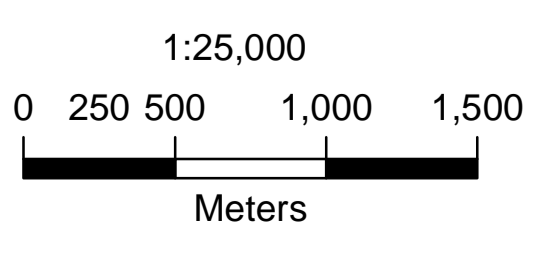
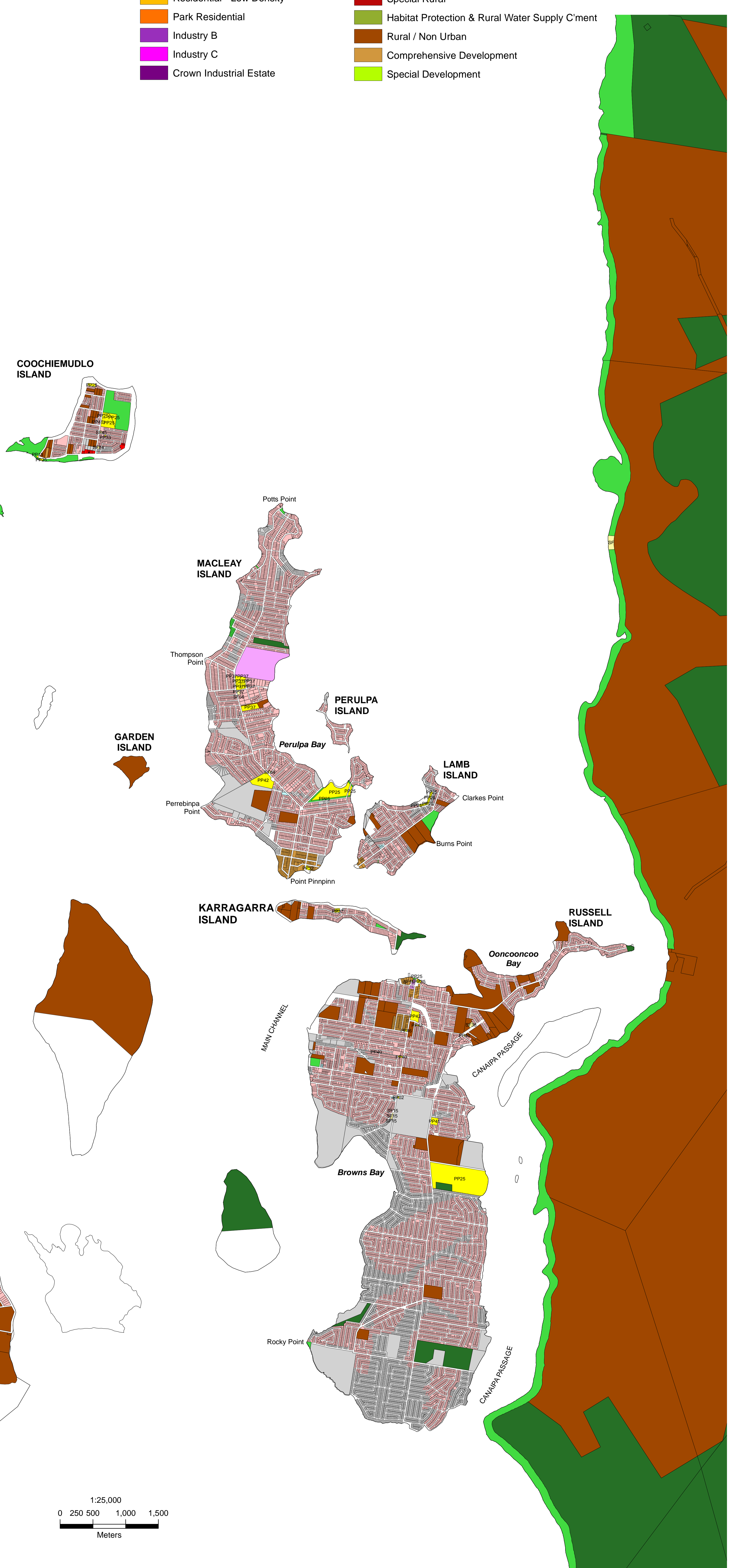
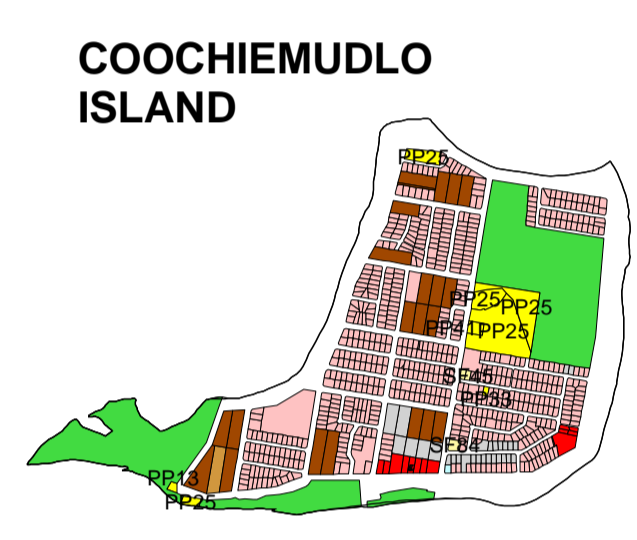
MAP 2 OF 2



© REDLAND SHIRE COUNCIL (PLANNING & ENVIRONMENTAL SERVICES PROGRAM) 1997
 LATEST SCHEME AMENDMENTS TO 6.2.2017
 © THE STATE OF QUEENSLAND (DEPARTMENT OF NATURAL RESOURCES) 1997

KEY

- | | |
|---------------------------------|--|
| Shopping | Public Open Space |
| Commercial | Restricted Open Space |
| Tourist, Business & Residential | Public Purposes |
| Residential B | Special Facilities |
| Residential A | Drainage Problem |
| Residential - Low Density | Special Rural |
| Park Residential | Habitat Protection & Rural Water Supply C'ment |
| Industry B | Rural / Non Urban |
| Industry C | Comprehensive Development |
| Crown Industrial Estate | Special Development |



1:200,000