

Site No	Site Name
56	Blakely's Slip Stradbroke Island
57	Ron Stark Oval
58	Amity Point Boat Ramp North Stradbroke Island

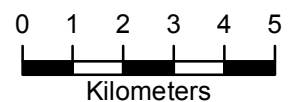
## Overview of Canoe Launch Points in Redland City



1:150,000

### Canoe Launch Point

- High Tide
- Mid Tide
- All Tides
- Other Maps



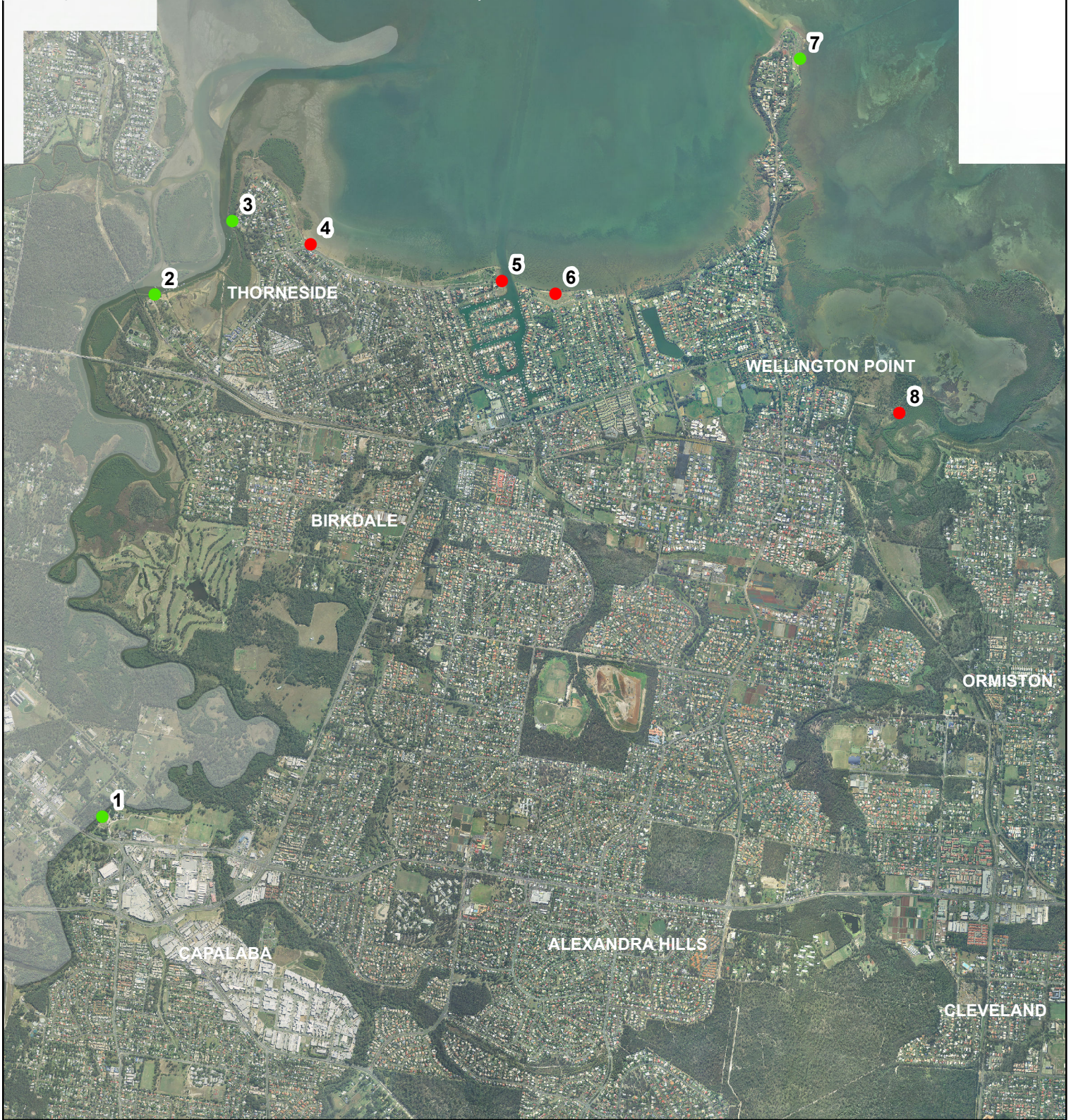
May 2015

Site No	Site Name	Address	Tide Access	Latitude	Longitude
1	John Fredrick Park (Rocks Crossing)	2-14 Old Cleveland Road, Capalaba	All Tides	27 31 06.96 S	153 11 17.88 E
2	Jack and Edna Finney Park -Thorneside Canoe Ramp	2-40 Railway Parade, Thorneside	All Tides	27 28 59.88 S	153 11 31.92 E
3	Helen Street Boat Ramp	Crn Helen Street and Queens Esplanade Thorneside	All Tides	27 28 41.88 S	153 11 53.16 E
4	Beth Boyd Park	224-236 Queens Esplanade Thorneside	High Tide	27 28 47.64 S	153 12 14.40 E
5	Aquatic Paradise Park West	18 Commodore Drive, Birkdale	High Tide	27 28 56.28 S	153 13 06.60 E
6	Aquatic Paradise Park East	5B Dorsal Drive, Birkdale	High Tide	27 28 59.52 S	153 13 21.36 E
7	Wellington Point Recreation Reserve	1A Main Road, Wellington Point	All Tides	27 28 02.28 S	153 14 27.96 E
8	Bligh Street Wetland	End of Bligh Street Wellington Point	High Tide	27 29 28.32 S	153 14 55.32 E
9	Raby Esplanade Park	Crn Dundas Street and Raby Esplanade, Ormiston	High Tide	27 30 58.68 S	153 15 45.36 E
10	Raby Bay Foreshore Park	90-110 Masthead Drive, Cleveland	All Tides	27 30 57.96 S	153 16 08.40 E
11	Raby Bay Boulevard Park	23-31 Raby Bay Boulevard, Cleveland	Mid Tide	27 30 56.52 S	153 17 08.88 E
12	Cleveland Point Recreation Reserve	242 Shore Street North, Cleveland	High Tide	27 30 34.92 S	153 17 19.68 E
13	G J Walter Park	240 Middle Street, Cleveland	High Tide	27 31 27.12 S	153 17 10.68 E
14	Oyster Point Park	1-15 Phelan Street, Cleveland	High Tide	27 32 05.28 S	153 17 00.24 E
15	Manning Esplanade Foreshore	41-107 Manning Esplanade, Thornlands	High Tide	27 33 10.08 S	153 16 47.64 E
16	Orana Esplanade Foreshore Park	37A Orana Esplanade, Victoria Point	High Tide	27 34 13.44 S	153 18 25.56 E
17	Les Moore Park	67 Wilson Esplanade, Victoria Point	High Tide	27 34 46.56 S	153 18 29.88 E
18	Victoria Point Recreation Reserve	9 Masters Avenue, Victoria Point	High Tide	27 34 54.84 S	153 19 02.28 E
19	Wilson Street Foreshore	Southern end of Wilson Street, Victoria Point	High Tide	27 35 02.04 S	153 18 47.16 E
20	W H Yeo Park	30 Thompson Street, Victoria Point	High Tide	27 35 25.80 S	153 18 24.12 E
21	Sel Outridge Park	1-3 Peel Street, Redland Bay	High Tide	27 36 47.52 S	153 18 22.68 E
22	Point Talburpin - Tucker Reserve	End of Torquay Road, Redland Bay	High Tide	27 38 21.84 S	153 18 54.00 E
23	Sandy Cove Park (in Sandy Cove Place)	12-22 Sandy Cove Place, Redland Bay	High Tide	27 38 49.92 S	153 18 30.96 E
24	Coochiemudlo Foreshore	51 Victoria Parade South, Coochiemudlo Island	All Tides	27 34 28.56 S	153 19 59.52 E
25	Dalpura Street Boat Ramp	End of Dalpura Street, Macleay Island	High Tide	27 35 22.20 S	153 21 24.12 E
26	Orana Street (end of road reserve)	End of Orana Street, Macleay Island	High Tide	27 35 44.52 S	153 21 14.04 E
27	Kalara Street (end of road reserve - next to bowls club)	End of Kalara Street, Macleay Island	High Tide	27 35 46.68 S	153 21 12.60 E
28	Coast Road Foreshore Park	79 Coast Road, Macleay Island	High Tide	27 36 00.00 S	153 21 08.64 E
29	Thomas Street (end of Road Reserve between 48-50 & 46)	End of Thomas Street, Macleay Island	High Tide	27 37 34.68 S	153 21 25.56 E
30	2 Brighton Rd (part of the bay next to Macleay Island barge ramp)	2 Brighton Road, Macleay Island	All Tides	27 37 53.04 S	153 21 57.24 E
31	Karragarra Foreshore (north west corner)	176-180 The Esplanade, Karragarra Island	All Tides	27 38 07.08 S	153 21 43.20 E
32	Palm Beach Road Park (end of Kurrajong Rd)	Crn Kurrajong and Palm Beach Road, Russell Island	High Tide	27 40 50.88 S	153 22 25.68 E
33	Rocky Point Park	2 Glendale Road, Russell Island	Mid Tide	27 41 47.04 S	153 21 55.80 E
34	The Boulevard (informal boat ramp to the north of the park)	54-60 The Boulevard, Russell Island	High Tide	27 42 16.92 S	153 23 23.64 E
35	Lions Boulevard Park	30-50 The Boulevard, Russell Island	High Tide	27 42 10.44 S	153 23 26.88 E
36	15 Wahine Drive	15 Wahine Drive, Russell Island	High Tide	27 40 40.08 S	153 23 36.24 E
37	Skiff Street (end of road reserve)	Eastern end of Skiff Street, Russell Island	High Tide	27 39 43.92 S	153 23 24.36 E
38	Oasis Drive (between 32 and 34 - end of a road reserve)	next door to 32 Oasis Drive, Russell Island	High Tide	27 38 56.40 S	153 23 56.04 E
39	Mangrove Place	next door to 18 Emerson Street, Russell Island	High Tide	27 38 31.92 S	153 24 26.28 E
40	Thompson Esplanade (end of a road reserve)	Northern end of Thompson Esplanade, Russell Island	High Tide	27 38 30.12 S	153 24 12.96 E
41	Hill Street (end of road reserve)	Northern end of Hill Street, Russell Island	High Tide	27 38 44.16 S	153 23 45.24 E
42	High Street Park	1 High Street, Russell Island	All Tides	27 38 45.24 S	153 22 55.20 E
43	Jock Kennedy Park	21 Douglas Street, Russell Island	High Tide	27 38 46.32 S	153 22 40.08 E
44	Barge Ramp at Lamb Island	Western end of Lucas Drive, Lamb Island	High Tide	27 37 50.88 S	153 22 22.08 E
45	Pioneer Park, Lamb Island	125-133 Lucas Drive, Lamb Island	High Tide	27 37 23.88 S	153 23 07.80 E
46	Corroboree Place Park	21 Cotton Tree Avenue, Macleay Island	High Tide	27 37 10.92 S	153 22 29.28 E
47	Anglers Place (end of road reserve)	Anglers Place, Perulpa Island	High Tide	27 36 39.24 S	153 22 15.24 E
48	Crn Blue Vista Street and Calm Waters Cres (Road Reserve)	Crn Blue Vista Street and Calm Waters Cres, Perulpa Island	High Tide	27 36 33.48 S	153 22 01.92 E
49	Pecan Street Park (including the end of a road reserve)	33 Pecan Street, Macleay Island	High Tide	27 36 51.12 S	153 21 37.08 E
50	Orion Street (end of road reserve)	40 Orion Street, Macleay Island	High Tide	27 36 36.36 S	153 21 37.08 E
51	Koonwarra Parade Foreshore Park	26-30 Koonwarra Parade, Macleay Island	High Tide	27 35 54.60 S	153 21 42.12 E
52	Golden Sands Boulevard (south) along road reserve	Golden Sands Boulevard, Macleay Island	High Tide	27 35 43.44 S	153 21 44.28 E
53	Golden Sands Boulevard (north) along road reserve	Golden Sands Boulevard, Macleay Island	High Tide	27 35 37.32 S	153 21 45.00 E
54	8 Coorong Street	8 Coorong Street, Macleay Island	High Tide	27 35 31.56 S	153 21 50.04 E
55	Pats Park, Beelong Street	143-157 Beelong Street, Macleay Island	High Tide	27 34 54.12 S	153 21 41.76 E
56	Blakely's Slip Stradbroke Island	no street address	High Tide	27 34 25.32 S	153 24 36.36 E
57	Ron Stark Oval	2 Ballow Road, Dunwich	High Tide	27 30 01.80 S	153 24 03.96 E
58	Amity Point Boat Ramp North Stradbroke Island	24-42 Claytons Road, Amity	All Tides	27 24 04.32 S	153 26 16.44 E

## List of Canoe Launch Points in Redland City



Site No	Site Name
1	John Fredrick Park (Rocks Crossing)
2	Jack and Edna Finney Park -Thorneside Canoe Ramp
3	Helen Street Boat Ramp
4	Beth Boyd Park
5	Aquatic Paradise Park West
6	Aquatic Paradise Park East
7	Wellington Point Recreation Reserve
8	Bligh Street Wetland



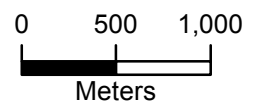
**Map 1 of Canoe Launch Points  
in Redland City**



1:40,000

**Canoe Launch Point**

- High Tide
- Mid Tide
- All Tides



Aerial Imagery 2008

May 2015



Site No	Site Name
9	Raby Esplanade Park
10	Raby Bay Foreshore Park
11	Raby Bay Boulevard Park
12	Cleveland Point Recreation Reserve
13	G J Walter Park
14	Oyster Point Park
15	Manning Esplanade Foreshore
16	Orana Esplanade Foreshore Park
17	Les Moore Park
18	Victoria Point Recreation Reserve
19	Wilson Street Foreshore
20	W H Yeo Park
24	Coochiemudlo Foreshore

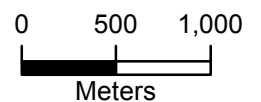
**Map 2 of Canoe Launch Points  
in Redland City**



1:40,000

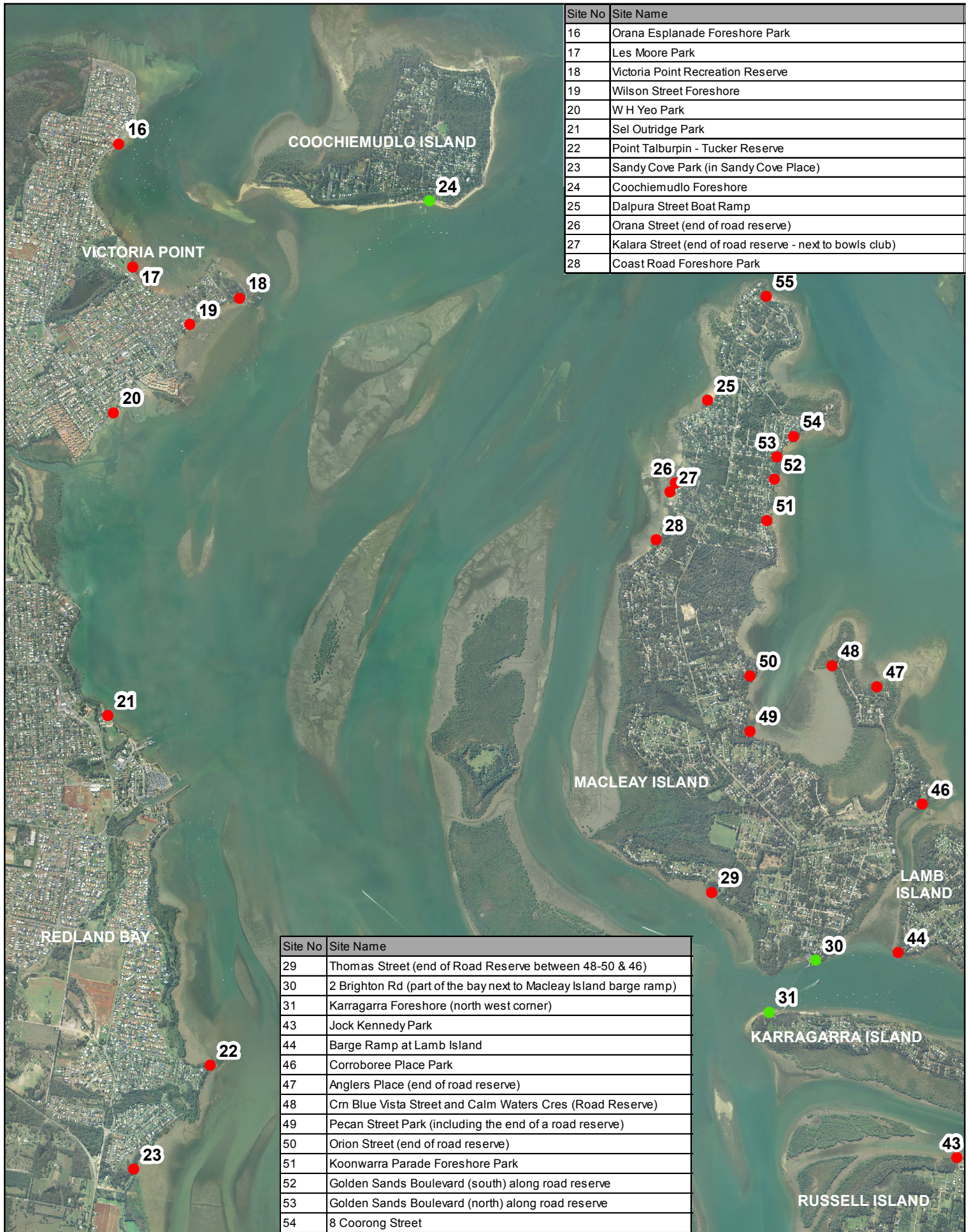
**Canoe Launch Point**

- High Tide
- Mid Tide
- All Tides



Aerial Imagery 2008

May 2015



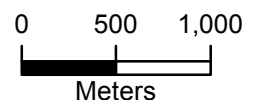
### Map 3 of Canoe Launch Points in Redland City



1:40,000

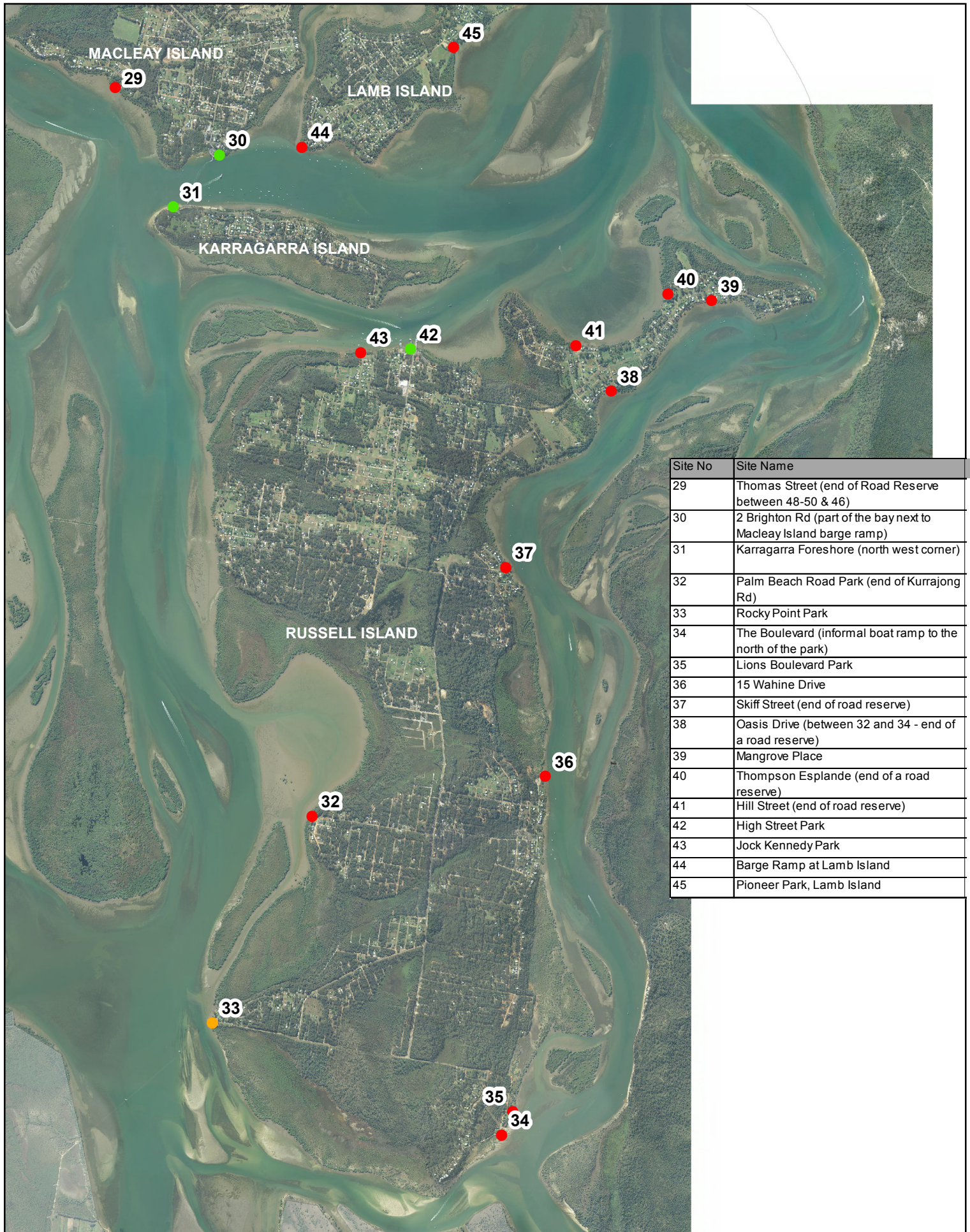
#### Canoe Launch Point

- High Tide
- Mid Tide
- All Tides



Aerial Imagery 2008

May 2015



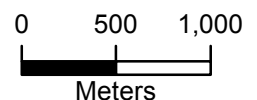
**Map 4 of Canoe Launch Points in Redland City**



1:40,000

**Canoe Launch Point**

- High Tide
- Mid Tide
- All Tides



Aerial Imagery 2008

May 2015