

# Redlands 2030

*creating our future*

## Living in the Redlands



Now	The Future – In 2030
<p>In 2006, the population of Redland City was 131,210.</p>	<p>The State Government draft South East Queensland Regional Plan 2009-2031 requires Redland City to accommodate an additional 19,500 new dwellings by 2031.</p> <p>Population will increase by an estimated 50,000 people during the period 2006 - 2031.</p>
<p>Urban development has taken place on previously undeveloped sites.</p>	<p>Over 50% of the city’s dwelling growth to 2026 is expected to be accommodated through changing lot sizes and redevelopment of existing developed areas. This growth will be predominantly focused around key activity centres and public transport interchanges.</p>
<p>From 2001 to 2006, the fastest growing suburbs in the Redlands were Redland Bay, Thornlands, Wellington Point and Victoria Point.</p>	<p>Future growth is expected to occur in the mainland suburbs of Thornlands, Victoria Point, Redland Bay, Cleveland and Capalaba. Population growth on the Southern Moreton Bay Islands is also expected to continue.</p>
<p>In 2006, 40% of resident workers were employed within the city.</p>	<p>By 2030, it is hoped that 60% of resident workers will be employed within the city. To facilitate this, new integrated employment areas are planned for Redland Bay and Thornlands.</p>
<p>In 2006, 4.8% of commuters used public transport (train, bus or ferry). In 2006, 78.3% of commuters used cars.</p>	<p>Council will continue to deliver an improved network of bike and pedestrian paths and advocate improvements to the public transport systems administered by the state government.</p>
<p>The Redlands has an undersupply of small dwellings (1 and 2 bedroom) and a comparative oversupply of larger dwellings (3+ bedrooms).</p> <p>The median house price for 2005 was \$335,000 – up 123% from \$150,000 in 2001.</p>	<p>Future planning will deliver greater diversity and choice of housing types with increased provision for semi-detached, attached, and multi-unit dwellings within the city’s urban areas.</p> <p>Ongoing demand for housing will continue to put upward pressure on housing prices. An affordable housing strategy will require collaboration from all levels of government, the development sector and the community.</p>

## The implications of these trends

### Population growth and the environment

Accommodating 50,000 extra residents, from 2006 – 2031, presents some clear opportunities and challenges for the community. We need to balance the requirements of a growing population with the necessity of protecting and preserving our fragile ecosystem.

### Population growth and transport

Increasing numbers of residents will result in more daily trips both within Redland City and to other parts of the region. Transport systems are expensive and Redland City must compete with other areas of south-east Queensland for improved transport networks.

Many commuters will continue to work outside Redland City and most will continue to use cars for local or regional trips unless affordable and attractive alternatives exist, or fuel becomes scarce.

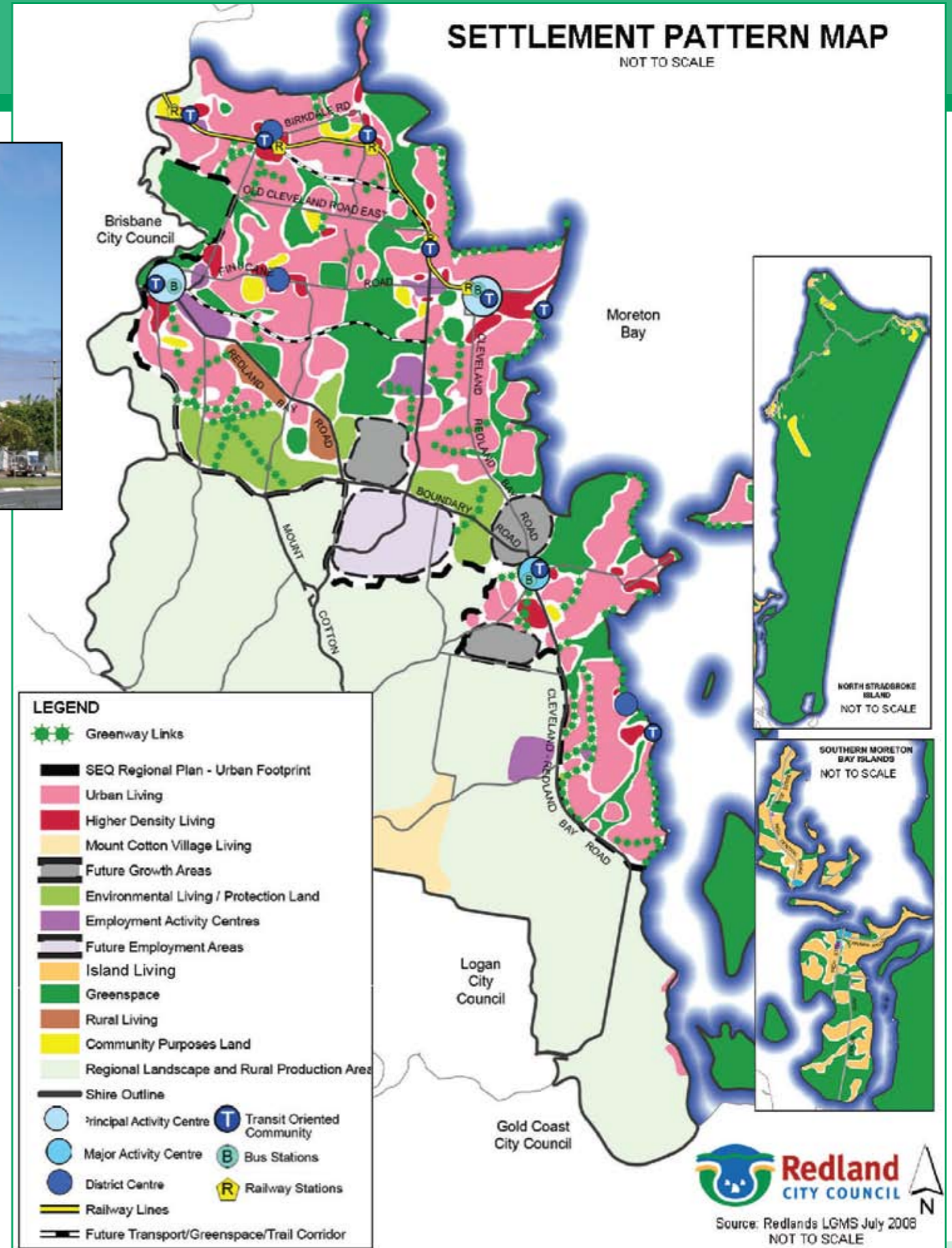


### Population growth and employment

With increasing population comes a need to consider the economic and employment needs of future city residents. Accommodating up to 24,500 new jobs in the city will bring many benefits. The challenge lies in attracting the right balance of economic activity to suitable locations whilst preserving the city's character, lifestyle and natural environment.

### Population growth and housing

Redland City faces challenges in its future housing supply. The future population will be considerably older than it currently is, and made up of smaller (one and two person) households. Housing affordability is likely to continue to be a major issue for many. All this points to the need for a major change in our housing form. Smaller housing, compact urban design, and more attention to issues such as energy efficiency, will ensure that we reduce the impact of housing on our environment.





## More information

If you want to know more check out the draft Local Growth Management Strategy for the Redlands at [www.redland.qld.gov.au](http://www.redland.qld.gov.au) > [Planning & Development](#) > [Planning](#) > [Local Growth Management Strategy](#) and the SEQ Draft Regional Plan at [www.dip.qld.gov.au](http://www.dip.qld.gov.au) > [regional-planning](#) > [Draft South East Queensland Regional Plan 2009–2031](#)

📞 1300 665 660

✉ [redlands2030@redland.qld.gov.au](mailto:redlands2030@redland.qld.gov.au)

🌐 [redlands2030.com.au](http://redlands2030.com.au)