

Redlands 2030

creating our future



The people of the Redlands

Now	The Future – In 2030
The population of Redland City was 131,210 in 2006.	Projections suggest the city will have a population of 181,000 - an extra 50,000 people.
The most densely populated areas of the city are the established suburbs in the north of the city such as Capalaba and Cleveland.	Redland Bay, Victoria Point and Thornlands will be the new growth areas.
The population of the Southern Moreton Bay Islands and North Stradbroke Island was 6,905 in 2006.	It is estimated that the population will have almost doubled. Over 12,000 people will call the Islands home in 2030.
In 2006, older people (aged 65 years and over) made up 12.6% of the Redland City population (some 16,724 people).	Older people will represent 30% of the population (55,000 people).
In 2006, there were 8,600 single person households in Redland City (19.3% of households).	It is likely that there will be over 20,000 single person households (26% of households).
In 2006, 1,934 Redland City residents identified as Indigenous. The most significant numbers of Indigenous residents are on North Stradbroke Island, Capalaba and Victoria Point.	If current trends continue, the population of Aboriginal and Torres Strait Islander people in Redland City will continue to grow.
Redland City was home to 26,396 children aged 14 and under in 2006.	Almost 30,000 children (0-14) will call Redland City home. About half of them will live in Redland Bay, Victoria Point and Thornlands.



The implications of these changes

Population growth

Population growth can be sustained through proper planning. In 2030, this might result in:

- Higher density housing
- Smaller lots
- Transport infrastructure to support areas with significant growth
- Variety of housing types or styles
- Mixed use areas.

What's planned?

- Planned growth and population increases will result in better economies-of-scale for provision of community facilities and transport services.
- A population increase will require more housing across the city. This can be achieved through development of previously undeveloped sites or changing lot sizes in established areas.

Young families in southern suburbs

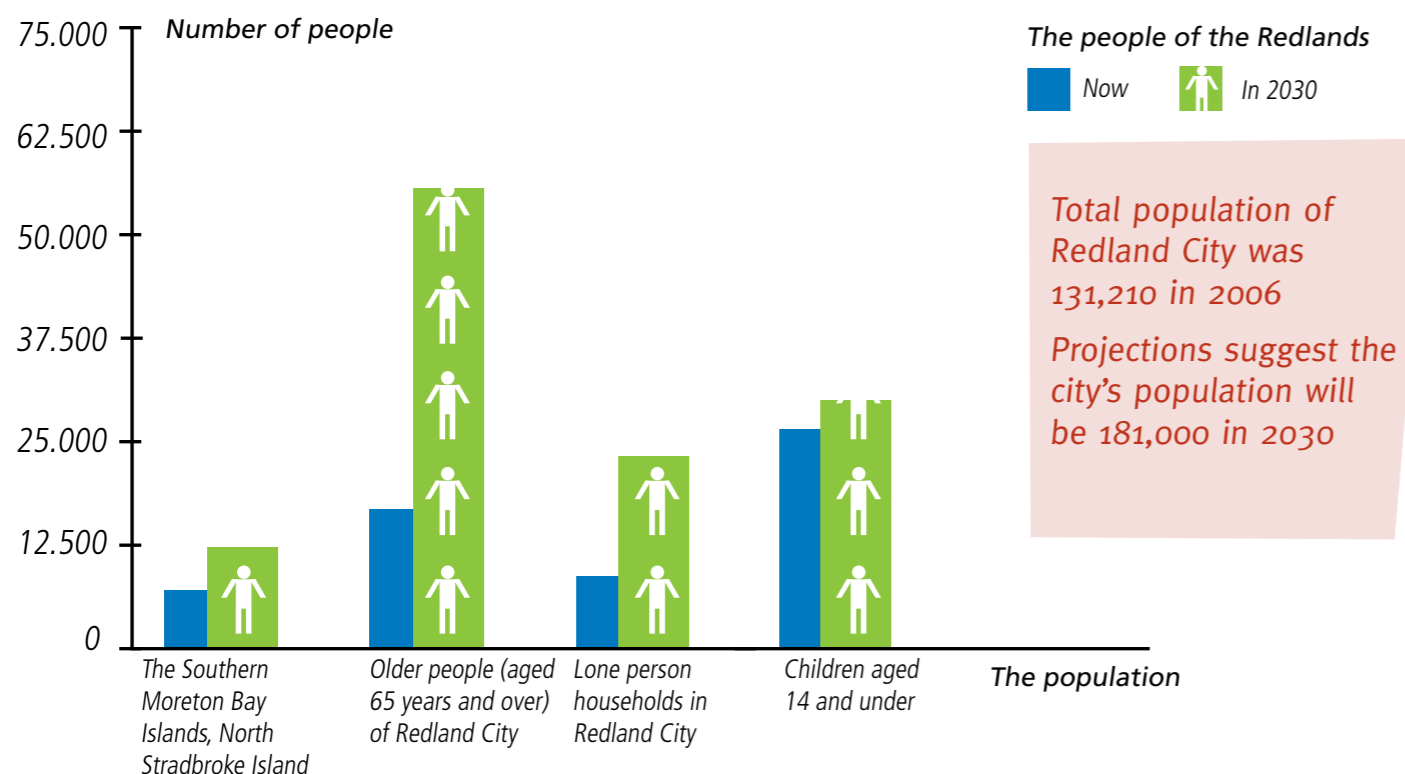
- Population projections and land use plans may point to a concentration of young families in the high-growth southern suburbs of Redland Bay, Victoria Point, Mt Cotton and Thornlands. This population will need tailored facilities and services including schools, playgroups, health care and sport and recreation opportunities as well as transport and other services.

Changing households

- The shift to smaller households is likely to change the types of housing needed. It is likely that twice as many single person households will exist. While living and being alone can be a positive choice for many, studies indicate that the rates of mental and behavioural problems and psychological stress are higher among adults who live alone than in adults living with at least one other person.ⁱⁱ

The people of the Redlands

At a glance



Ageing population

With rapid ageing of the population will come challenges and opportunities, including:

- more retired and semi-retired people wanting to participate in local community activities
- expectations for sophisticated lifelong learning and recreation opportunities as the "baby boomers" reach retirementⁱ
- a need for services, facilities and networks for seniors and the aged
- more people living on fixed retirement incomes or pensions.

ⁱ Planning for local government responses to ageing and place, NSW Local Government Association 2004

ⁱⁱ www.vichealth.vic.gov.au/Programs-and-Projects/Mental-Health-and-Wellbeing/Social-Connection/Social-Connection-Facts-and-Stats.aspx

Did you know?

Of every 100 Redlands residents:

Now	In 2030
13 are over 65	30 are likely to be over 65
20 are children	18 will be children
5 live on the islands	7 will live on the islands
9 live alone	11 will live alone



More information about population and demographic shifts:

- Redland City Council, Community Profile, 2008, www.redland.qld.gov.au
- Department of Infrastructure and Planning, Population and Housing Fact Sheet (PIFU), August 2008, www.dip.qld.gov.au
- Department of Infrastructure and Planning, Draft SEQ Regional Plan 2009-2031, 2008, www.dip.qld.gov.au
- Australian Bureau of Statistics, Census, 2006, www.abs.gov.au

☎ 1300 665 660

✉ redlands2030@redland.qld.gov.au

🌐 redlands2030.com.au